



# DigiLand DL8006 LCD Screen Replacement

This guide will assist in replacing the LCD screen.

Written By: Landon Choi





## TOOLS:

- [Tweezers](#) (1)
- [Phillips #0 Screwdriver](#) (1)
- [iFixit Opening Tools](#) (1)



## PARTS:

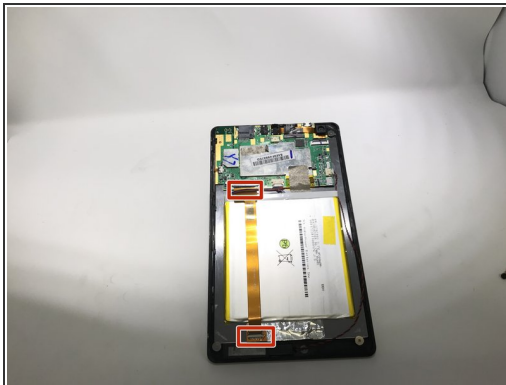
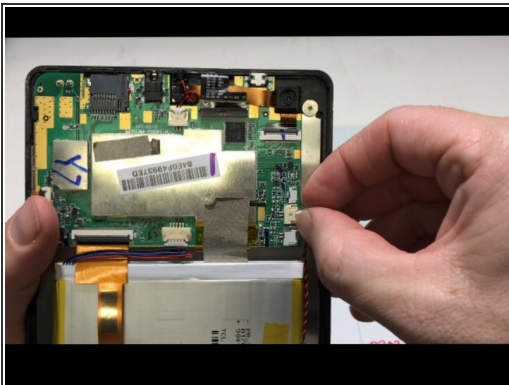
- [LCD screen digiland dl8006](#) (1)

## Step 1 — LCD Screen



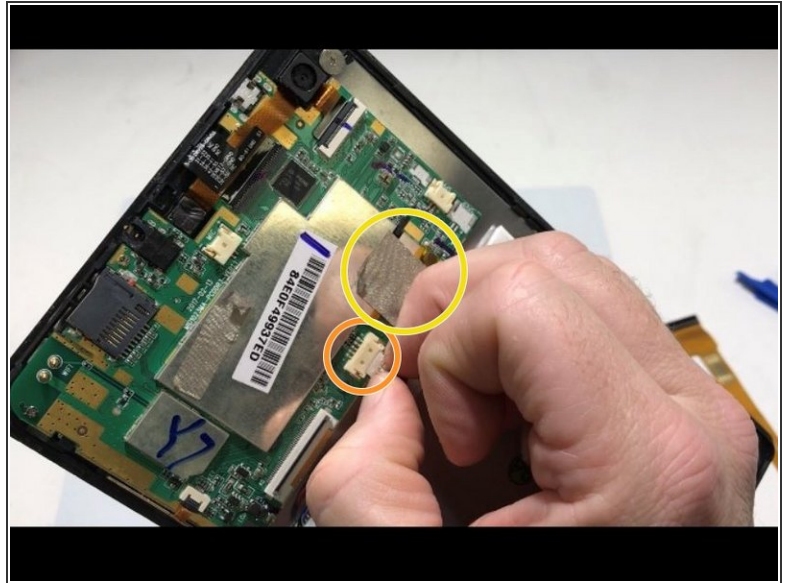
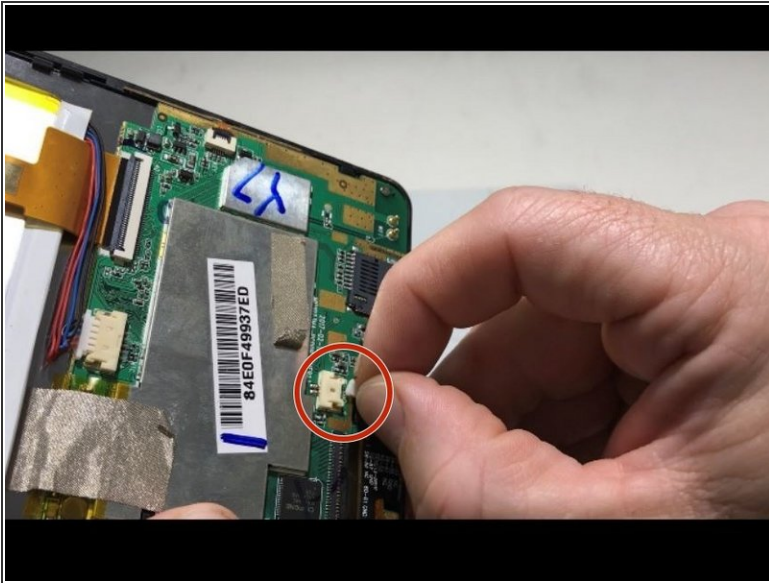
- Place the device laying down on its front with the back facing upwards.
- Use a plastic opening tool to pry the front and back faces apart exposing the internal mechanisms.
- Remove the silver/metallic tape on the lower end of the tablet.

## Step 2



- Remove the red & black cord connecting the motherboard and the bottom end of the tablet.
- Remove the ribbon cable running over the battery by prying the locking tab of the ZIF connector up and then pulling the cable from the connector.

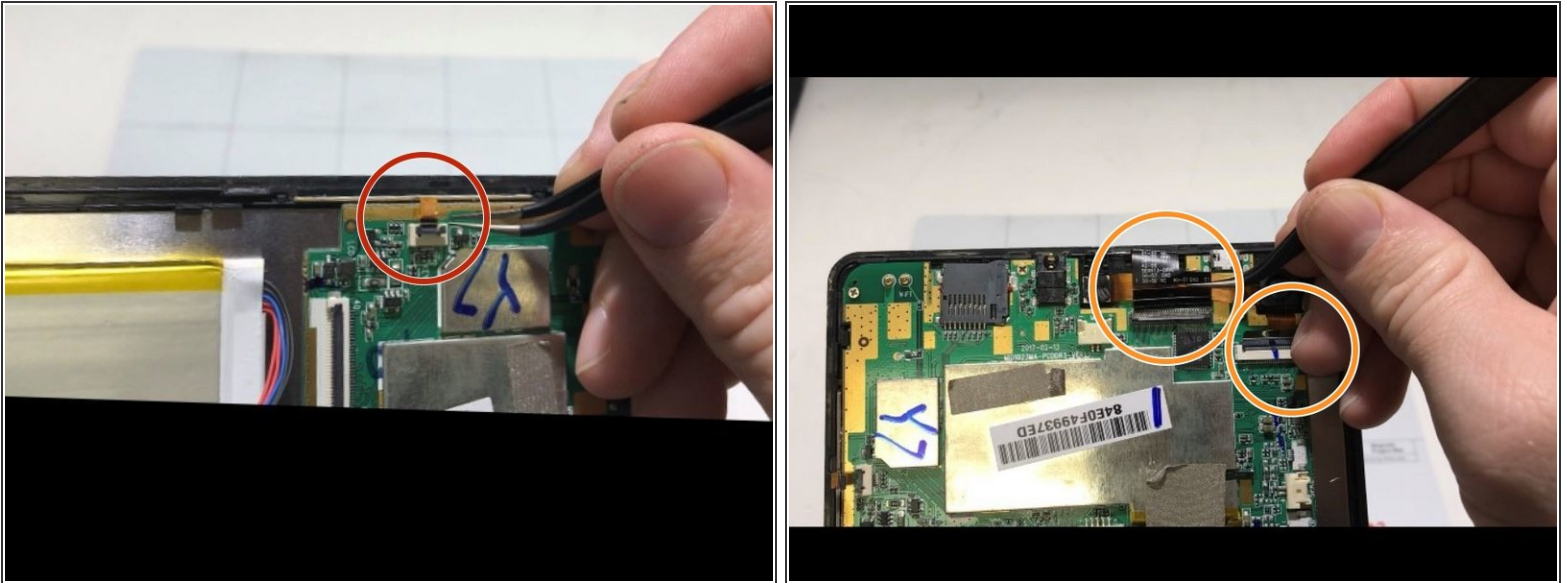
## Step 3



- Remove the red & black cord connecting the motherboard and the camera, on the upper end of the tablet.
- Remove the red & blue cord connecting the battery to the motherboard.
- Remove the tape connecting the back of the LED screen and the motherboard.

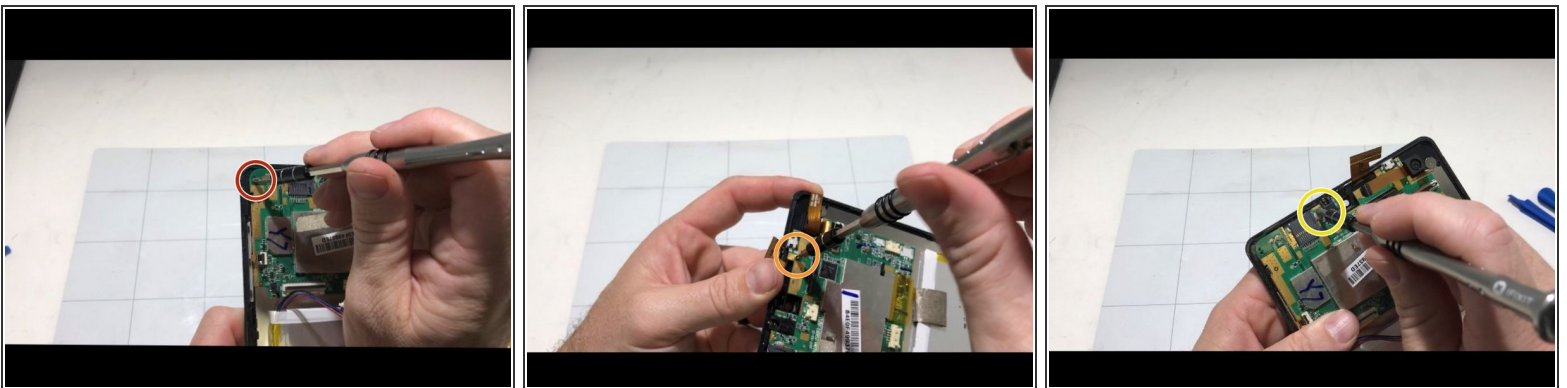


## Step 4



- Remove the cable connecting the motherboard to the left side of the tablet.
- Remove both cables connecting the camera to the motherboard.

## Step 5



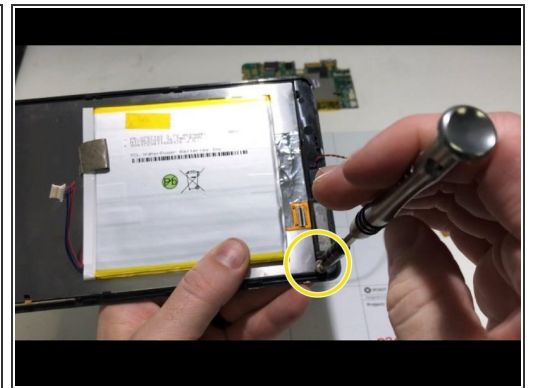
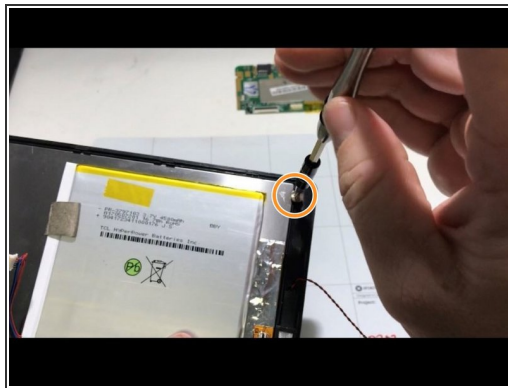
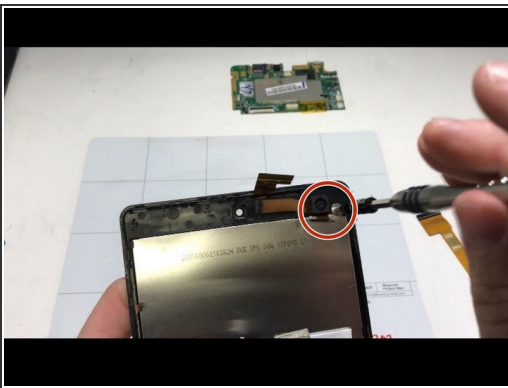
- Remove the screw on the left corner of the motherboard with a Phillips #0 screwdriver.
- Remove the screw under the ribbon cable with a Phillips #0 screwdriver.
- Remove the screw on the top of the motherboard with a Phillips #0 screwdriver.

## Step 6



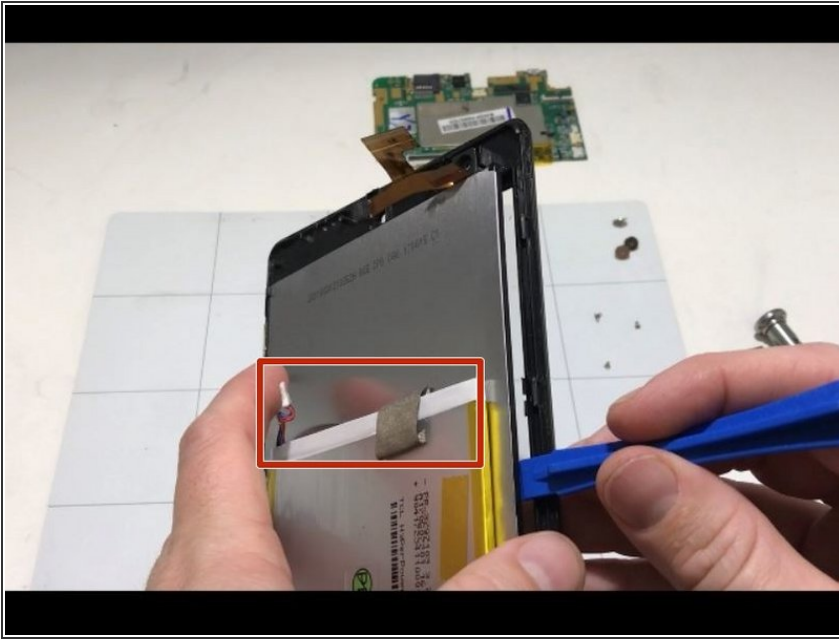
- Remove the motherboard and place it aside.

## Step 7



- Remove the screw anchoring the LED screen down in the top right of the tablet with a Phillips #0 screwdriver.
- Remove the screw anchoring the LED screen down in the bottom right of the tablet with a Phillips #0 screwdriver.
- Remove the screw anchoring the LED screen down in the bottom left of the tablet with a Phillips #0 screwdriver.

## Step 8



- Use an opening tool to pry the LCD screen and screen apart.
- Remove the battery by using an opening tool or by ripping off the tape, on the upper and lower end of the battery.

To reassemble your device, follow these instructions in reverse order.