



DigiLand DL801W Power and Volume Button Assembly Replacement

This guide will help you replace the power and volume button assembly on the DigiLand DL801W.

Written By: Travis Mangum



INTRODUCTION

This guide will show you the process of replacing your DigiLand DL801W power button components. There are quite a few steps, so take your time and follow them carefully.

Note: Light soldering is required for successful repair of the power button components of the DigiLand DL801W.



TOOLS:

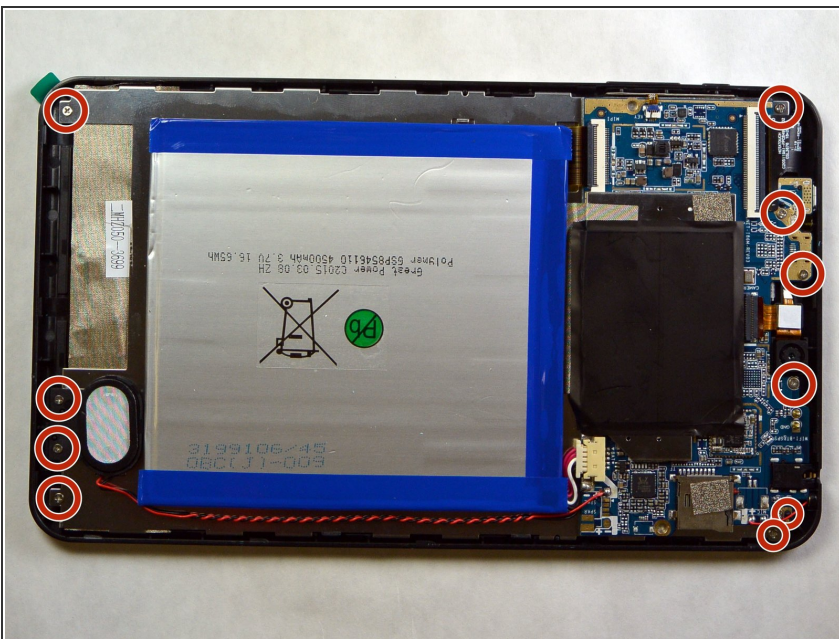
- [Soldering Workstation](#) (1)
 - [iFixit Opening Tools](#) (1)
 - [Spudger](#) (1)
 - [64 Bit Driver Kit](#) (1)
-

Step 1 — Power and Volume Button Assembly



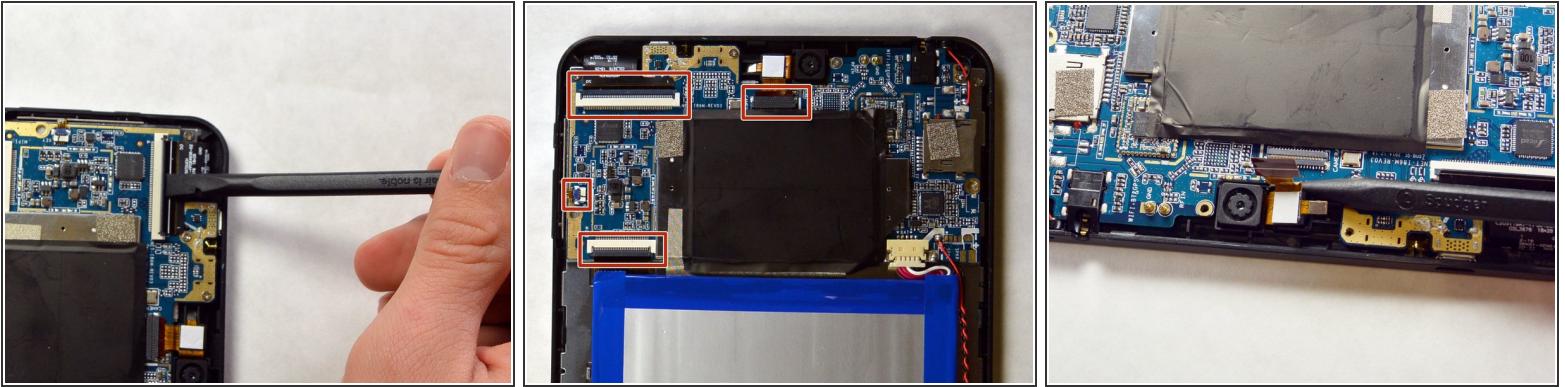
- ❗ Before opening your DigiLand Tablet, ensure that the MicroSD card is removed.
- Hold the tablet in one hand (not your primary hand) so that the bottom edge of the tablet is facing you and the back of the tablet is facing up.
- Using a blue plastic opening tool, gently insert the tool between the back panel and the main body.
- Going around the edge of the tablet, gently pry open the back panel. As you go around, you will hear a click.

Step 2



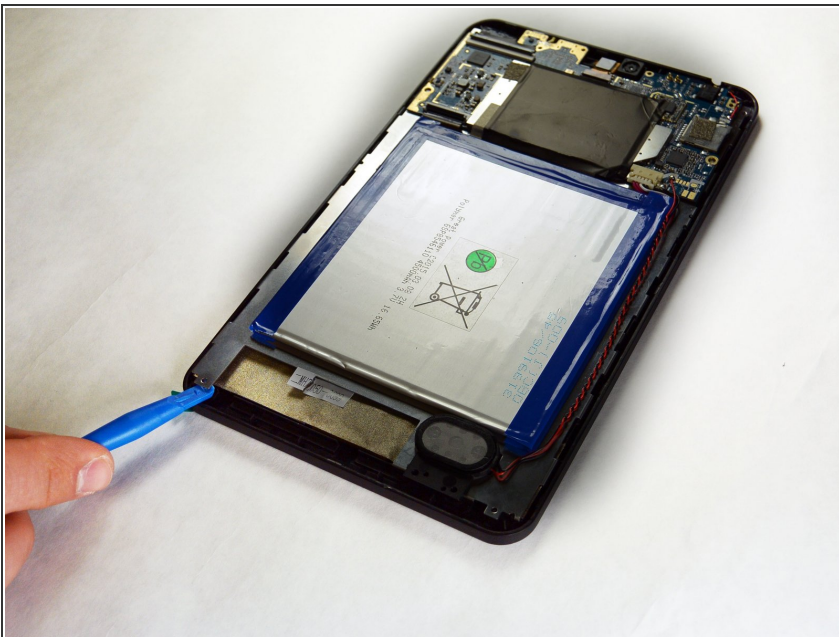
- Remove the 10 JIS #000 screws from the back of the device.

Step 3



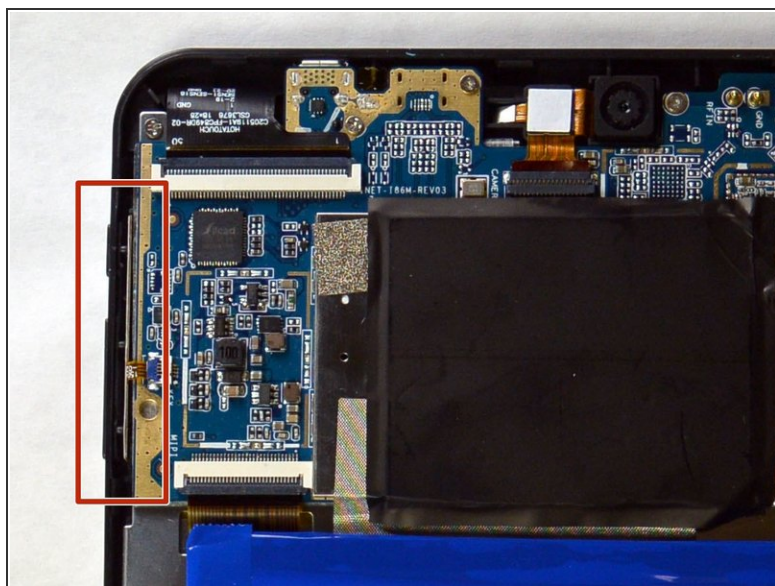
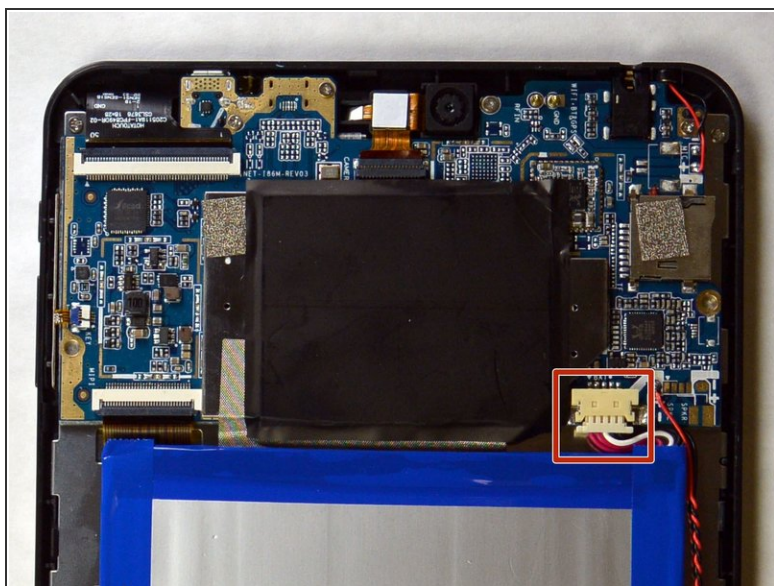
- Using a spudger, lift the flaps securing the four ZIF connectors.
 - ❗ The smaller of the four flaps may require you to use the point end of the spudger.
 - Use the pointed end of the spudger to disconnect the ribbon cables from their ZIF connectors.
- ⚠ Be careful not to damage any of the wires. If damaged, the tablet may not work correctly after repairing.

Step 4



- After removing all of the screws and disconnect any wires, use the blue plastic opening tool and starting from the bottom near the battery, carefully lift the back metal plate and motherboard out. Set aside in a secure place.

Step 5



- Disconnect battery terminal using the black spudger.
- Once the battery is disconnected, the motherboard should lift right off of the metal back plate.
- Now you will be able to remove the Power Button and Volume Assembly with a soldering iron.

To reassemble your device, follow these instructions in reverse order.