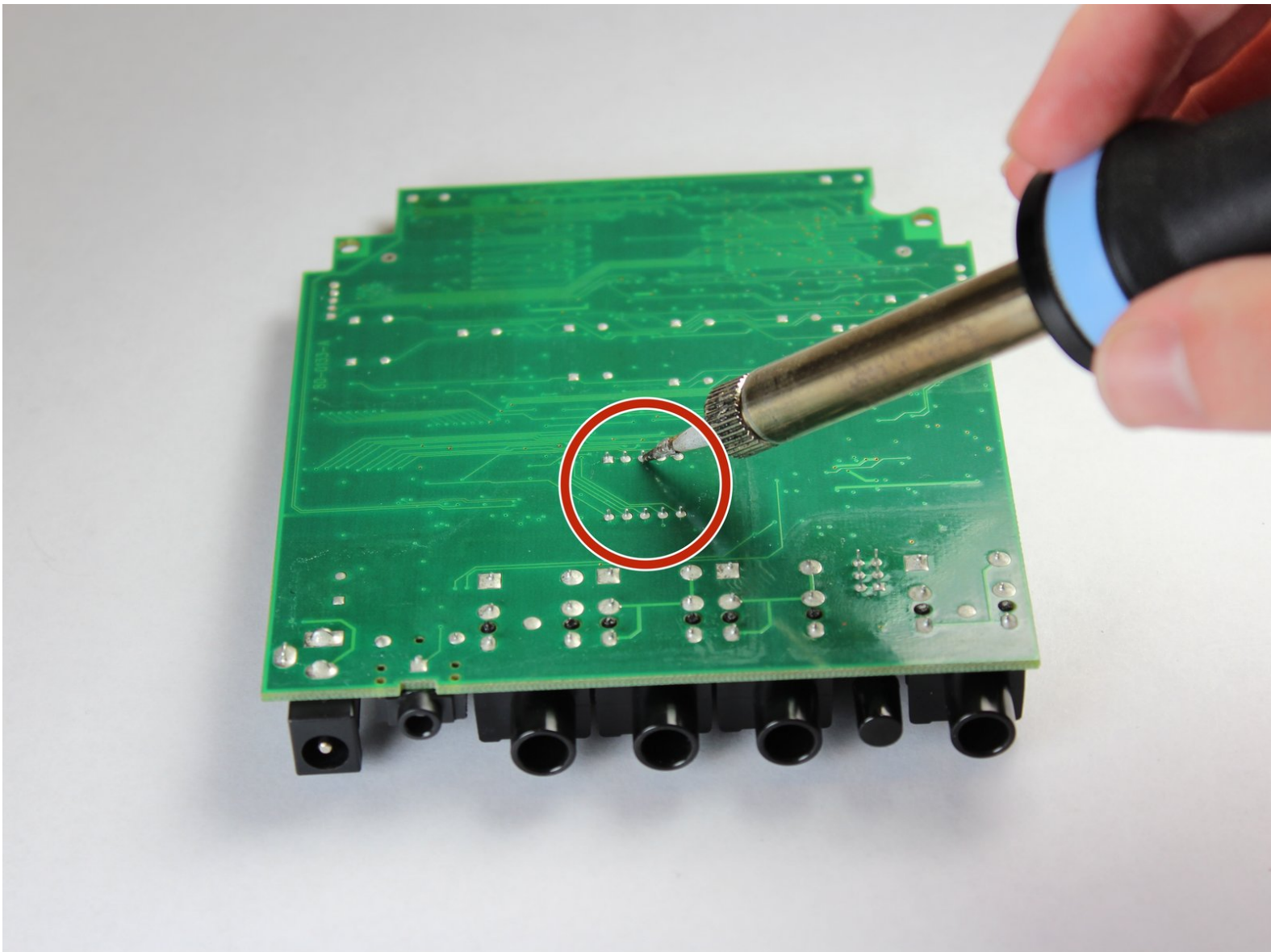




DigiTech RP70 LED Light Replacement

This replacement guide is to help you replace the LED light in the DigiTech RP70.

Written By: Elijah Smith



INTRODUCTION

If the LED light is broken, or dead, this guide will teach you how to remove the broken component for replacement.



TOOLS:

- [Phillips #0 Screwdriver](#) (1)
 - [Soldering Iron](#) (1)
-

Step 1 — Motherboard



⚠ Unplug the device from its AC power adapter; unplug anything connected to the input/output jacks.

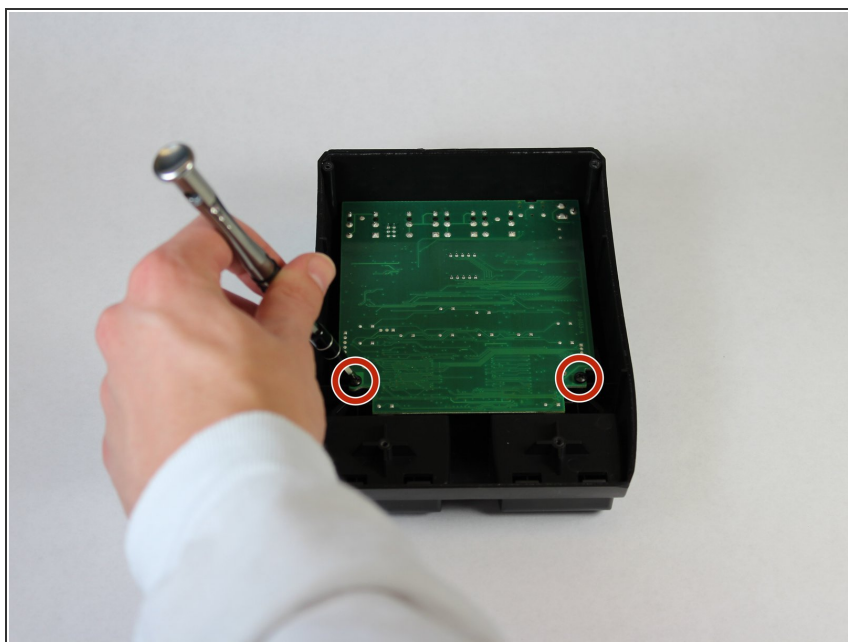
- Remove the four 8mm Phillips #0 screws located on the back panel.

Step 2



- Remove the back panel to expose the motherboard.

Step 3



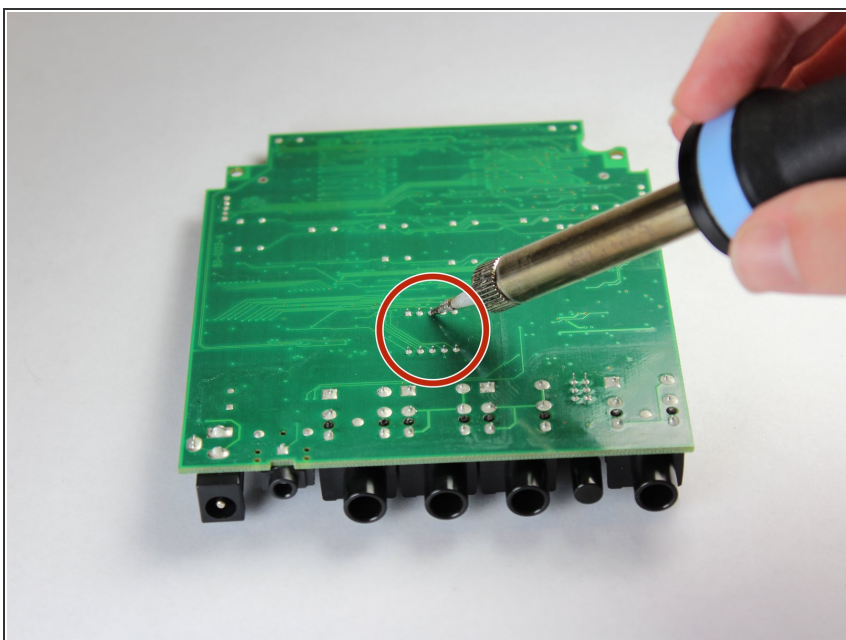
- Remove the two 11mm #0 Phillips screws located at the bottom of the motherboard.

Step 4



- Lift the indented end of the motherboard opposite the input/output jacks. Then, pull away from the input/output jacks to slide the motherboard out of the casing.

Step 5 — LED Light



- [Desolder](#) the back of the motherboard where the LED light is located.

To reassemble your device, follow these instructions in reverse order.