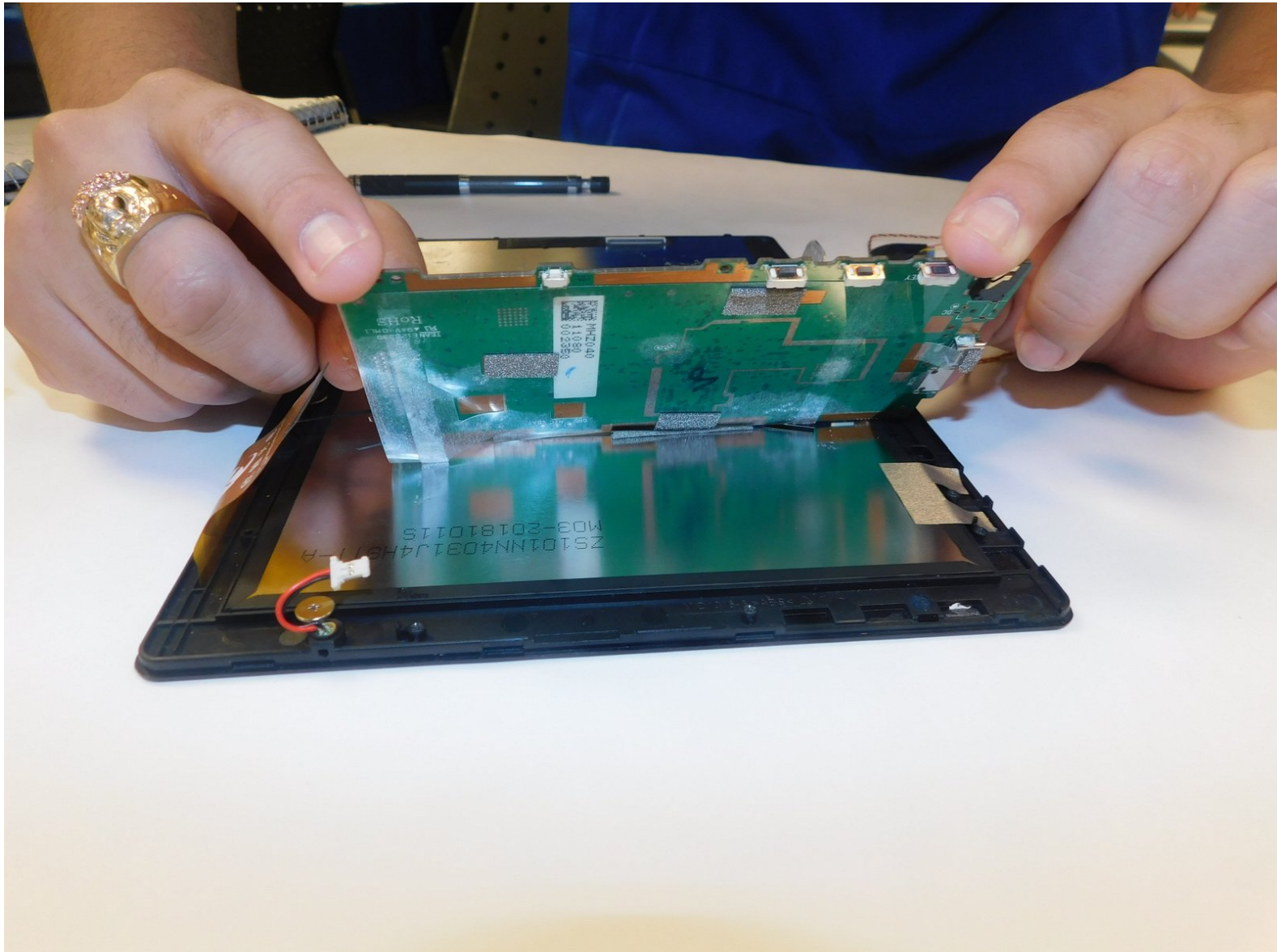




Digiland 10.1" DL1016 Motherboard Replacement

You may have a faulty RAM.

Written By: Virginia Tapia





TOOLS:

- [Phillips #000 Screwdriver](#) (1)
- [iFixit Opening Tools](#) (1)
- [iFixit Opening Picks set of 6](#) (1)
- [Metal Spudger](#) (1)
- [Spudger](#) (1)



PARTS:

- [Digiland dl1016 motherboard](#) (1)

Step 1 — Digiland 10.1" DL1016 Remove Backing



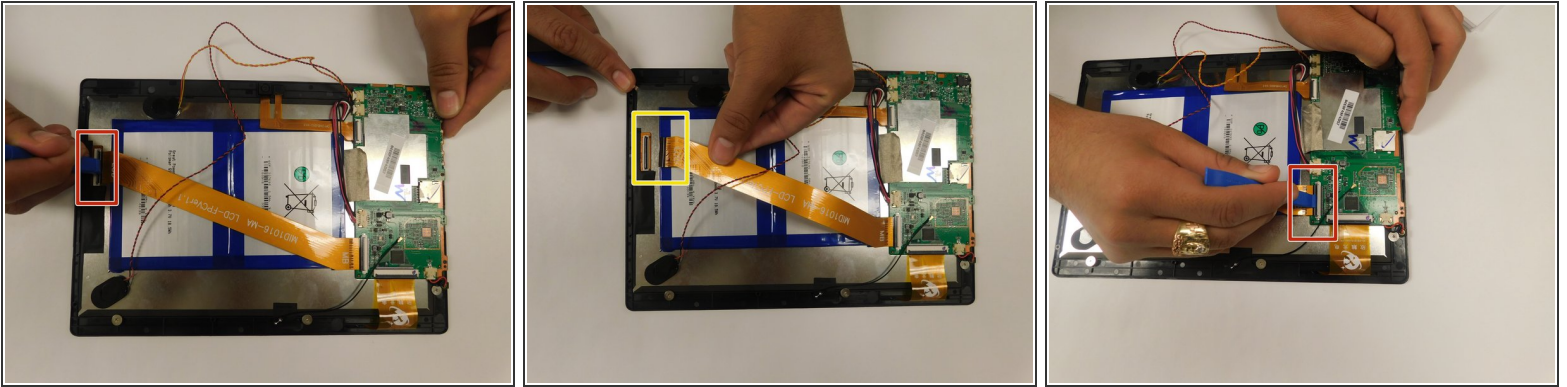
- Use an opening pick and an opening tool to pry the backing off the back of the tablet.
- ⓘ You may need some force when doing this and if needed use a metal spudger.

Step 2



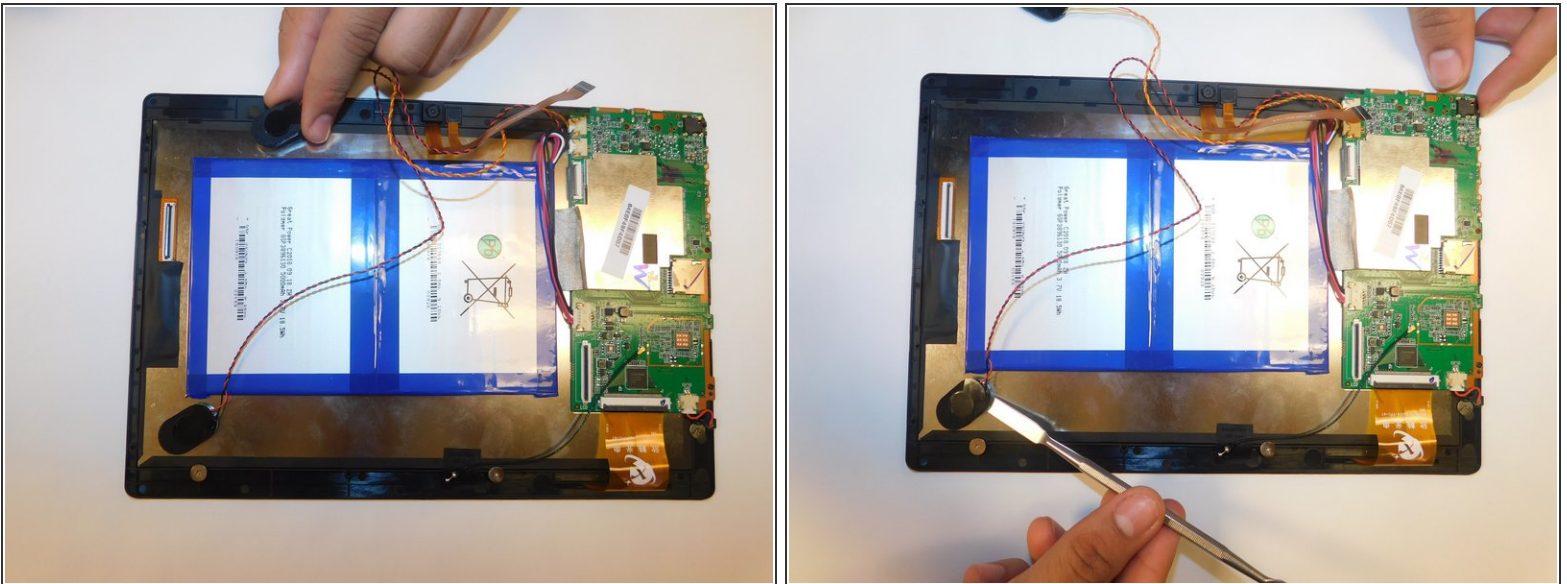
- Gently lift the backing off.

Step 3 — Digiland 10.1" DL1016 Disconnect LCD Connectors



- Pull back the black flaps on the ZIF cable connectors.
- Pull the ribbon cables out of the connectors.

Step 4 — Digiland 10.1" DL1016 Disconnect Wires going off the Motherboard



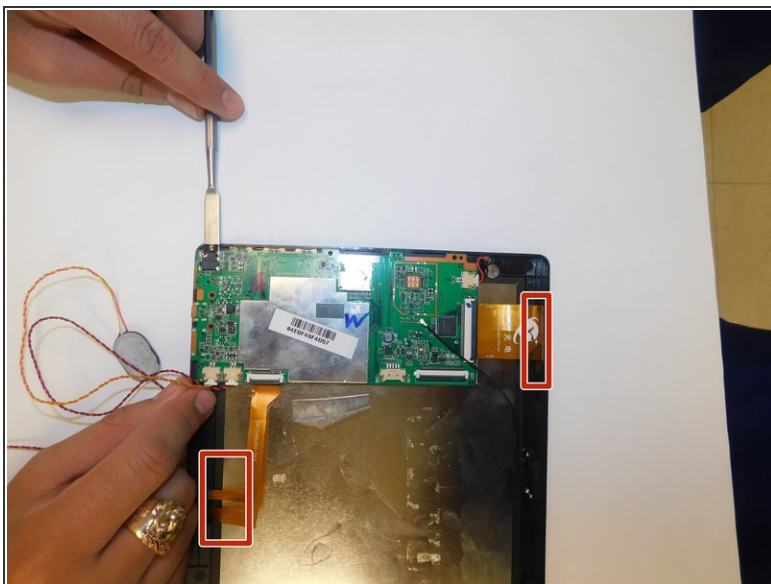
- Gently pull the wiring back.
- ⓘ You may need to use a metal spudger to lift the wire connector off the back of the screen.

Step 5 — Power Button



- Disconnect the black cable off the motherboard.
- Remove the four 1.5mm Phillips #000 screws from the motherboard.

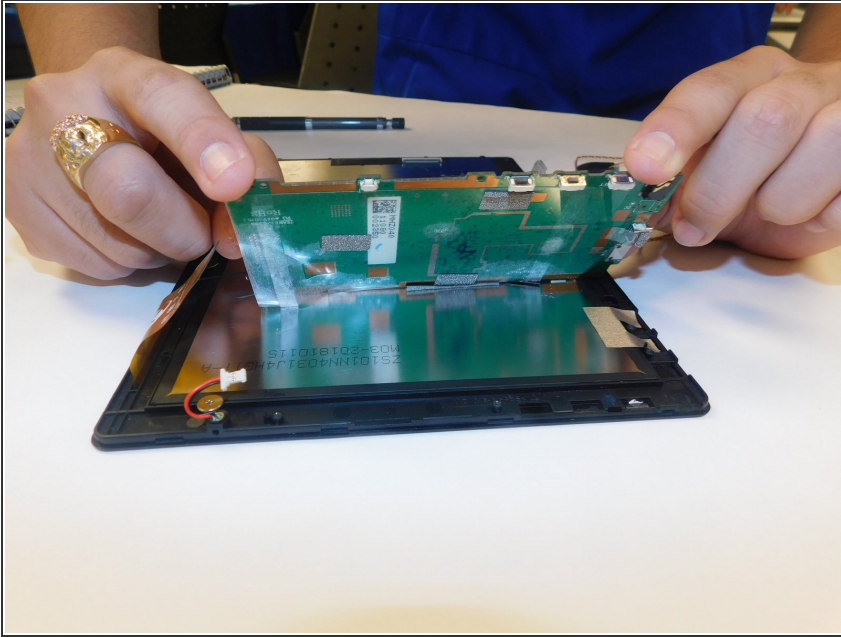
Step 6



- Make sure the ribbon cables are free or unconnected so the motherboard is able to be moved.
- Use a metal spudger to slide underneath the motherboard and push it up so it's unstuck from the tablet.
- Lift up the motherboard and place it somewhere that is clean and kept safe.

This document was generated on 2020-01-17 01:09:54 PM (MST).

Step 7 — Motherboard



- Once you have followed all steps simply replace the motherboard to fix your RAM

To reassemble your device, follow these instructions in reverse order. When following the Prerequisite Guide for Replacing the Power Button ONLY go to step 7.