



# Digiland DL1168A Battery Replacement

How to replace the battery on the Digiland DL1168A.

Written By: Ryan Barker



## INTRODUCTION

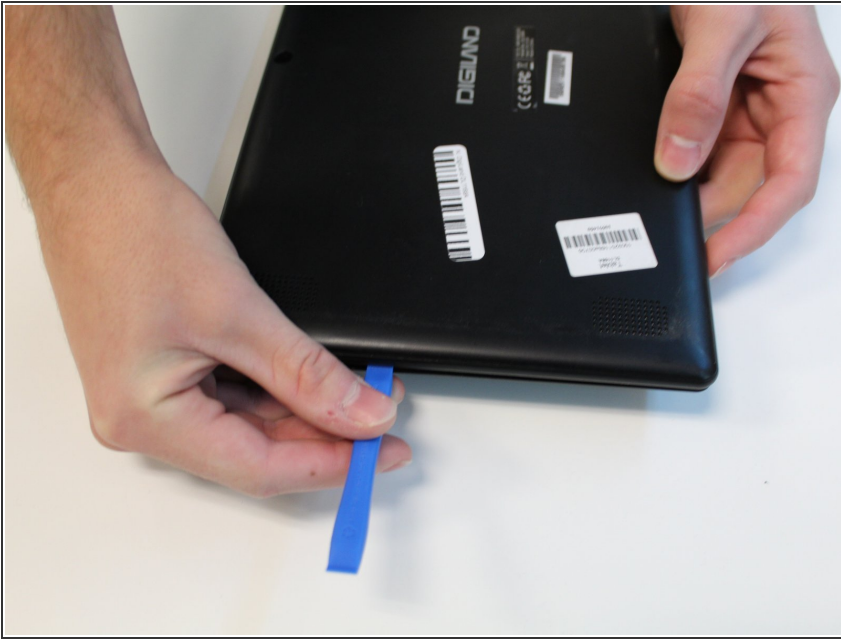
To replace the Digiland DL1168A battery you will need an opening tool. Be sure to be careful. The glue on the battery is sticky and hard to get off.

---

### TOOLS:

- [iFixit Opening Tools](#) (1)
  - [Soldering Iron](#) (1)
-

## Step 1 — Rear Case




- Using an opening tool, begin softly prying open device by first inserting it in between the front and back panels.
- Continue prying the edges while moving around the device's perimeter until the back can be easily removed.

## Step 2

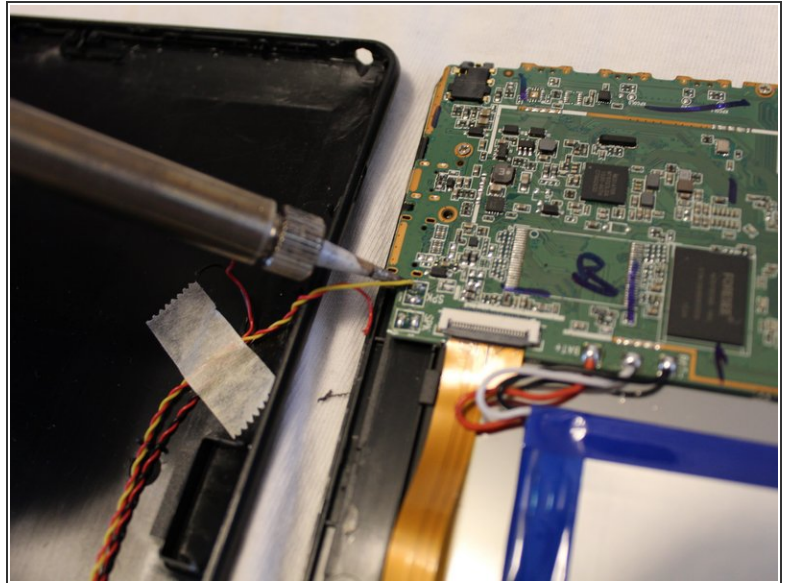
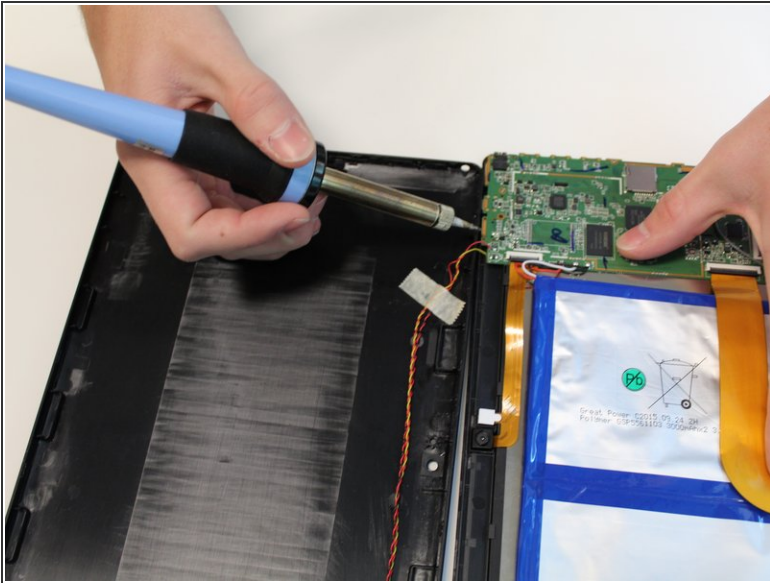


- Carefully lift back panel away from the body of the device.

 Be gentle when lifting the back panel. The speaker wires are still connected to both the front and back panel.

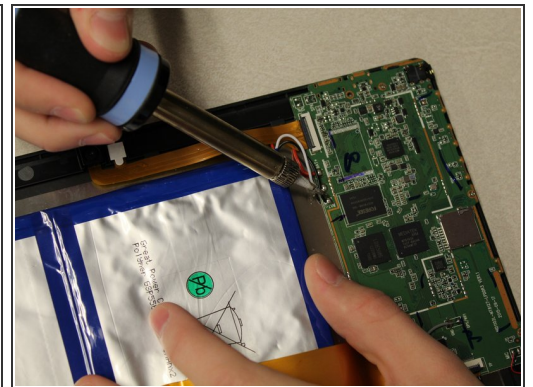
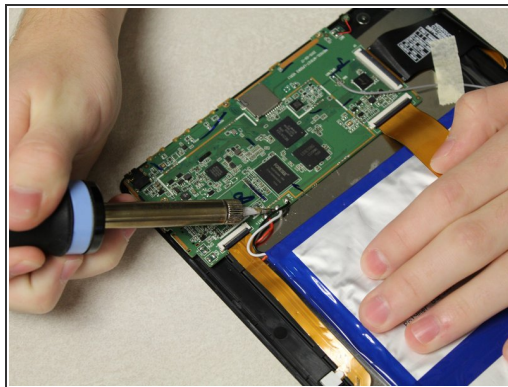
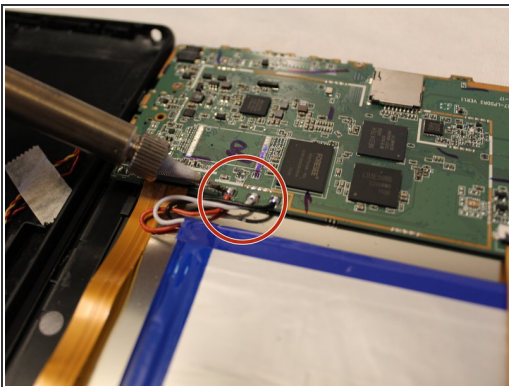


## Step 3



- [Desolder](#) the four wires connecting the rear case to the motherboard.
- Disconnect the wires from the motherboard.
- Remove the rear case from the device.

## Step 4 — Battery



- Desolder the three positive, negative, and neutral red, black, and white wires from the motherboard that are connected to the battery.



The soldering tool is hot, and will burn. Follow this link for instructions on [How To Solder and Desolder Connections](#).

## Step 5




- Using an opening tool, separate the battery from the tablet.
- Follow the edge of the battery to loosen the glue.

## Step 6



- Once the glue is loosened, pry the battery away from the screen.

 Pulling on the battery may cause you to bend the battery. Bending the battery could cause it to break open. Battery fumes are toxic and unsafe.

To reassemble your device, follow these instructions in reverse order.