



Digiland DL1168A Front/Rear Camera Replacement

How to replace a Digiland DL1168A camera.

Written By: Payton Boshears



INTRODUCTION

Here is a guide on how to replace your Digiland DL1168A camera and replace it with a new one.



TOOLS:

- [iFixit Opening Tools](#) (1)
 - [Soldering Iron](#) (1)
 - [Tweezers](#) (1)
-

Step 1 — Rear Case



- Using an opening tool, begin softly prying open device by first inserting it in between the front and back panels.
- Continue prying the edges while moving around the device's perimeter until the back can be easily removed.

Step 2

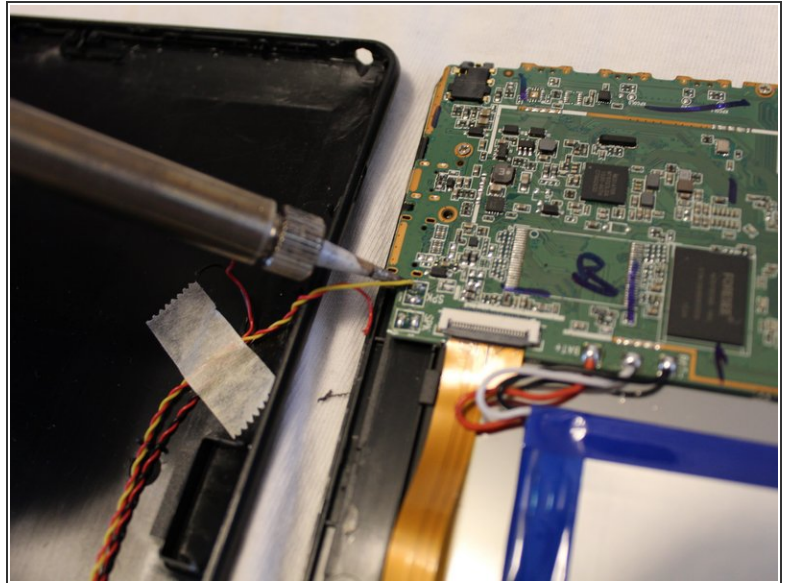
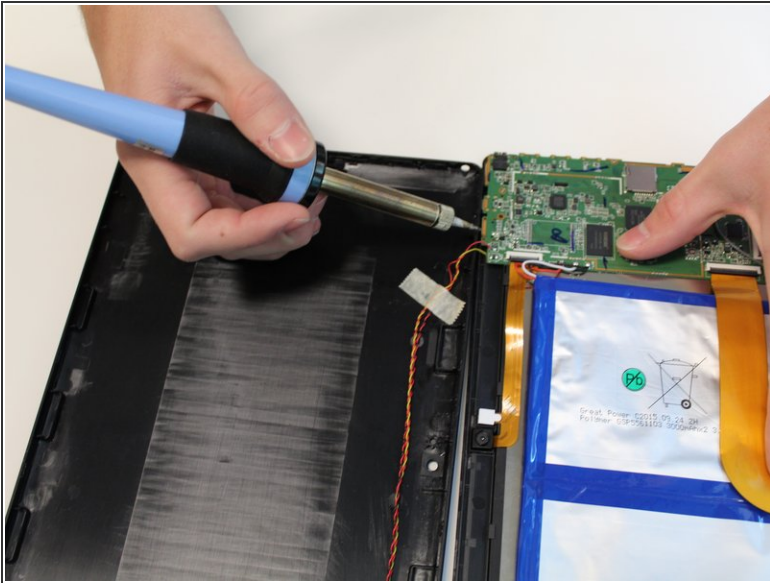


- Carefully lift back panel away from the body of the device.



Be gentle when lifting the back panel. The speaker wires are still connected to both the front and back panel.

Step 3



- [Desolder](#) the four wires connecting the rear case to the motherboard.
- Disconnect the wires from the motherboard.
- Remove the rear case from the device.

Step 4 — Front/Rear Camera



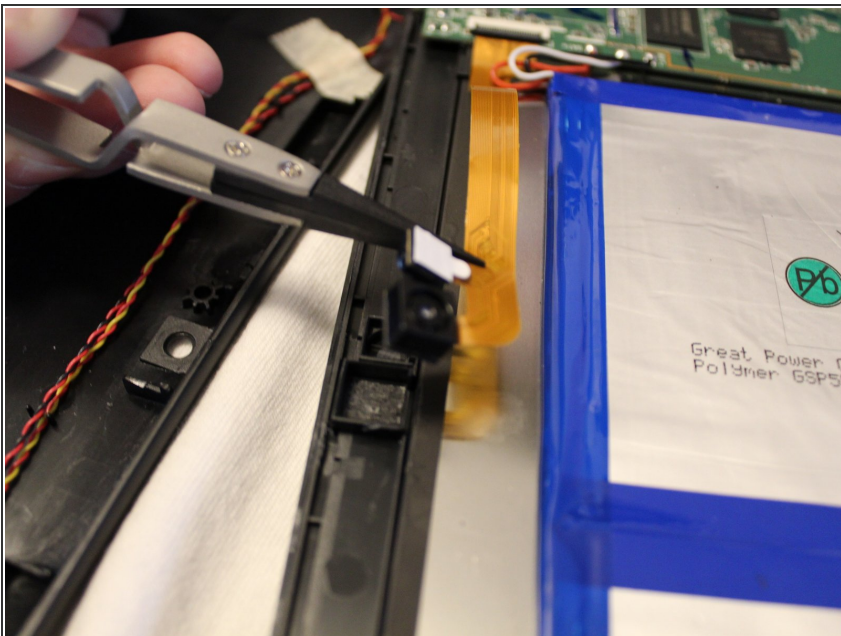
- Use tweezers to remove the cover that keeps the camera lens in place.

Step 5



- Use tweezers to gently begin to lift the back piece off.
- ⚠ Lift gently because the lens is connected to the back piece by a small cord.

Step 6



- After lifting gently both the lens and the back piece will be removed.

To reassemble your device, follow these instructions in reverse order.