



Digiland DL1168A Rear Case Replacement

How to replace the rear case on a Digiland DL1168A.

Written By: Ryan Barker



INTRODUCTION

This guide will allow you to access the inside parts of the Digiland DL1168A through means of removing the rear case. By removing the rear case you can replace the rear case as well as other parts inside the tablet. You will need to [desolder](#) the connections on the motherboard to remove the back panel.



TOOLS:

- [iFixit Opening Tools](#) (1)
 - [Soldering Iron](#) (1)
-

Step 1 — Rear Case




- Using an opening tool, begin softly prying open device by first inserting it in between the front and back panels.
- Continue prying the edges while moving around the device's perimeter until the back can be easily removed.

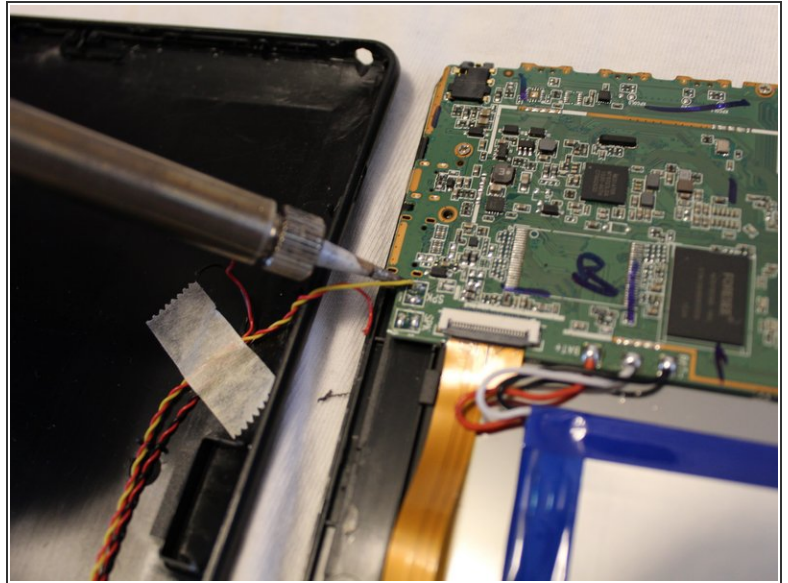
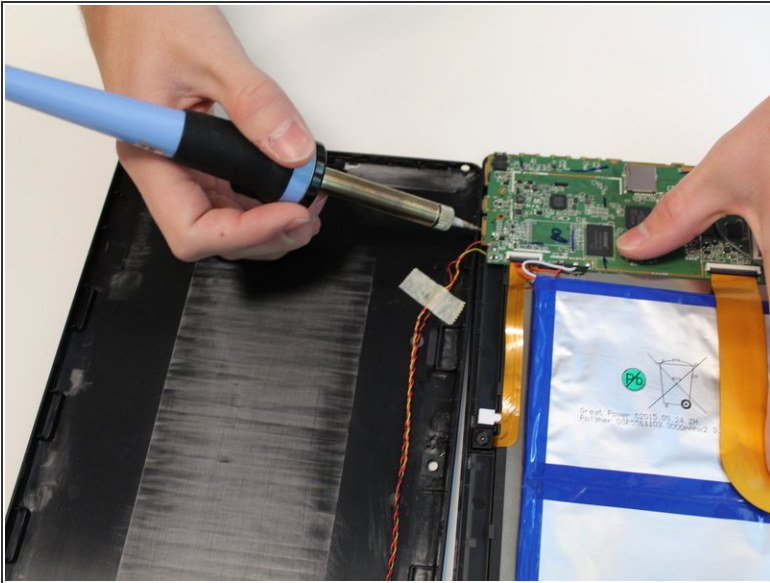
Step 2



- Carefully lift back panel away from the body of the device.

 Be gentle when lifting the back panel. The speaker wires are still connected to both the front and back panel.

Step 3



- [Desolder](#) the four wires connecting the rear case to the motherboard.
- Disconnect the wires from the motherboard.
- Remove the rear case from the device.

To reassemble your device, follow these instructions in reverse order.