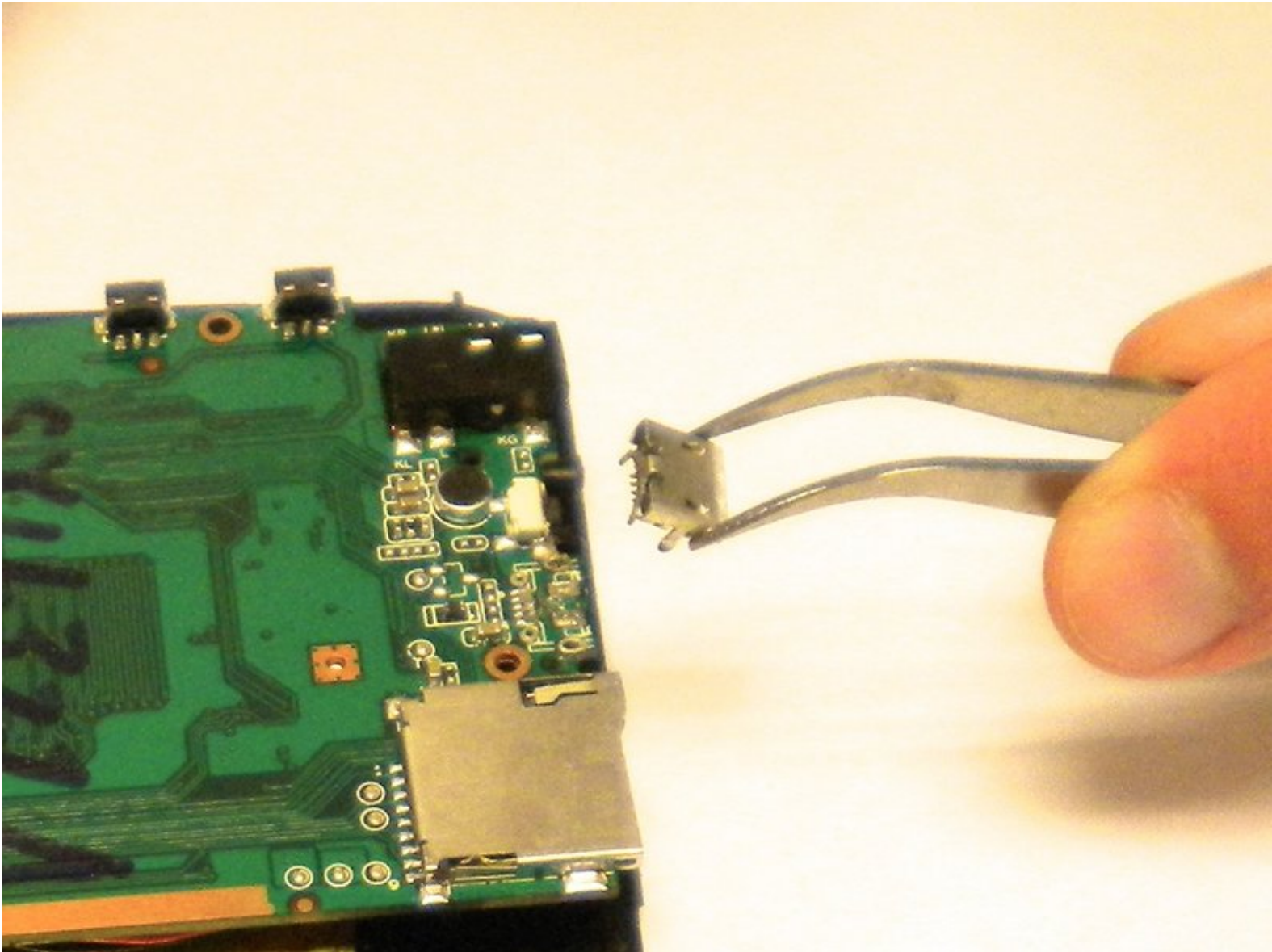




Digitac Jazz Ultratab C725 Charging Port Replacement

How to replace the charging port in the Digitac Jazz Ultratab C725.

Written By: Savannah Brazzeal



INTRODUCTION

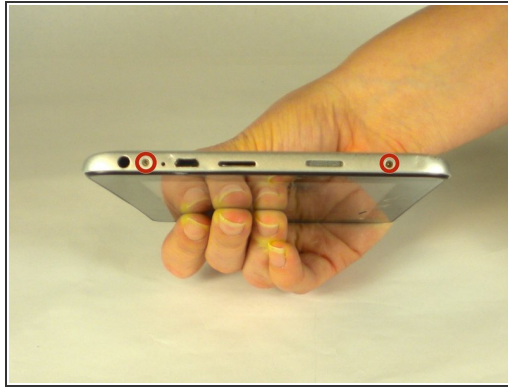
The following guide will show you how to replace the charging port for the Digitac Jazz Ultratab C725.



TOOLS:

- [Phillips #00 Screwdriver](#) (1)
 - [Spudger](#) (1)
 - [iFixit Opening Tools](#) (1)
 - [Tweezers](#) (1)
-

Step 1 — Charging Port



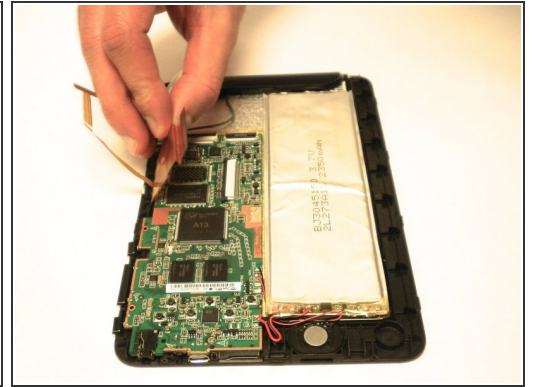
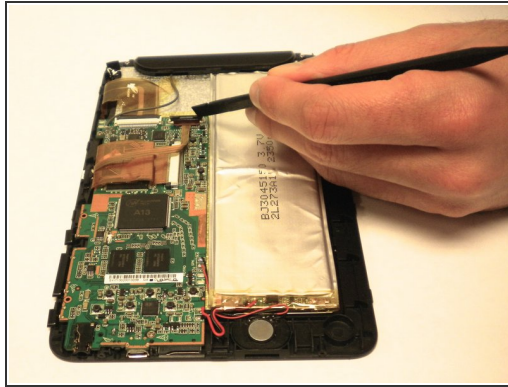
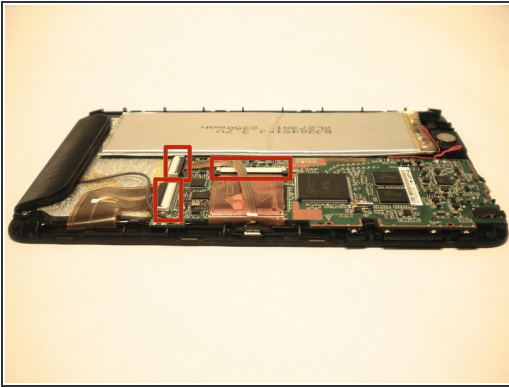
- Locate the four 3.5 mm Phillips head screws holding the silver back plate and the screen together. There are 2 screws on the top and another 2 screws on the bottom.
 - Remove all four screws with the Phillips #00 screwdriver.
- ⚠ Remove the screws with the least amount of force. The removal of the screw will be more difficult if thread damage occurs.

Step 2



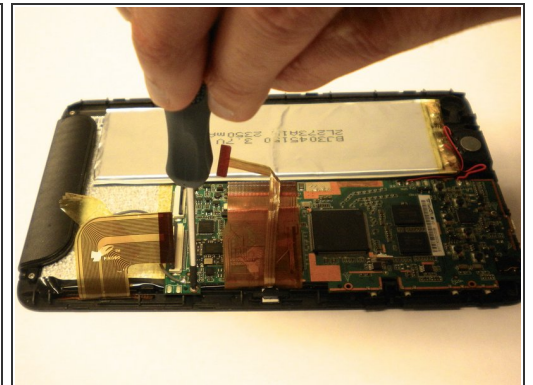
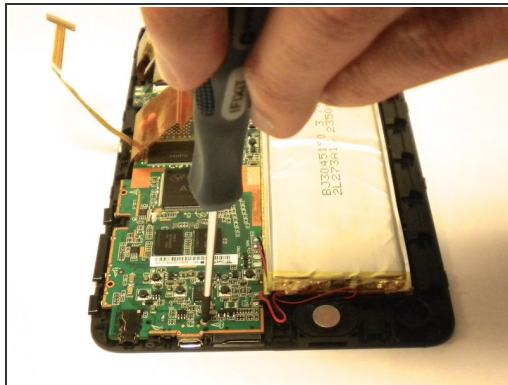
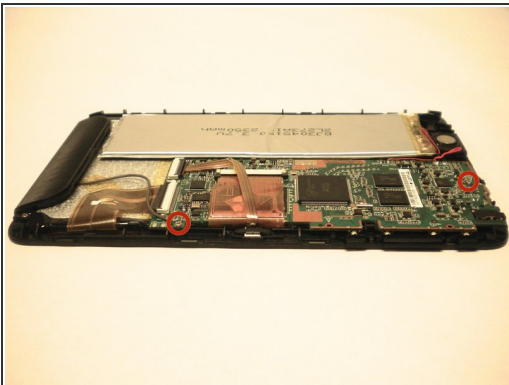
- Flip your device so that the long side without the buttons is facing you.
 - Insert the plastic opening tool between the silver back plate and the screen. From the corner of the device on either side, pry the seam of the device about 1 inch.
 - With the plastic opening tool, pry the screen apart from the back plate.
 - Keep prying the screen apart from the back plate until they are separated.
 - With the plastic opening tool, if necessary, pry apart the remaining seams of the device.
- ⚠ After the screen is loose, pull the screen towards you. Lift it to prevent damage to the buttons.

Step 3



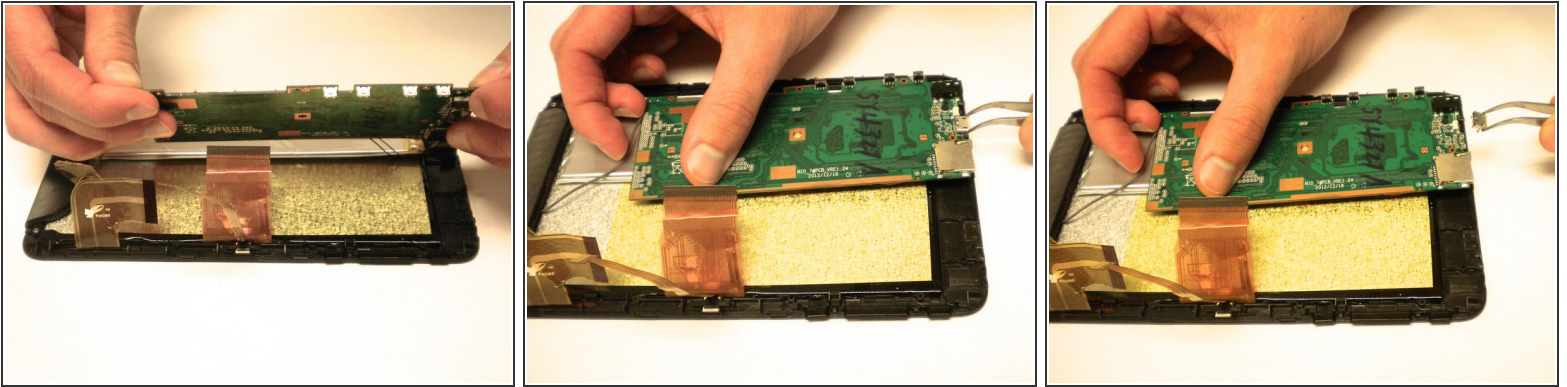
- Locate the 3 black clips on the motherboard that hold the data cables./
- Using the Spudger, pry the black clips up to a 90 degree angle./
- Pull the data cables out once the clips are up to a 90 degree angle.
- Repeat this for all 3 clips.

Step 4



- Locate the two 4.0 mm Phillips head screws that are holding the motherboard in place.
- Use the Phillips #00 screwdriver to remove both of the screws.

Step 5



- The motherboard should now be loose.
- To gain access to the charging port, flip the motherboard over.
- Use the tweezers to pull the charging port off of the motherboard.

To reassemble your device, follow these instructions in reverse order.