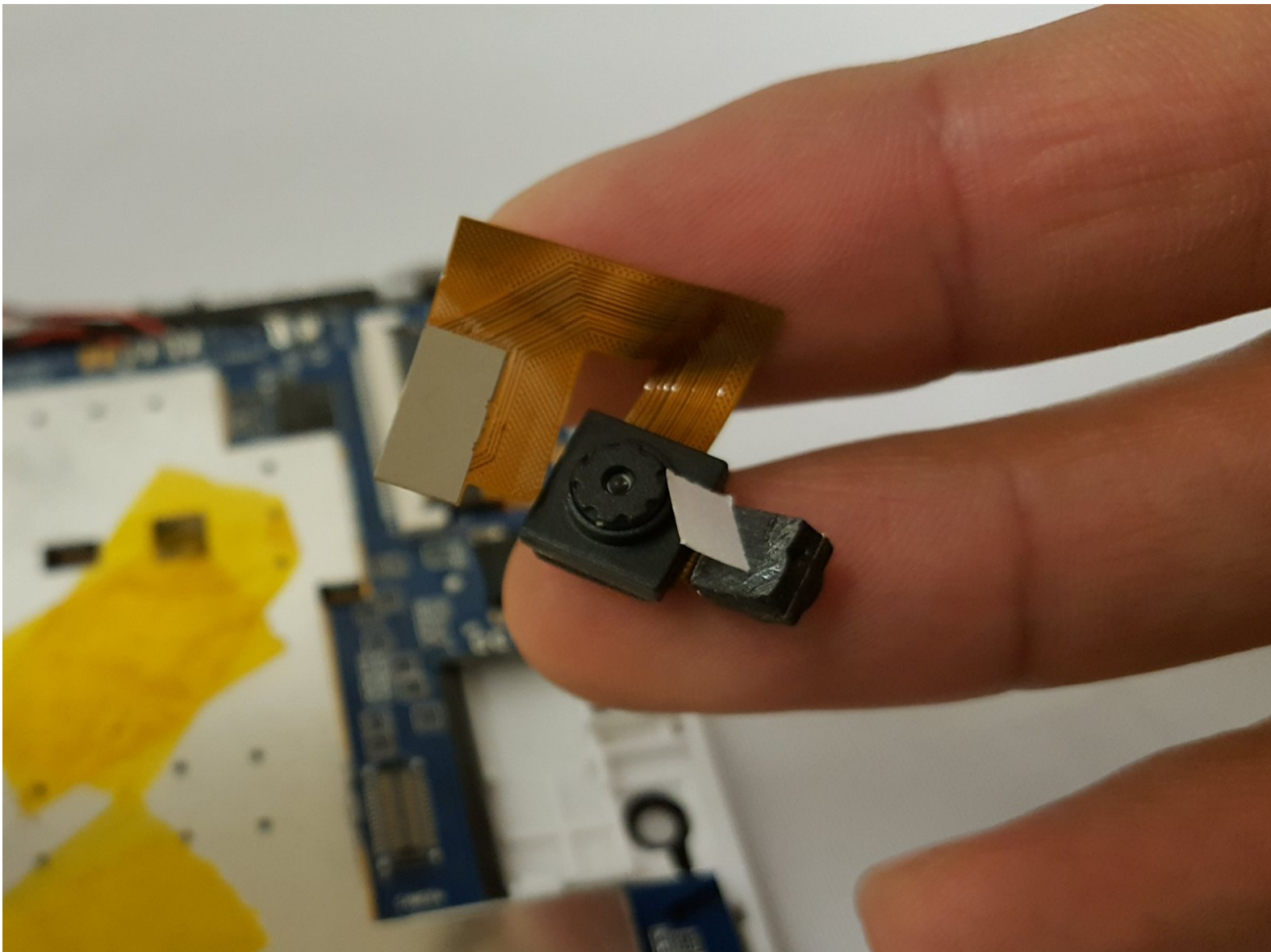




# Digital2 D2-861G Camera Replacement

To replace the front and rear camera of the device.

Written By: Eduardo Duran



---

## INTRODUCTION

This guide will be showing you how to replace the front camera that is 0.3 MP and the rear camera that is 2.0 MP. Be sure to carefully remove the camera to avoid damaging the device.

---



### TOOLS:

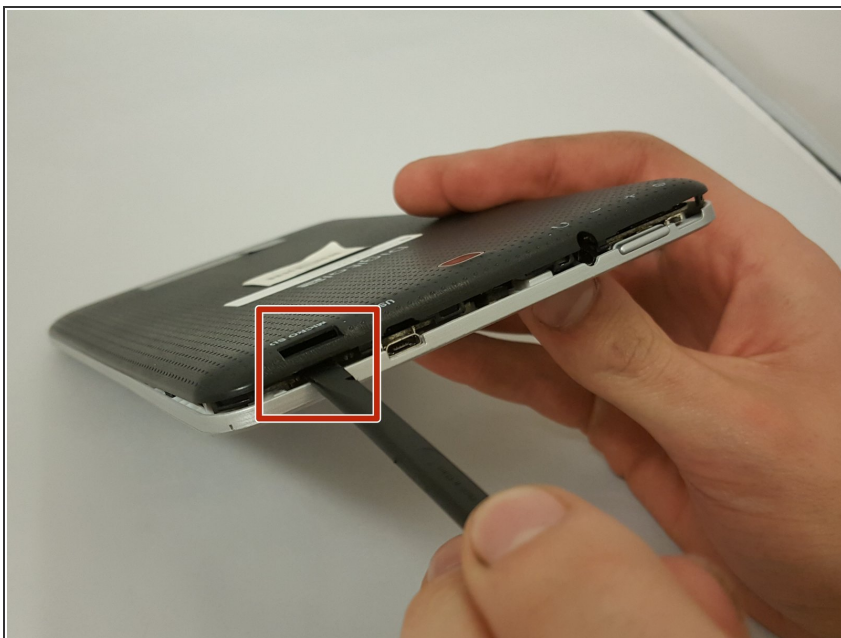
- [Spudger](#) (1)
-

## Step 1 — Camera



- ⚠ Working on your device while powered on may result in electric shock. Make sure to unplug and power down your device before you begin.
- ℹ Place your device on a soft cloth to avoid scratching the screen
- Flip your device over so back panel is facing upwards.

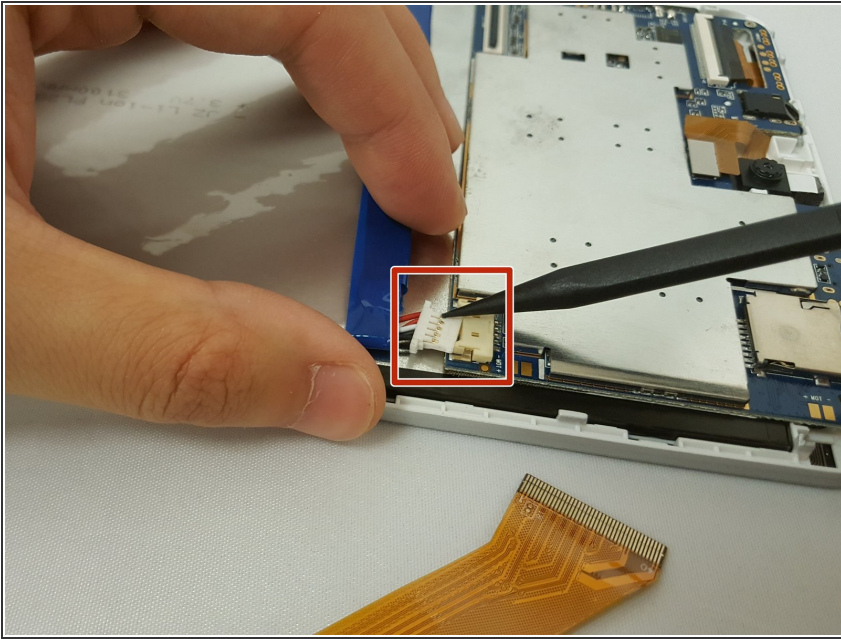
## Step 2



- ⚠ Do not use a lot of force as it can break the clips or the back panel.
- Insert spudger in the slot below the micro SD card.
- ℹ You should hear clips releasing as you pry along the edges.
- With the spudger tool, run along the edges of the backing undoing 20 plastic clips.

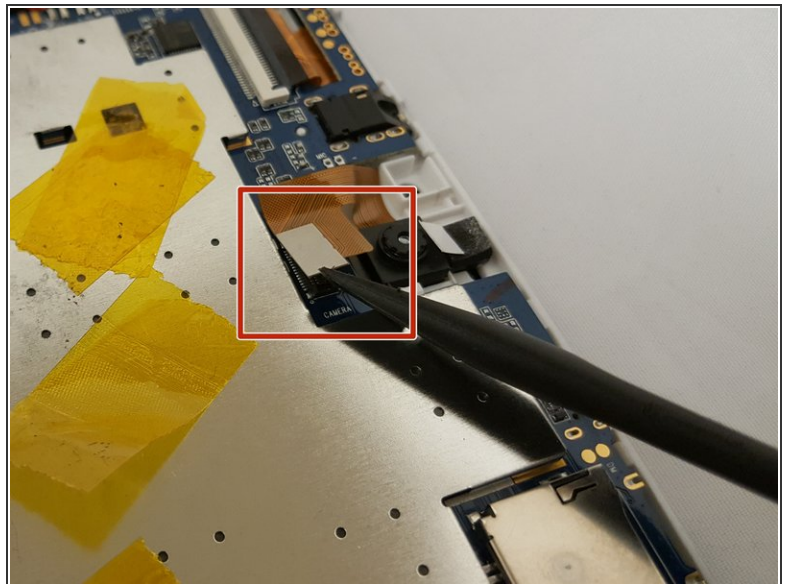
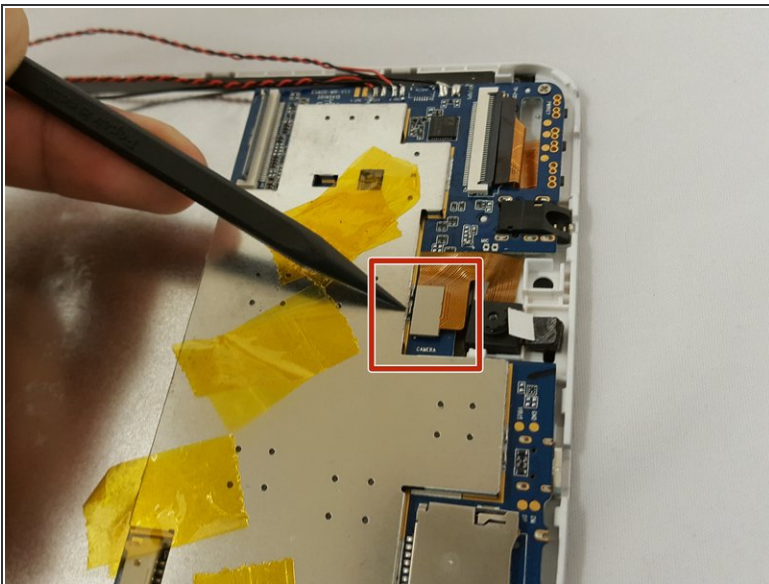


## Step 3



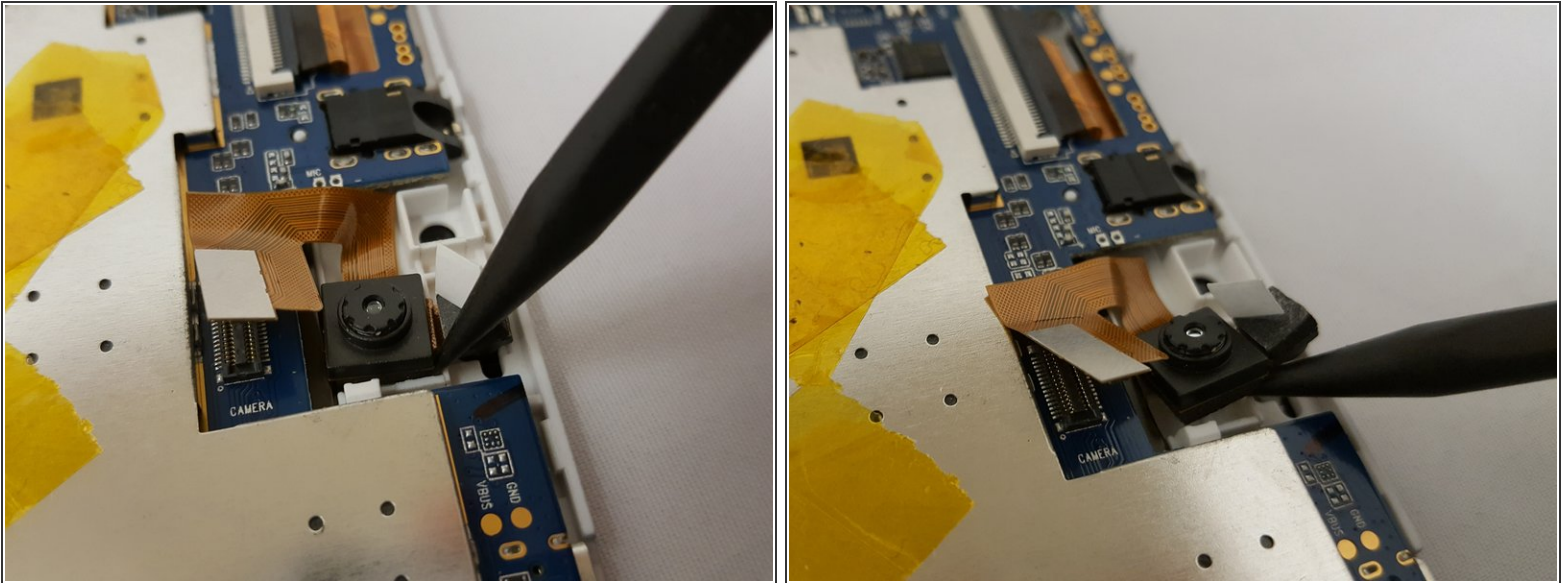
- ❗ Disconnecting the bundled cable connector helps avoid short circuiting anything on the device.
- Locate the bundled cable connector and disconnect it by simply pulling it gently or using a spudger.

## Step 4



- Locate and unplug the flat-top connector from the motherboard..
- To unplug the connector go under it with either side of the spudger and lift up.

## Step 5



⚠ Avoid pulling the gold connector as it can be damaged and/or broken.

- To remove the camera, simply use the pointed end of the spudger and insert it in the corner and gently lift.

To reassemble your device, follow these instructions in reverse order.