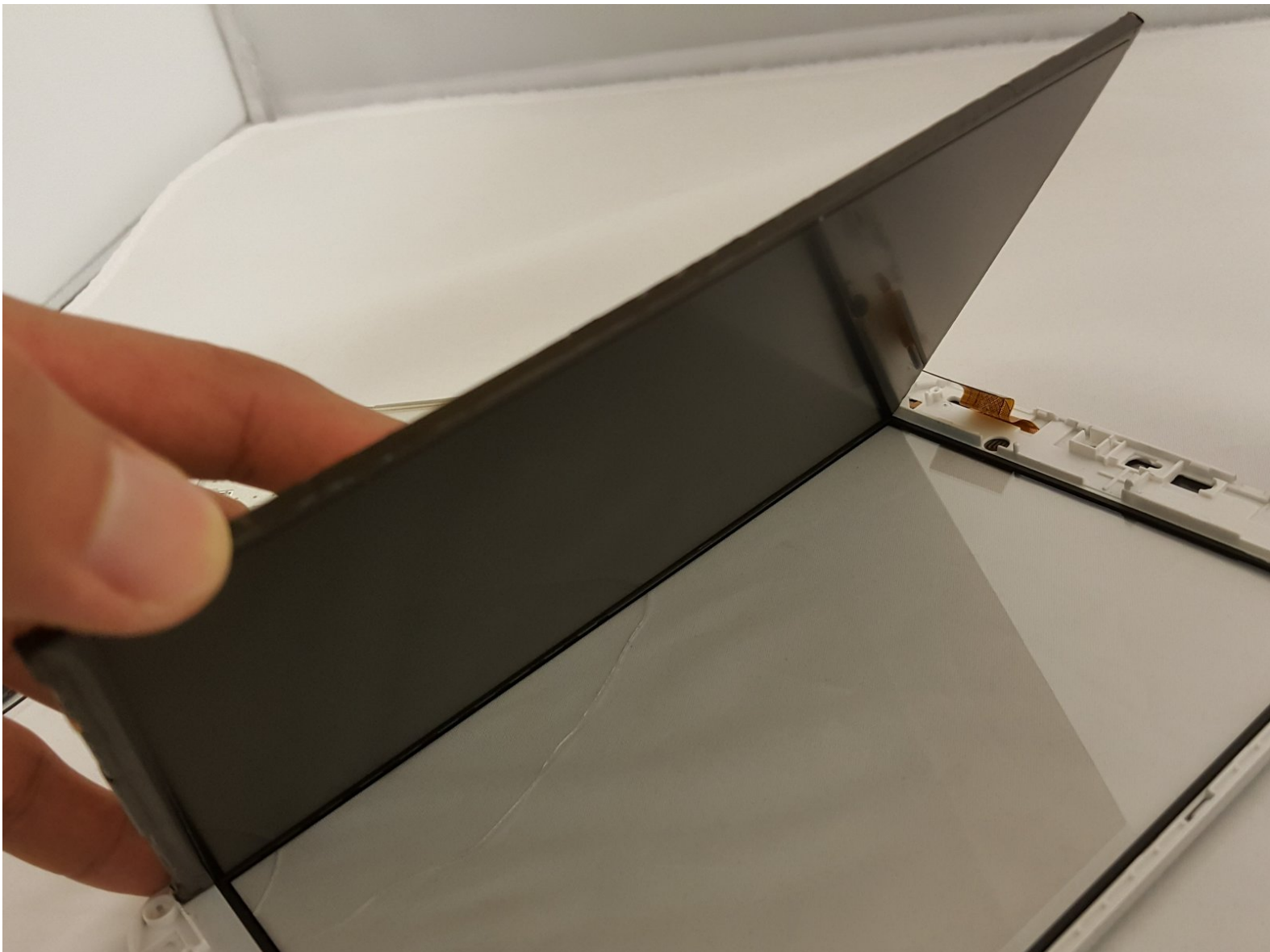




Digital2 D2-861G LCD Screen Replacement

To replace the LCD screen of the device.

Written By: Eduardo Duran



INTRODUCTION

This guide will be showing you how to replace the LCD screen. Be sure to carefully remove components to avoid damaging the device.

TOOLS:

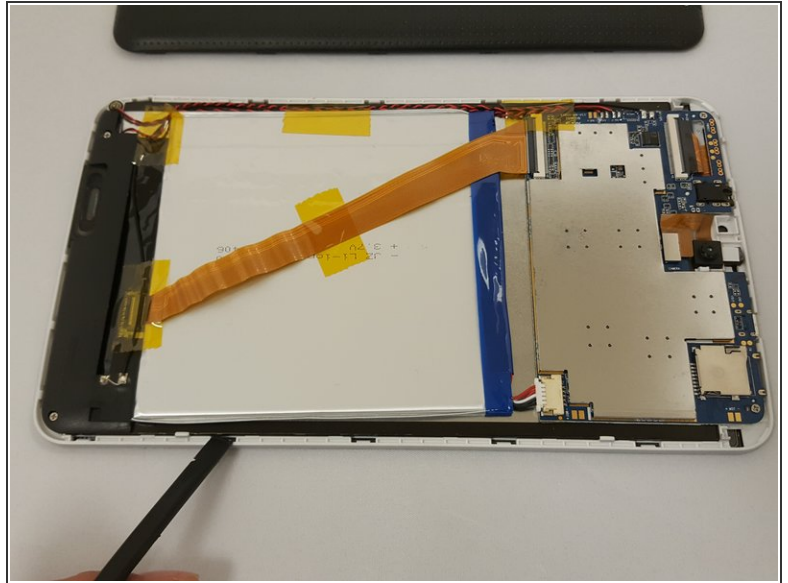
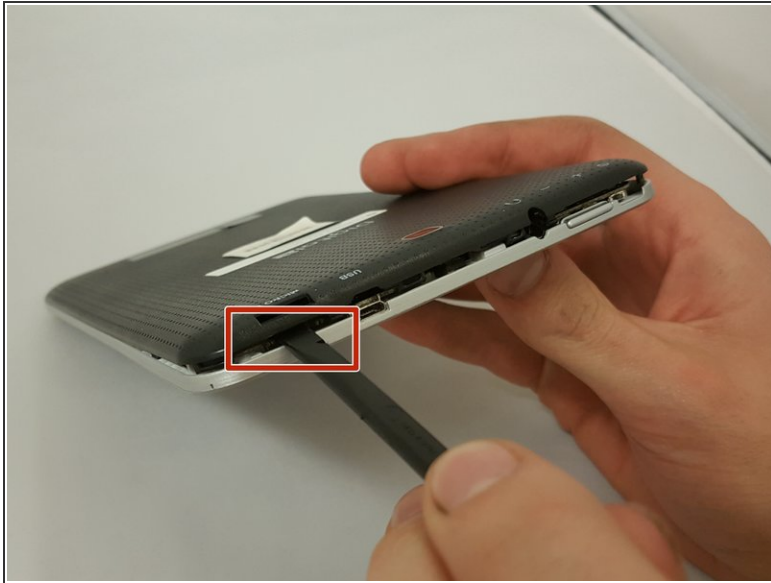
- [Spudger](#) (1)
 - [Phillips #00 Screwdriver](#) (1)
-


Step 1 — Battery



- ⚠ Working on your device while powered on may result in electric shock. Make sure to *unplug* and *power down* your device before you begin.
- ℹ Place your device on a soft cloth to avoid scratching the screen.
- Flip your device over so back panel is facing upwards

Step 2



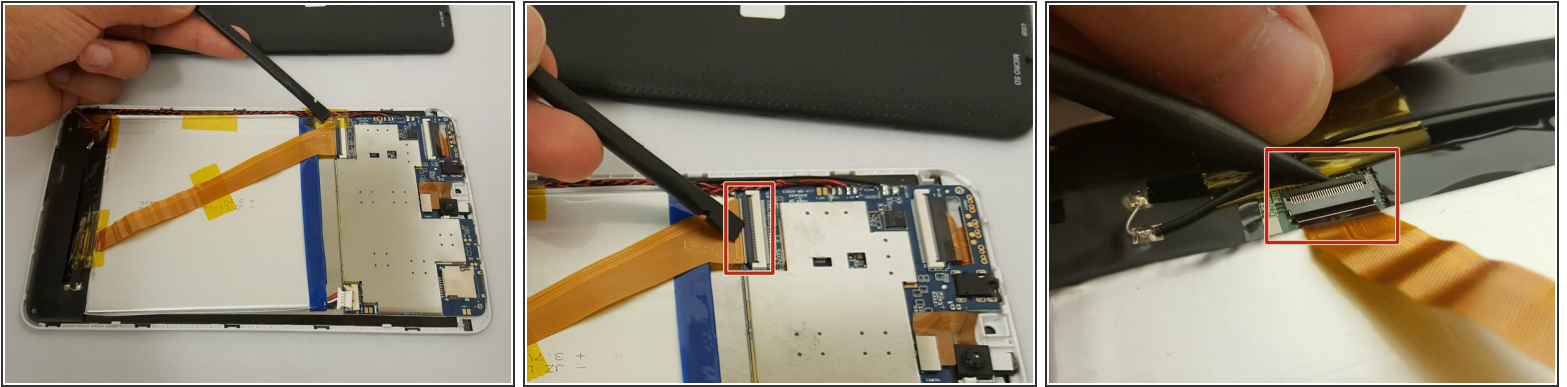
 Do not use a lot of force as it can break the clips or the back panel.

- Insert spudger in the slot below the micro SD card

 You should hear clips releasing as you pry along the edges.

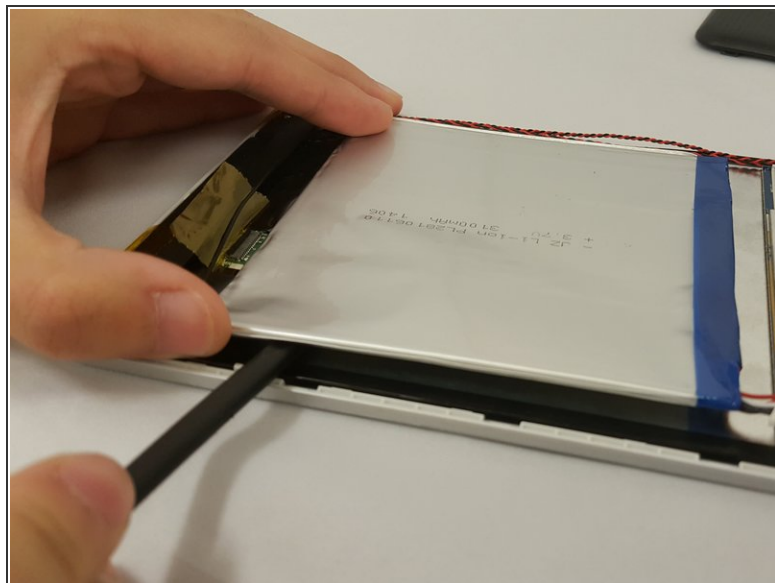
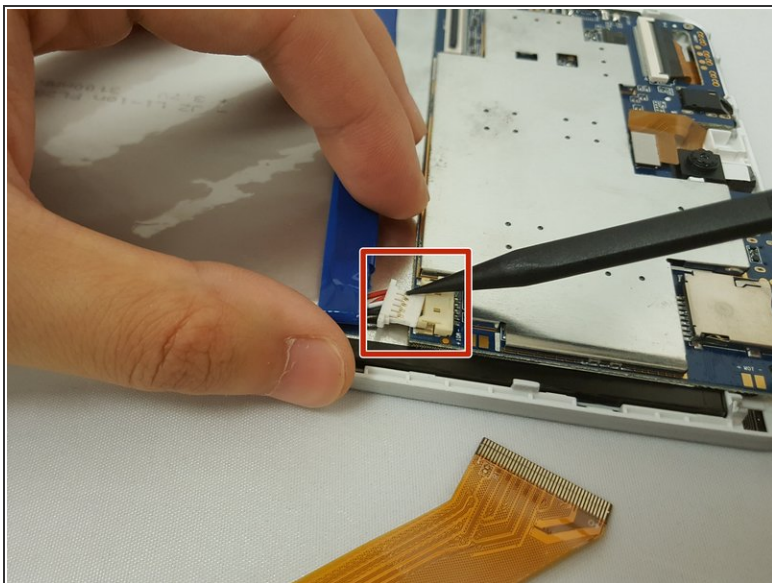
- With the spudger tool, run along the edges of the backing undoing 20 plastic clips.


Step 3



- ✦ Look at the images to locate the *black tabs*.
- ⓘ Carefully remove the tape to avoid damaging the device.
 - Remove **ALL** the yellow tape securing the gold colored ZIF (Zero insertion force) connector and the battery. *Discard* or *save* the tape if you would like.
 - To unclip the connector. Go under the black tab with a spudger or finger nail and simply lift up.

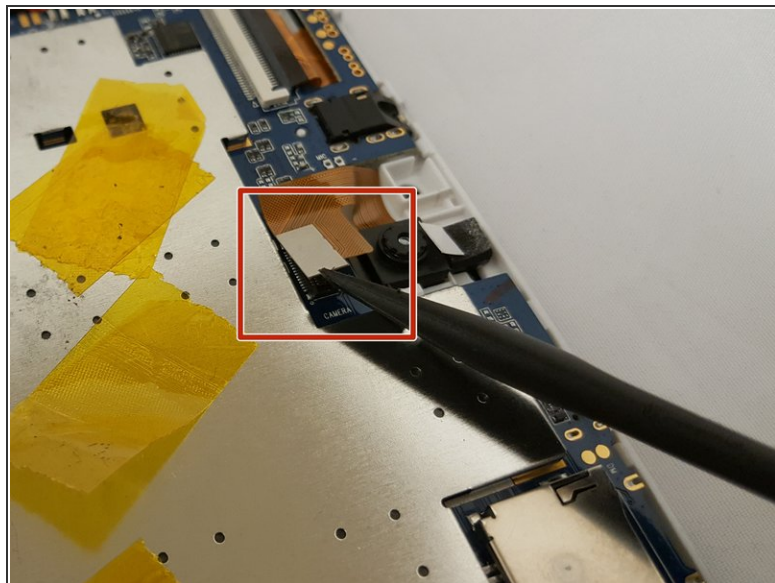
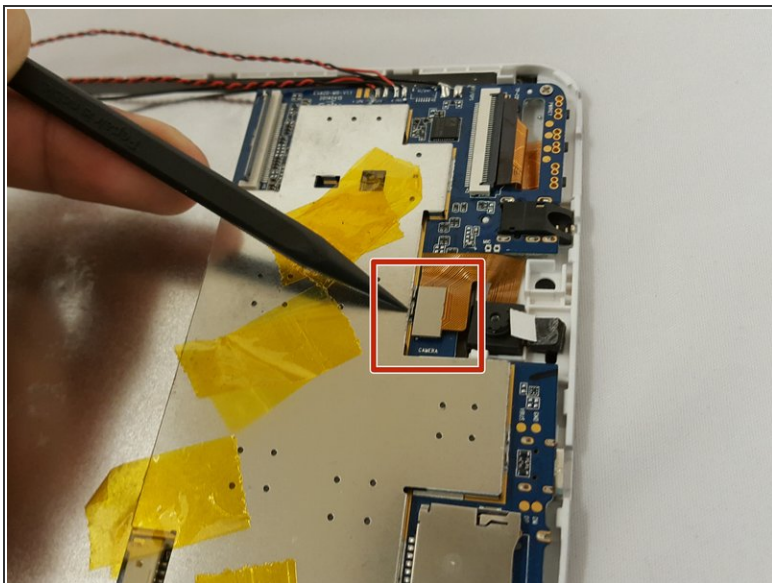
Step 4



 Make sure to not bend or puncture the battery when removing it.

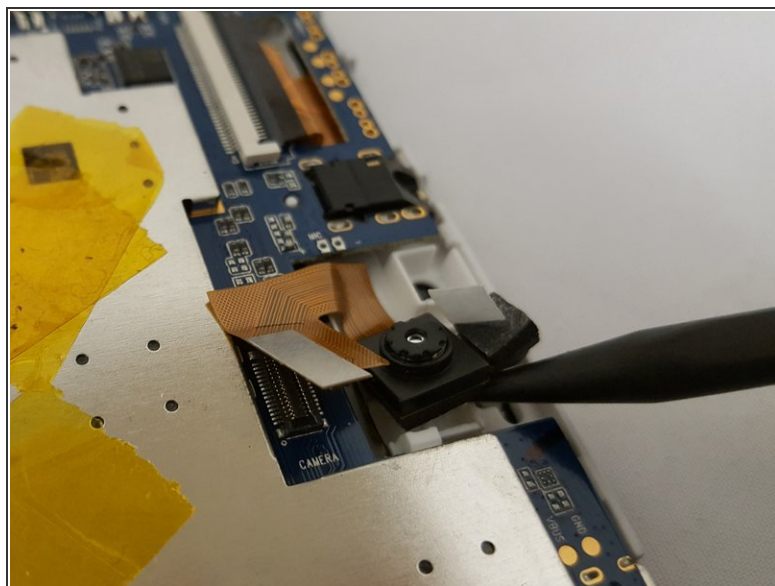
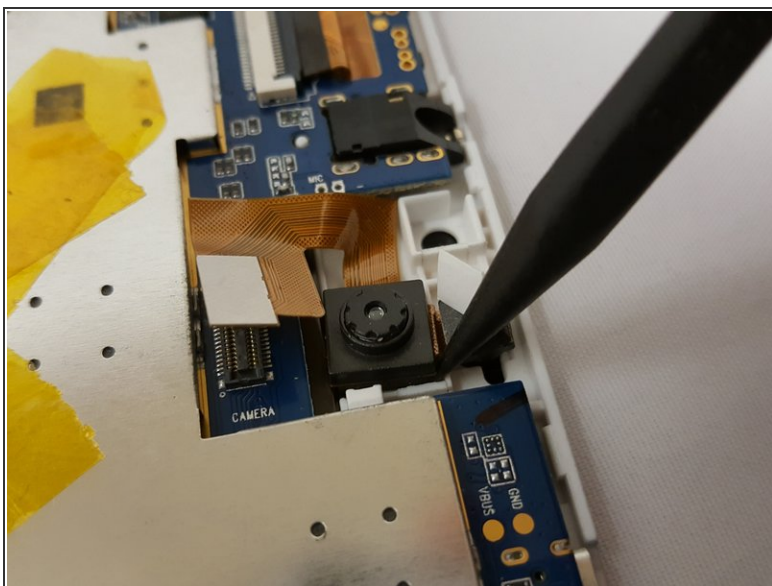
- Locate the bundled cable connector and disconnect it by simply pulling it gently with your hands or using a spudger.
- Use prying tools to carefully break the adhesive under the battery

Step 5 — LCD Screen



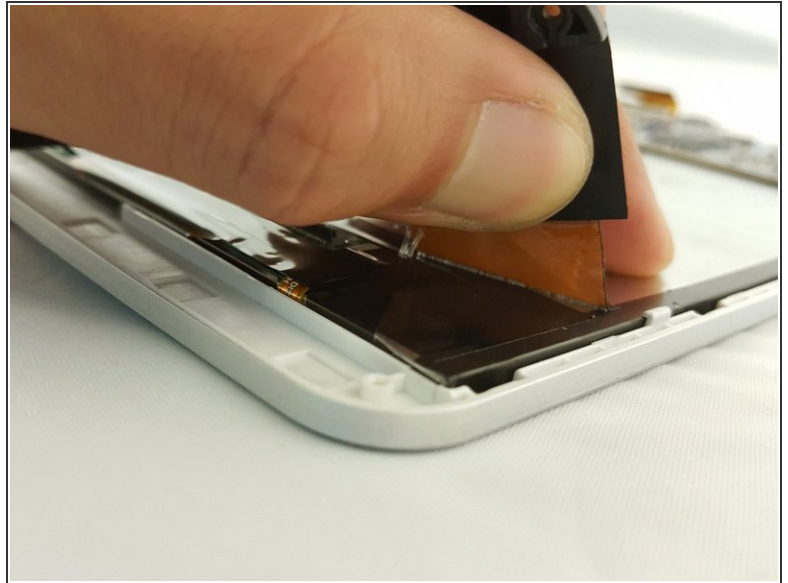
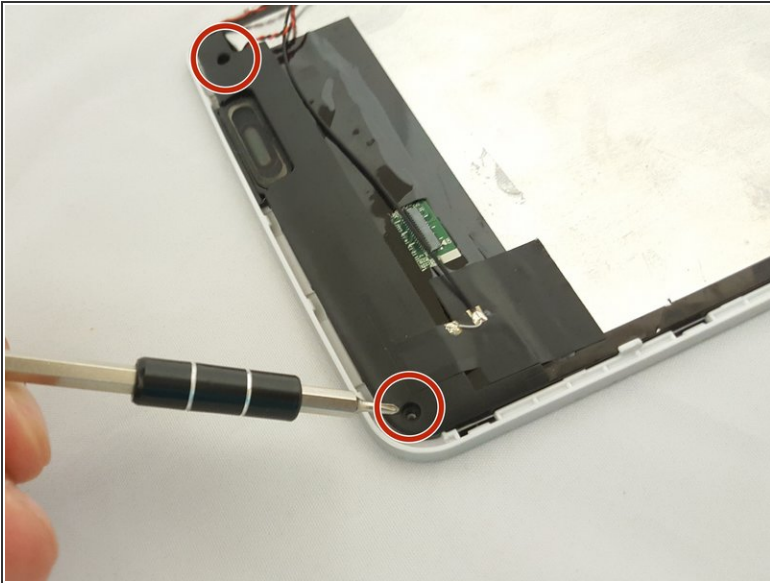
- Locate the flat-top connector. Go under it with the spudger and simply lift up.

Step 6



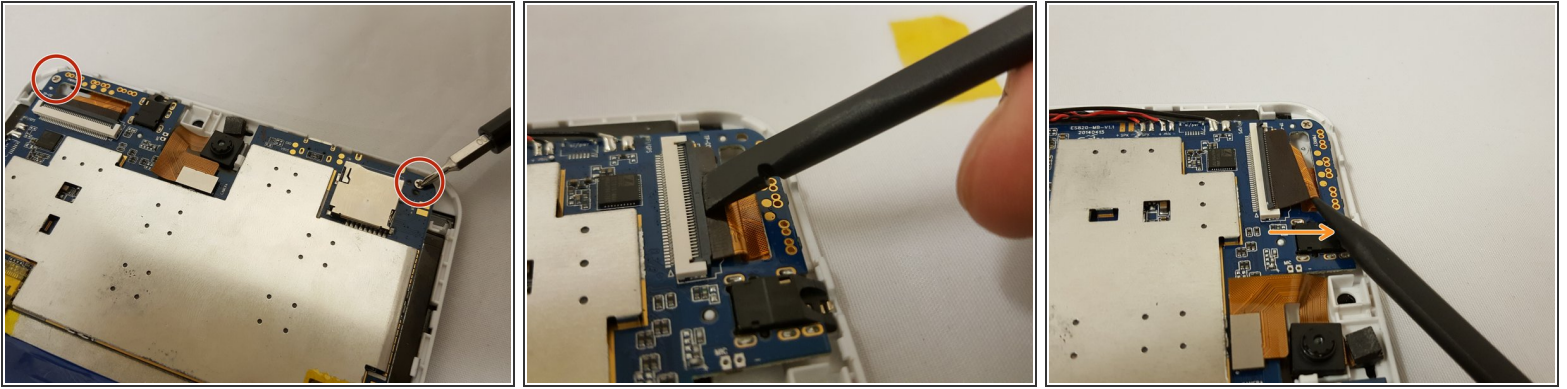
- To remove the camera, simply use the pointed end of the spudger and insert it in the corner and gently lift.

Step 7



- ⓘ Be sure to have a magnetic mat or anything magnetic to hold your screws!
- Remove two **3.51mm** screws located on the bottom corners of the device with your **Phillips #00 Screwdriver**.
- Carefully lift the casing and pull back the tape along with the soldered wire.
- ⓘ You can remove the soldered wire if you want or leave it connected. **Refer to iFixit's guide on how to Solder** [How To Solder and Desolder Connections](#)

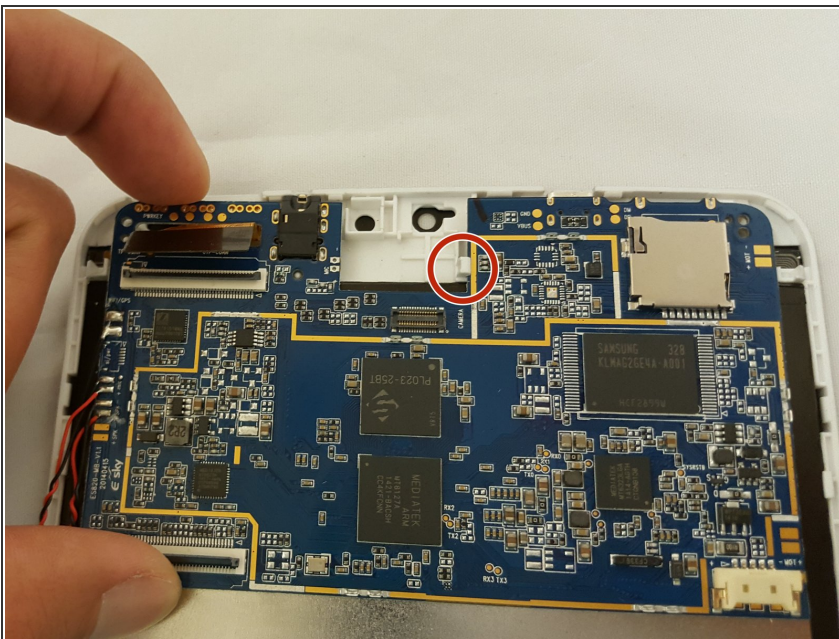
Step 8



i Make sure to have your magnetic board to hold your screws!

- Remove the two **3.51mm** screws that are located on the top corners of the device with the same phillips screwdriver..
- Next, unplug the ZIF connector and slide it out with the pointed side of the spudger.
- To unclip the connector, go under the black tap and simply lift with your finger nail or spudger.

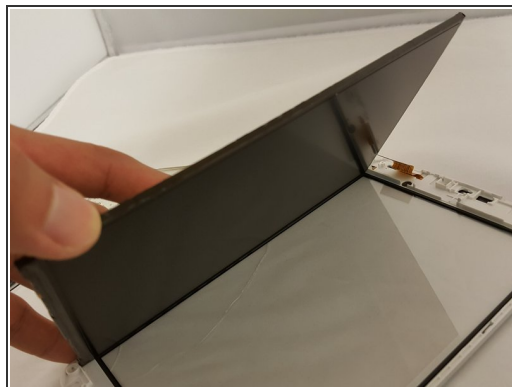
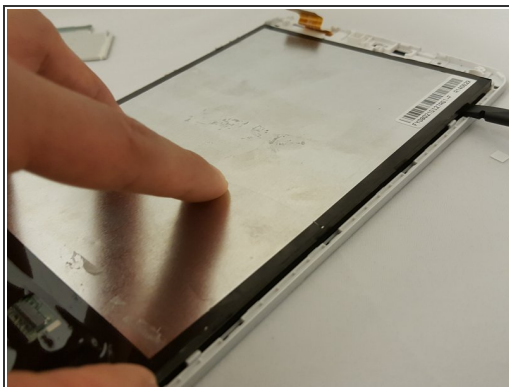
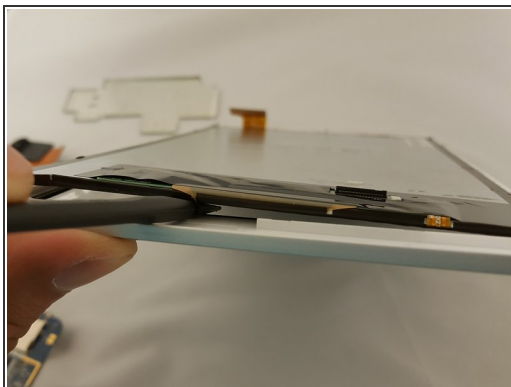
Step 9



⚠ Use little force or else you risk breaking the motherboard.

- Watch out for the ZIF connector!
- To remove the motherboard, grab the component on the top left and gently lift. Be careful with the clip holding the motherboard.

Step 10



- Now that every component is removed, use the flat side of the spudger and insert it on the bottom of the screen.
- Gently move along the edges to lift the screen.

Step 11



i If you have a damaged front case, take the opportunity to replace that as well.

To reassemble your device, follow these instructions in reverse order.