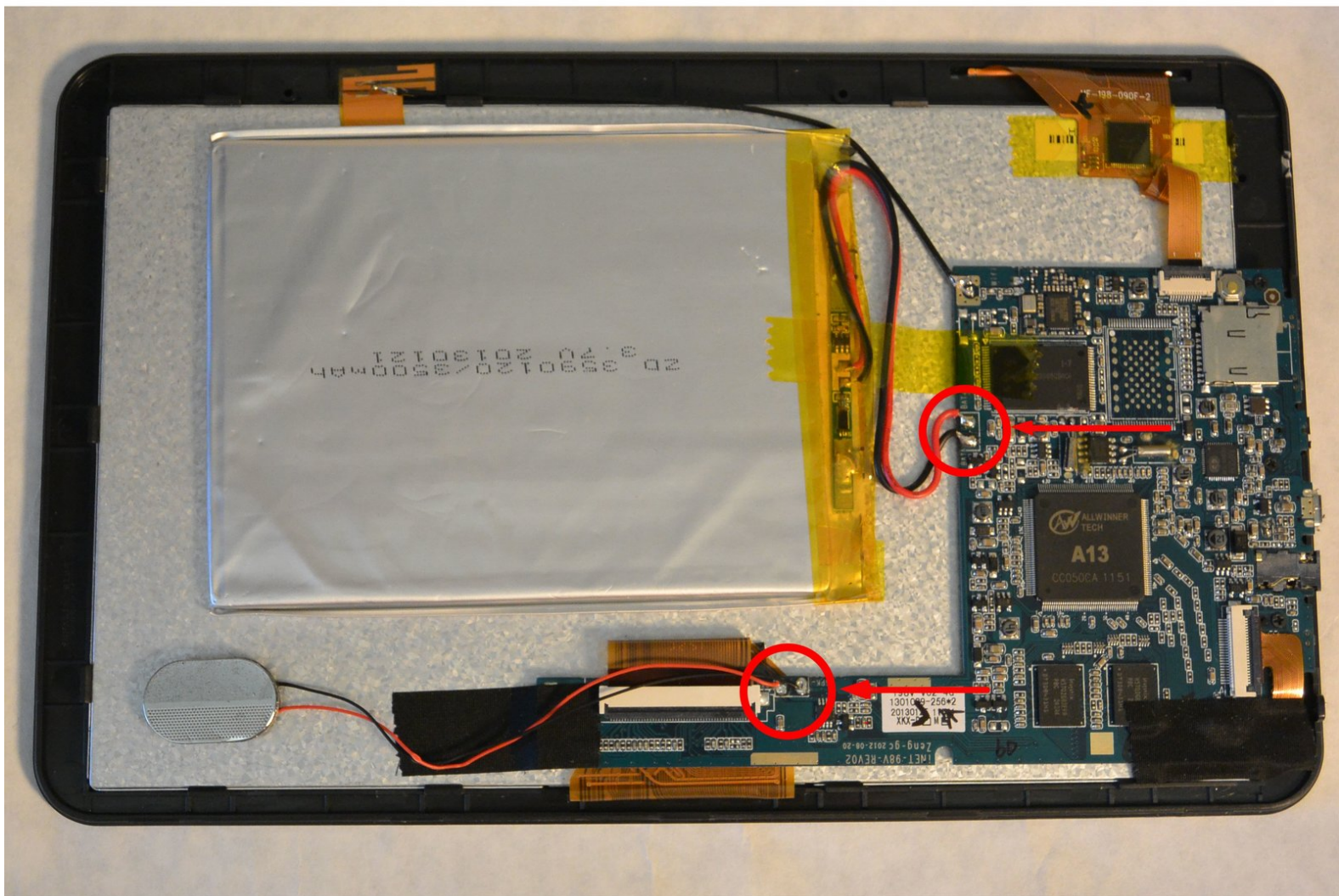




# Digital2 D2-912 Motherboard Replacement

To replace the main motherboard of the tablet.

Written By: Jason Wignot



# INTRODUCTION

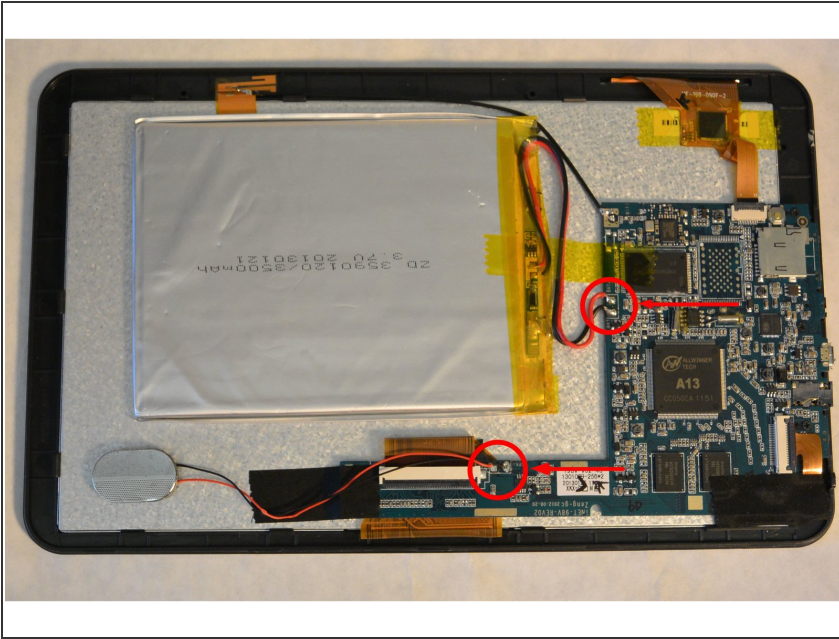
We will be taking out the entire motherboard of the tablet, in essence, the majority of the tablet. This requires carefully unbuckling lots of peripheral connectors.

---

## TOOLS:

- [Phillips #00 Screwdriver](#) (1)
  - [iFixit Opening Tools](#) (1)
  - [Soldering Iron](#) (1)
-

## Step 1 — Motherboard



- Refer to this [Teardown Guide](#) first to remove the cover:
- Using a soldering iron and solder sucker, remove the wires indicated in the two red circles from the motherboard.
- By removing the wires, you are detaching the battery and speaker from the motherboard.

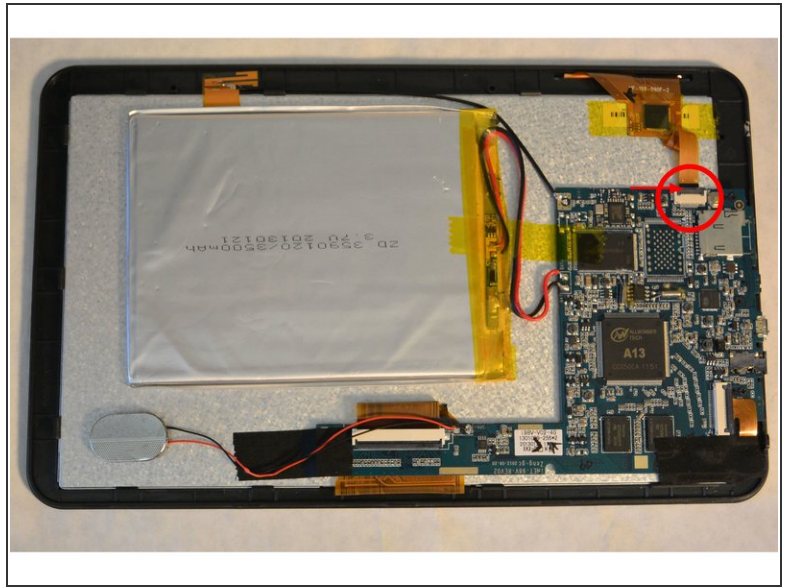
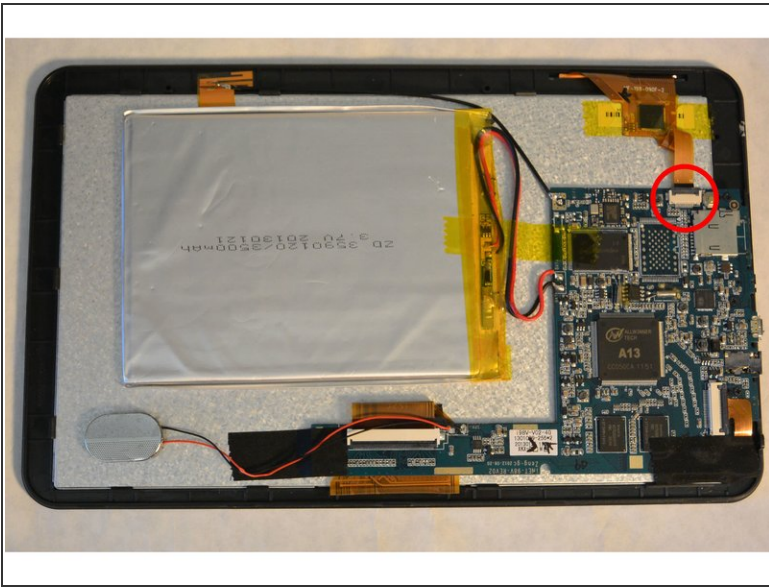
## Step 2



- Use the Philips head screwdriver to remove the three screws indicated in the circles.

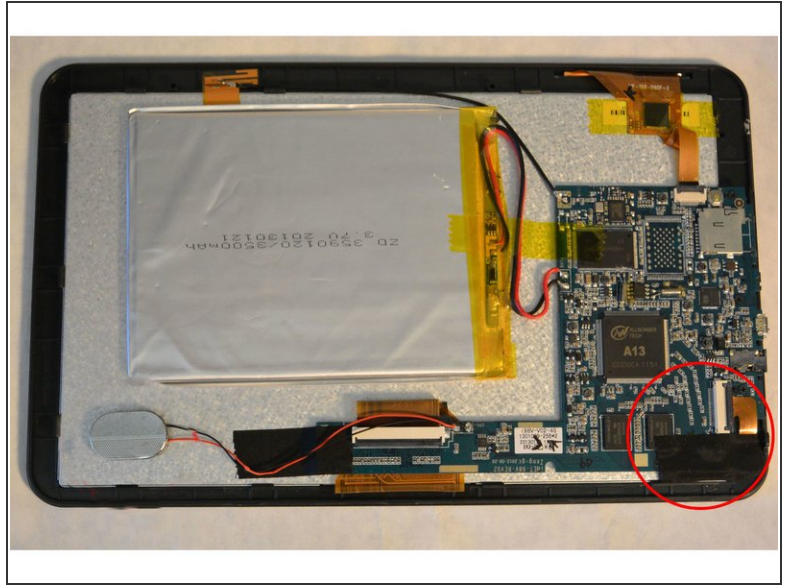
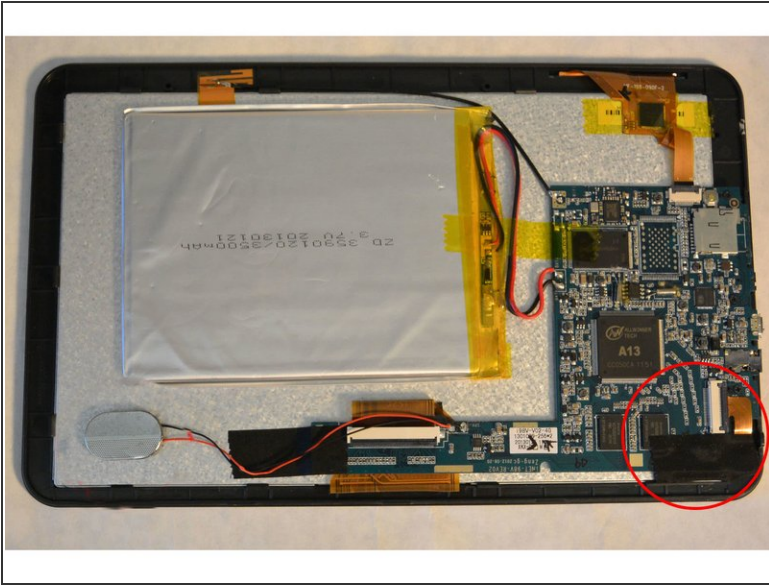


## Step 3



- Next, you will need to detached the capacitive touch controller from the motherboard.
- Flip the narrow black connector portion indicated with the arrow upward to release the ribbon.
- Remove the ribbon from the connector.

## Step 4



- Locate the camera found in the red circle.
- Flip the black portion (indicated with arrow) of the connector up to release ribbon.
- Remove the black tape to release the camera from the motherboard.
- Remove ribbon from connector.
- At this point, the motherboard should not be held down by anything else. Remove and replace the board.

To reassemble your device, follow these instructions in reverse order.