



Dirt Devil Infinity VS8 Turbo Disassembly

How to remove main panel from Dirt Devil VS8 vacuum cleaner to get access to engine.

Written By: MarW





TOOLS:

- [Pro Tech Toolkit](#) (1)
-

Step 1 — Dirt Devil Infinity VS8 Turbo Disassembly



- Remove 4 screws on the bottom side using Philips screwdriver

Step 2



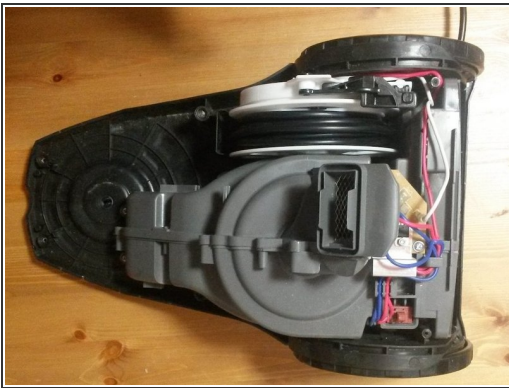
- Remove 2 buttons by levering them using slot screwdriver.
- Remove 2 screws.

Step 3



- Remove last spanner screw, maybe you can do it using spanner head (pig nose) screwdriver.
- I have made special key to turn it using piece of 1mm wire and screw.

Step 4



- Now you can see how it looks inside, get access to engine or cable roller.

To reassemble your device, follow these instructions in reverse order.