



# Dirt Devil Scorpion Quick Flip Circuit Board Replacement

This guide walks through the Circuit Board replacement process for the Dirt Devil Scorpion Quick Flip.

Written By: Nicholas Reed Edwards



## INTRODUCTION

The circuit board of the device processes all logic and button input of the device. So if your Dirt Devil Scorpion Quick Flip fails to turn on or adjust speeds, it may point to an issue with the circuit board. If replacing the circuit board doesn't solve the issue then try replacing [Dirt Devil Scorpion Quick Flip Motor](#) or [Dirt Devil Scorpion Quick Flip Power Cord](#) replacement guides. This guide will require soldering, so check out our [How to Solder and Desolder Connections guide](#) if you are unfamiliar with the process.

---

### TOOLS:

- [Phillips #1 Screwdriver](#) (1)
  - [Soldering Iron](#) (1)
  - [Utility Scissors](#) (1)
-

## Step 1 — Circuit Board



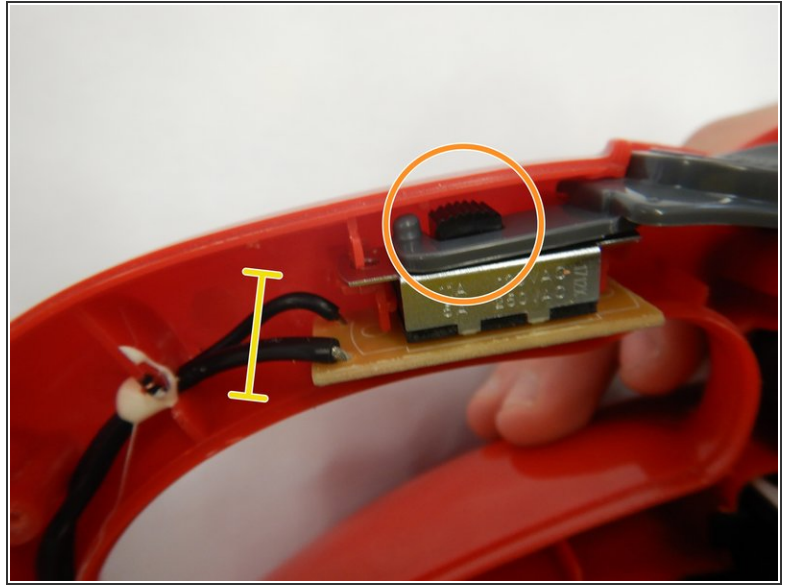
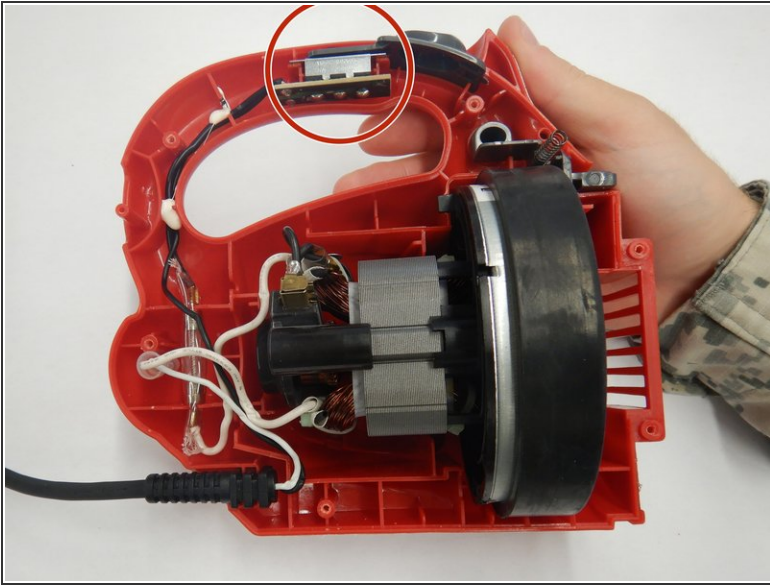
- Push the button on the left-hand side of the handle.
- Remove the filter holder from the main body.

## Step 2



- Remove the first two 4 mm screws using a Phillips #1 Screwdriver.
- Remove the last four 4 mm screws using a Phillips #1 Screwdriver.
- Carefully take the device a part.

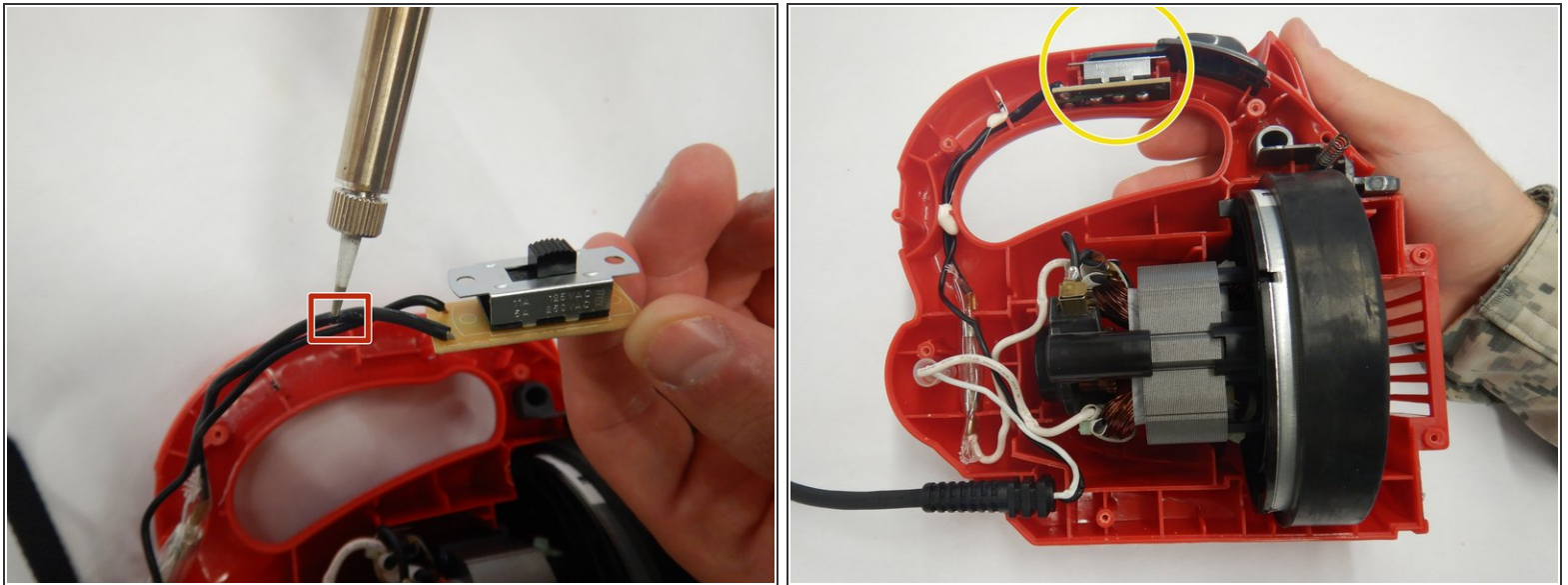
### Step 3




- Identify the circuit board located in the inside of the handle.
- Remove the gray switch located on top of the circuit board.
- Using utility scissors, cut the wires 1/2 inch away from the circuit board.



## Step 4



- Solder the new circuit board to the existing wires.
  - Using electrical tape or heat shrink tubing, cover the soldered area.
  - Place the new circuit board into the correct spot inside the handle.
-  Check out our [How to Solder and Desolder Connections guide](#) if you are unfamiliar with the soldering process.

To reassemble your device, follow these instructions in reverse order.