



# Dirt Devil Scorpion Quick Flip Motor Replacement

This guide walks through the motor replacement process for the Dirt Devil Scorpion Quick Flip.

Written By: Adam Mooney



---

## INTRODUCTION

The motor on the Dirt Devil Scorpion Quick Flip has been reported to slow down and not operate at its maximum level over time. These symptoms point to an issue with the motor, which is responsible for providing the suction forces allowing the vacuum to work. This guide will demonstrate how to replace the motor in this device. This guide will require soldering, so check out our [How to Solder and Desolder Connections guide](#) if you are unfamiliar with the process.



### TOOLS:

- [Soldering Iron](#) (1)
  - [Utility Scissors](#) (1)
  - [Phillips #1 Screwdriver](#) (1)
-

## Step 1 — Motor



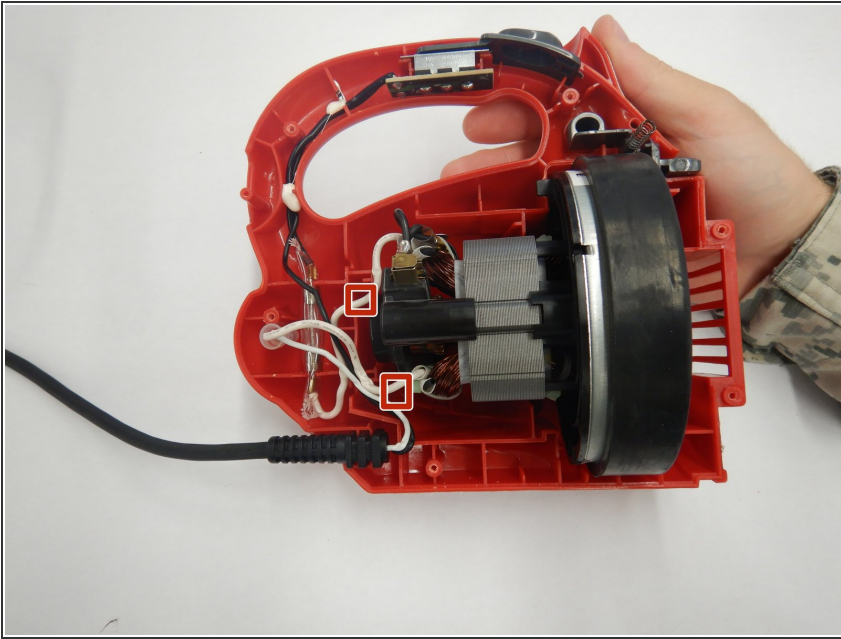
- Gently remove filter adapter from the vacuum body by pressing the gray plastic release button.

## Step 2



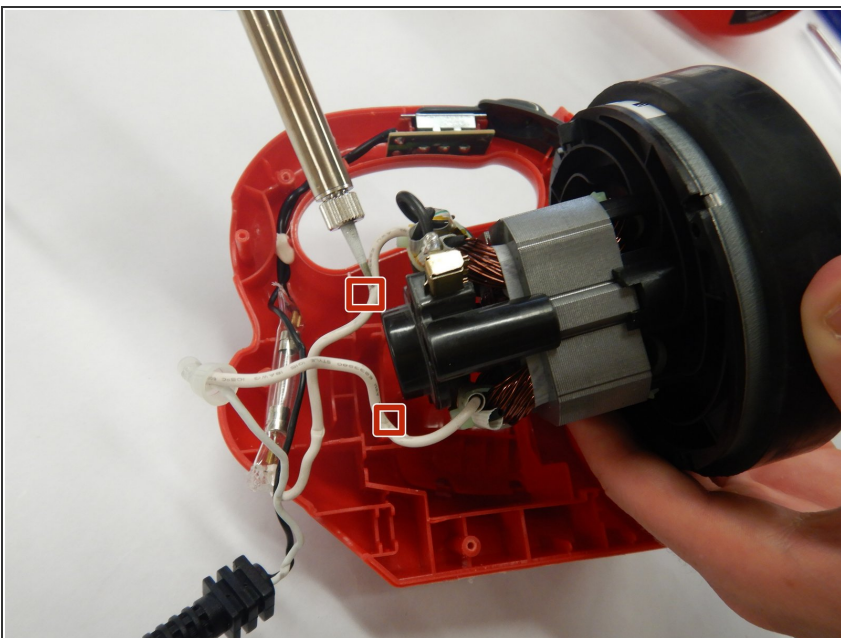
- Place the vacuum body on its left side and remove all 4mm screws with a Phillips #1 screwdriver.

### Step 3



- Carefully take apart the shell of the vacuum body.
- Cut the two wires attached to the motor and remove the motor from the body.

### Step 4



- Solder the wires from the replacement motor to the wires connecting it to the power cord.
- Carefully place the replacement motor back into its correct position in the vacuum body.
- ⓘ Check out our [How to Solder and Desolder Connections guide](#) if you are unfamiliar with the soldering process.

To reassemble your device, follow these instructions in reverse order.