



Dirt Devil Scorpion Quick Flip Power Cord Replacement

This guide shows you how to replace a faulty power cord on the Dirt Devil Scorpion Quick Flip.

Written By: Corbet E Warren



INTRODUCTION

The power cord on the Dirt Devil Scorpion Quick Flip has been known to fail by consumers. This guide walks you through the replacement of a power cord on one of these vacuums.



TOOLS:

- [Phillips #1 Screwdriver](#) (1)
 - [Soldering Iron](#) (1)
 - [Utility Scissors](#) (1)
-

Step 1 — Power Cord



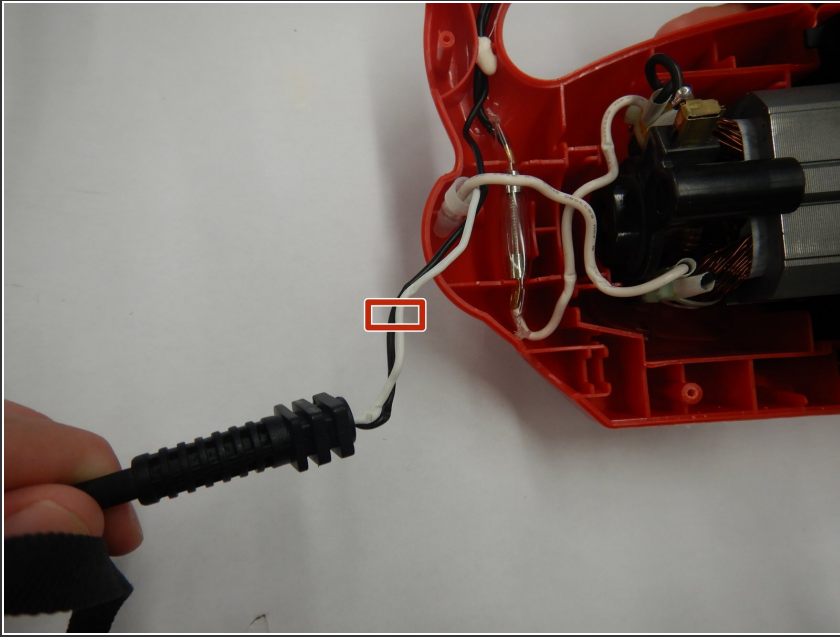
- While holding the device by the handle, press the button on the left-hand side of the vacuum handle in order to release the nozzle from the body.

Step 2



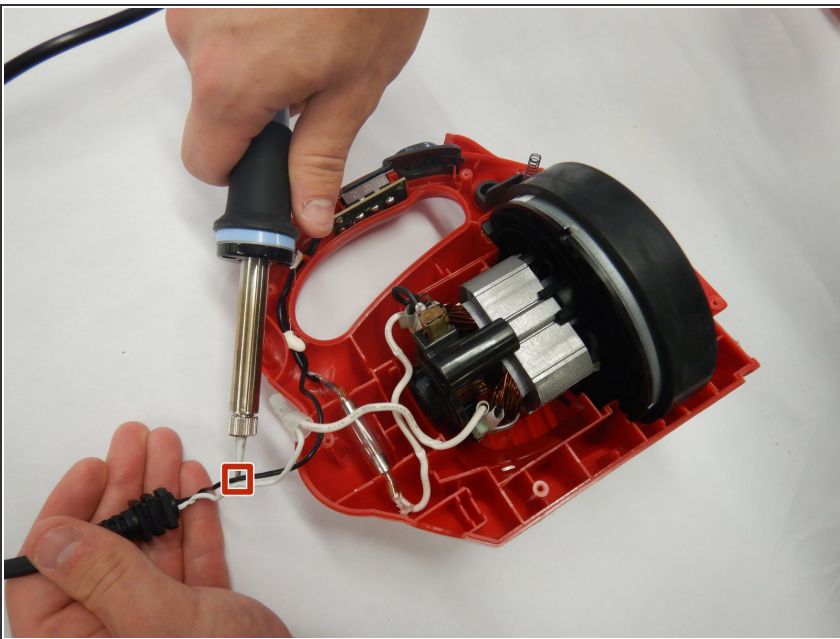
- Using a Phillips #1 Screwdriver, remove all six of the 4 mm screws holding the shell together.

Step 3



- Using utility scissors, cut the black and white cables approximately an inch and a half above where they connect to the faulty power cord.

Step 4



- Using a soldering iron, fuse the black and white cables from the new power cord to where the previous cord was cut away.
- Using electrical tape, cover the exposed area.
- ⓘ Check out our [How to Solder and Desolder Connections guide](#) if you are unfamiliar with the soldering process.

To reassemble your device, follow these instructions in reverse order.