



Disabling DualShock 4's Blue LED

Annoyed by the Always-On Blue LED ? No more !

Written By: Darie H



INTRODUCTION

Disabling DualShock 4's Blue LED



TOOLS:

- [Phillips #00 Screwdriver](#) (1)
 - [iFixit Opening Tools](#) (1)
-

Step 1 — Disabling DualShock 4's Blue LED



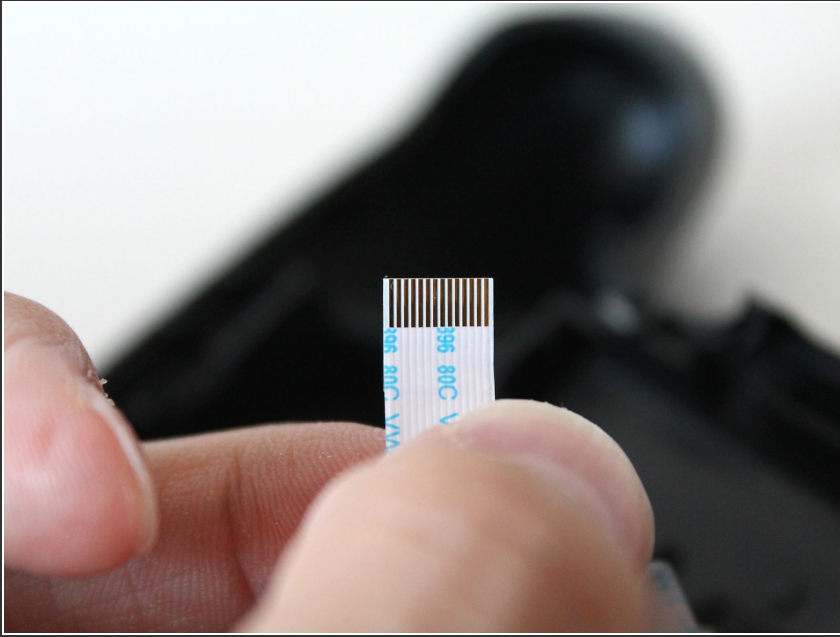
- Remove the four Phillips #00 screws from the back of the controller.

Step 2



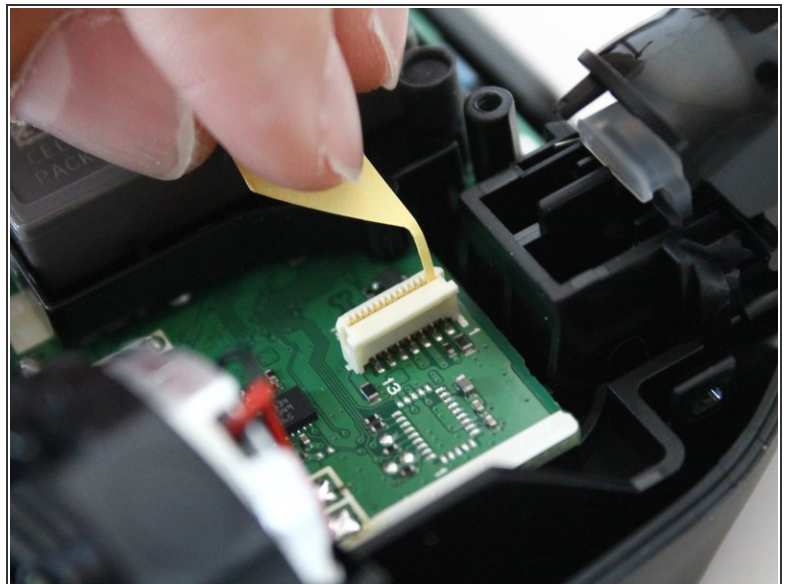
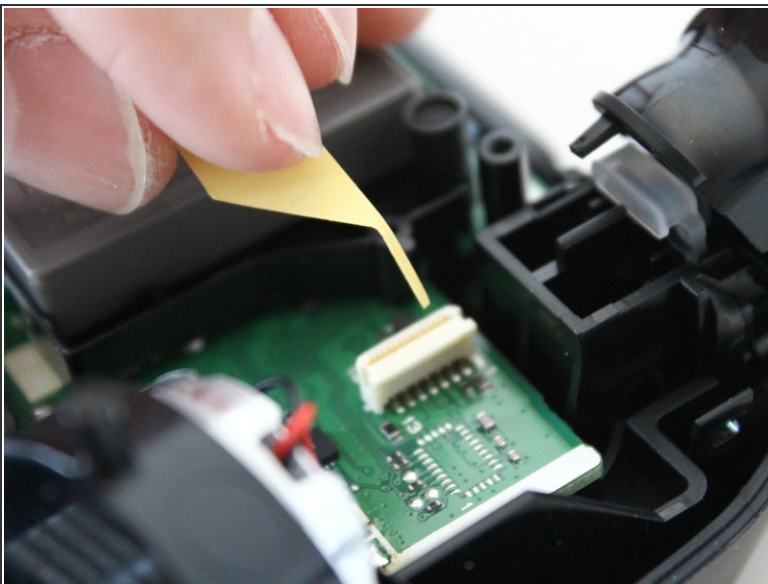
- Remove the bottom half of the controller while monitoring the triggers and springs within.

Step 3



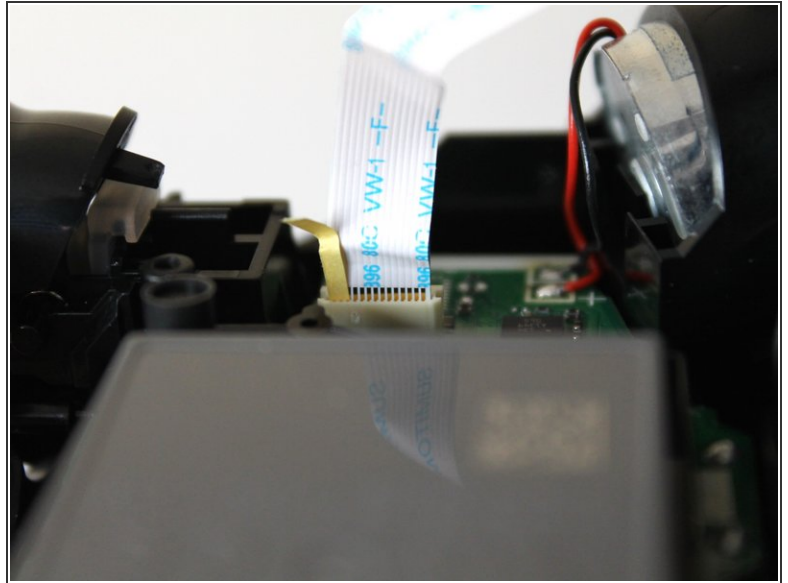
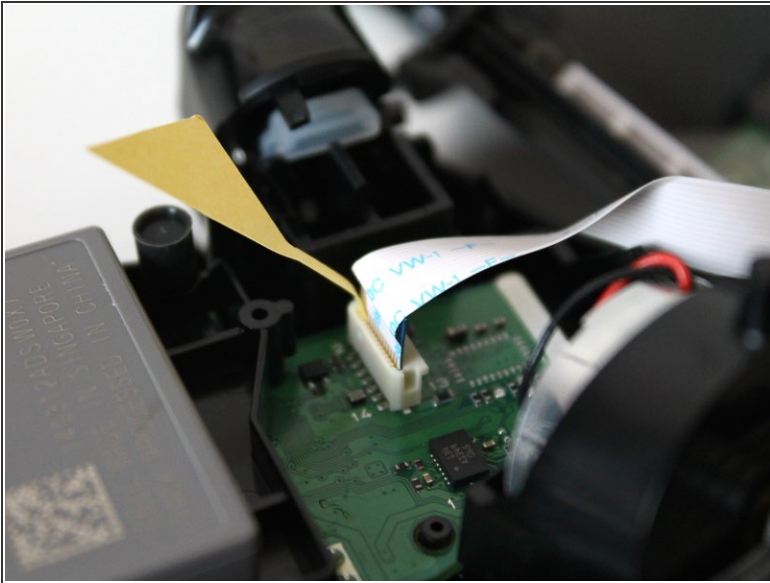
- Pull the ribbon cable out of the LED/USB connector assembly in the center of the controller.


Step 4



- Place a thin piece of paper in front of the last 2 pins (counting from left to right).
 - ⓘ The paper will prevent the motherboard from completing the circuit that enables the blue LED.

Step 5



 Don't twist the ribbon cable when inserting it.

Step 6



- Insert back ribbon cable with piece of thin paper already inserted.

Step 7



- Connect the bottom half of the DualShock 4 controller together.
- Rescrew 4 Phillips screws on the back of the controller.

All you have to do now - is embrace the darkness; don't forget to screw the thing back together though :)