



# Disassembling Apple AirPort Extreme Model A1034 Outer Case

In this guide you will be shown how to remove the outer case on the Apple AirPort Extreme Model A1034.

Written By: Travis Go



---

## INTRODUCTION

This is a step-by-step guide to remove the outer case on the AirPort Extreme Model A1034.



### TOOLS:

- [Phillips #00 Screwdriver](#) (1)
  - [T7 Torx Screwdriver](#) (1)
-

## Step 1 — Outer Case



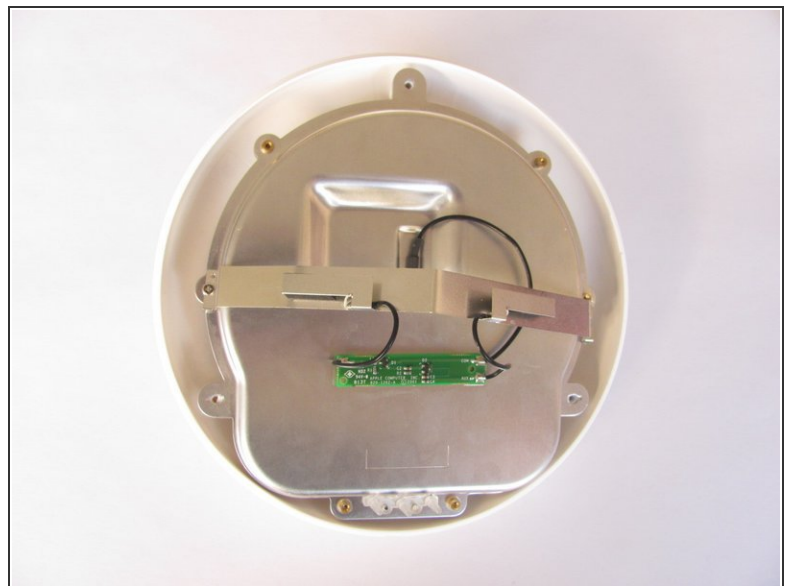
- Remove the three 14.3mm T7 Torx screws from the bottom of AirPort.

## Step 2



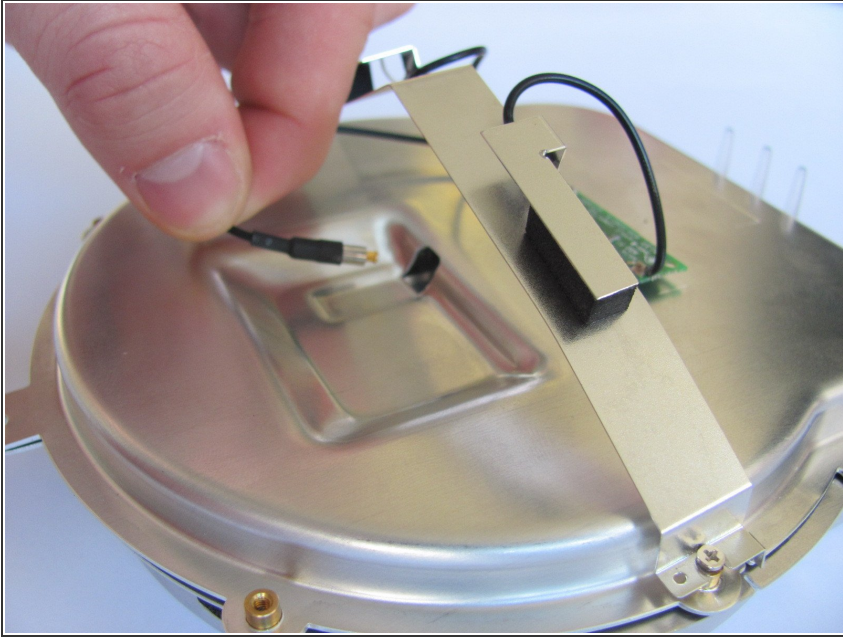
- Remove the 5.1mm Phillips screw from the bottom of the AirPort. This screw is located under the identification sticker. You will have to remove the sticker or make a hole to remove it.

## Step 3



- Lift the bottom and top casing straight apart and then lift metal casing straight up from the bottom plastic casing.

## Step 4



- Unplug the black connector on the top of the metal casing by gently pulling horizontally.

To reassemble your device, follow these instructions in reverse order.