



# Disassembling Breville BKC600XL Bottom Covers

Disassemble bottom covers to prepare for needed repairs and/or replacements.

Written By: Antonio



---

## INTRODUCTION

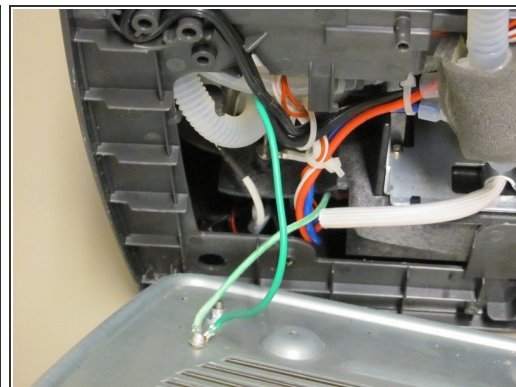
This guide acts as a prerequisite for removing or replacing any part located inside the main body of the brewer.



### TOOLS:

- [Phillips #0 Screwdriver](#) (1)
-

## Step 1 — Bottom Cover #1

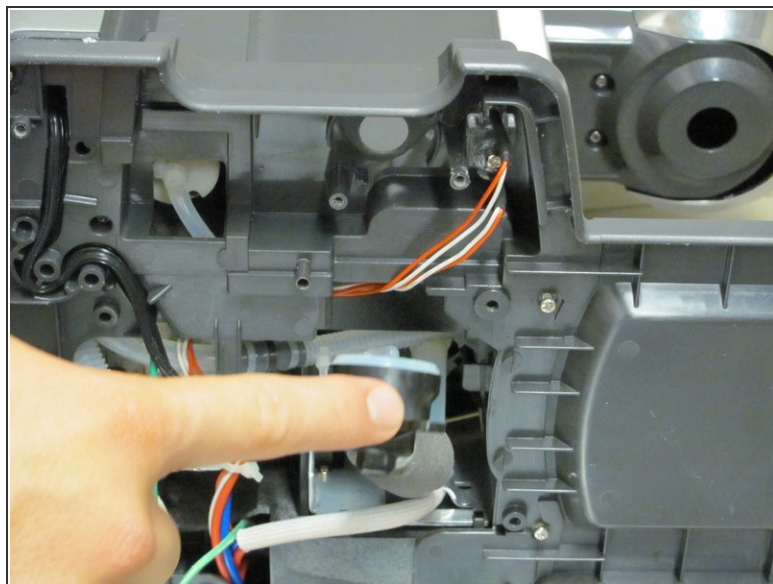
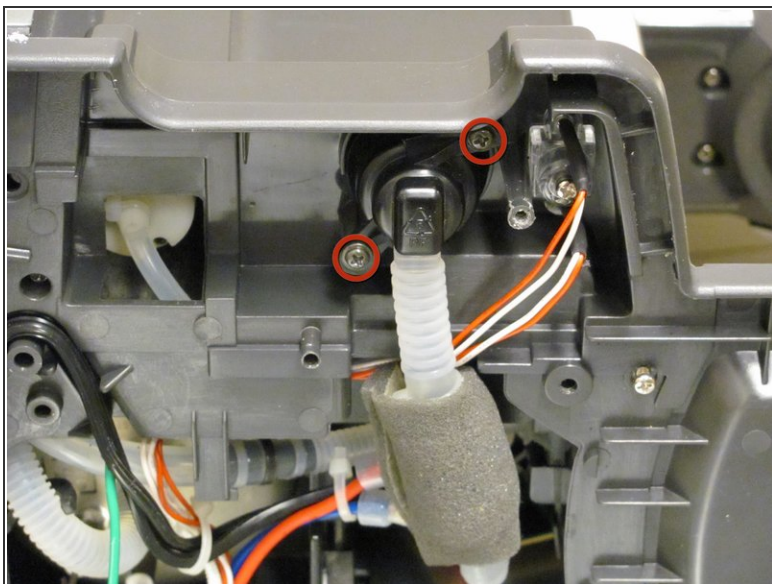


- Use a Phillips #0 screwdriver to remove the following ten screws:

- Four 18mm Phillips screws.
- Four 9.75mm Phillips screws.
- Two 8mm Phillips screws.

⚠ The cover will not remove entirely. Keep *green* ground wire attached to the cover.

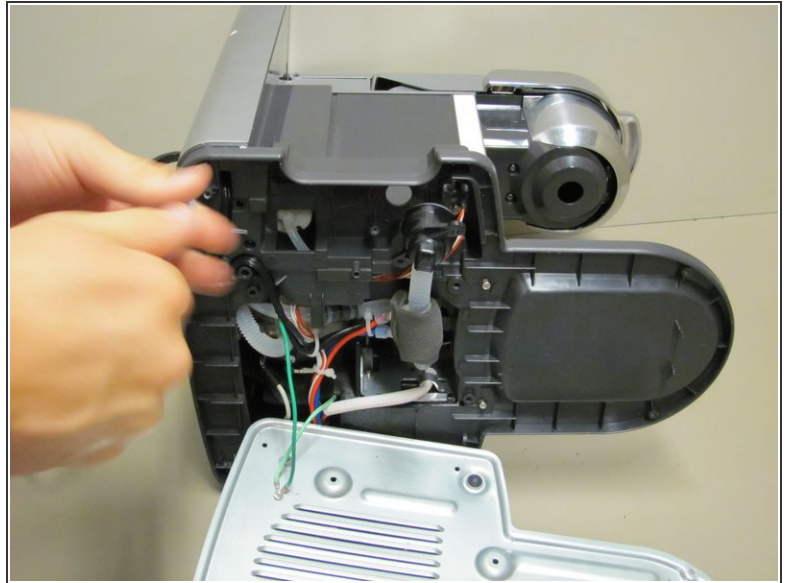
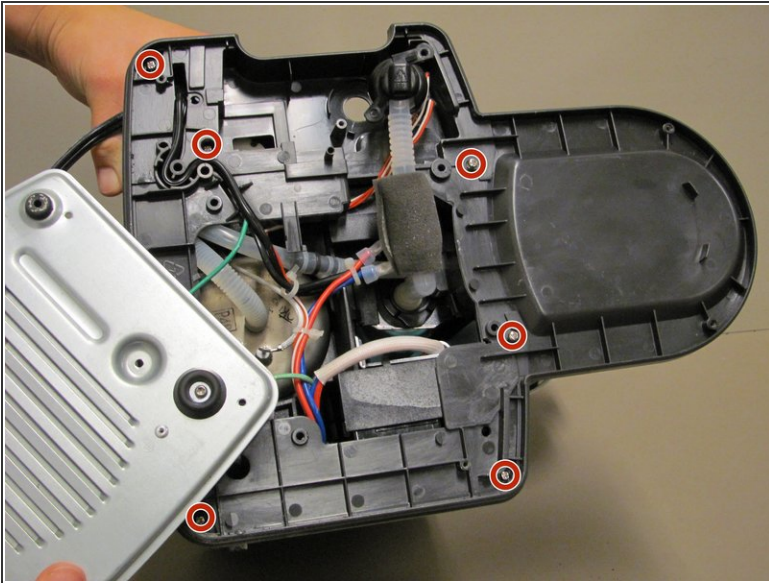
## Step 2 — Black Water Inlet



- Remove the two 14.5 Phillips screws.
- ⓘ Ensure that only the water inlet valve can be moved.

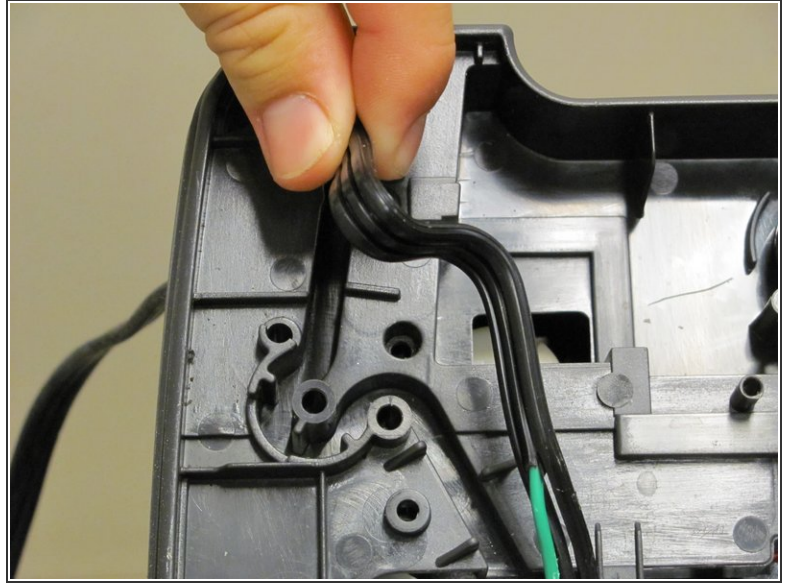
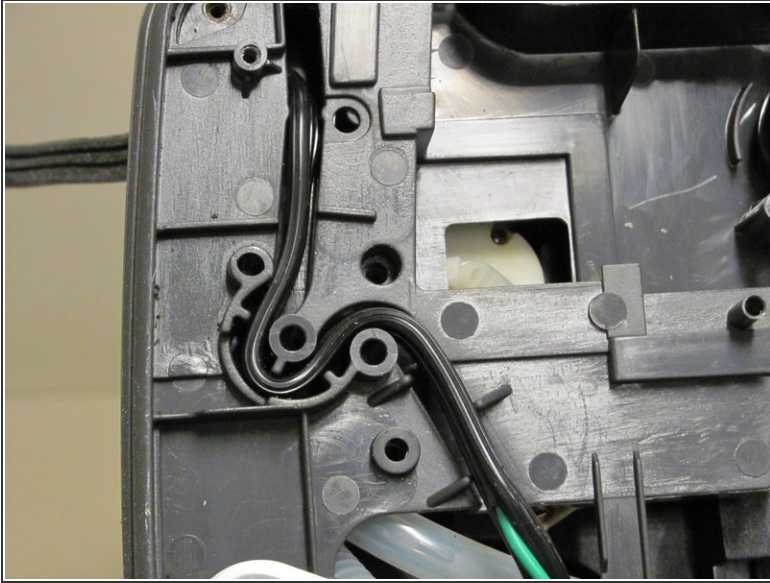


## Step 3 — Bottom Cover #2



- Use a Phillips #0 screwdriver to remove the following six screws:
  - Six 14.5mm Phillips screws.

## Step 4 — Power Cord



- Remove the power cord from the groove. (the black cord that leads into the green wire.)

ⓘ This creates more slack in the wire to give you more room to work with.

⚠ DO NOT remove green wire from the cover its attached to.

To reassemble your device, follow these instructions in reverse order.