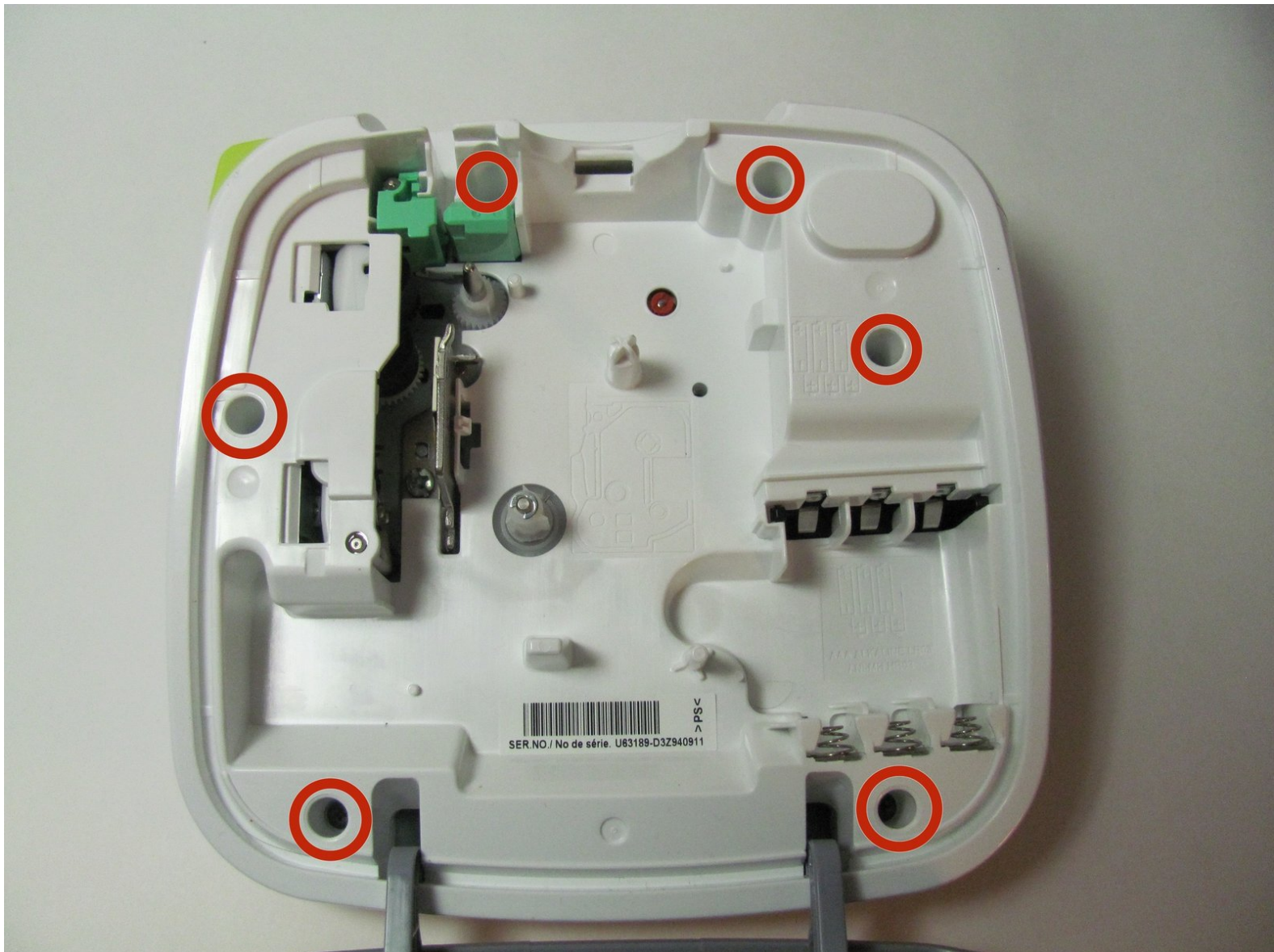




# Disassembling Brother PT-D200 Back of Device

This guide will show you how to open up and disassemble your Brother PT-D200.

Written By: [deleted]





## TOOLS:

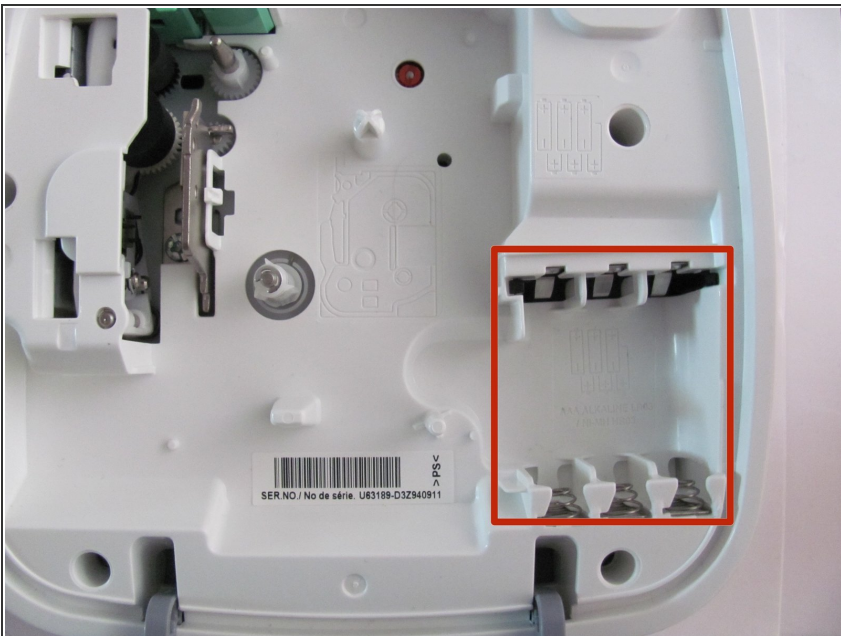
- [64 Bit Driver Kit](#) (1)
-

## Step 1 — Battery



- Flip the device over and press down on the indication arrows located at the top center of the back cover and pull it open.

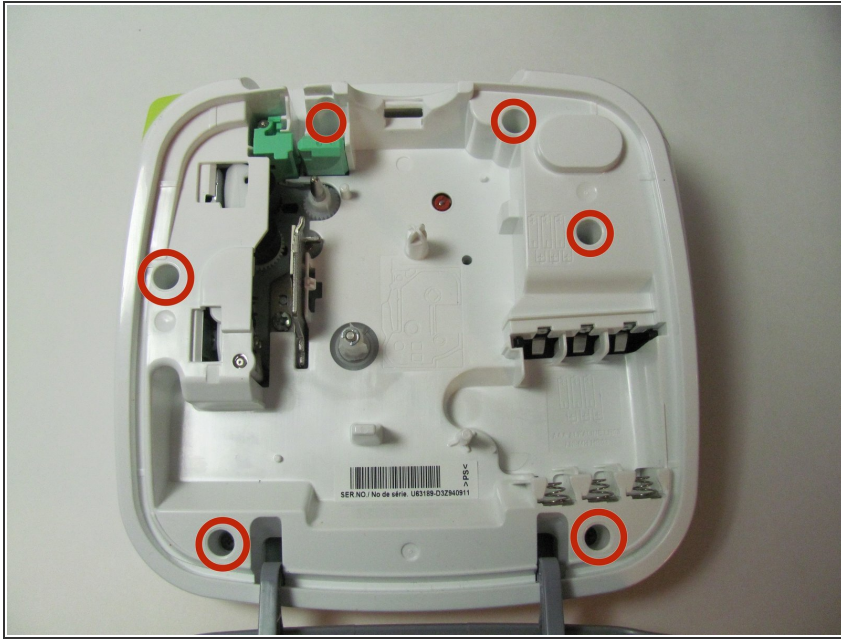
## Step 2



- Remove the six AAA batteries.



### Step 3 — Back of Device



- Use the Helping Hand 1/4" screwdriver to unscrew the six 3/16" corner screws.

### Step 4



- Close the back cover and then flip the device over and separate the top half from the bottom half as shown.
- ⚠ Be gentle when lifting the top of the device, there is a ribbon cable attaching the two halves together.

To reassemble your device, follow these instructions in reverse order.