



# Disassembling Canon EOS Rebel XS Battery Door

Use this guide to repair a broken battery door.

Written By: Daniel Bussone



## INTRODUCTION

Use this guide to repair a broken battery door. The battery door on this model tends to break off due to a weak plastic hinge.



### TOOLS:

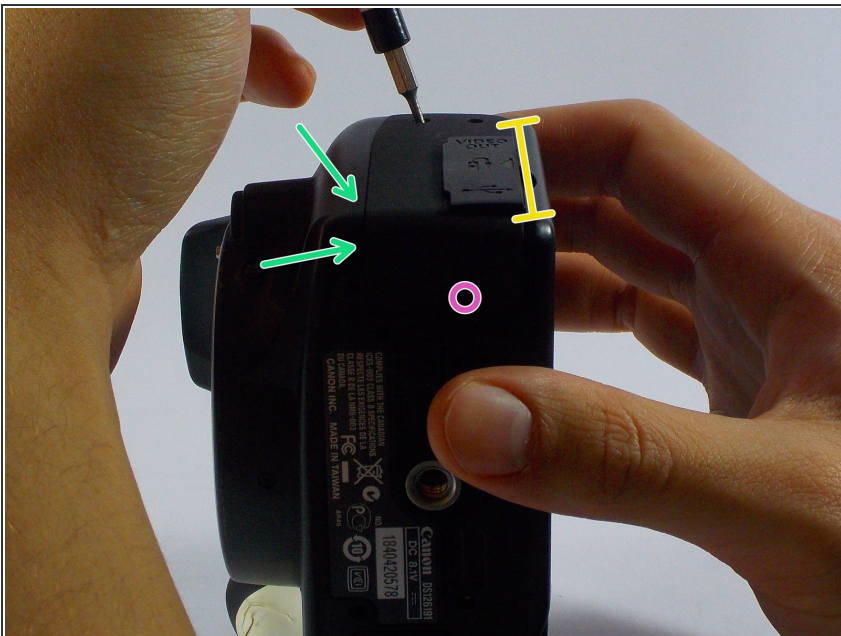
- [Phillips #00 Screwdriver](#) (1)
  - [Spudger](#) (1)
-

## Step 1 — Latch Side Cover



- Remove the two 3mm (1/8") black screws from the side cover using a #00 Phillips screwdriver.

## Step 2



- On the bottom, remove the 6mm (13/64") screw with the #00 Phillips Screwdriver.
- Pry up the panel; starting from the front/bottom corner, as indicated.
- There's a concealed lip, under the opposite edge.

### Step 3 — Disassembling Canon EOS Rebel XS Front Cover



- Remove three medium length screws from the bottom of the camera

### Step 4



- Remove the two medium length screws on the front panel of the camera above the lens mount.
- Once you done, you may use the Spudger to panel from non-grip side.
- ⓘ If you start on the grip side, it will be more challenging to loosen the panel.



## Step 5 — Grip



- Remove the two 4.5mm (.18in) long black screws from the camera grip using a #00 Phillips screwdriver.

## Step 6



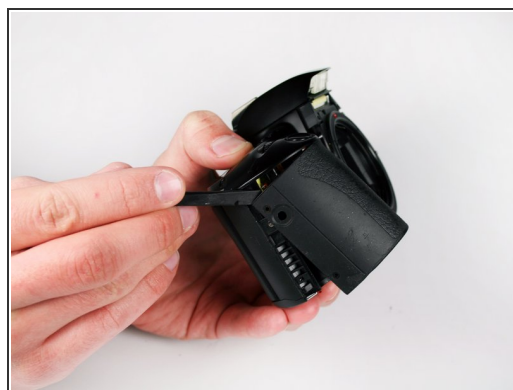
- Use your fingertip to pry off the external shutter port cover.

## Step 7



- Remove the two 5mm (.20in) long silver screws securing the grip to the camera using a #00 Phillips screwdriver.

## Step 8



- Use the spudger tool to carefully pry the grip from the rest of the camera.

## Step 9



- Once the grip is loose, use your fingers to remove it from the camera.

## Step 10 — Battery Door



- Remove the 4.8mm (.19in) long silver screw from the inside of the grip.

## Step 11



- Remove the hinge of the battery door from the inside of the grip.
- ⓘ Our sample camera's battery door was broken off of its hinge. Picture two shows an example of a battery door that is not broken.

To reassemble your device, follow these instructions in reverse order.