



Disassembling Canon PowerShot SD700 Lens

This is a guide to disassemble the lens of the Canon Powershot SD700 IS.

Written By: Aaron Lee



INTRODUCTION

This guide is used to disassemble the lens from the camera. This will be used to further clean the lens if you experience the E18 error.



TOOLS:

- [Phillips #00 Screwdriver](#) (1)
-

Step 1 — Outside Case



- Turn off camera by pressing power button above the LCD screen.
- Remove the battery and memory card.

Step 2



- Remove the screws on the bottom of the camera using a 00 Philip's head screw driver

Step 3



- Remove the screws on the right side of the camera.

Step 4



- Remove the screws on the left of the camera underneath the "A/V out Digital" cover flap.

Step 5



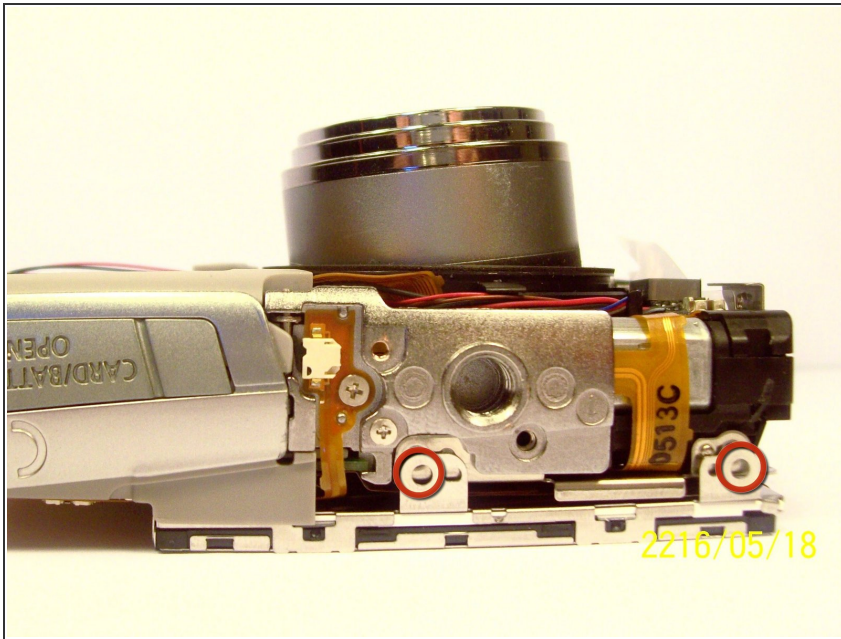
- Remove the screws on the bottom of the camera near the battery and the memory card slots.
- This screw is longer than the rest of the screws.

Step 6



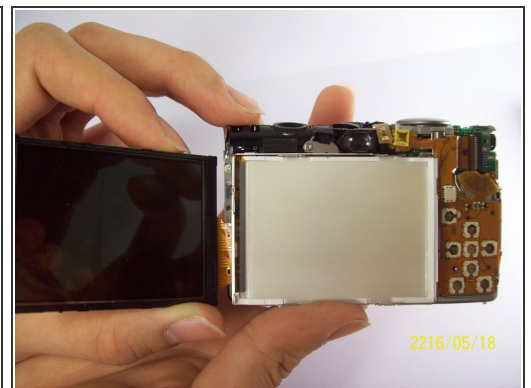
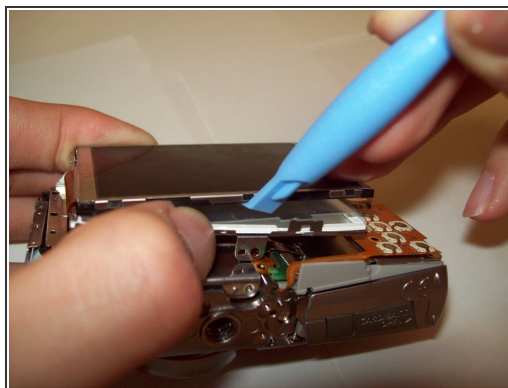
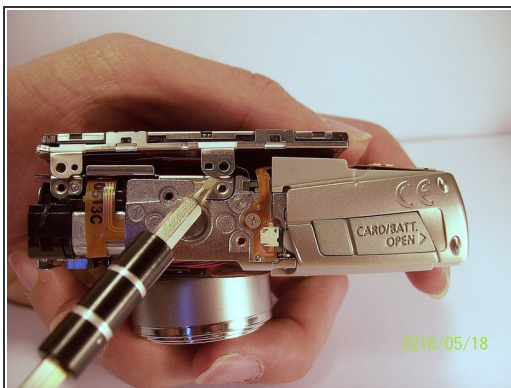
- Remove the front back and side casings from the camera.

Step 7 — LCD screen



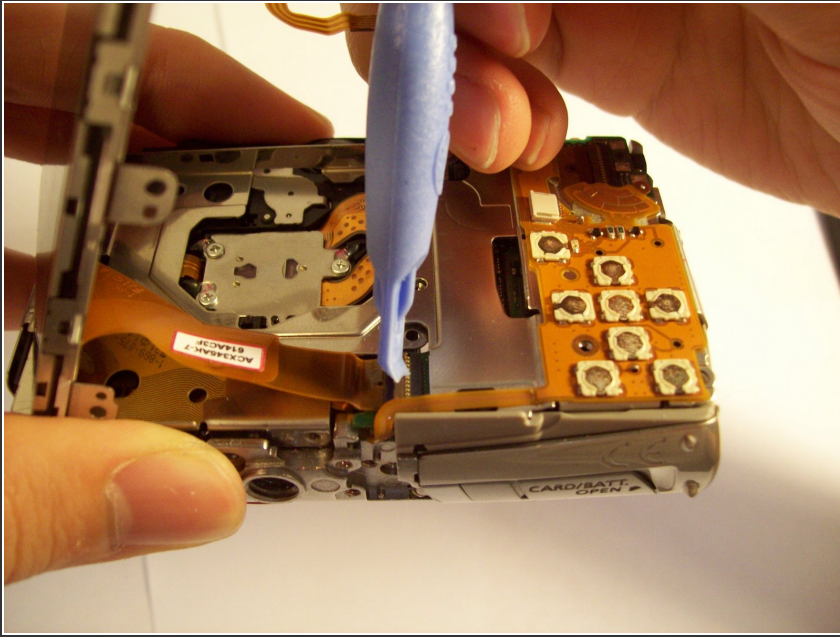
- Remove the two screws that connect the LCD and backlight to the main body of the camera.

Step 8



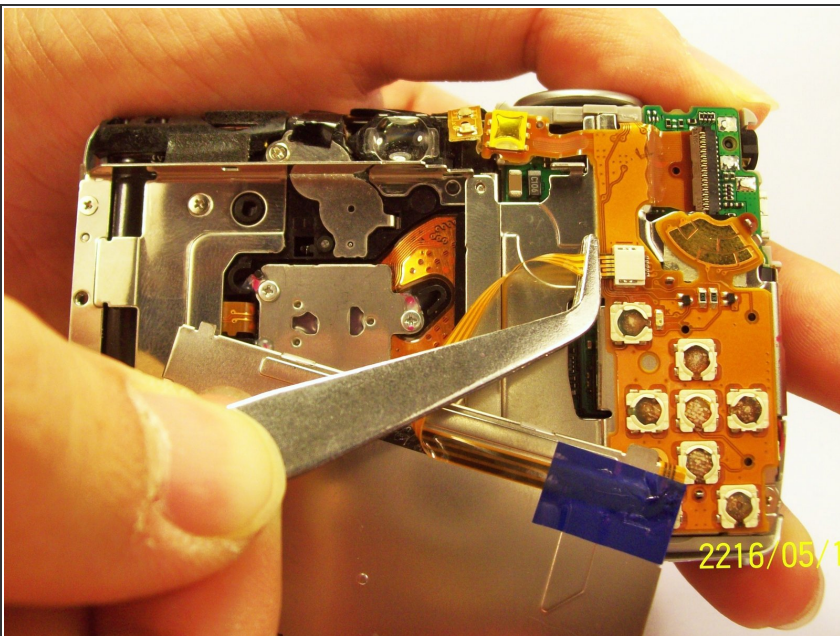
- Gently pry the LCD and the backlight from the main body of the camera.
- Gently pry the LCD from the backlight.
 - The thin ribbon cable is for the backlight.
 - The thick ribbon cable is for the LCD screen.

Step 9



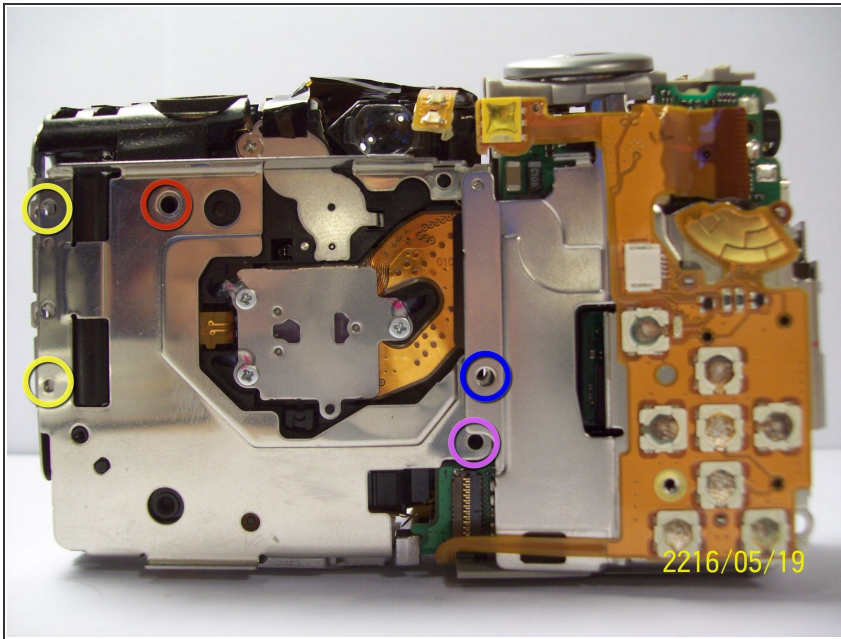
- Carefully lift the ZIF connector that covers the thick ribbon cable.
- This ZIF connector is fragile. Use caution when lifting it from its down position.
- Insert the new LCD and reassemble the camera.

Step 10 — Backlight



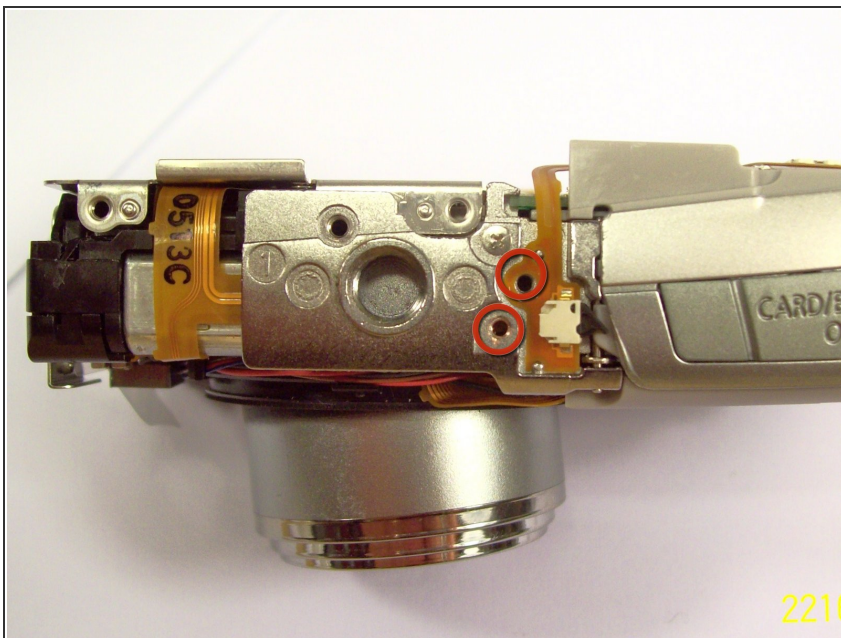
- Unplug the ribbon from the housing on the circuitry.
- Take the new ribbon and insert it into the housing.
- Tweezers or a tool with a sharp point can be used.

Step 11 — Motherboard



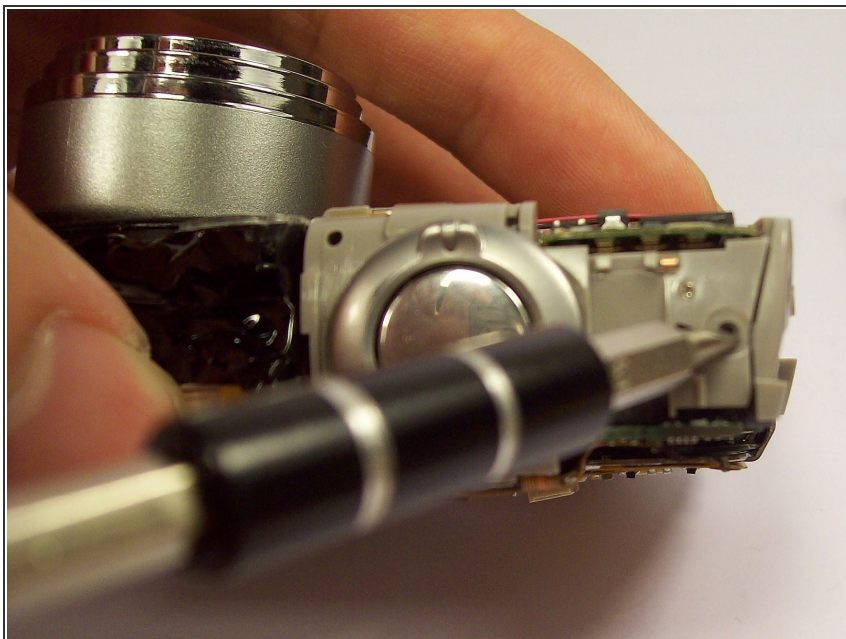
- Once the LCD and Backlight are detached, remove the larger screw marked in red in the picture as well as the four smaller sized screws marked in blue.

Step 12



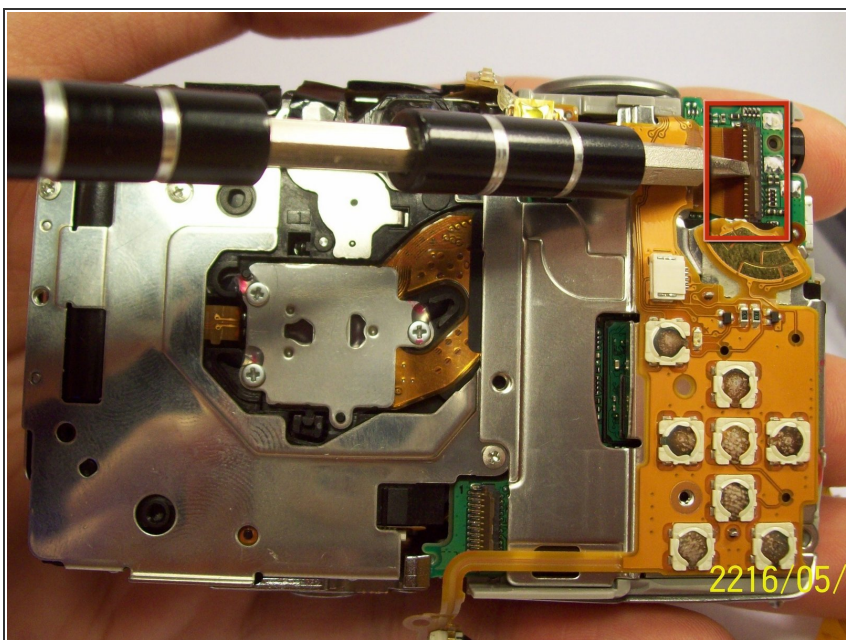
- Remove the two screws near the the tri-pod mount with a Philips head screw driver.

Step 13



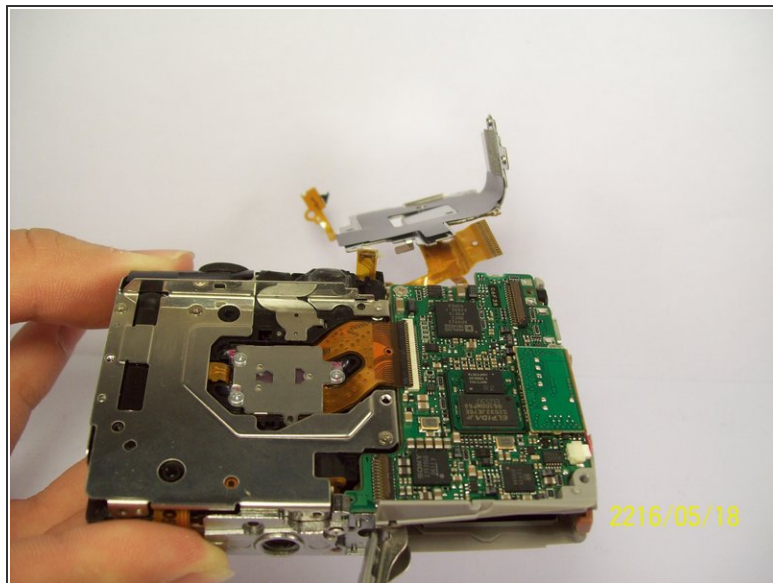
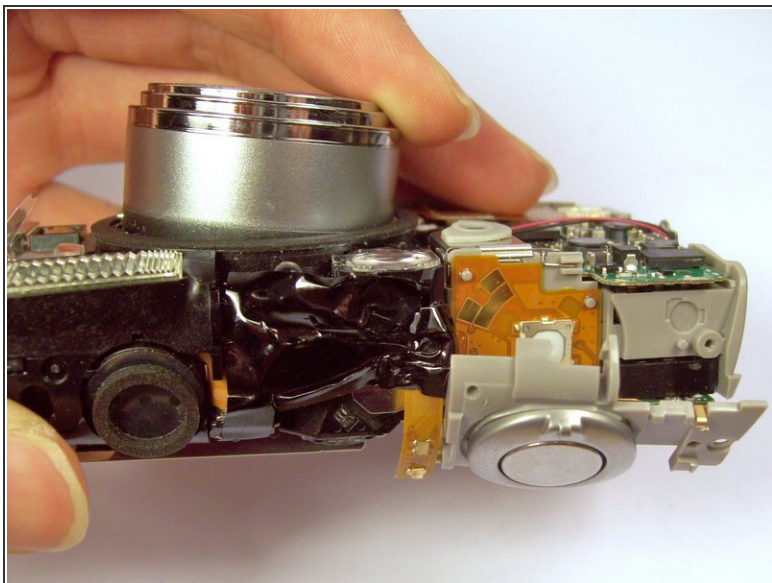
- Remove the screw next to the shutter with a Philip's head screw driver.

Step 14



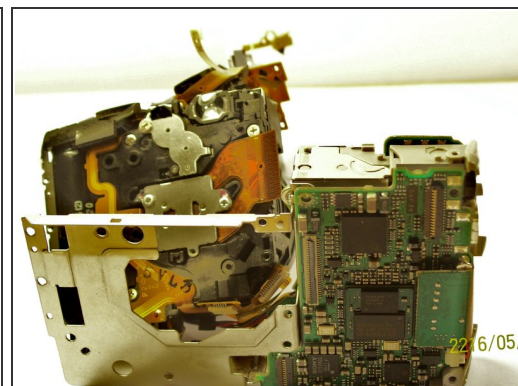
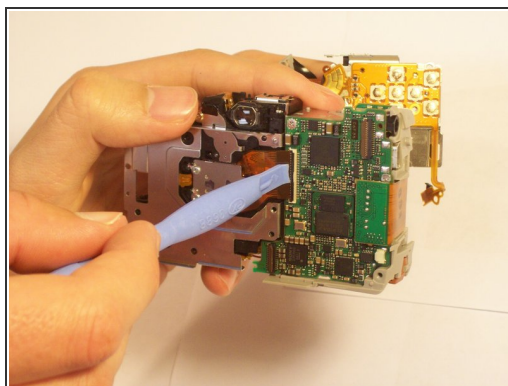
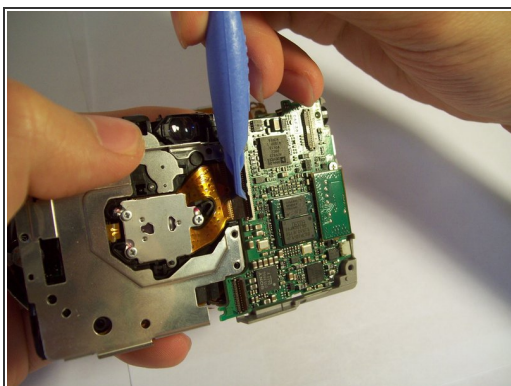
- Remove the orange ribbon cable by lifting the ZIF connector attached to the ribbon with a flat head screw driver or spudger.

Step 15



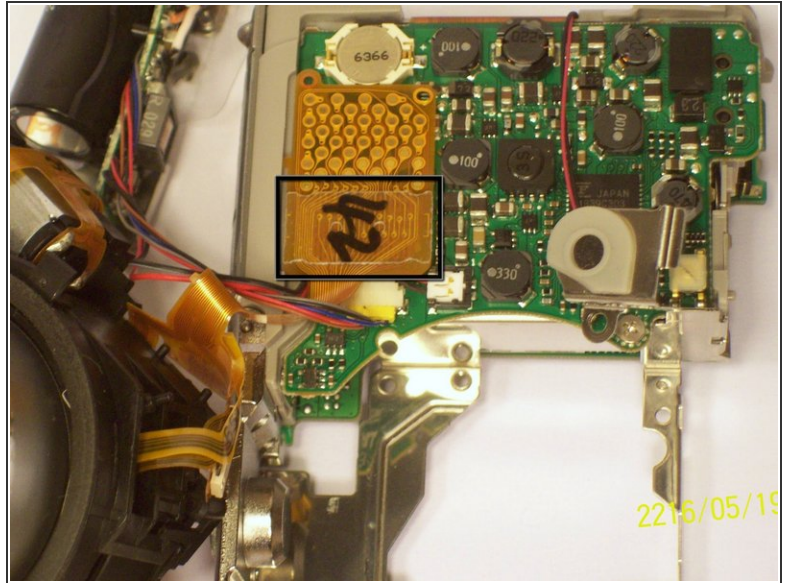
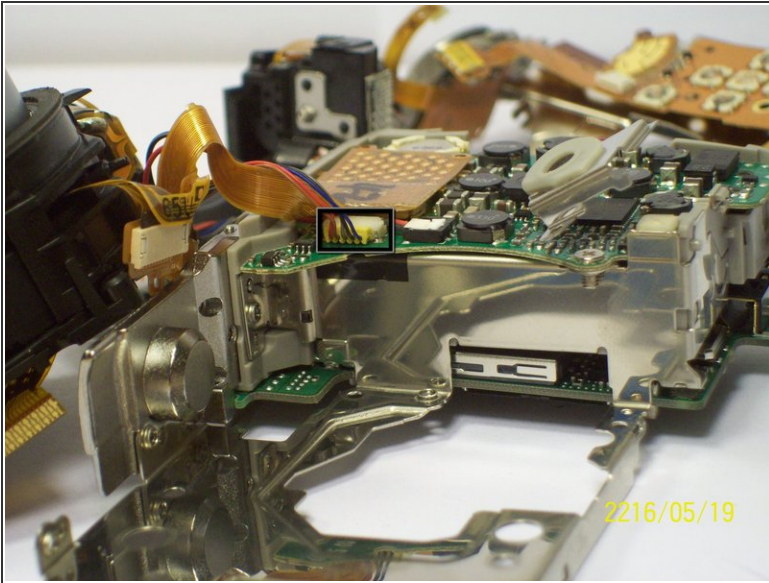
- Carefully lift the shutter along with the ribbon connected to it. This will remove the casing around the motherboard.

Step 16



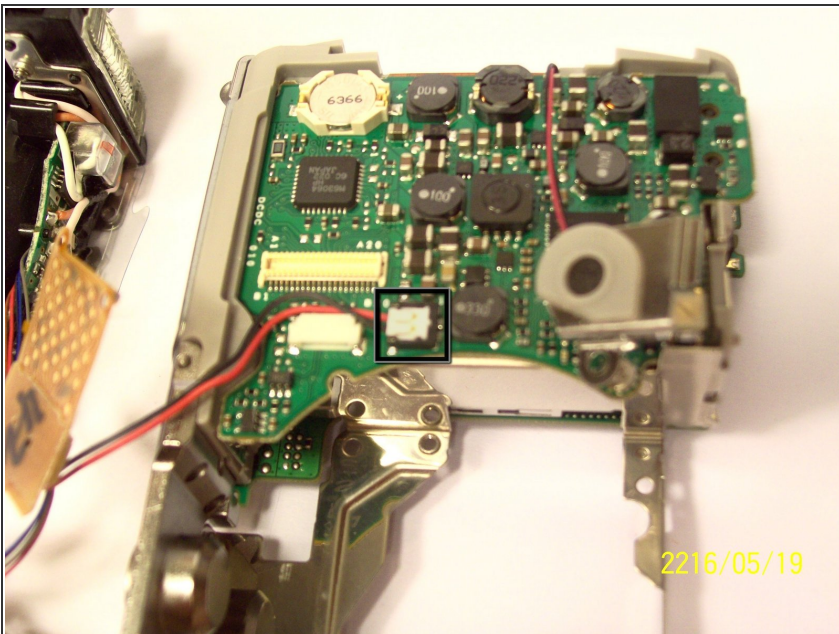
- With the motherboard casing detached, remove the short orange ribbon by lifting the ZIF connector with a spudger or other plastic opening tools and slide the ribbon out. Detaching this ribbon will disconnect the side of the camera containing the motherboard from the rest of the camera.

Step 17



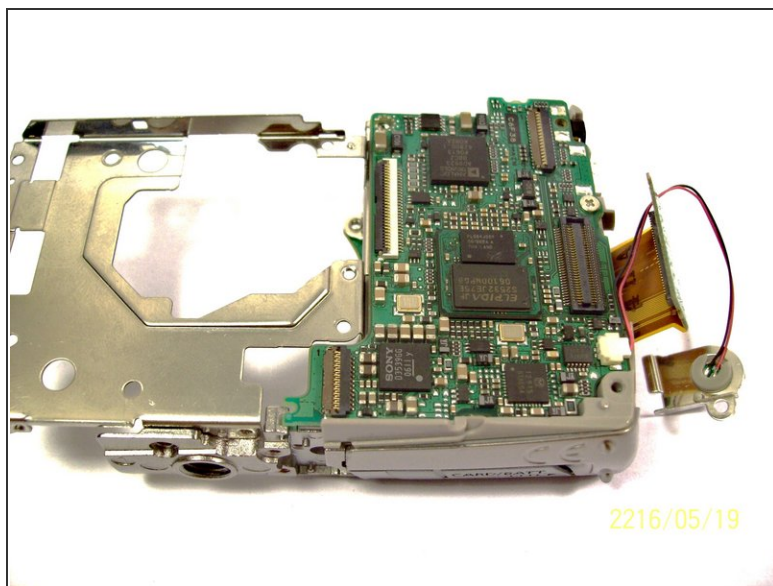
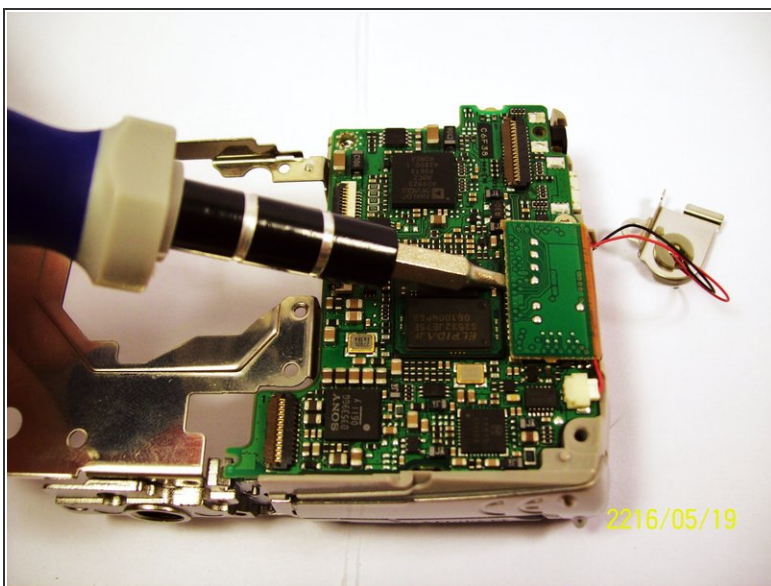
- First remove the wires that are attached to the motherboard, as shown by the black box. You can detach them by simply pulling them out.
- Next you can remove the film by lifting it gently from the motherboard.

Step 18



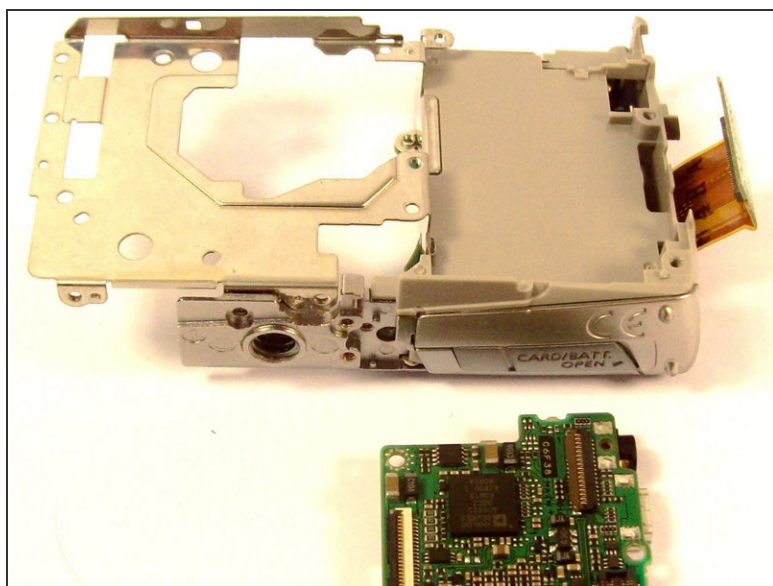
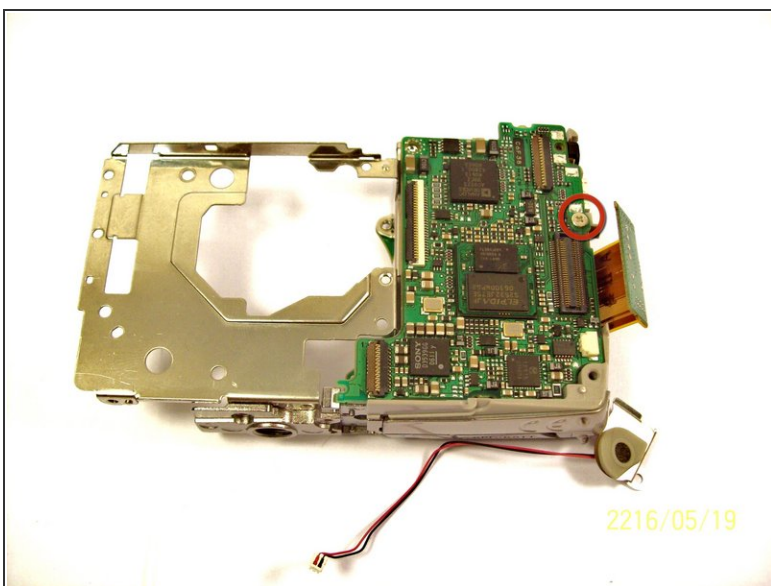
- Remove the last wires connected to the motherboard. You can remove it by gently lifting it upwards.

Step 19



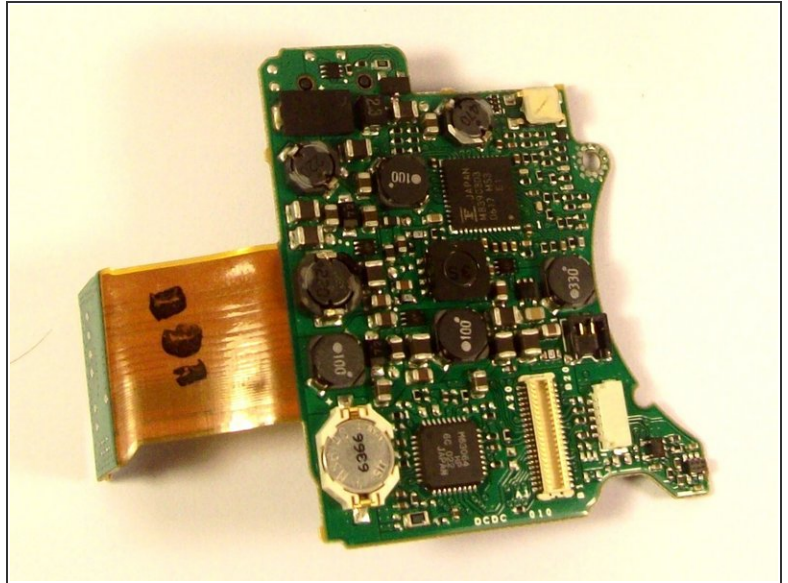
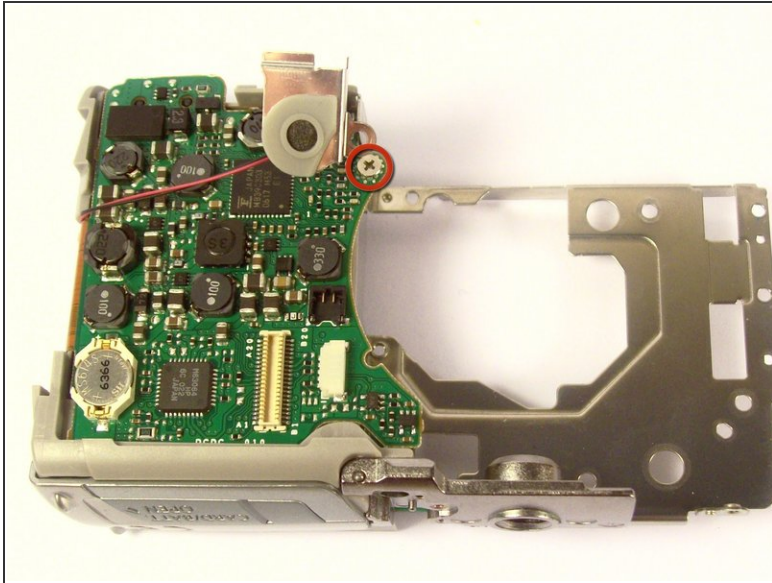
- Place a flathead screwdriver and gently lift the circuit attached, as shown on the picture.

Step 20



- Remove the screw using a philip 00 screwdriver.
- Once the screw is removed, gently lift the motherboard away from the case.

Step 21



- Remove the screw as shown by the red circle.
- Once the screw is removed, you can remove the board.

Step 22 — Lens



- Once you have removed the lens from the main chassis, gently brush off any dirt, sand, or dust that may have accumulated in the crevices. Using a compressed air canister or a brush can help remove all the dirt.

To reassemble your device, follow these instructions in reverse order.