



# Disassembling Canon PowerShot SD800 IS Lens Assembly

Removing the lens.

Written By: Jeremy Rabaino



---

## INTRODUCTION

Instructions for separating the lens assembly from the frame.



### TOOLS:

- [Phillips #00 Screwdriver](#) (1)
  - [Spudger](#) (1)
-

## Step 1 — Back Cover



- Remove one 2.25mm screw on the bottom.

## Step 2



- Remove two 2.25mm screws on the right side looking from the front.



### Step 3



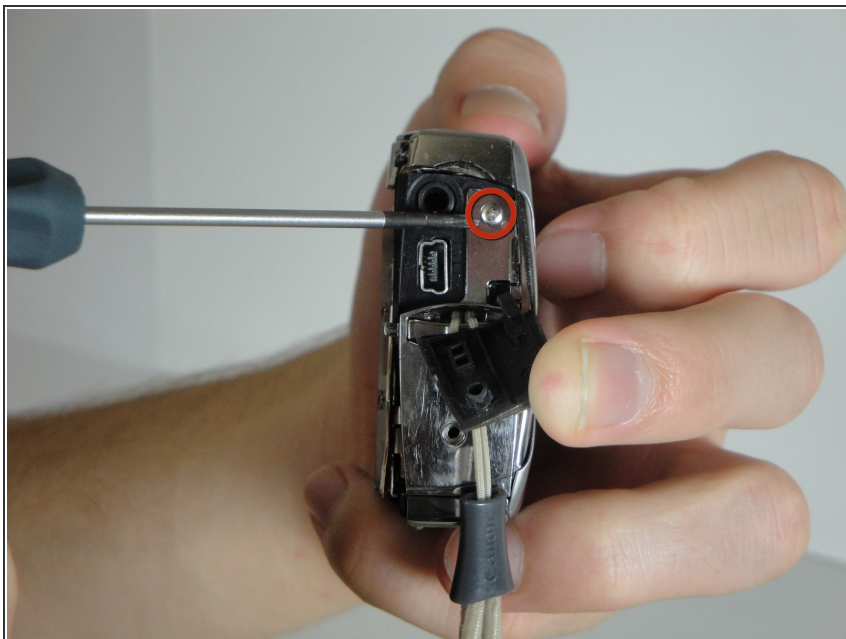
- Remove one 4.7mm screw on the side with the AV output.

### Step 4



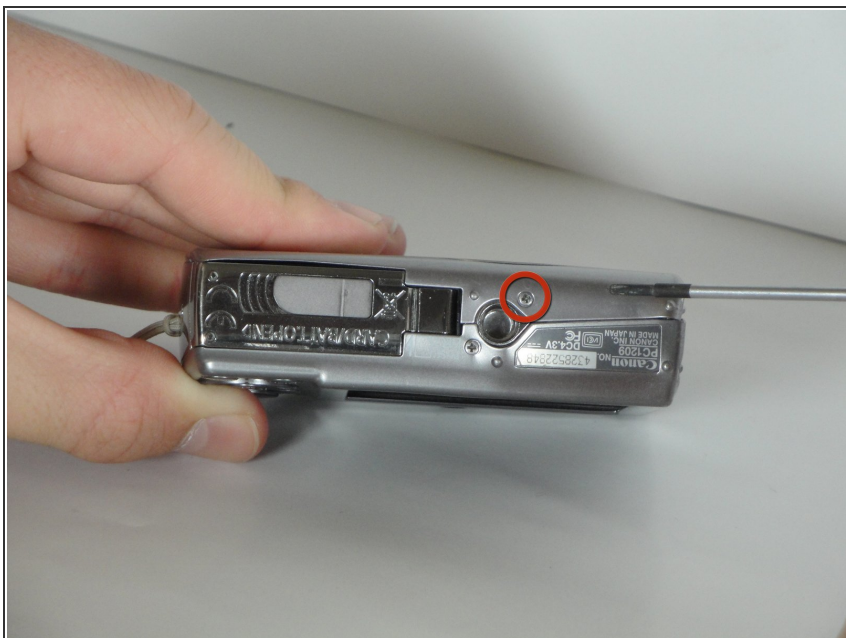
- Pull off the back cover.
- ⓘ The back cover tends to stick in the top corner (near the mode dial) due to a metal clip. Jiggle the cover side to side as you pull it out.

## Step 5 — Front Cover



- Remove the 3.9mm screw in the AV housing on the left side from the front of the camera.

## Step 6



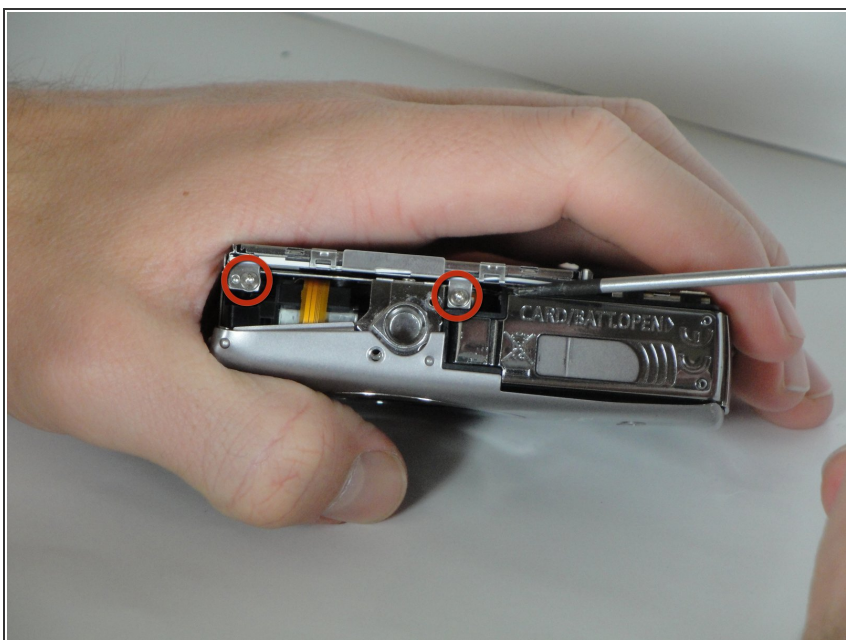
- Remove one 2.25mm screw on the bottom of the camera.

## Step 7



- Pull off the front cover.

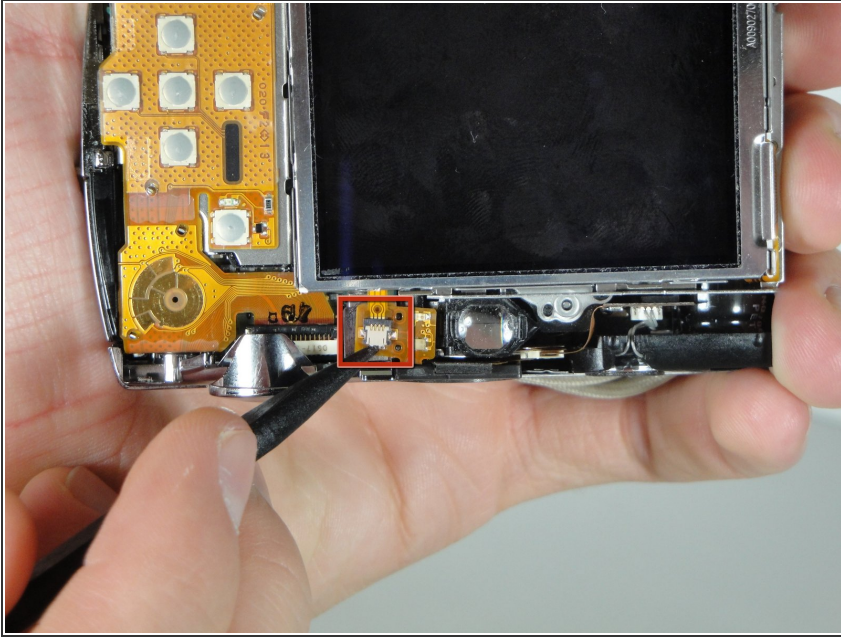
## Step 8 — LCD Assembly



- Remove 2 2.4mm screws on bottom.

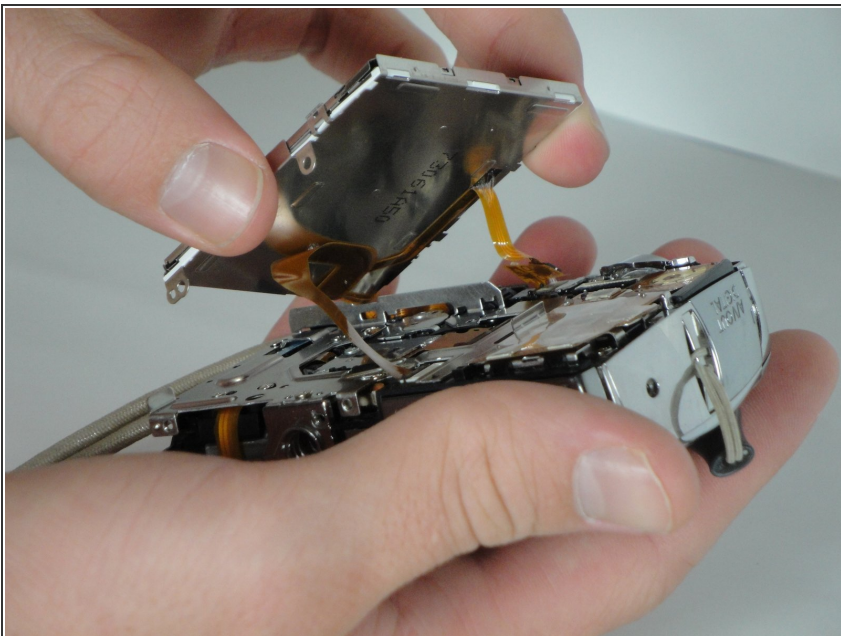


## Step 9



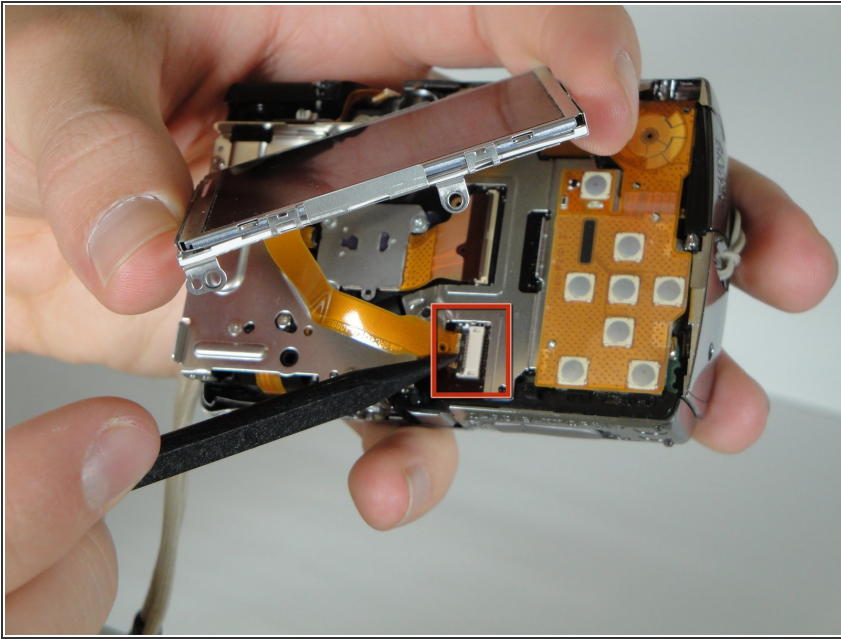
- Follow the small data cable to where it connects to the camera.
  - Lift the back white portion to unlock the cable.
  - The cable should easily slide out.
- ⚠ The connector is very fragile. Use caution when lifting the lock.

## Step 10



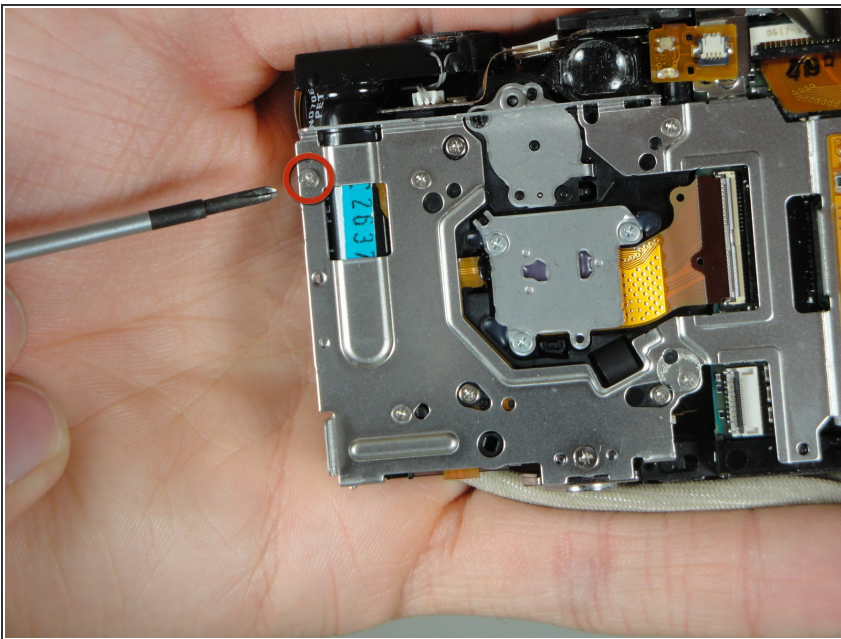
- Gently lift LCD display off.
- ⚠ There will be two data cables still attached to the camera. Do not break them.
- ⓘ There may be a loose strip of metal along the inner side of the LCD display for a secure fit.

## Step 11



- Follow the larger cable to where it connects to the camera.
  - Lift the front black portion of the connector to unlock the data cable.
  - The cable should easily slide out.
- ⚠ The connector is very fragile. Use caution when lifting the lock.

## Step 12 — Flash Assembly



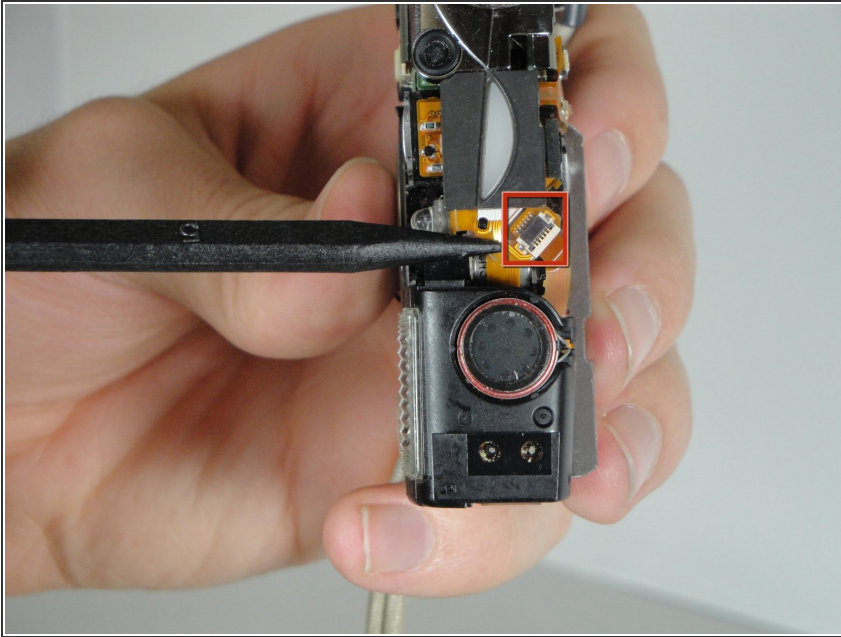
- Remove one 3.9mm screw from inner frame.



- **NEW: Steps 8–11 (Removing the LCD Assembly) are unnecessary and can be skipped!!!** Instead of the step shown here, you may access the Flash Assembly from the *side* of the camera—unscrewing it from the metal bracket that is attached to the inner frame. (The bracket will be clearly visible after removing the back and front covers—sorry, no photo!) Note that the Flash Assembly is also held to the bracket by 2 small posts along its

plastic body; after unscrewing, pull the assembly gently away from the bracket to unseat the posts.

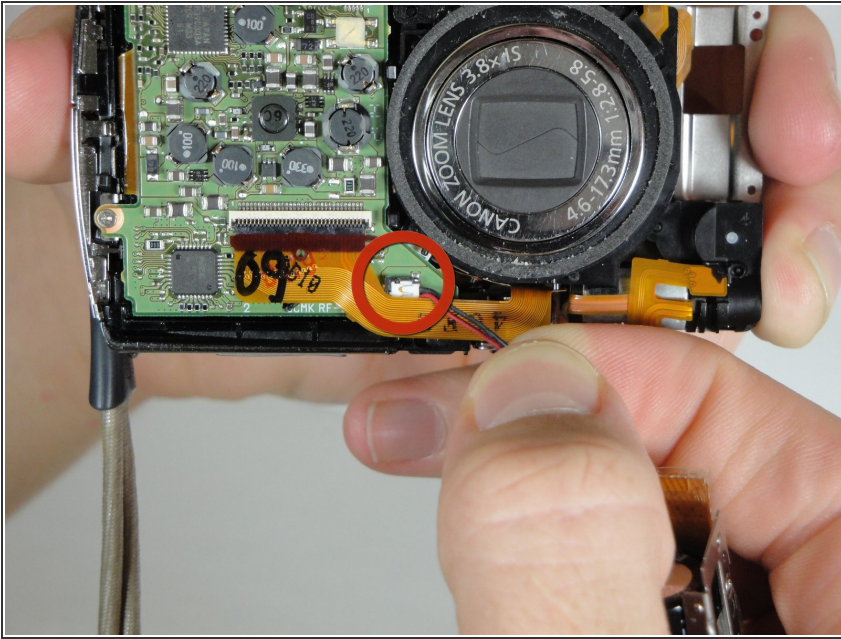
## Step 13



- Follow the data cable to where it connects to the camera.
- Lift up the back black portion to unlock the data cable.
- The cable should easily slide out.

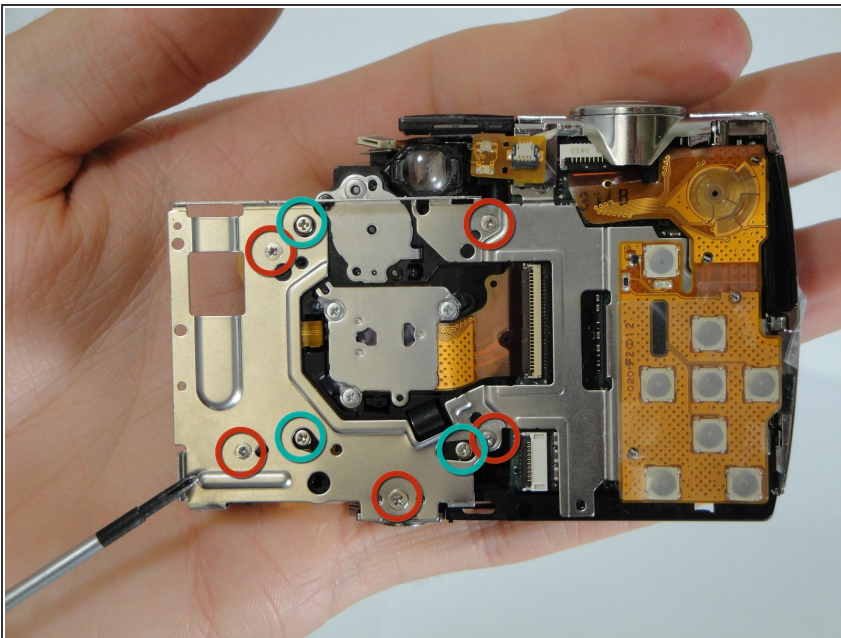
⚠ The connector is very fragile. Use caution when lifting the lock.

## Step 14



- Gently pull the red and black wires, lifting the white connector upwards, out of its position. (You may need to jiggle the wires from side to side somewhat to loosen the connector.)
- Now that all cables and screws are disconnected, you can now remove the flash assembly.
- ⓘ To reinsert, line up connector with the copper leads on the camera, and gently press the white piece into place.
- ★ The black cable should be closer to the top of the camera.

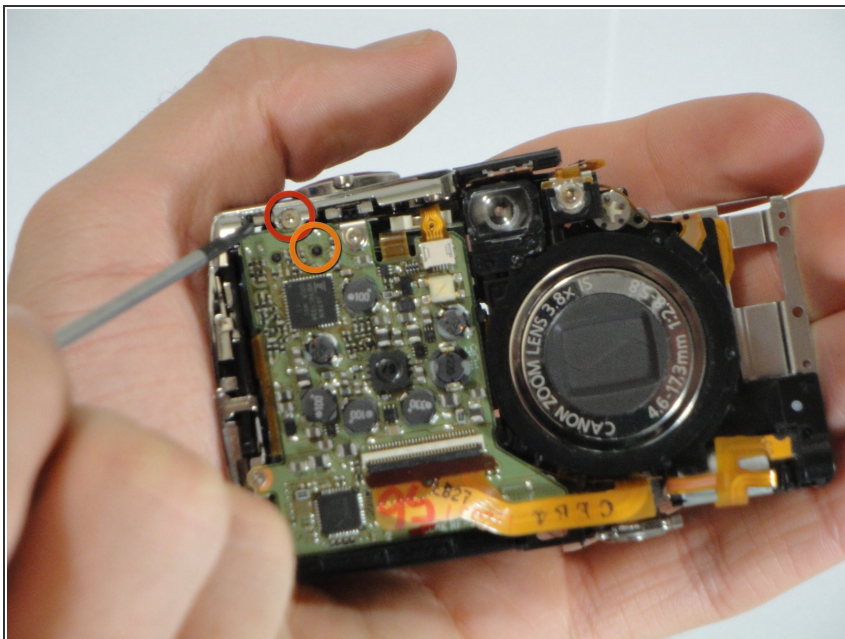
## Step 15 — Lens Assembly



- Remove 5 3.1mm screws.
- Remove 3 4.8mm screws.

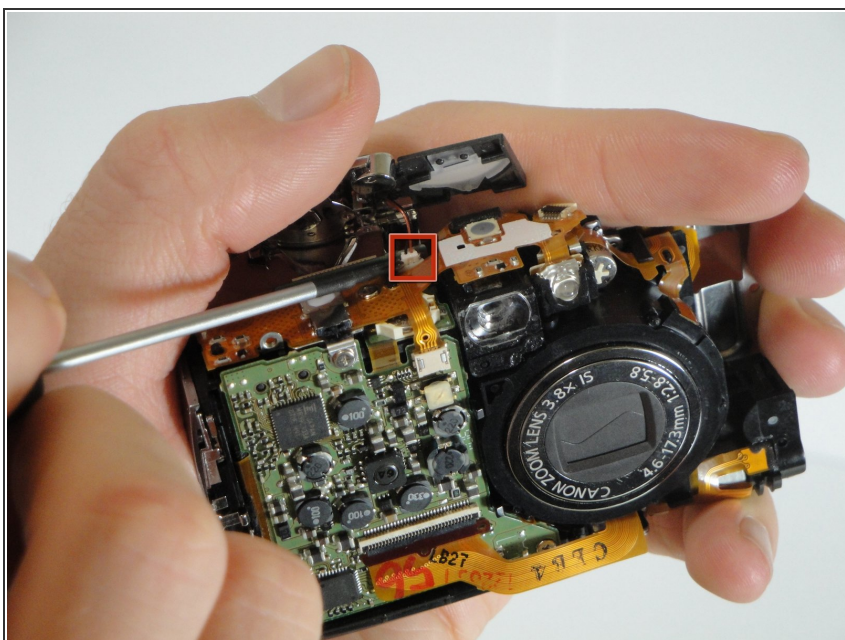


## Step 16



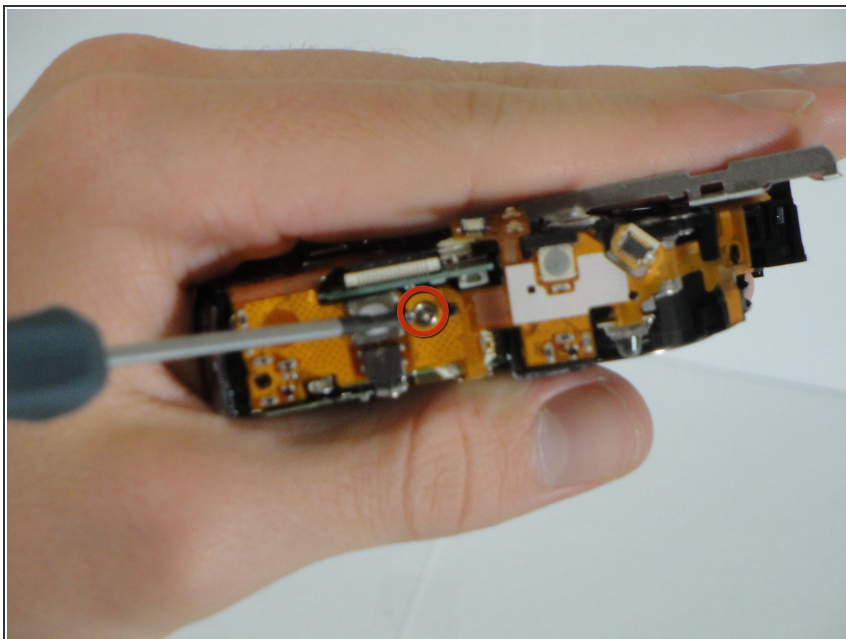
- Remove 1 3.0mm screw.
- Remove 1 4.3mm screw.

## Step 17



- Gently pull the red and black cables out.
- ⓘ The cables are attached to a white connector.

## Step 18



- Remove 1 3.8mm screw.

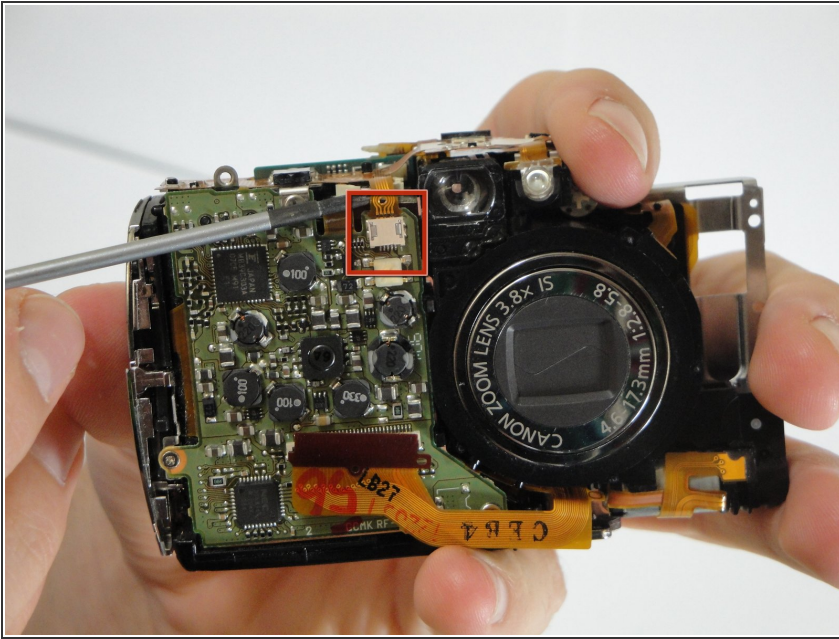
## Step 19



- Lift up the front black portion to unlock the data cable.
  - The cable should easily slide out.
- ⚠ The connector is very fragile. Use caution when lifting the lock.

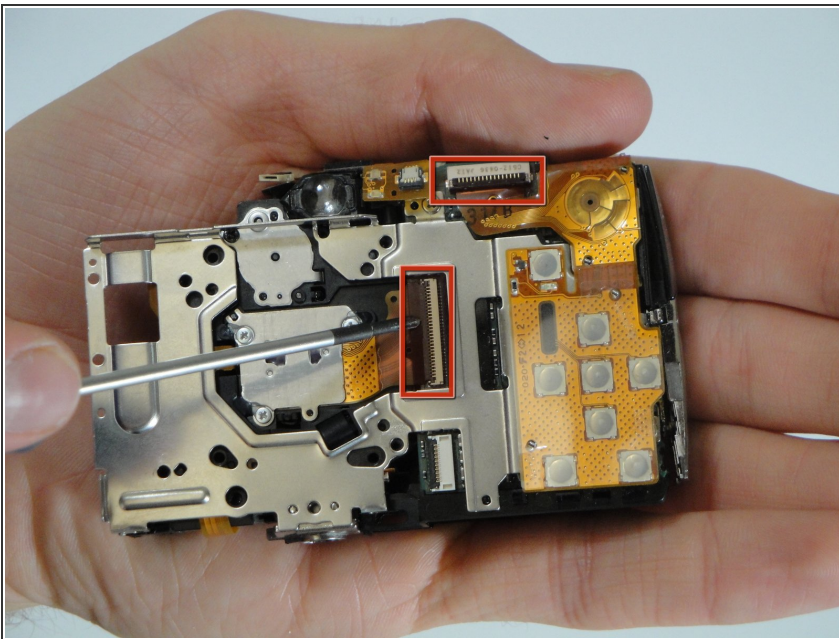


## Step 20



- Gently pull the cable straight out.
- ❗ This cable does not have a lock, unlike the others.

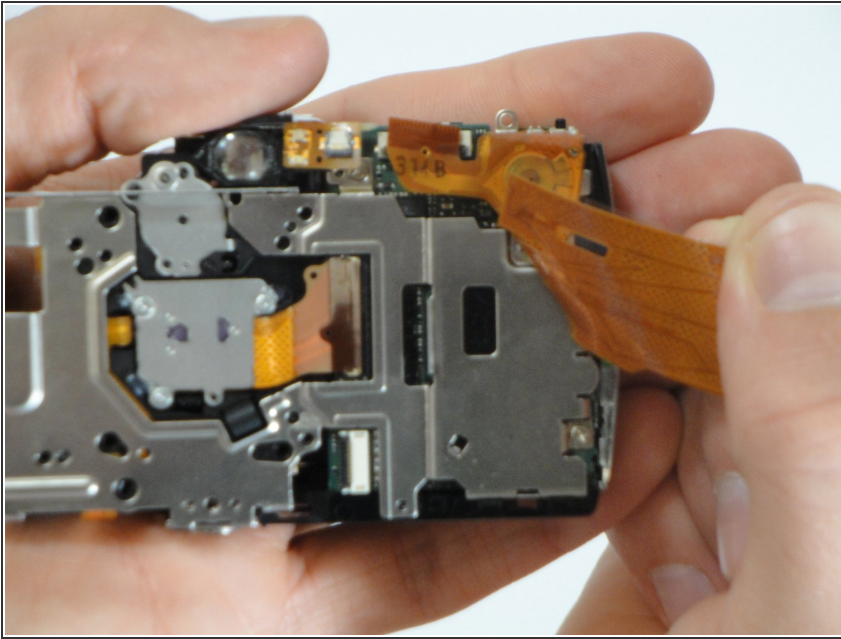
## Step 21



- Disconnect cables.

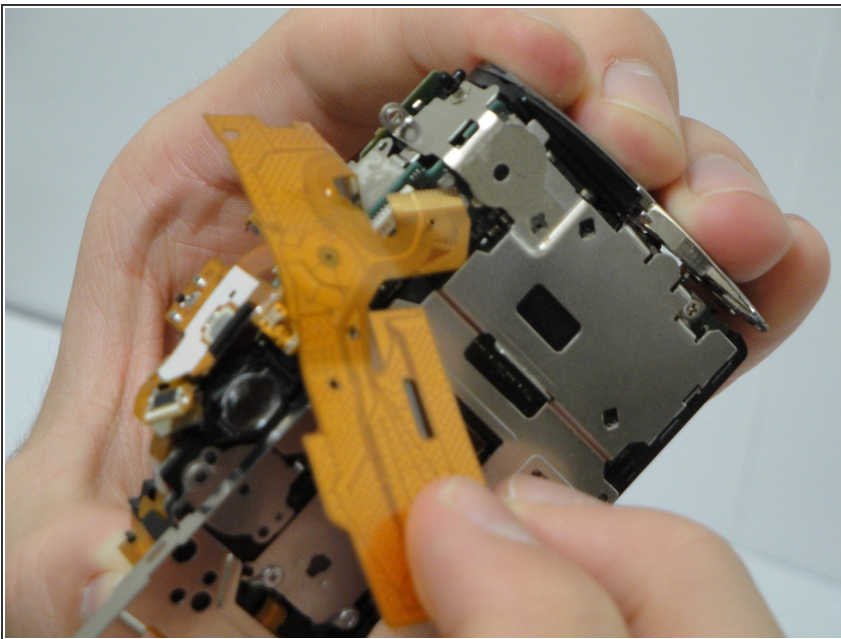


## Step 22



- Peel off the buttons on the back of the camera.
- ⓘ The button strip is attached by glue, so be gentle when pulling as not to rip the strip.

## Step 23



- Pull off the rest of the button strip.
- ⓘ The button strip is attached by glue, so be gentle when pulling as not to rip the strip.

To reassemble your device, follow these instructions in reverse order.