



Disassembling Canon Selphy CP910 Body

This guide will show you how to disassemble the body of the Canon Selphy CP910 to access the components within the printer.

Written By: Christie Peralta



INTRODUCTION

It may be necessary to open the Canon Selphy CP910 in order to replace the parts within the printer. For information regarding troubleshooting issues with the Canon Selphy CP910, go to [Canon Selphy CP910 Troubleshooting](#).

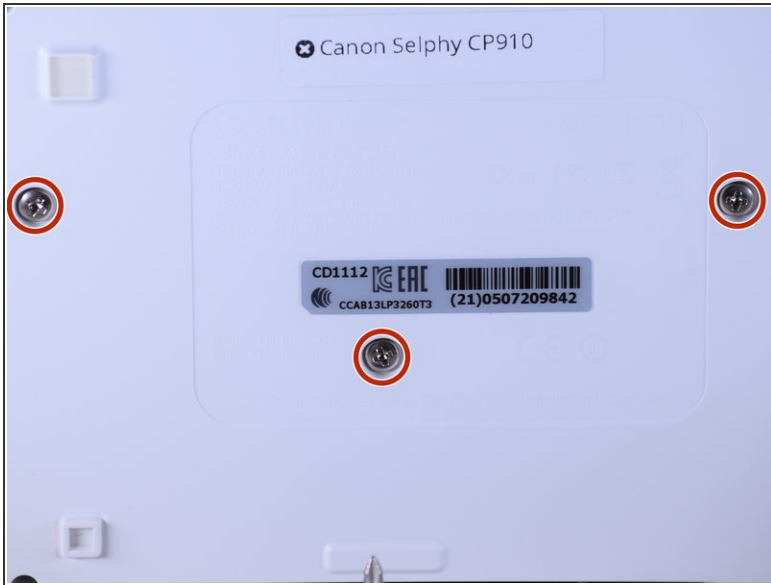
Remove any external components such as the paper cassette, [ink cartridge](#), and memory cards before disassembling the device.



TOOLS:

- [64 Bit Driver Kit](#) (1)
 - [Phillips #1 Screwdriver](#) (1)
-

Step 1 — Disassembling Canon Selphy CP910 Body



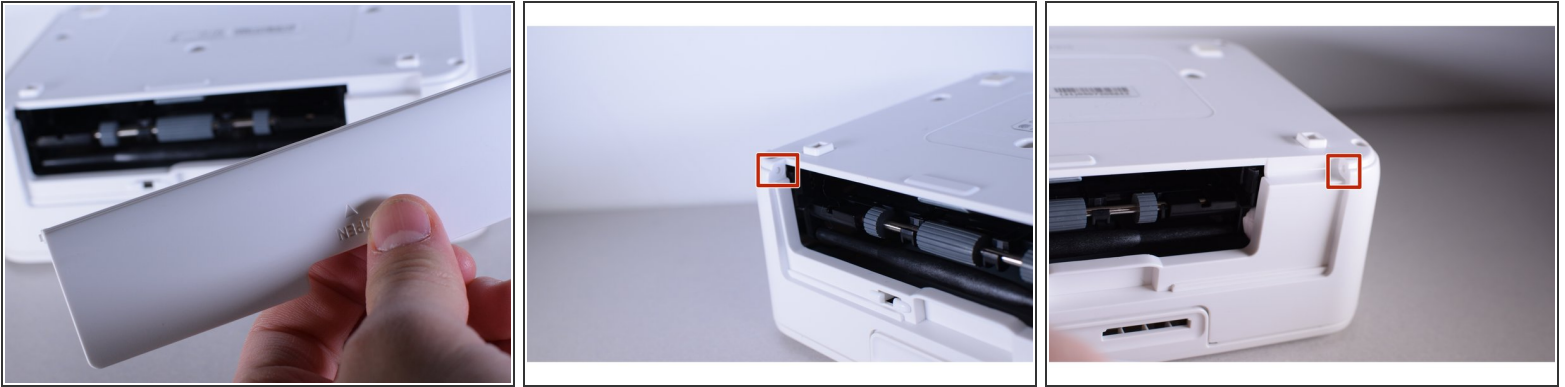
- Turn the printer over.
- Use the PH1 screw bit to remove the three 8 mm screws in the middle of the back plate.
- ☑ Keep track of these screws because you will need them to reassemble the printer.

Step 2



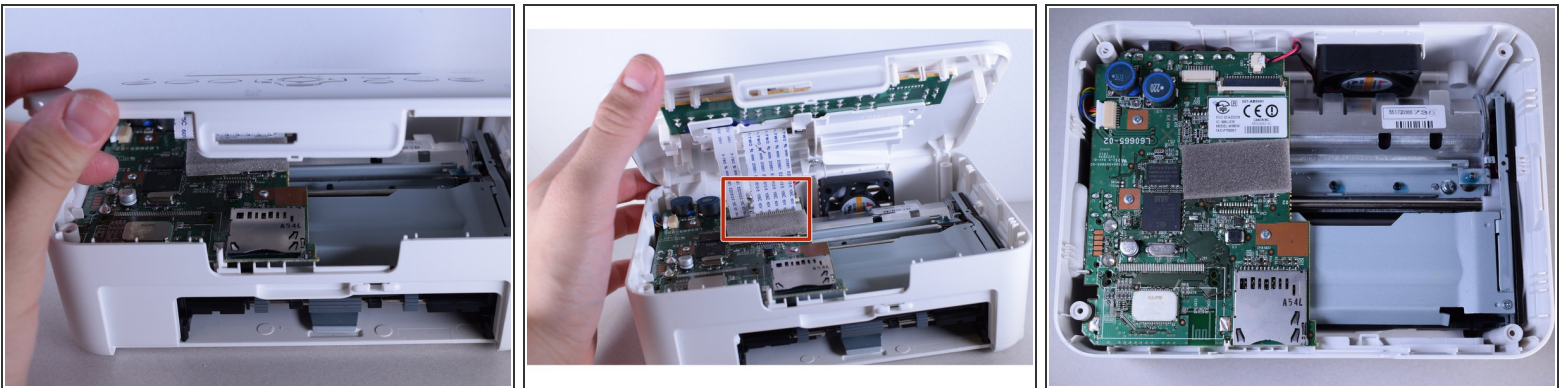
- Loosen up the four 10 mm corner screws.
- ⓘ A screwdriver with a long shaft approximately 7mm in diameter will make it easier to reach these screws.

Step 3



- Turn the device around and remove the "open" lid.
 - ❗ This lid needs to be removed in order to take the printer apart.
- Gently bend the lid and remove it from its hinges.

Step 4



- Turn the device back over and lift the top panel up.
- Disconnect the ribbon cables leading to the LCD screen.
- Pull the top panel off.

To reassemble your device, follow these instructions in reverse order.