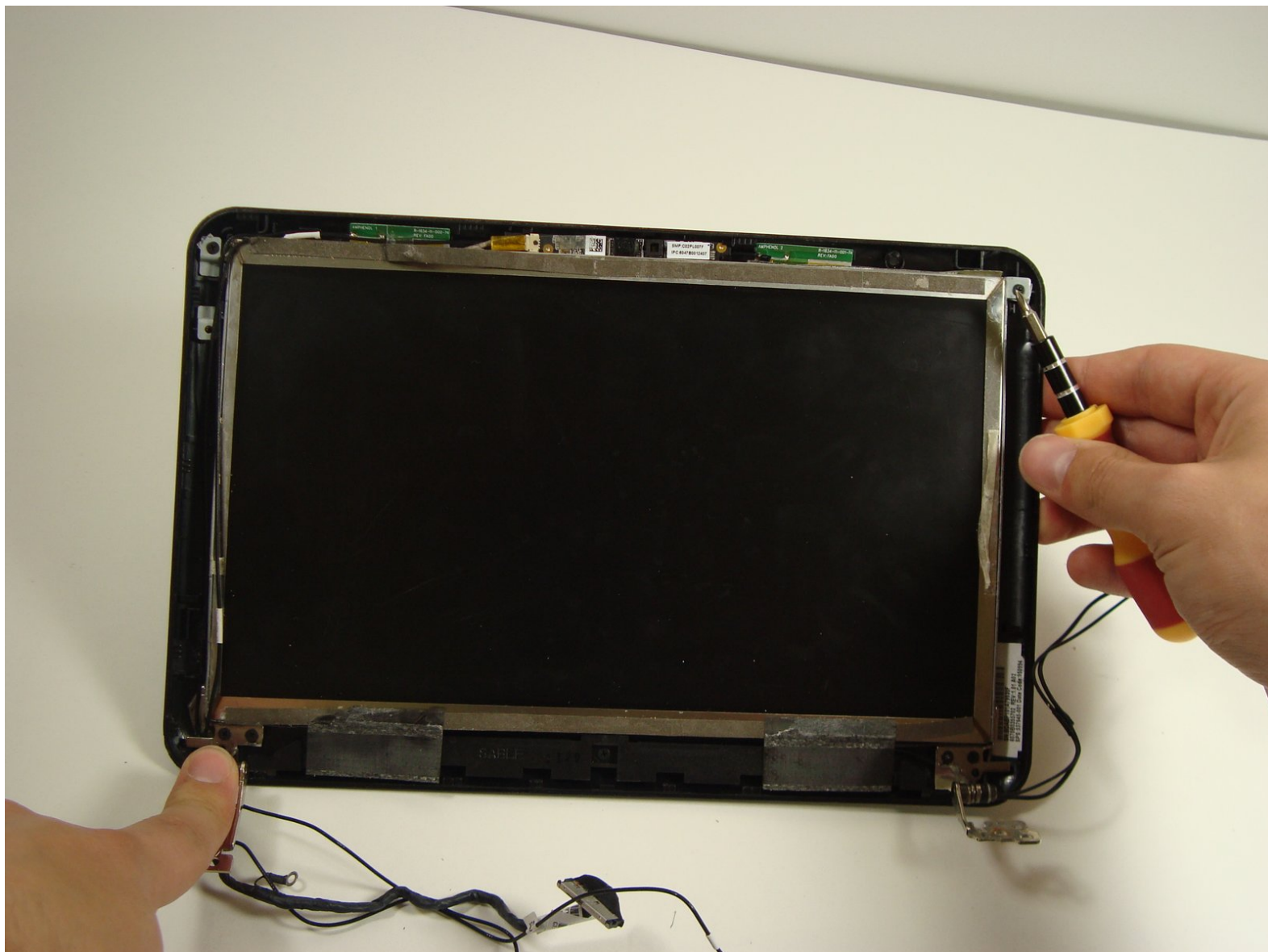




Disassembling Compaq Mini 110 Display Assembly

Removal of the display assembly

Written By: alea



INTRODUCTION

Before accessing the screen itself or the built in webcam, you must remove the display assembly from the base.



TOOLS:

- [Phillips #0 Screwdriver](#) (1)
-

Step 1 — Disassembling Compaq Mini 110 Battery



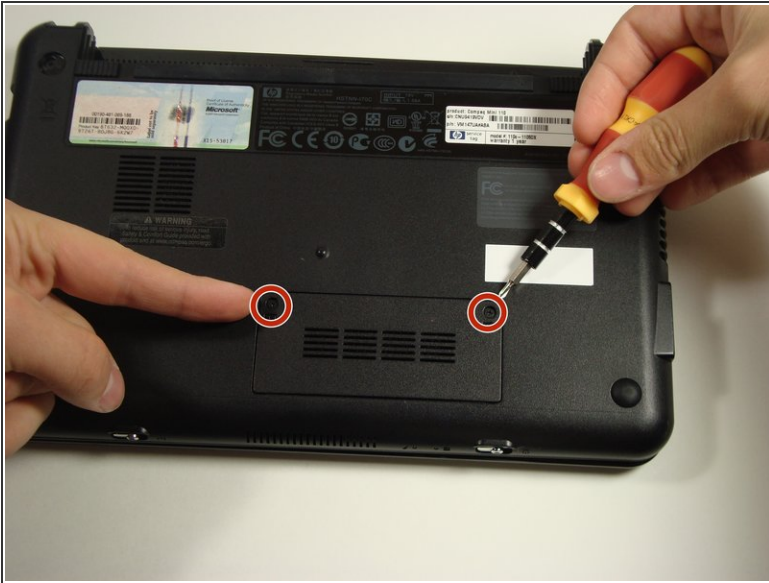
- Find the battery and the battery tabs located on the bottom of the Compaq Mini.

Step 2



- Push the tabs inward and slide the battery out.

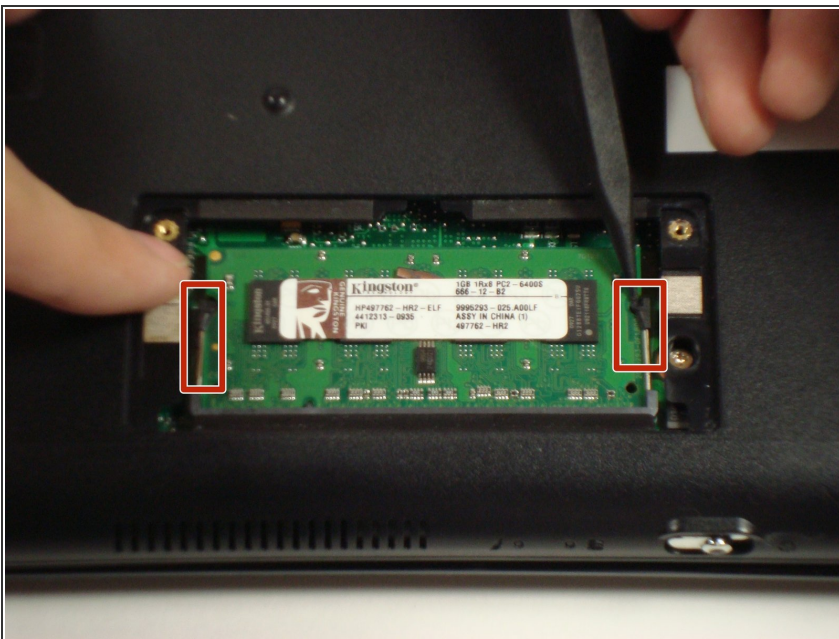
Step 3 — RAM



- Unscrew the two screws on the bottom of the laptop covering the memory compartment.

i The screws are attached to the panel.

Step 4



- Push out side tabs.

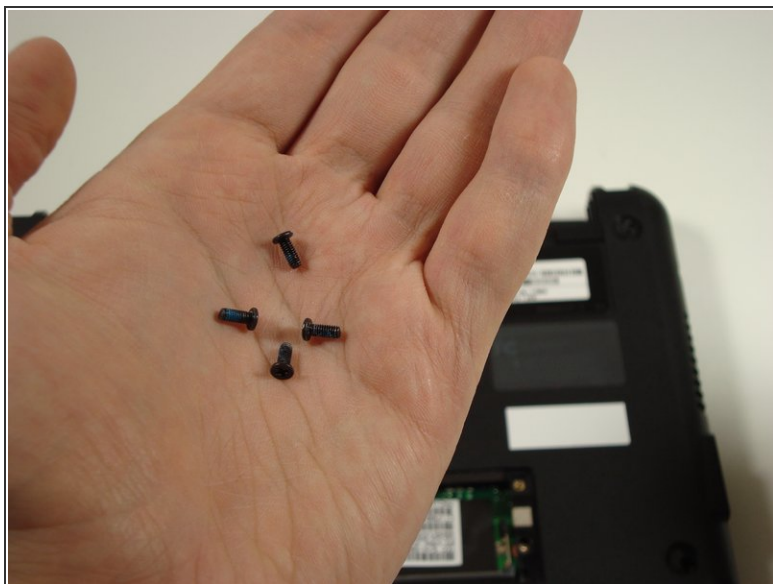
Step 5 — Keyboard



- Remove the rubber pads located on the corners of your Compaq Mini.

⚠ There may be junk underneath it. This is residue left from the glue that held on the rubber pad. Just scrape it away to find the screw.

Step 6



- Unscrew all the corner screws. There are four total, one under each rubber pad.

Step 7



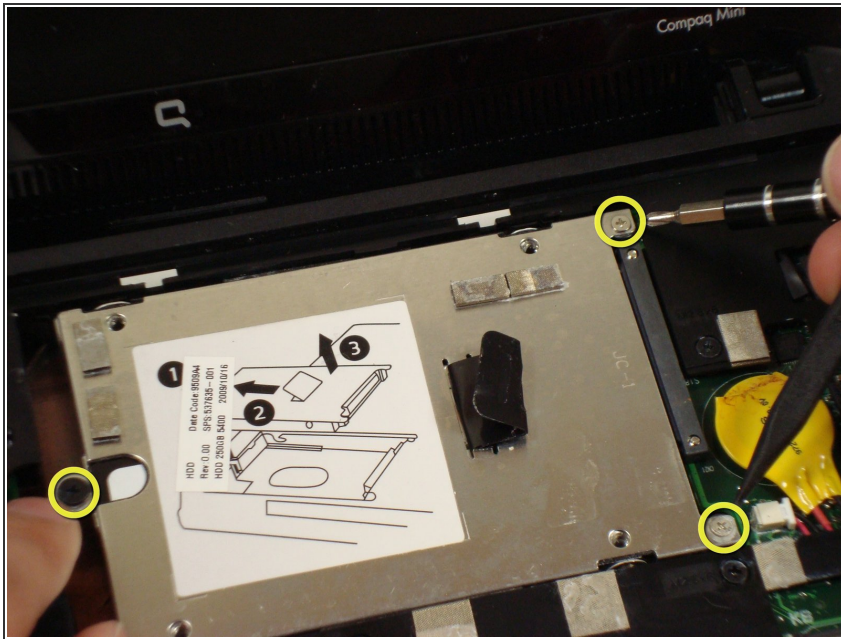
- Unscrew the screw for the bottom case located in the RAM compartment.

Step 8



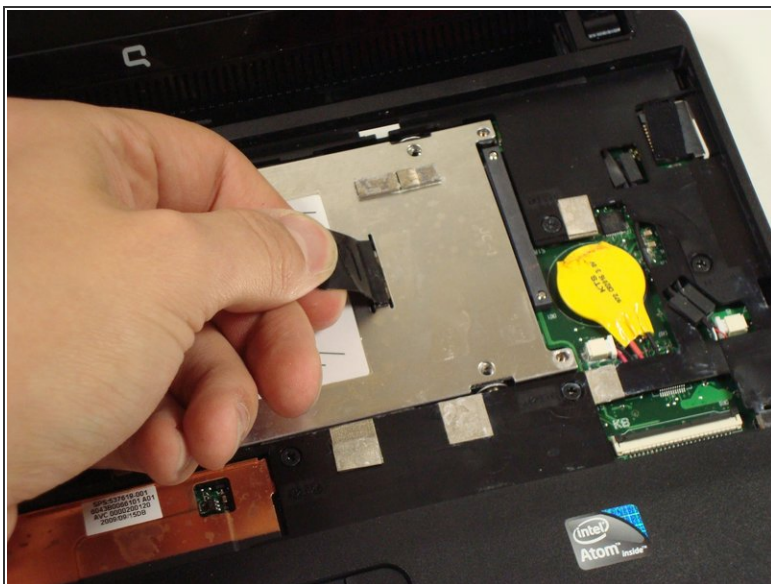
- Remove the three screws in the silver tabs at the back of the keyboard. The red circles show where they are located at the back of the base under the screen.

Step 9 — Hard Drive



- Remove the three screws.

Step 10



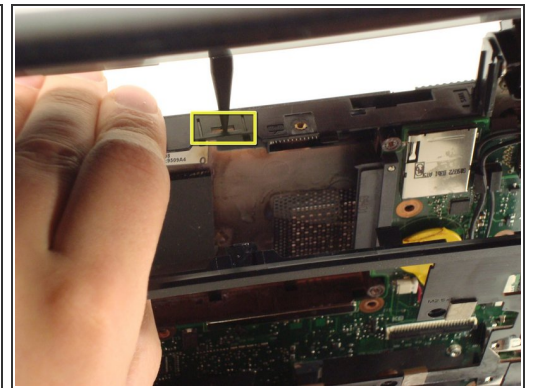
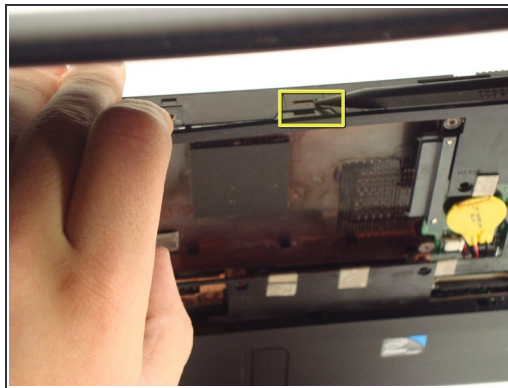
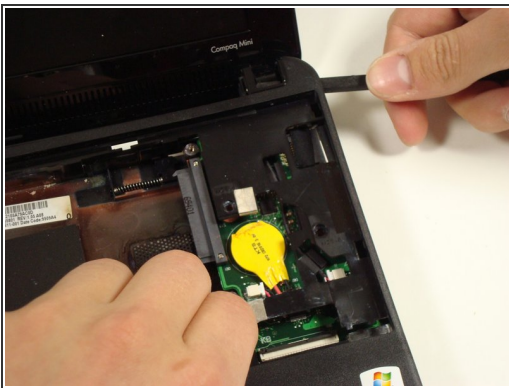
- Pull up on the tab.

Step 11 — Top Cover



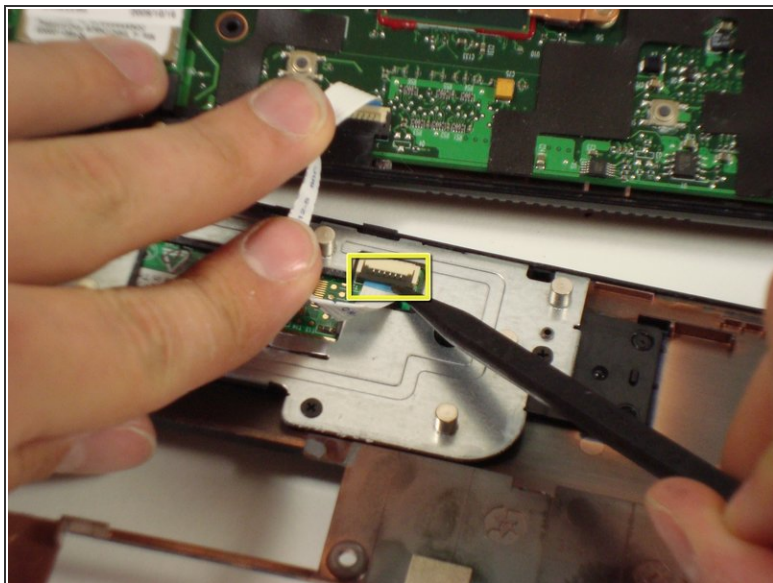
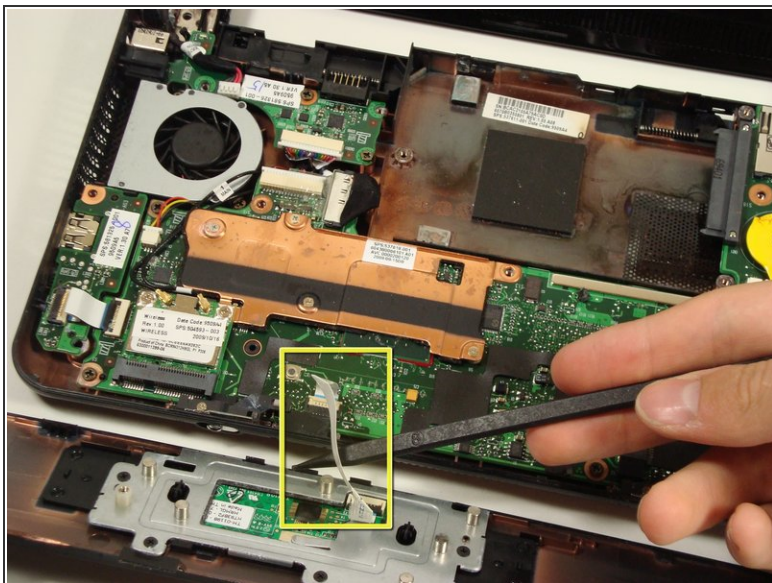
- Remove the eight screws from the plastic top cover.

Step 12



- Pry up the top plastic cover using a spudger.
- Under the screen there are two tabs that need to be pushed in.

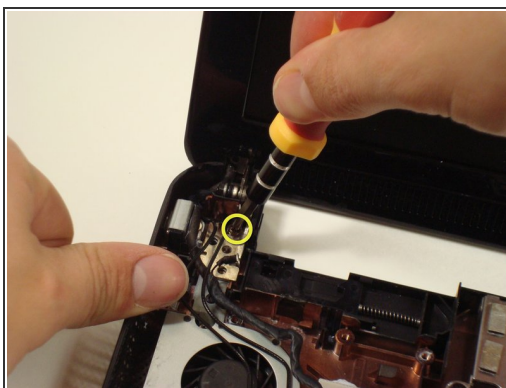
Step 13



⚠ Careful lifting up the cover because the track pad is still attached.

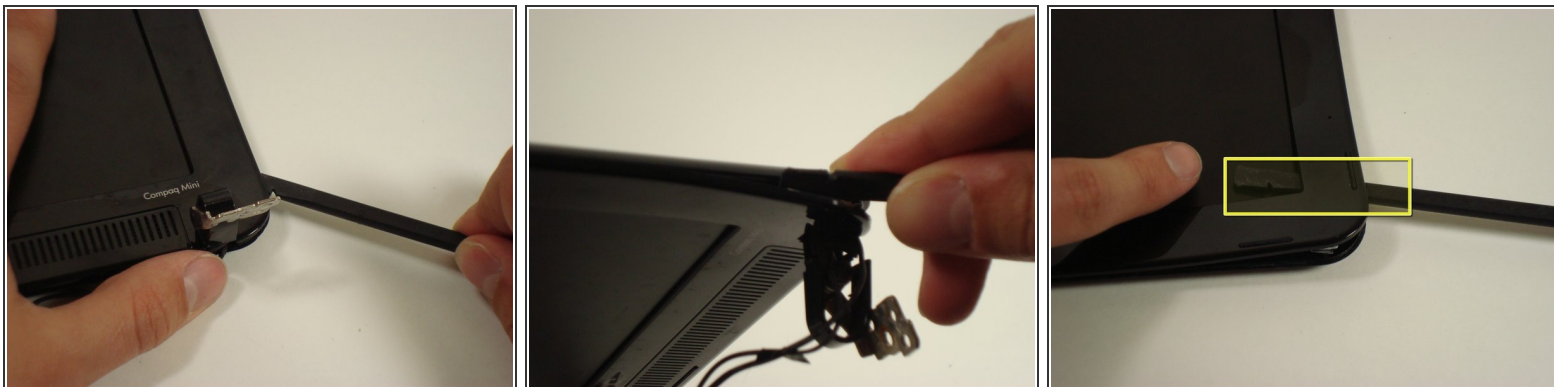
- Remove the cable by pulling it up.

Step 14 — Display Assembly



- Take out the four screws that keep the bottom of the hinges attached to the base.

Step 15



- Pry off the top plastic cover of the display assembly.

⚠ Note: There is adhesive tape holding the cover on.

⚠ Note: The spudger may go all the way through to the screen-side of the cover. This is ok and will not damage anything.

To reassemble your device, follow these instructions in reverse order.