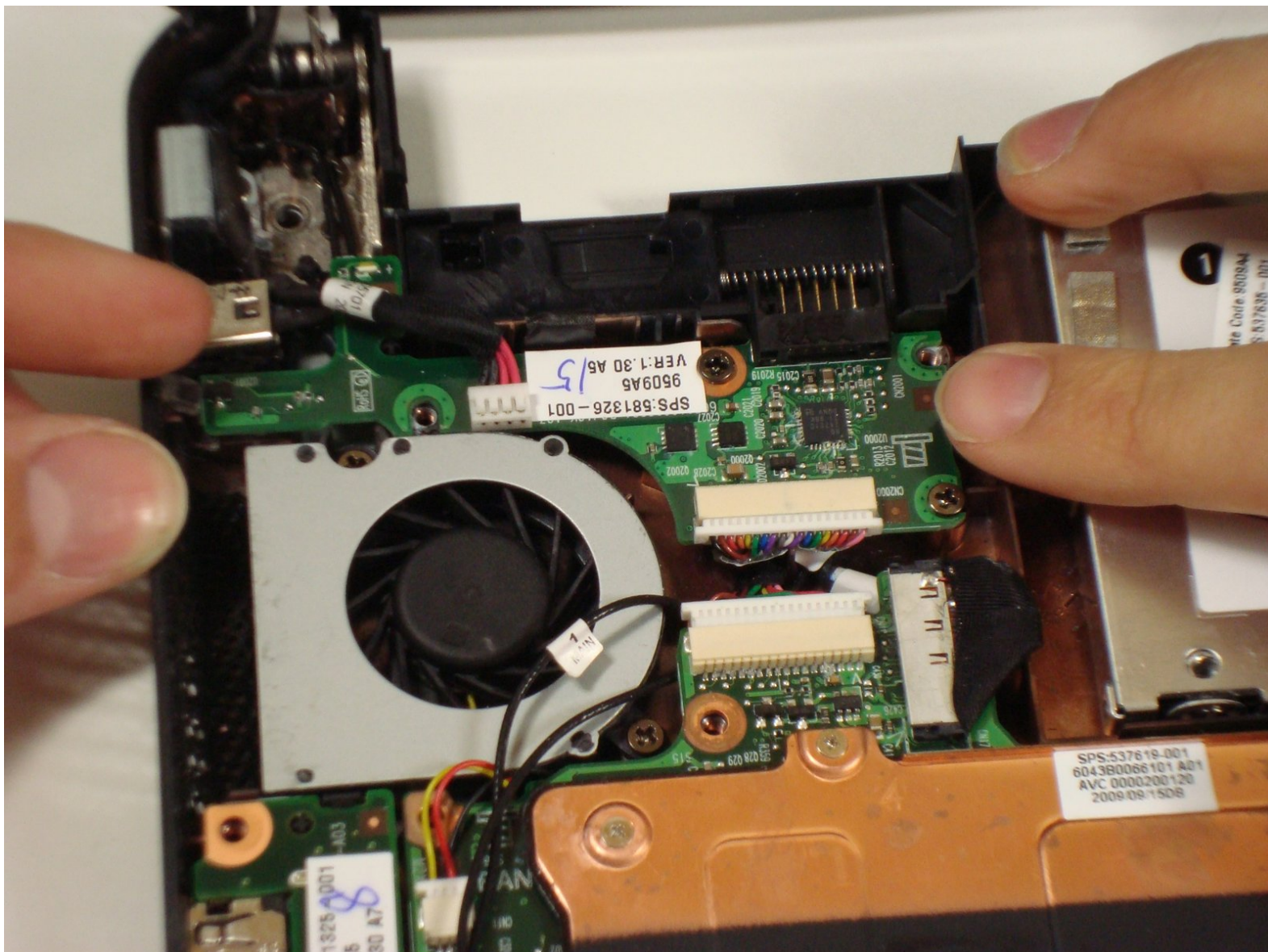




Disassembling Compaq Mini 110 Power Pass-Through Board

Removing the power pass-through board.

Written By: alea



INTRODUCTION

You may need to replace this board if there is something wrong when charging your device.



TOOLS:

- [Phillips #0 Screwdriver](#) (1)
 - [Spudger](#) (1)
-

Step 1 — Disassembling Compaq Mini 110 Battery



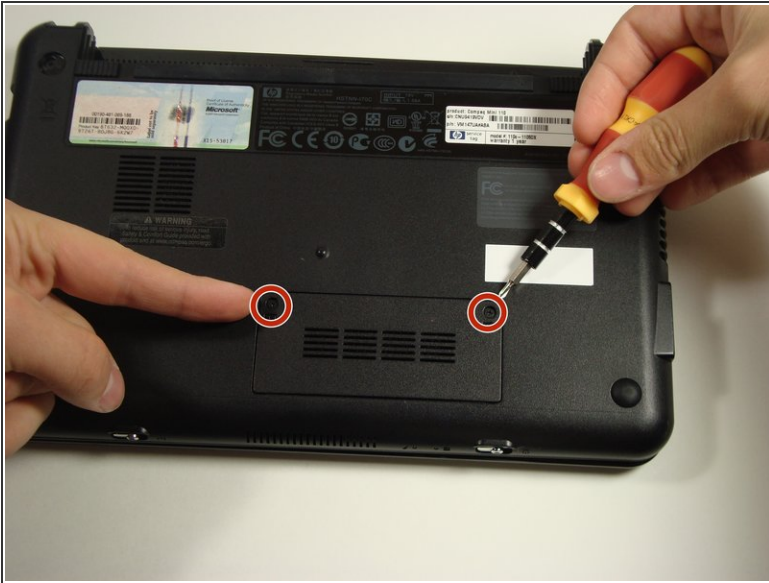
- Find the battery and the battery tabs located on the bottom of the Compaq Mini.

Step 2



- Push the tabs inward and slide the battery out.

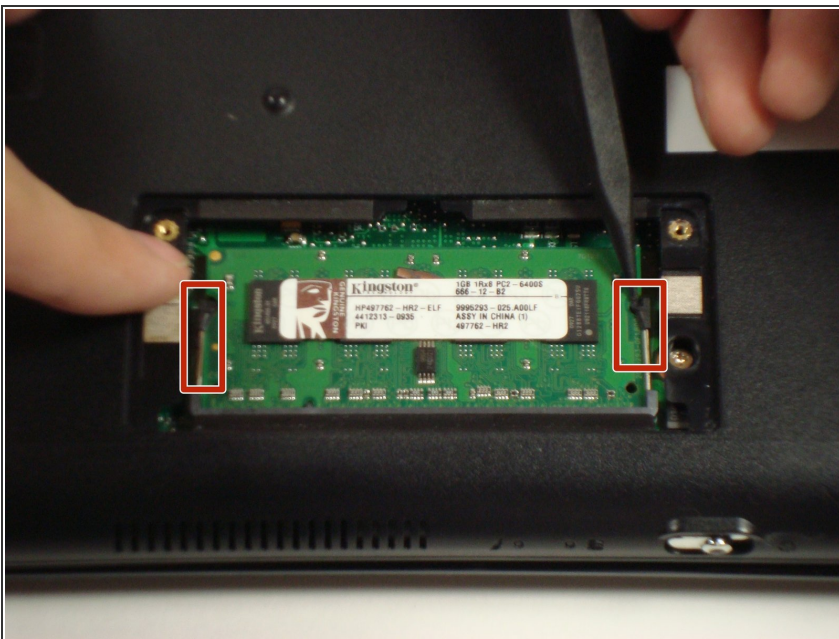
Step 3 — RAM



- Unscrew the two screws on the bottom of the laptop covering the memory compartment.

i The screws are attached to the panel.

Step 4



- Push out side tabs.

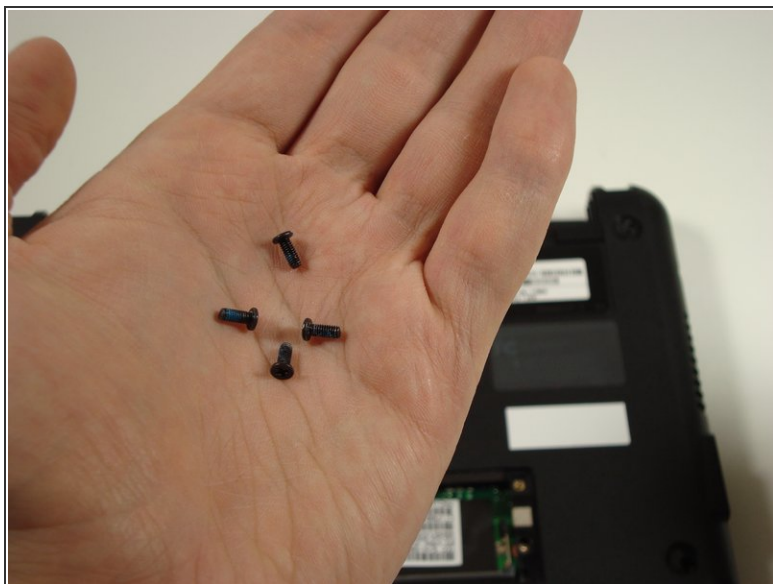
Step 5 — Keyboard



- Remove the rubber pads located on the corners of your Compaq Mini.

⚠ There may be junk underneath it. This is residue left from the glue that held on the rubber pad. Just scrape it away to find the screw.

Step 6



- Unscrew all the corner screws. There are four total, one under each rubber pad.

Step 7



- Unscrew the screw for the bottom case located in the RAM compartment.

Step 8



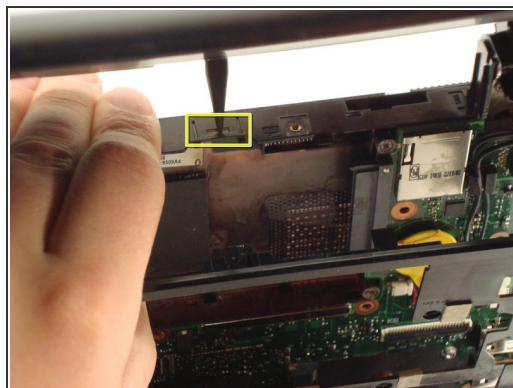
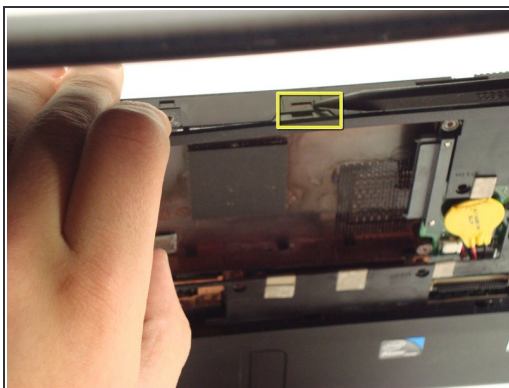
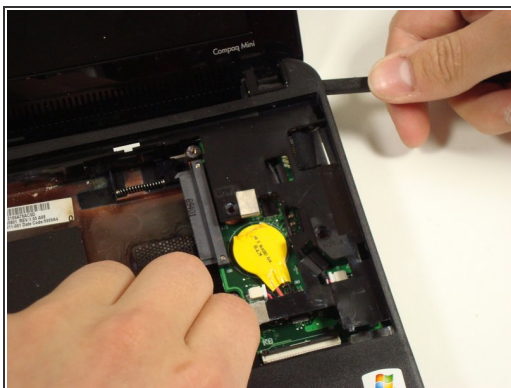
- Remove the three screws in the silver tabs at the back of the keyboard. The red circles show where they are located at the back of the base under the screen.

Step 9 — Top Cover



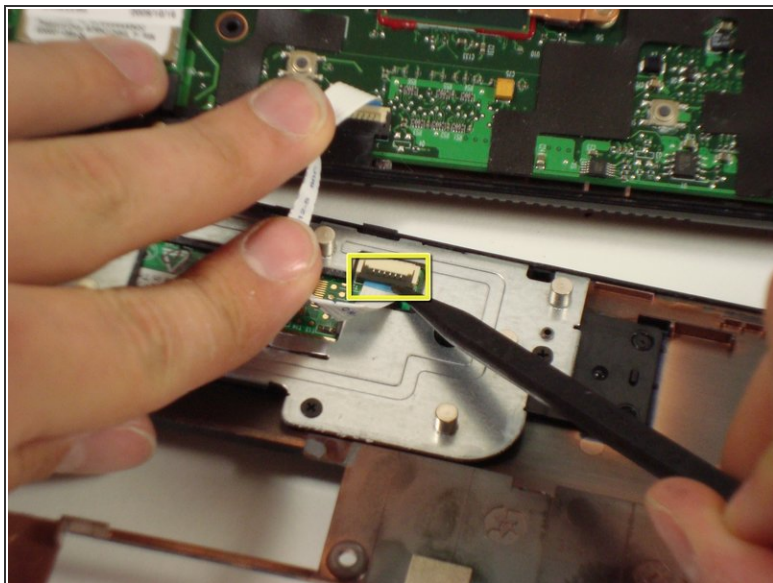
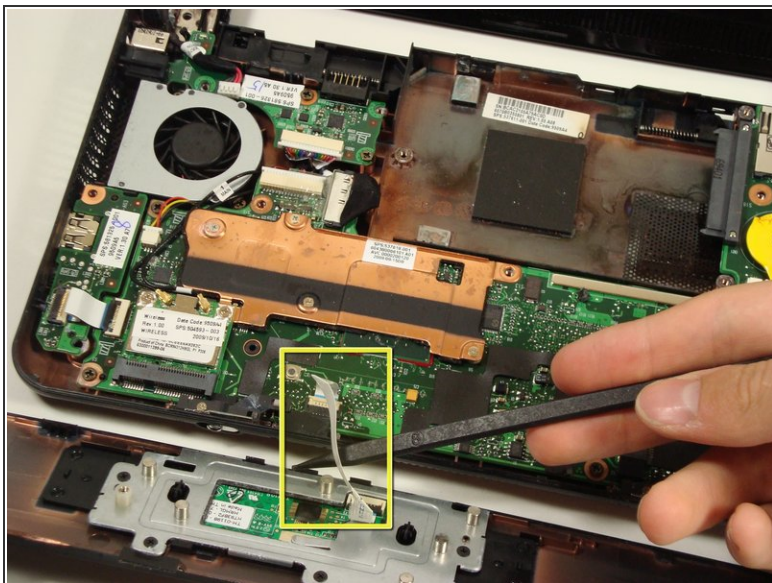
- Remove the eight screws from the plastic top cover.

Step 10



- Pry up the top plastic cover using a spudger.
- Under the screen there are two tabs that need to be pushed in.

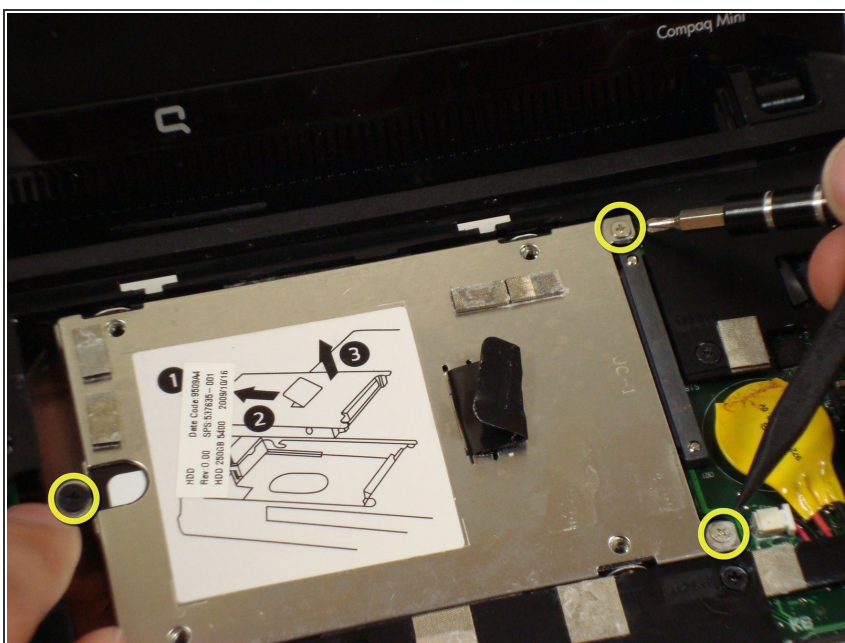
Step 11



⚠ Careful lifting up the cover because the track pad is still attached.

- Remove the cable by pulling it up.

Step 12 — Hard Drive



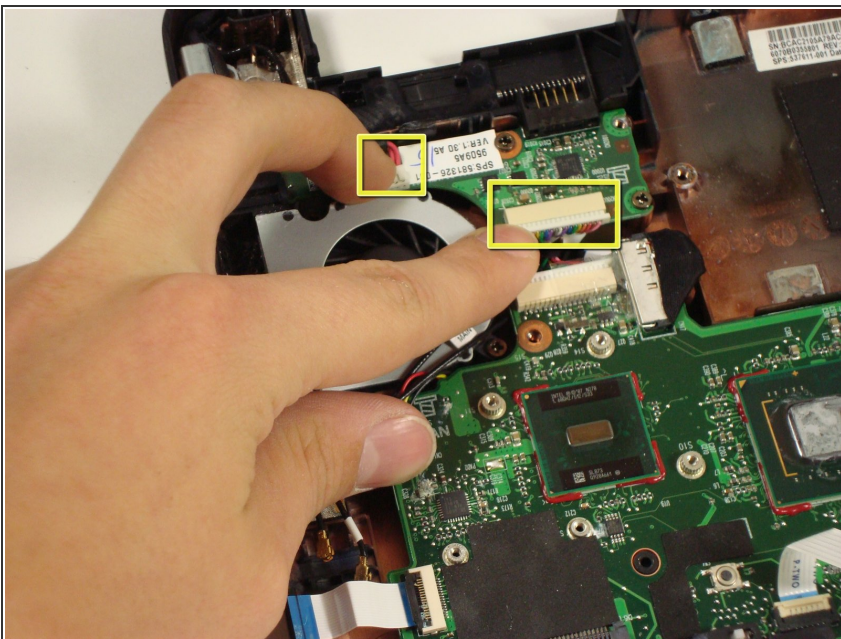
- Remove the three screws.

Step 13



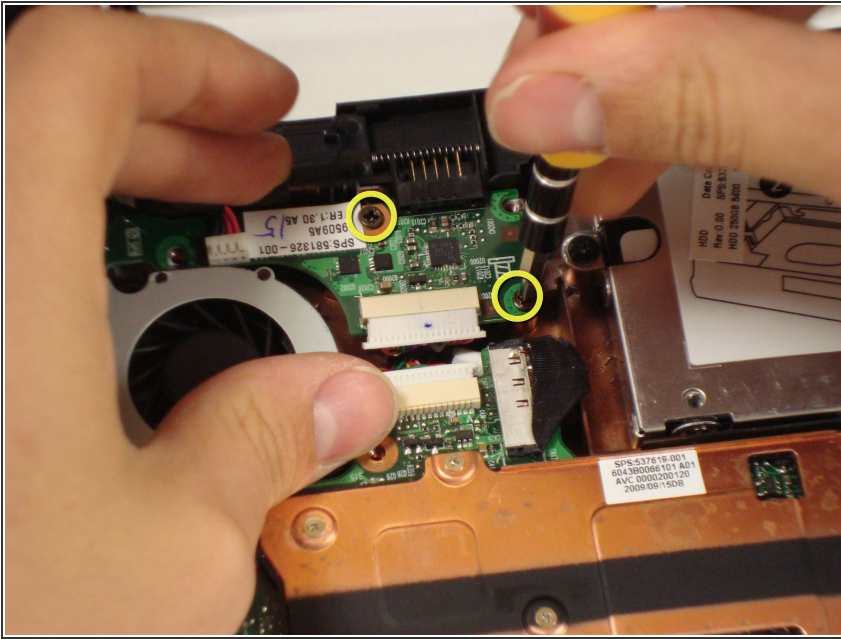
- Pull up on the tab.

Step 14 — Power Pass-Through Board



- Detach the cables.

Step 15



- Remove the two screws keeping the board in place.

To reassemble your device, follow these instructions in reverse order.