



Disassembling DeWalt D28110 Back Panel

Disassembly

The back panel holds most of the small electrical components that might need to be replaced.

Written By: Kean Wee



INTRODUCTION

Prerequisite Only



TOOLS:

- [Spudger](#) (1)
 - [T15 Torx Screwdriver](#) (1)
-

Step 1 — Disassembling DeWalt D28110 Back Panel Disassembly



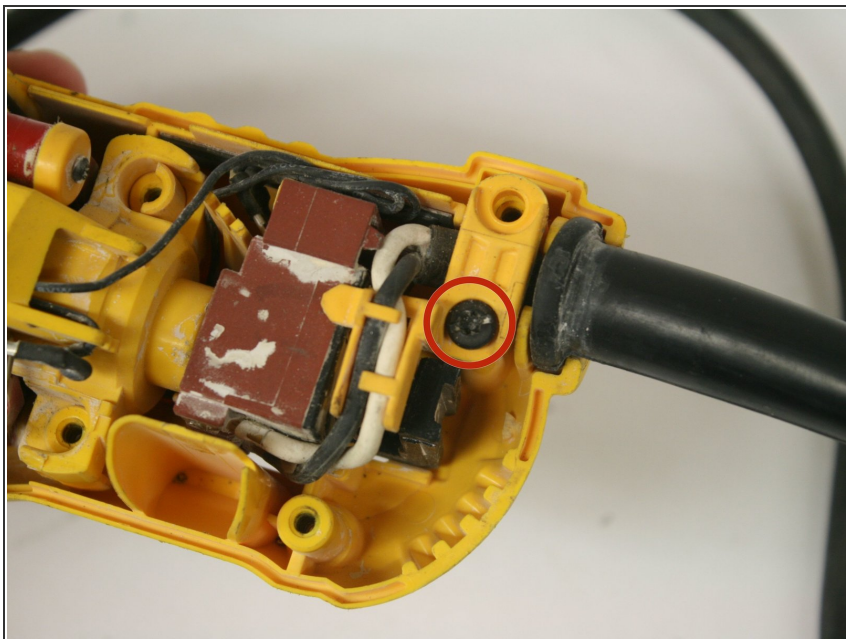
- Using the T-15 screwdriver, remove the four 22-mm torx screws holding the back panel in place.
- ⚠ Unplug the grinder before any disassembly.

Step 2



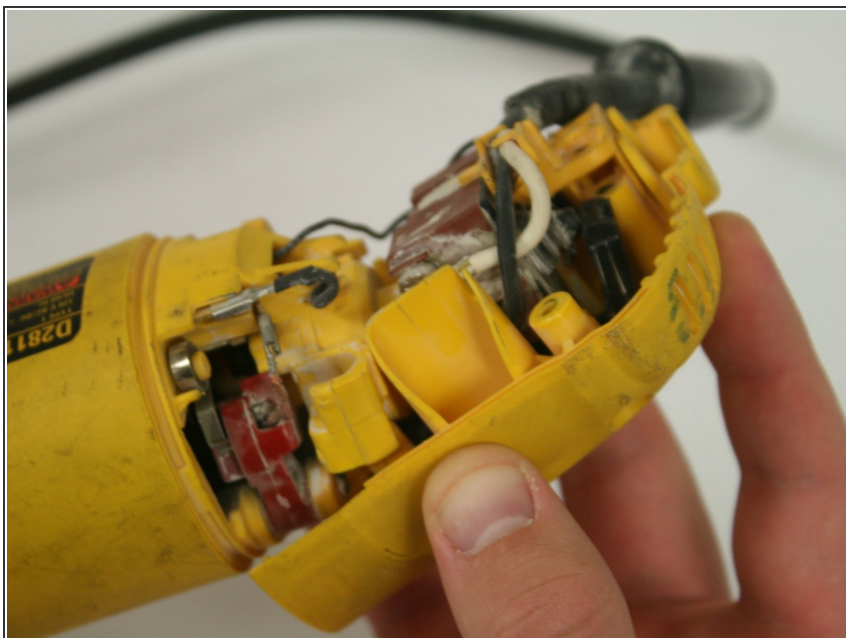
- Use the edge of the spudger to loosen and remove the back panel.

Step 3



- Remove the single 20-mm torx screw holding the rear panel in place.

Step 4



- Pull back the rear side of the back panel.

To reassemble your device, follow these instructions in reverse order.