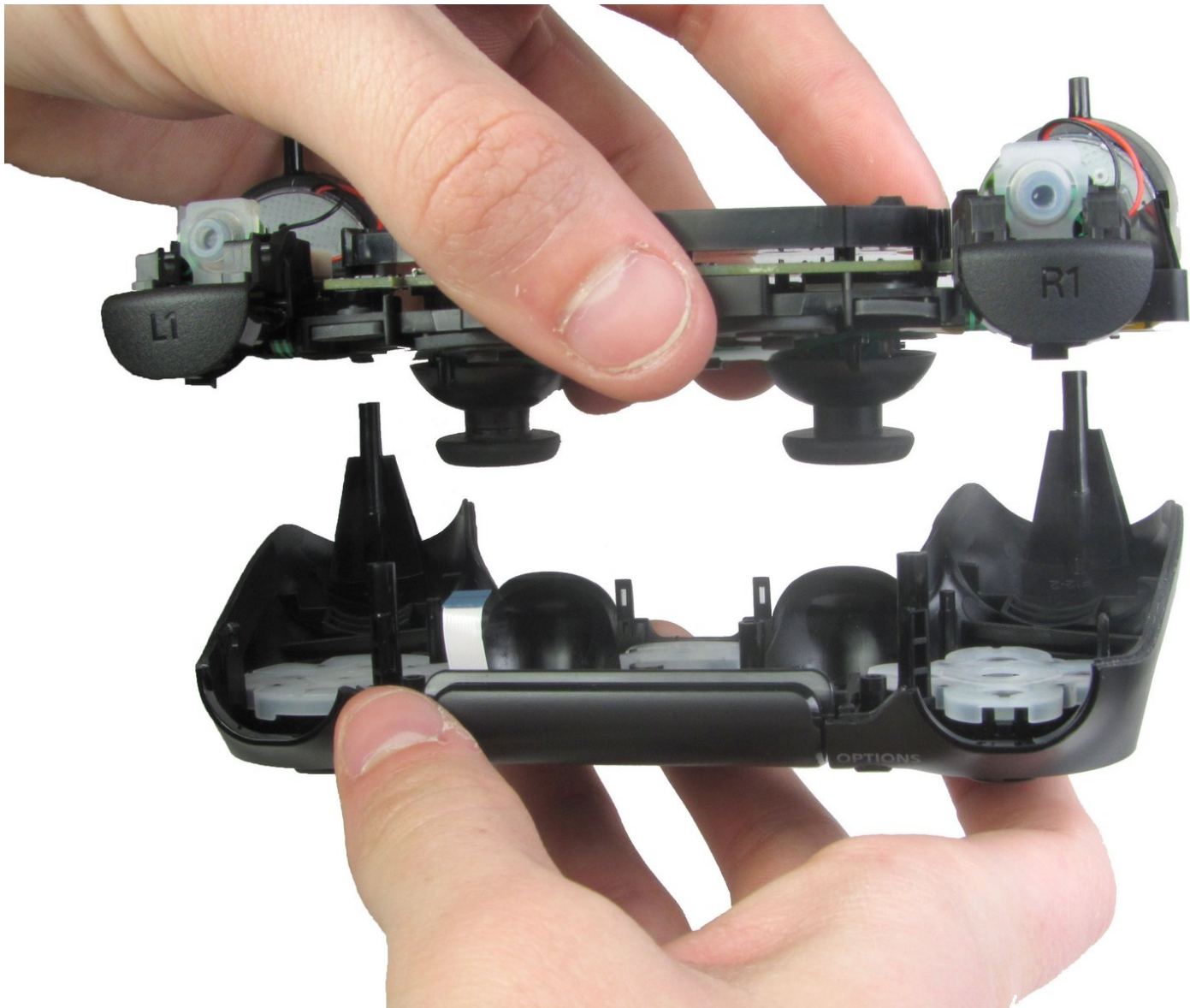




Disassembling DualShock 4 Motherboard Assembly

Disassemble the motherboard with its attached analog sticks and vibration motors.

Written By: Maaz Hussaini



INTRODUCTION

Use this guide to disassemble the motherboard assembly from the front and rear cover.



TOOLS:

- [Phillips #00 Screwdriver](#) (1)
- [iFixit Opening Tools](#) (1)



PARTS:

- [DualShock 4 Controller Motherboard and Midframe Assembly \(JDM-011\)](#) (1)
- [DualShock 4 Controller Motherboard and Midframe Assembly \(JDM-001\)](#) (1)
- [DualShock 4 Controller Motherboard and Midframe Assembly \(JDM-020\)](#) (1)

Step 1 — Controller



- Using the Phillips #00 Screwdriver, remove the four 6.0 mm screws securing the rear cover to the controller.

⚠ Do not forcefully loosen the screws, as it will amount to permanent damage of the threads, making removal impossible.

Step 2



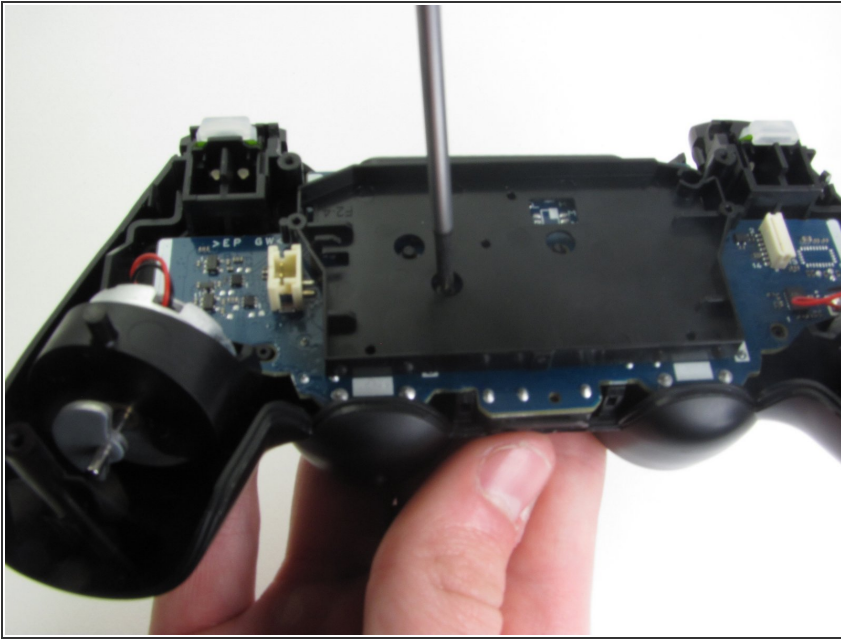
- Beginning with the **left handle**:
 - Pinch the left handle of the controller to introduce an opening.
 - Wedge a plastic opening tool into the opening and slide it up towards the joystick.
 - Pull down on the plier to crack open the casing.
- Repeat these steps for the **right handle**.

Step 3




- Wedge a plastic opening tool into the case-splittings and pull down to crack open the casing near the following buttons:
 - **Share** button
 - **Options** button
- Split the plastic covers of the controller apart, taking note that they will still be attached by circuit board ribbons.
- ⓘ Three small pieces are often released from the framework. To prevent loss, maintain a controlled work field.
 - 2 Trigger Springs
 - 1 Grey Reset Button Extension

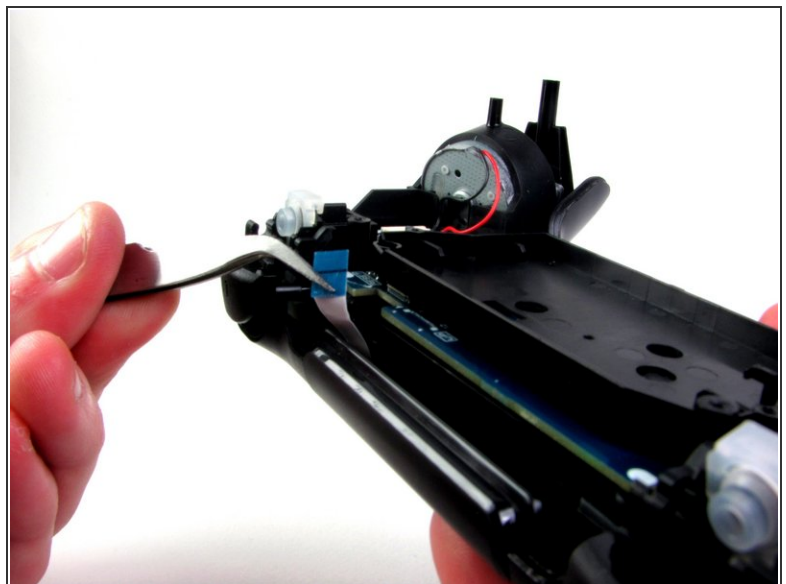
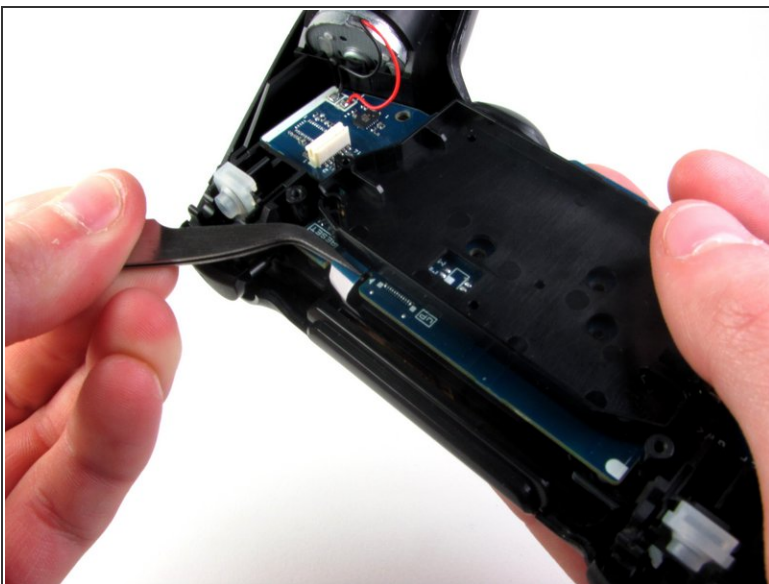
Step 4 — Disassembling DualShock 4 Motherboard Assembly



- Remove the single 6.0 mm Phillips screw found below the battery retainer with the Phillips #00 Screwdriver.

 Do not forcefully loosen the screw, as it may amount to permanent damage of the threads, making removal impossible.

Step 5



- Gently detach the touchpad ribbon connected to the motherboard using the blunt forceps. The touchpad ribbon is connected to the motherboard by a connector that flips to tighten and loosen. During reassembly, to reattach the ribbon, the plastic tray will need to be gently removed from the motherboard and the flip-lock flipped up.

Step 6



- Carefully dislodge the motherboard assembly from the front cover.
 - Vibration motors are loosely attached to the motherboard assembly. Provide support at the two ends to ease the separation.
- ⓘ When removing the motherboard assembly, try not to tilt the front cover upside down as the buttons and their covers may fall out.

Step 7 — Disassembly Complete



- Successful disassembly of the controller will result in the following three parts, respectively:
 - Motherboard Assembly
 - Front Cover
 - Rear Cover

To reassemble your device, follow these instructions in reverse order.