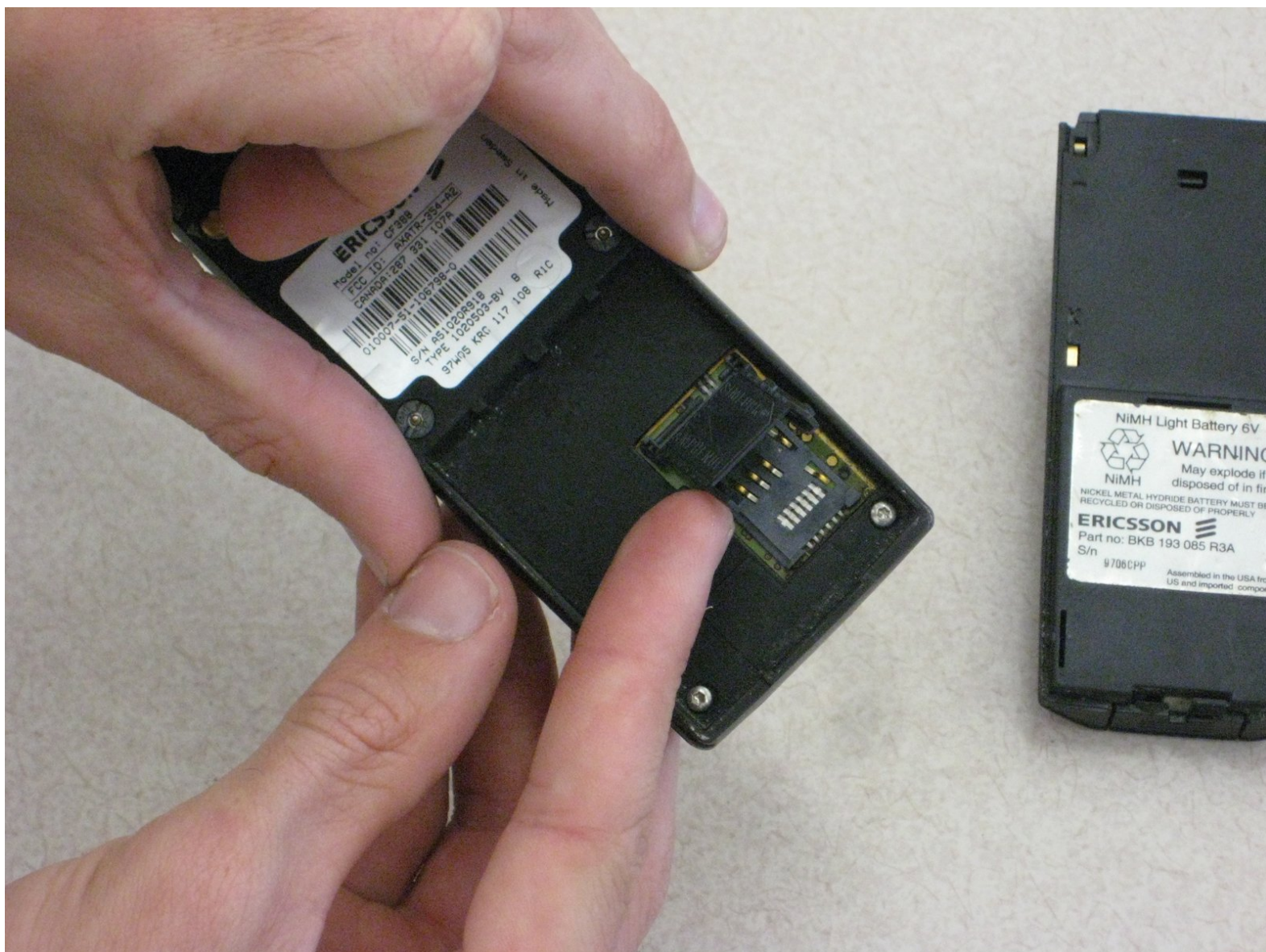




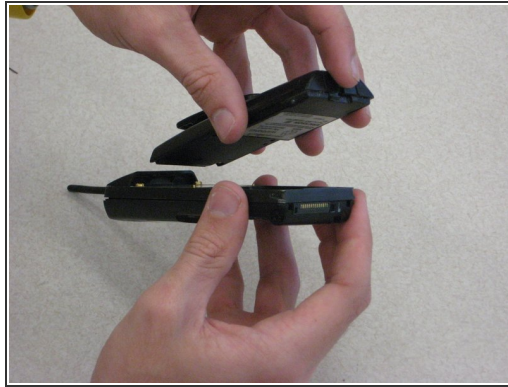
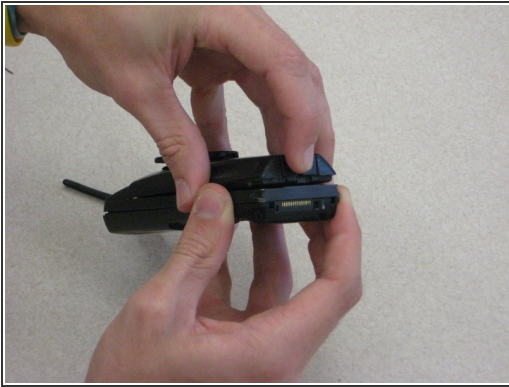
Disassembling Ericsson CF 388 Sim Card

This guide is used to help users replace/locate/repair/install the sim card.

Written By: Cam Miller



Step 1 — Disassembling Ericsson CF 388 Battery



- To remove the battery from the casing, grab the front panel and back panel with opposite hands (as shown). The back panel is the same as the battery.
- With your index finger, push in the button on the bottom of the battery to release it.
- Pull the battery away from the phone.

Step 2 — Disassembling Ericsson CF 388 Sim Card



- After removing the battery, the SIM card is accessible. Locate the SIM card casing at the bottom right of the back of the front panel casing.
- To remove the SIM card, using your index finger, carefully lift up and rotate the plastic casing.
- Then, the SIM card easily slides out of the casing.

To reassemble your device, follow these instructions in reverse order.