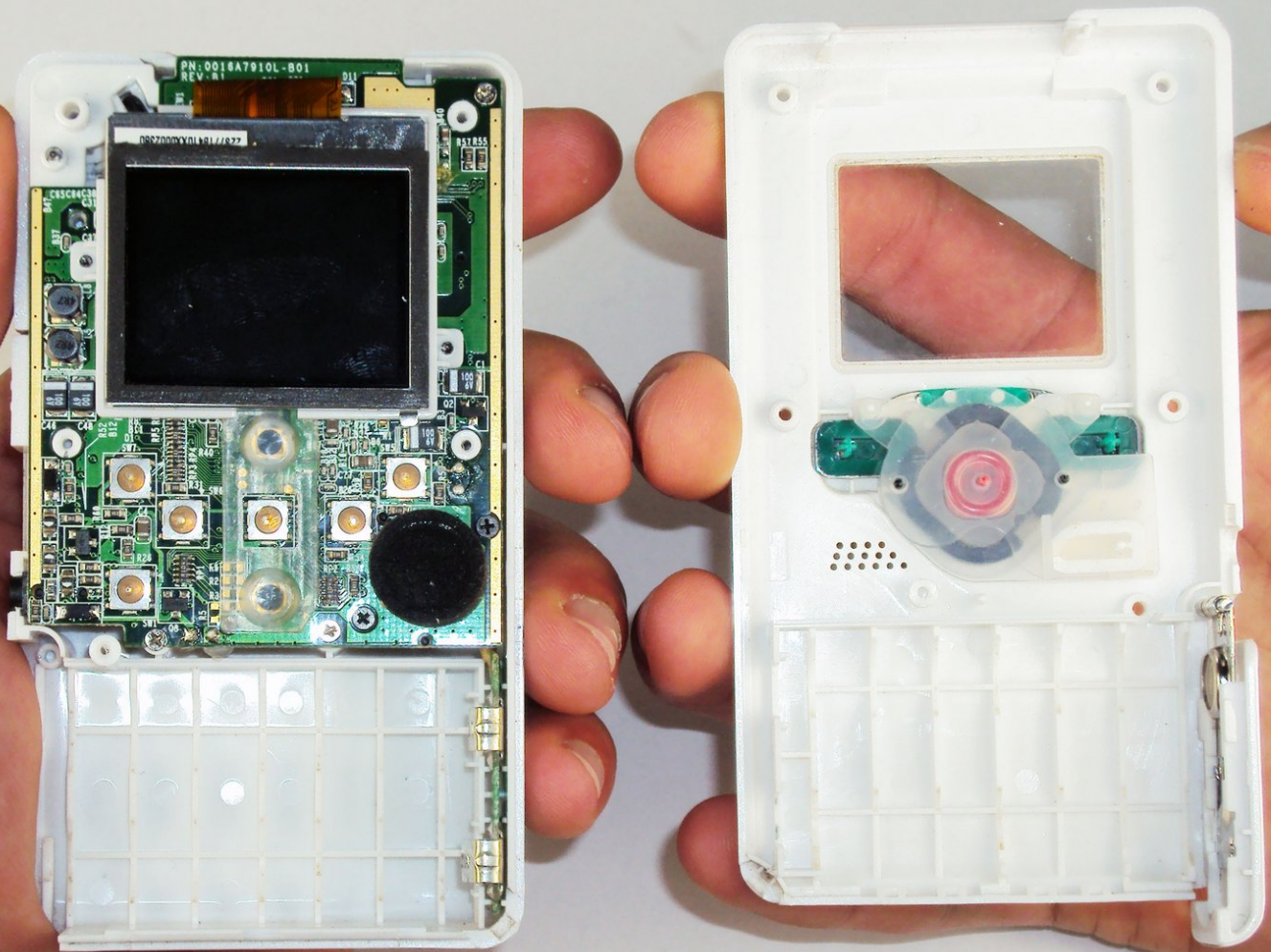




Disassembling Flip Video Outer Shell

Written By: Elizabeth



INTRODUCTION

This guide will show you how to open the outer shell of your Flip Video.



TOOLS:

- [Phillips #00 Screwdriver](#) (1)
 - [Spudger](#) (1)
-

Step 1 — Outer Shell



- ✦ Turn off the device and take the batteries out.
- Remove metal sticker under the LCD screen with a spudger.
- ⓘ This may require a large force to pry off the glued sticker.

Step 2



- Remove the 4 gray screw caps with the spudger. These cover the screw heads and protect from dirt or grime.

Step 3



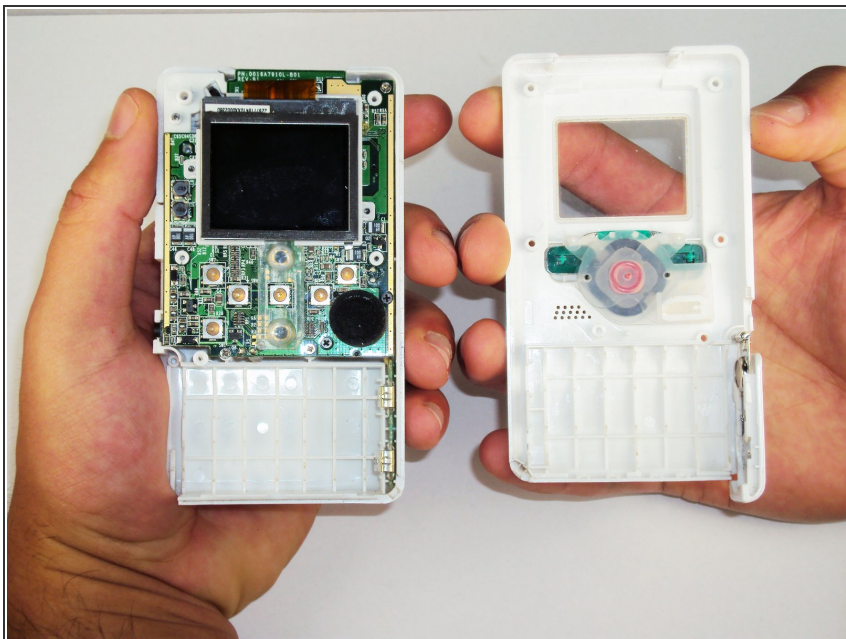
- Remove the 5 10mm screws with the #00 Phillips screwdriver. These connect the back of the outer shell to the front of the outer shell.

Step 4



- Open battery door. This can be done by gently depressing and sliding the battery down downward.

Step 5



- Use the spudger to separate outer shells.
- The spudger must be inserted between the shell halves to pry the edges apart.
- Slowly work around the outside to separate the halves.

To reassemble your device, follow these instructions in reverse order.