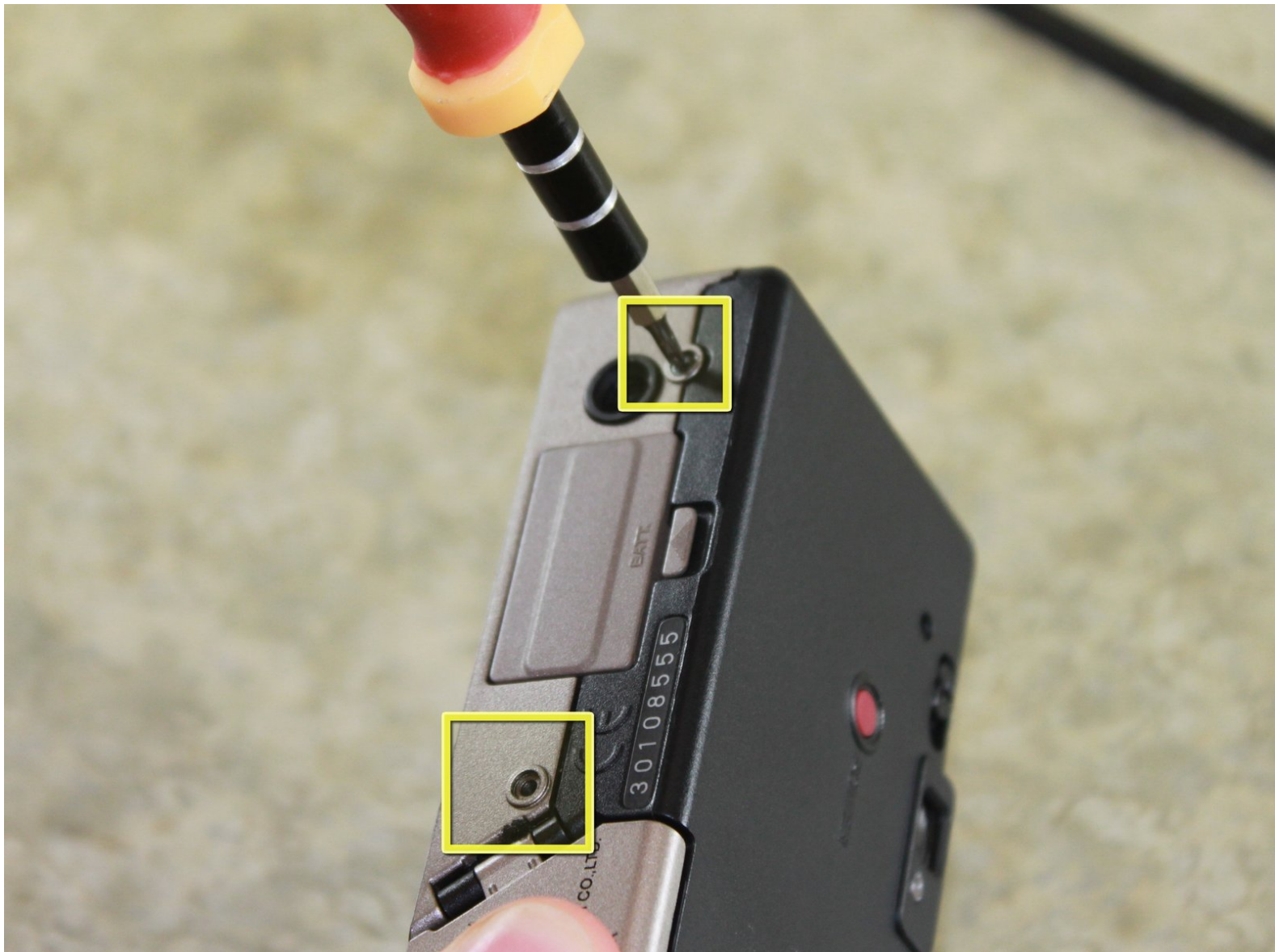




# Disassembling Fujifilm Endeavor 100ix Outer Casing

This guide will provide instructions on how to disassemble the Fujifilm Endeavor 100 ix camera.

Written By: Eric Nicolai



---

## INTRODUCTION

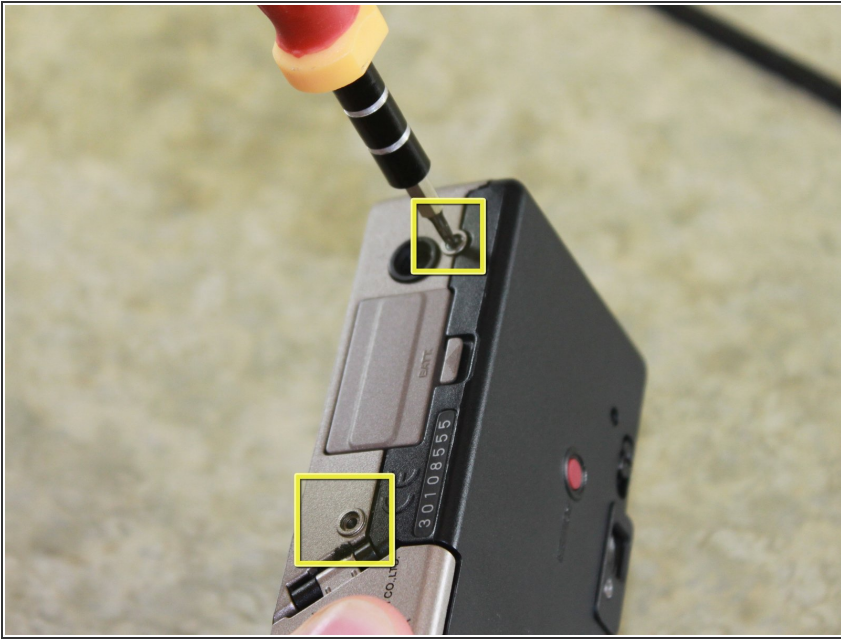
This guide will instruct camera owners how to take off the outer casing and how to access the inside components to repair and/or replace broken parts.

---

### **TOOLS:**

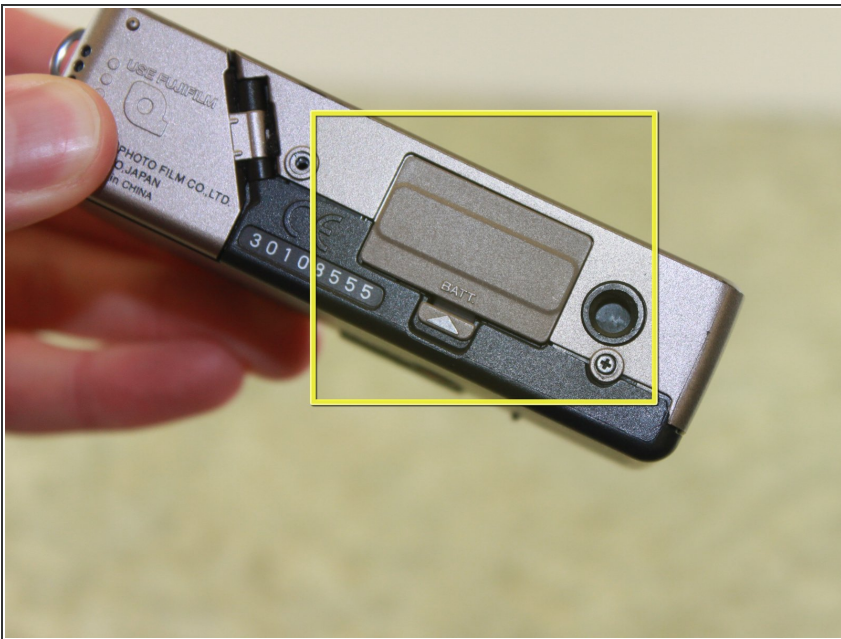
- [Phillips #00 Screwdriver](#) (1)
  - [Spudger](#) (1)
-

## Step 1 — Outer Casing



- Locate and remove two 6.4mm screws on the bottom of the camera with a Phillips #00 screwdriver.

## Step 2



- Locate the battery door.



### Step 3



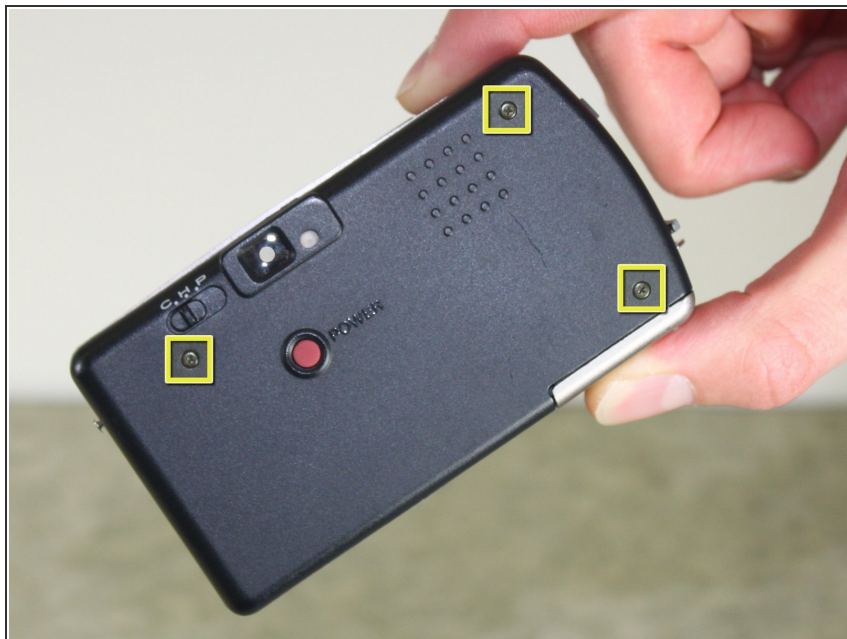
- Locate the latch on the battery door marked by the word "BATT." Use your finger to pry it open.

### Step 4



- Remove the battery from the camera by pulling the battery door outwards.

## Step 5



- Locate and remove three black 3.80mm screws on the back of the camera with the Phillips #00 screwdriver.

## Step 6



- Locate and remove the 6.4mm screws located on either side of the camera with a Phillips #00 screwdriver.



## Step 7



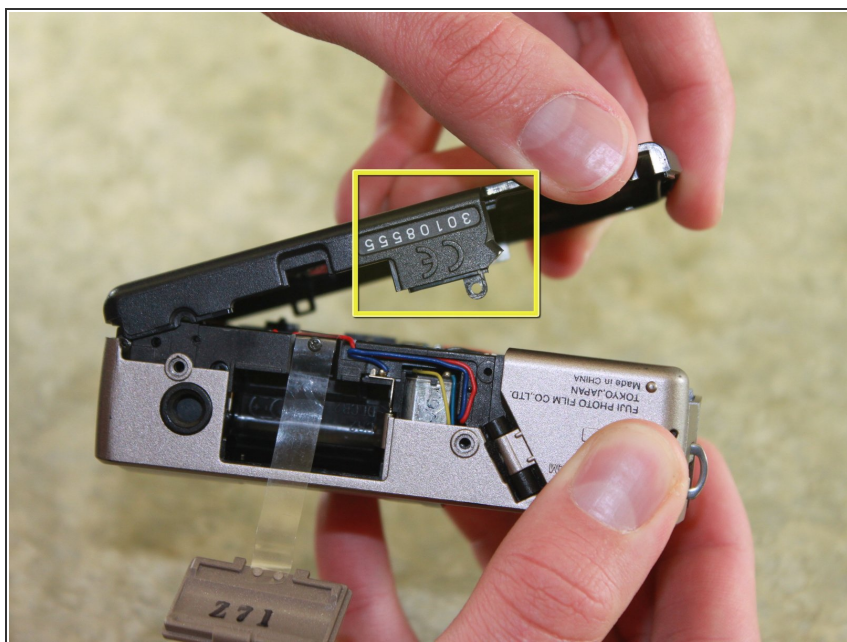
- Locate the film door latch located on the side of the camera.
- Insert the spudger under the latch.
- ⚠ Caution: Be careful during the following step in order to not break any parts within the camera. Prying the latch in any other direction than perpendicular may result in broken parts.
- Pry the latch upward, applying force perpendicular to the camera.

## Step 8



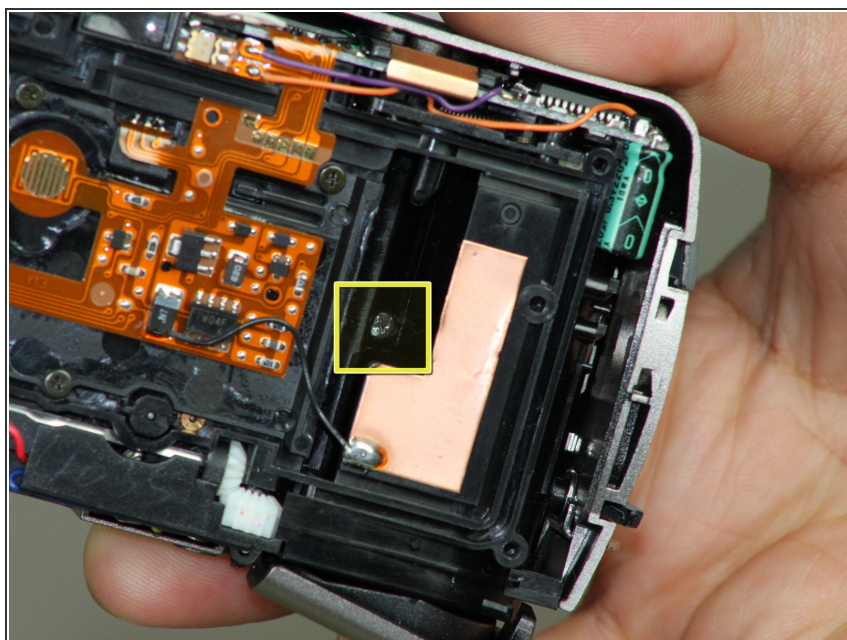
- Insert the flat edge of the spudger between the gold front casing and the black back casing.
- Pry the spudger upward until the black back casing snaps out and is dislodged on that edge of the camera.

## Step 9



- Squeeze the camera by placing a thumb on the tab marked CE.
- Pull the back half of the camera firmly away from the camera body.

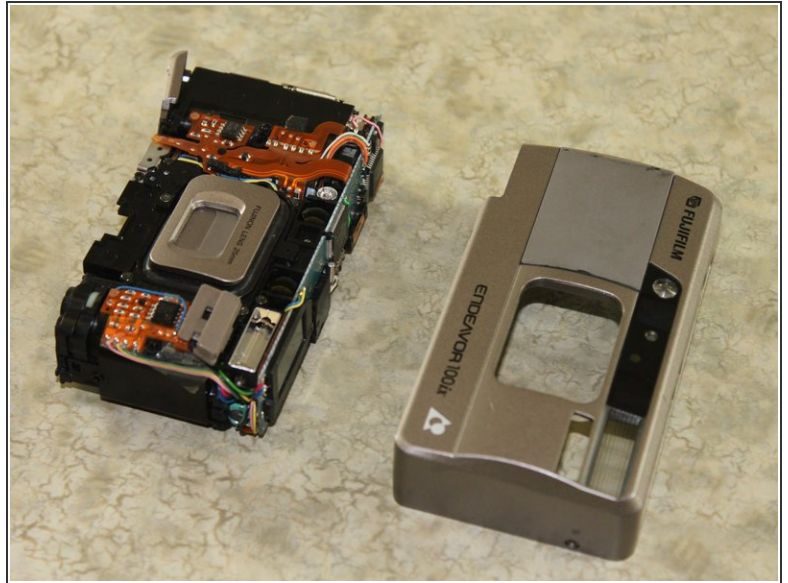
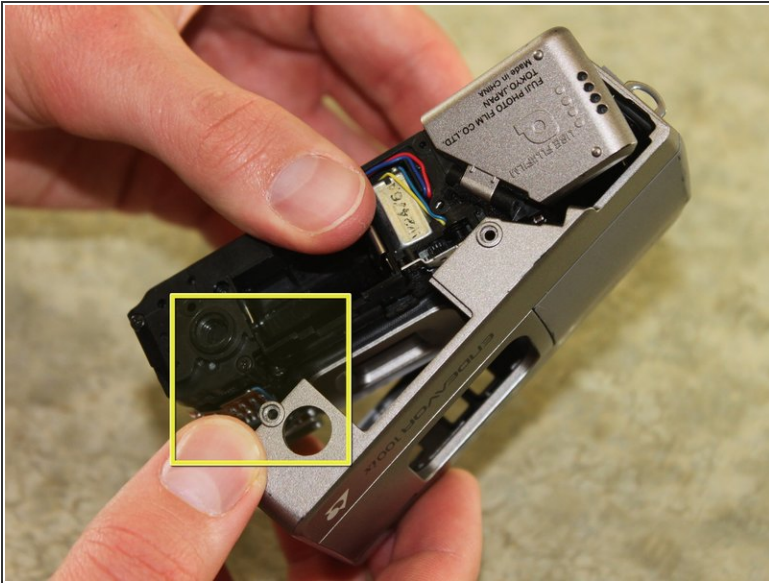
## Step 10



- Locate and remove the 3.80mm screw inside the film compartment with the Phillips #00 screwdriver.



## Step 11



- Pull the front cover off of the camera by lifting the tripod tab over the tripod hole.

To reassemble your device, follow these instructions in reverse order.