



Disassembling General Electric Telephone 2-9710A Handset

Open the telephone's handset to allow access to logic board and other internal components

Written By: Alles Rebel



INTRODUCTION


Use this guide to remove the shell of the handset

TOOLS:

- [Phillips #1 Screwdriver](#) (1)
 - [iFixit Opening Tools](#) (1)
-

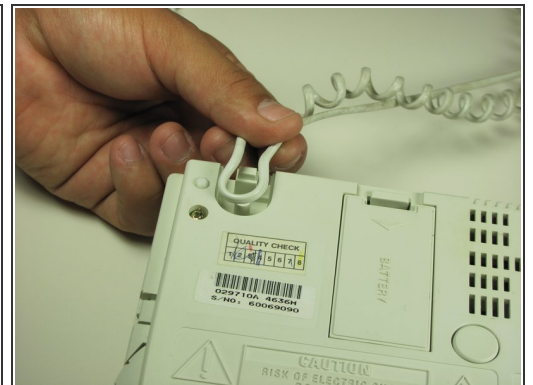
Step 1 — Phone Cord



 Unplug the device before proceeding.

- Using a plastic opening tool, remove the phone cord from the phone jack from the base of the headset.

Step 2



- Remove the phone cord screw cap.
 - Unscrew the 7.5mm screw.
- Remove the screw cap.
- Remove the cord from the phone base.

Step 3 — Disassembling General Electric Telephone 2-9710A Handset



- Remove the plastic cover with a Plastic Opening Tool by gently sliding the tool underneath the plastic and pry the cover off.

Step 4



- Remove the paper with a Plastic Opening Tool by gently sliding the tool underneath and prying the paper away from the phone.

Step 5



- Remove the rubber stopper with a Plastic Opening Tool by gently sliding the tool underneath and pry away from the phone.

Step 6



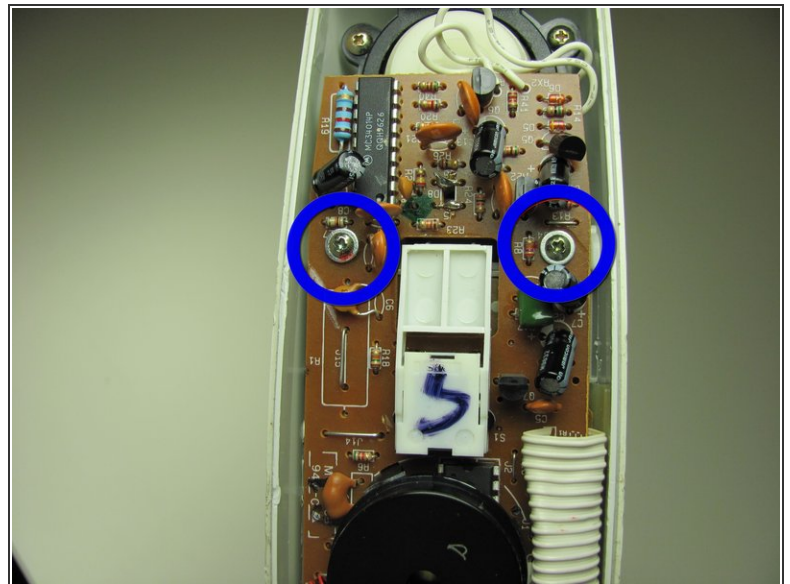
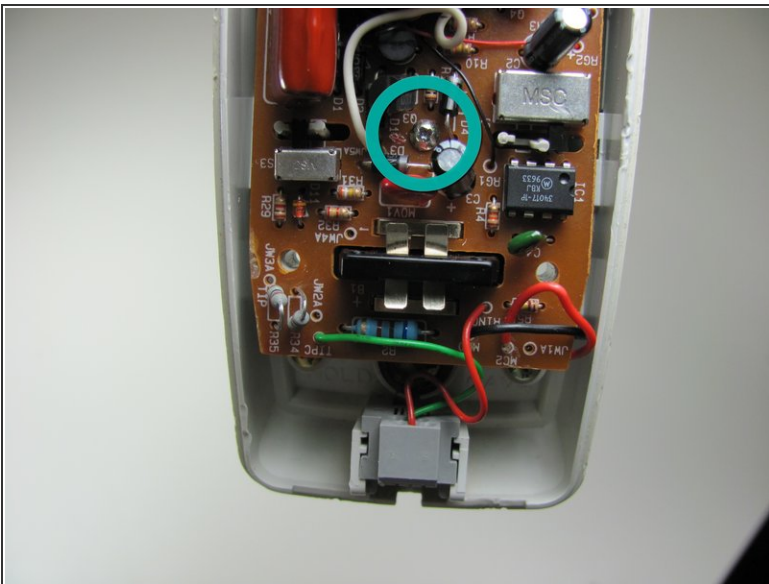
- Remove the two screws.
 - Remove the 2 21mm screws by using a Philips #1 screwdriver.

Step 7



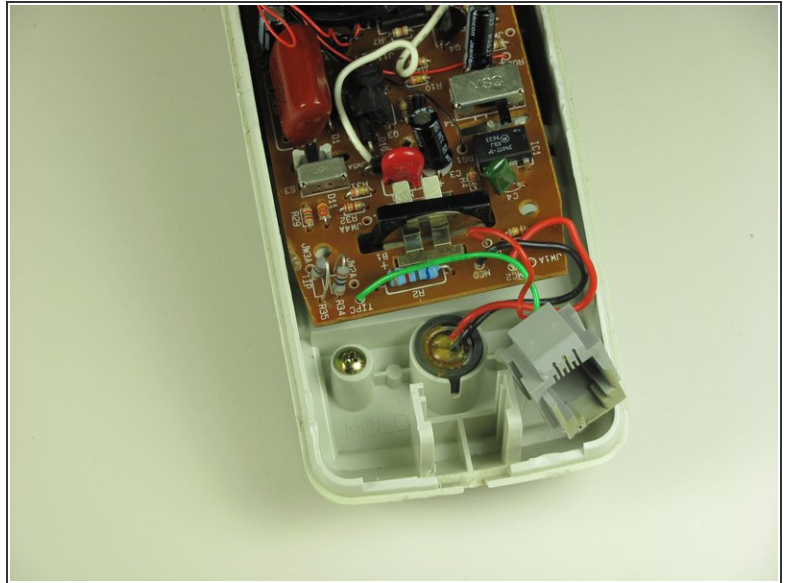
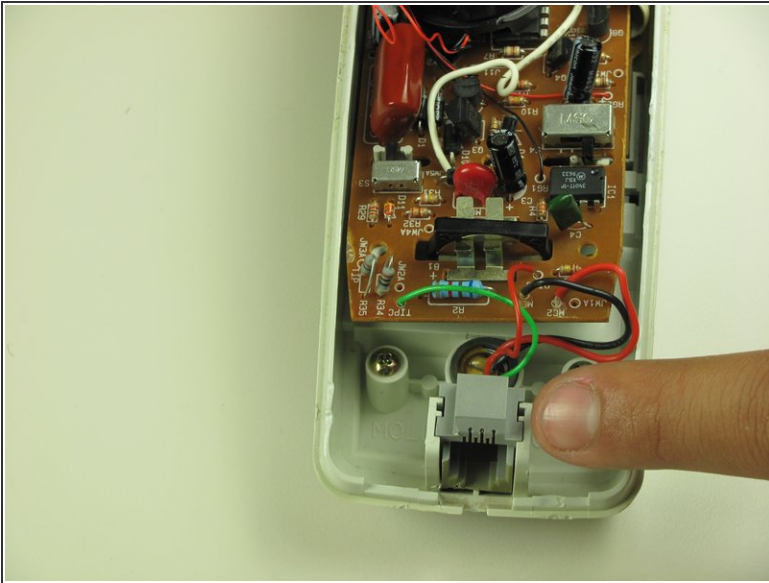
- Pull apart the handset by pulling the shell away from the other half of the phone.

Step 8



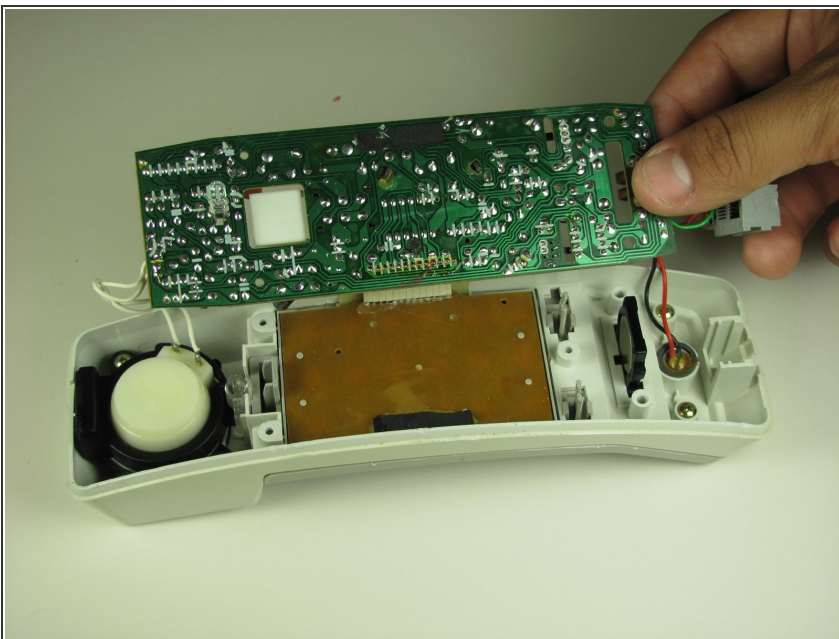
- Remove 3 screws attaching the logic board to shell.
 - Remove the 13mm screw with a Philips #1 screwdriver.
 - Remove the 2 13mm screws with washers with a Philips #1 screwdriver.

Step 9



- Slide out the phone jack from the shell by gently lifting up the phone jack.

Step 10



- Without removing the logic board completely, pivot the logic board out of shell.

To reassemble your device, follow these instructions in reverse order.