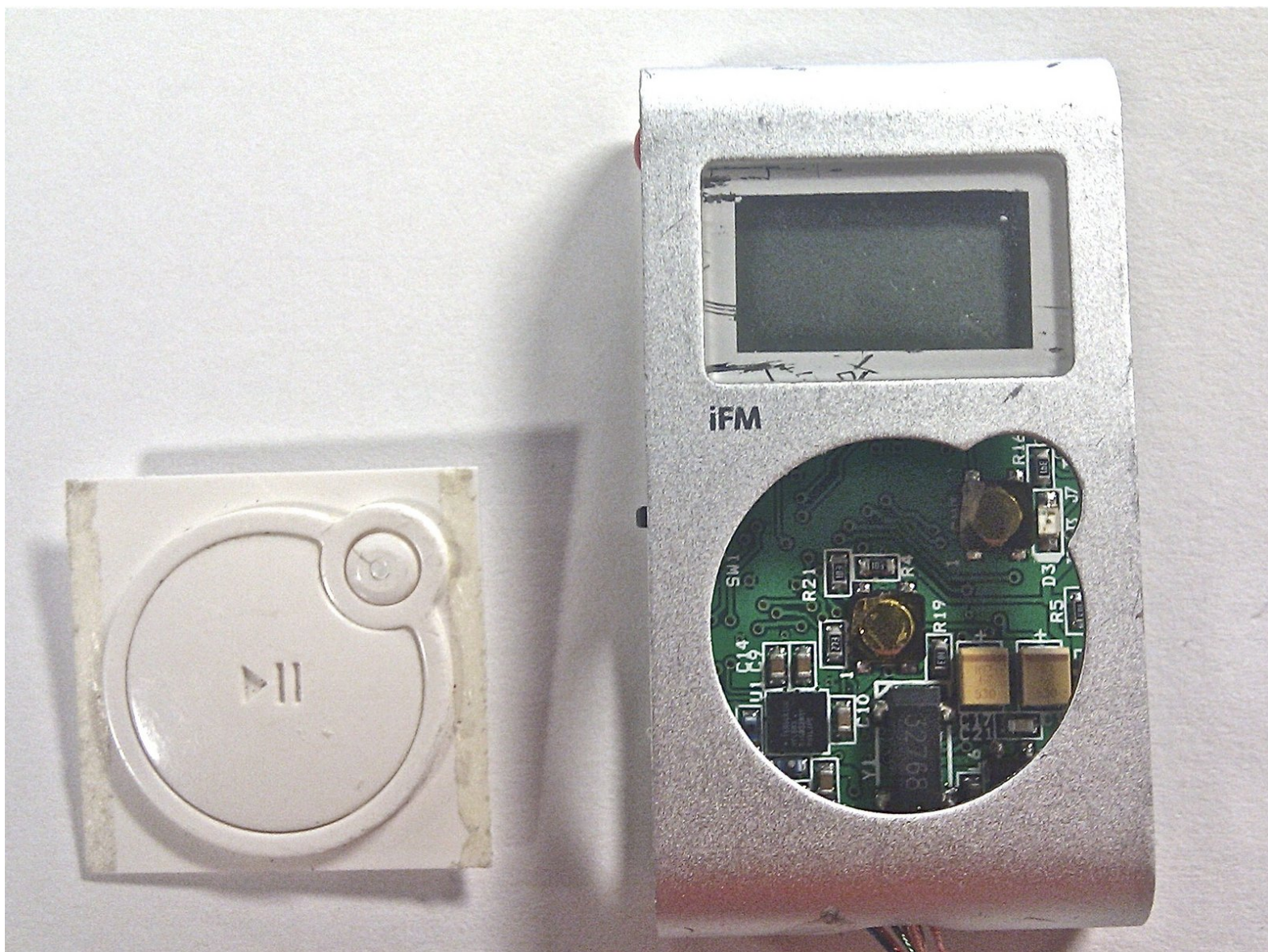




Disassembling Griffin iFM 4027 Central Button

This guide directs the user towards how to remove the central button.

Written By: Alexander



INTRODUCTION

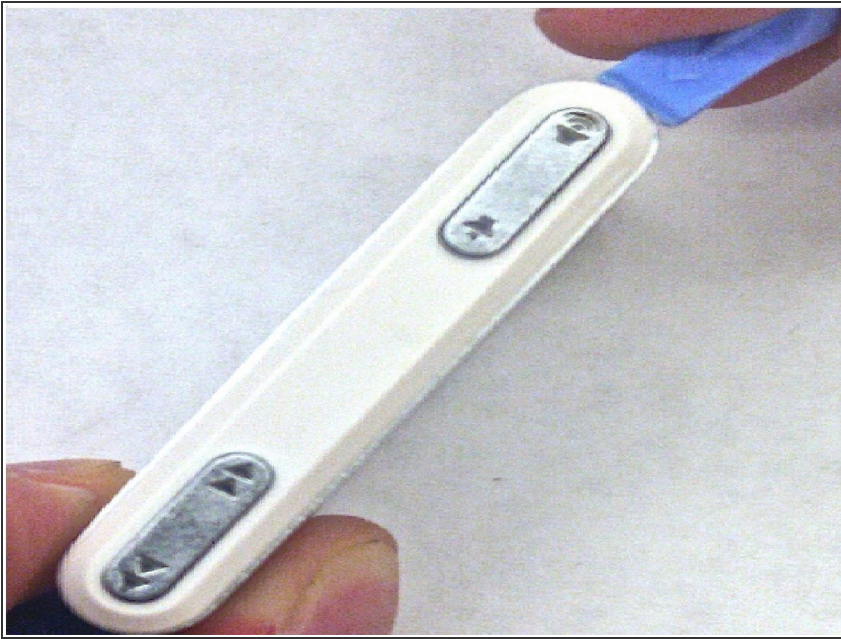
The central button is responsible for the stopping and playing of audio tracks. The side panels must be removed before the button can be removed appropriately.



TOOLS:

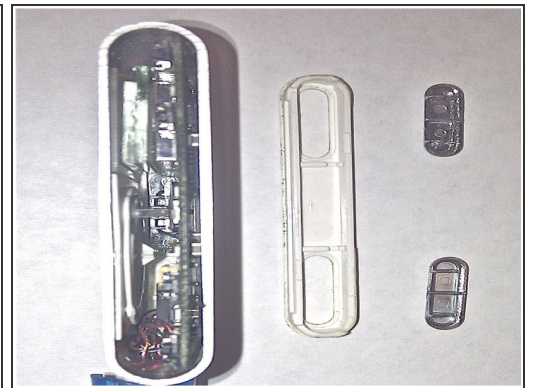
- [iFixit Opening Tools](#) (1)
-

Step 1 — Disassembling Griffin iFM 4027 - Right Side Panel (Screen Side Up)



- Use the plastic opening tool.
- Lodge the tip into the corner of the device; Applying pressure upward, allowing the panel to be released.

Step 2



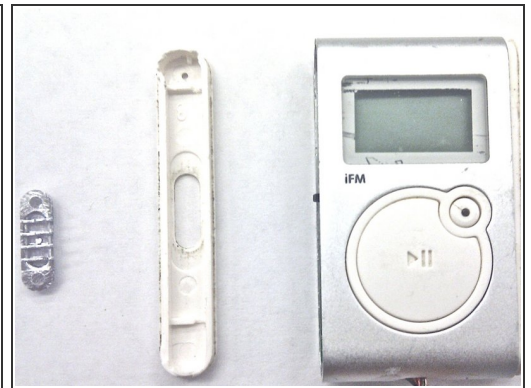
- The side panel can now be detached using your fingers.
- The buttons can be dislodged by turning the panel over and shaking it, if necessary.

Step 3 — Left Side Panel (Screen Side Up)



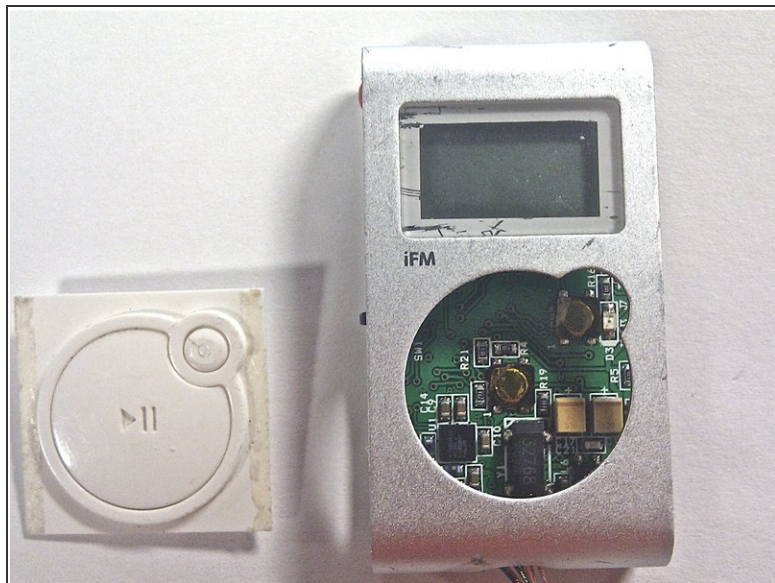
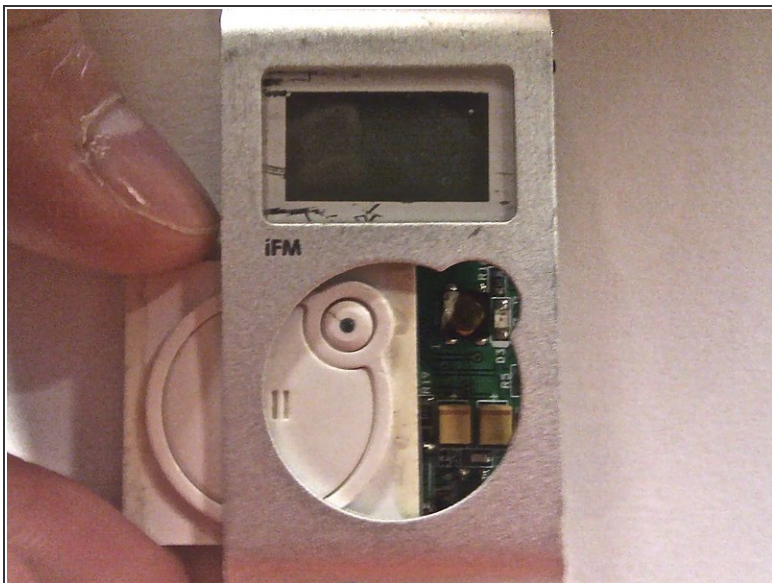
- Lodge the tip of the plastic opening tool into the top arc of the front panel. Apply a little force to cause the panel to detach.

Step 4



- Slide the blue opening tool along the seam applying force to continue detaching the side panel.
- Remove the button from the side panel.

Step 5 — Central Button



- The central button can easily be removed by using your fingers or tweezers to push the button out towards the left panel.

After disassembly, the device components should look similar to that which is depicted in the cover image (top right of page).