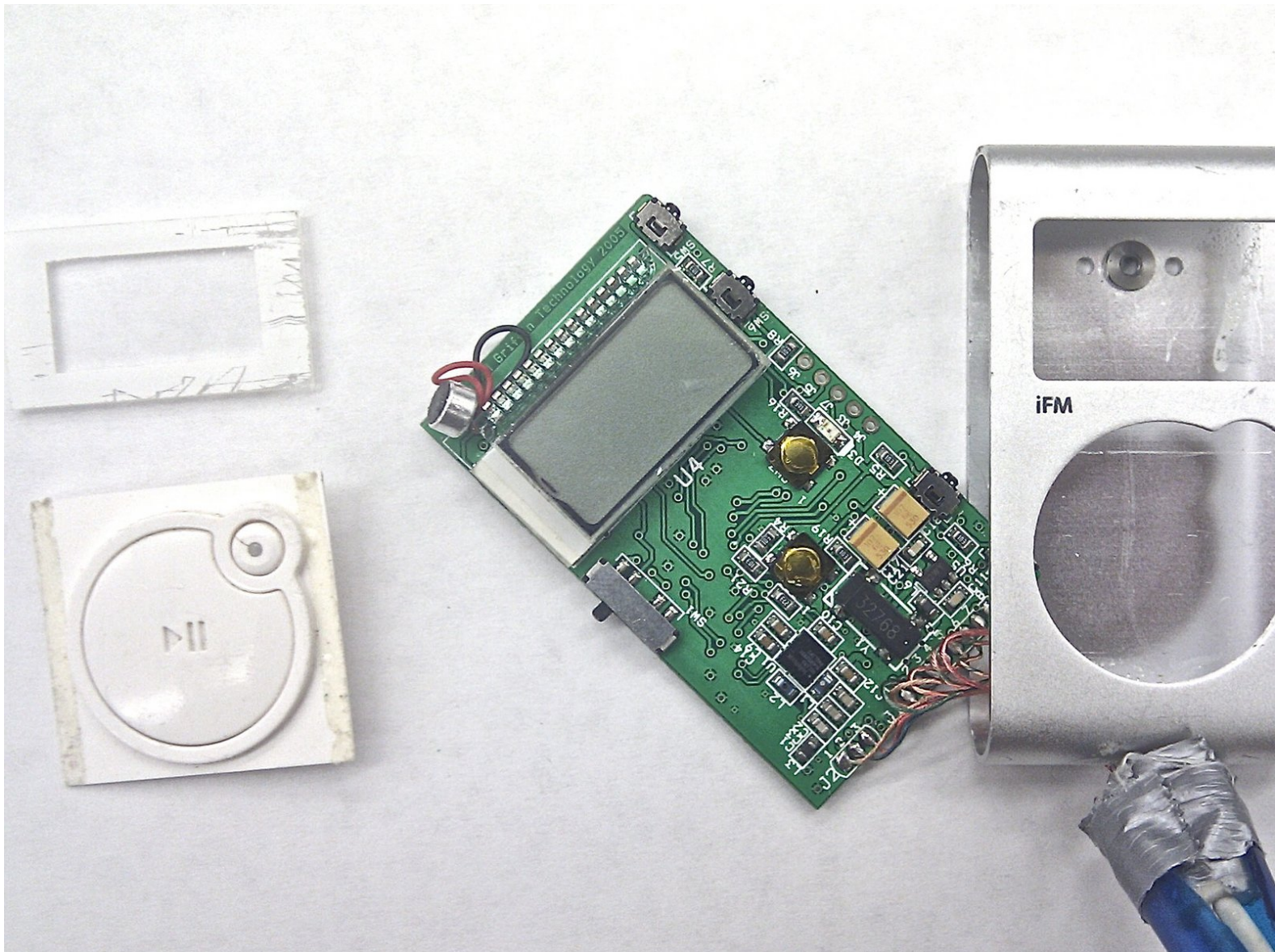




# Disassembling Griffin iFM 4027 LCD Screen Cover

This guide will teach the user how to remove the LCD screen cover.

Written By: Alexander



---

## INTRODUCTION

The LCD screen cover is necessary for protection of the actual LCD screen. In order for the removal of the LCD screen various prerequisite steps are required including the removal of the side panels, and the central button.

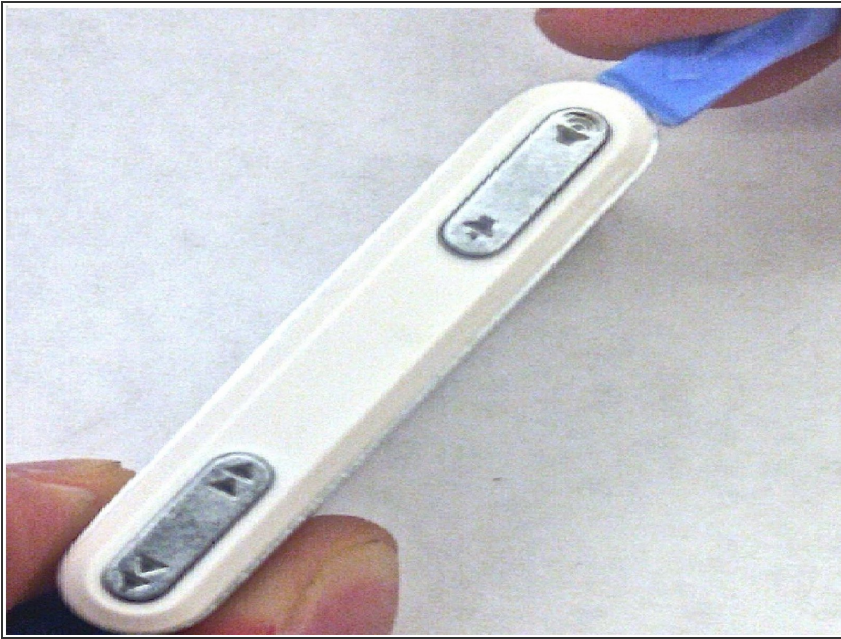


### TOOLS:

- [iFixit Opening Tools](#) (1)
-

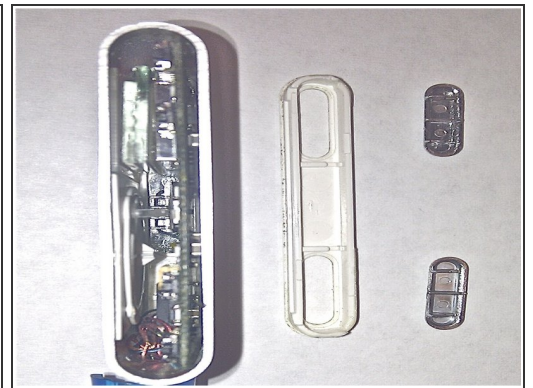


## Step 1 — Disassembling Griffin iFM 4027 - Right Side Panel ( Screen Side Up )



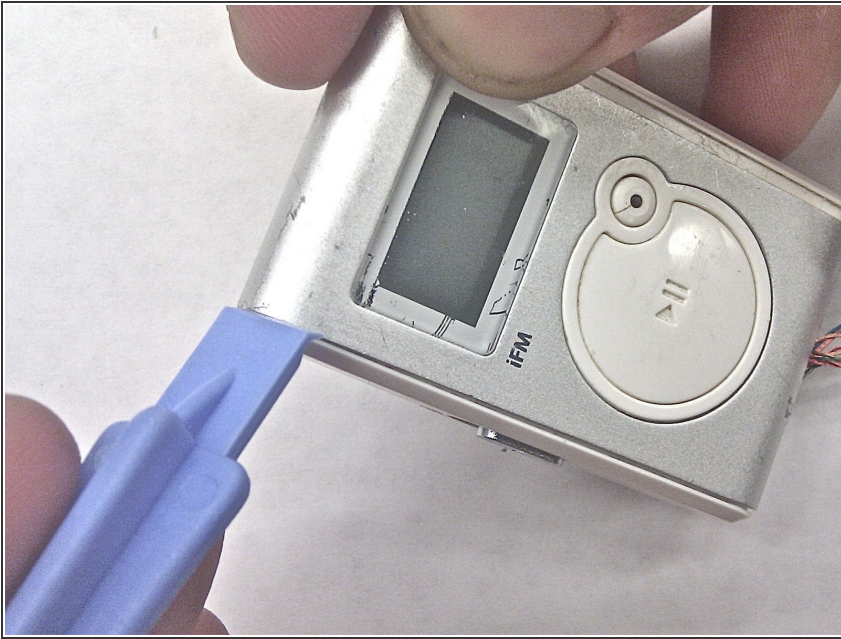
- Use the plastic opening tool.
- Lodge the tip into the corner of the device; Applying pressure upward, allowing the panel to be released.

## Step 2



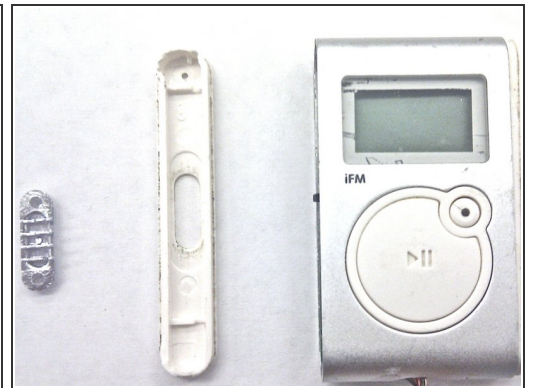
- The side panel can now be detached using your fingers.
- The buttons can be dislodged by turning the panel over and shaking it, if necessary.

### Step 3 — Left Side Panel (Screen Side Up)



- Lodge the tip of the plastic opening tool into the top arc of the front panel. Apply a little force to cause the panel to detach.

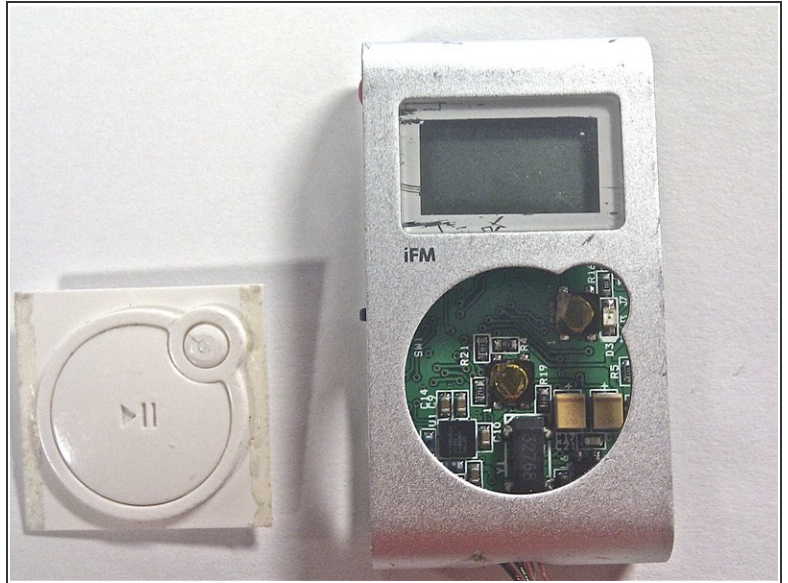
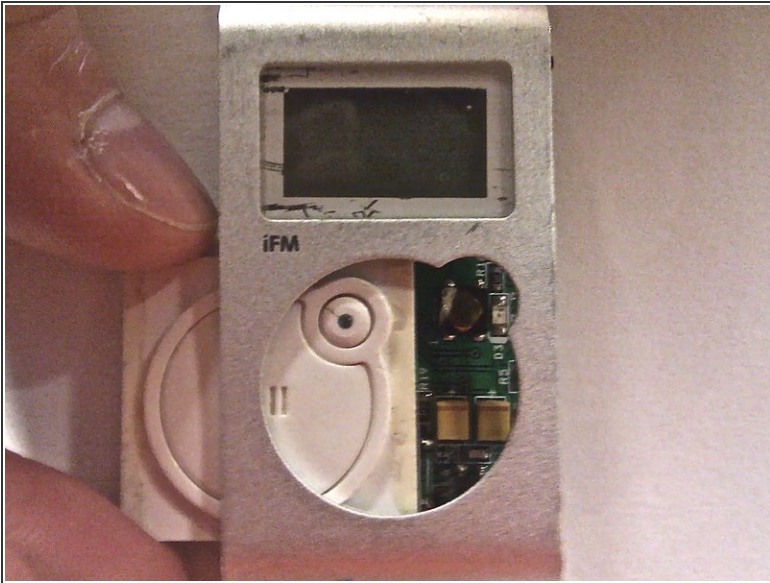
### Step 4



- Slide the blue opening tool along the seam applying force to continue detaching the side panel.
- Remove the button from the side panel.

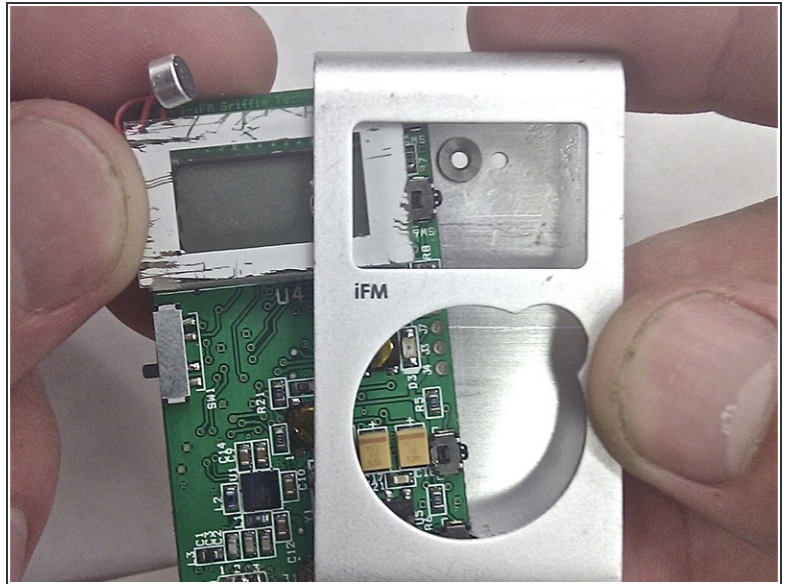
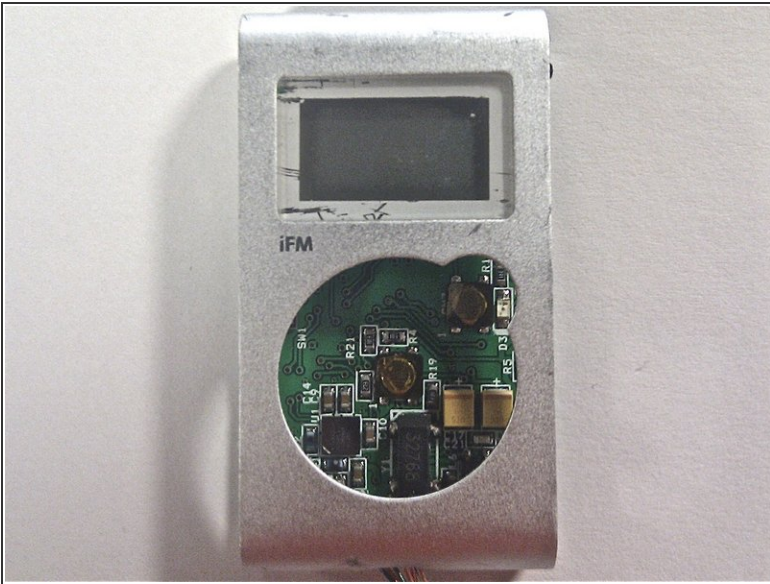


## Step 5 — Central Button



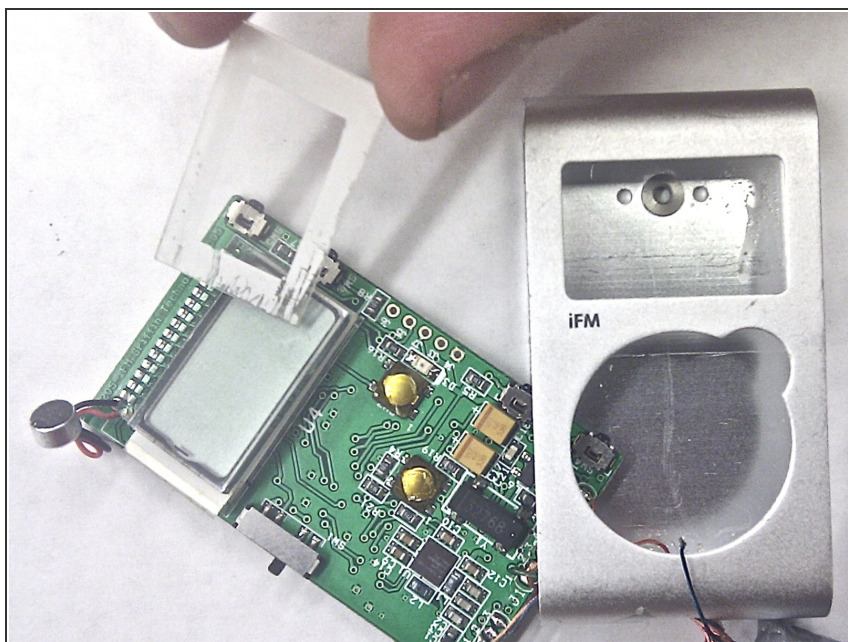
- The central button can easily be removed by using your fingers or tweezers to push the button out towards the left panel.

## Step 6 — LCD Screen Cover



- Carefully remove the circuit board/LCD component from the device by pulling it towards the left open panel.

## Step 7



- The screen cover can be easily lifted and removed from the LCD screen.

After disassembly, the device components should look similar to that which is depicted in the cover image (top right of page).