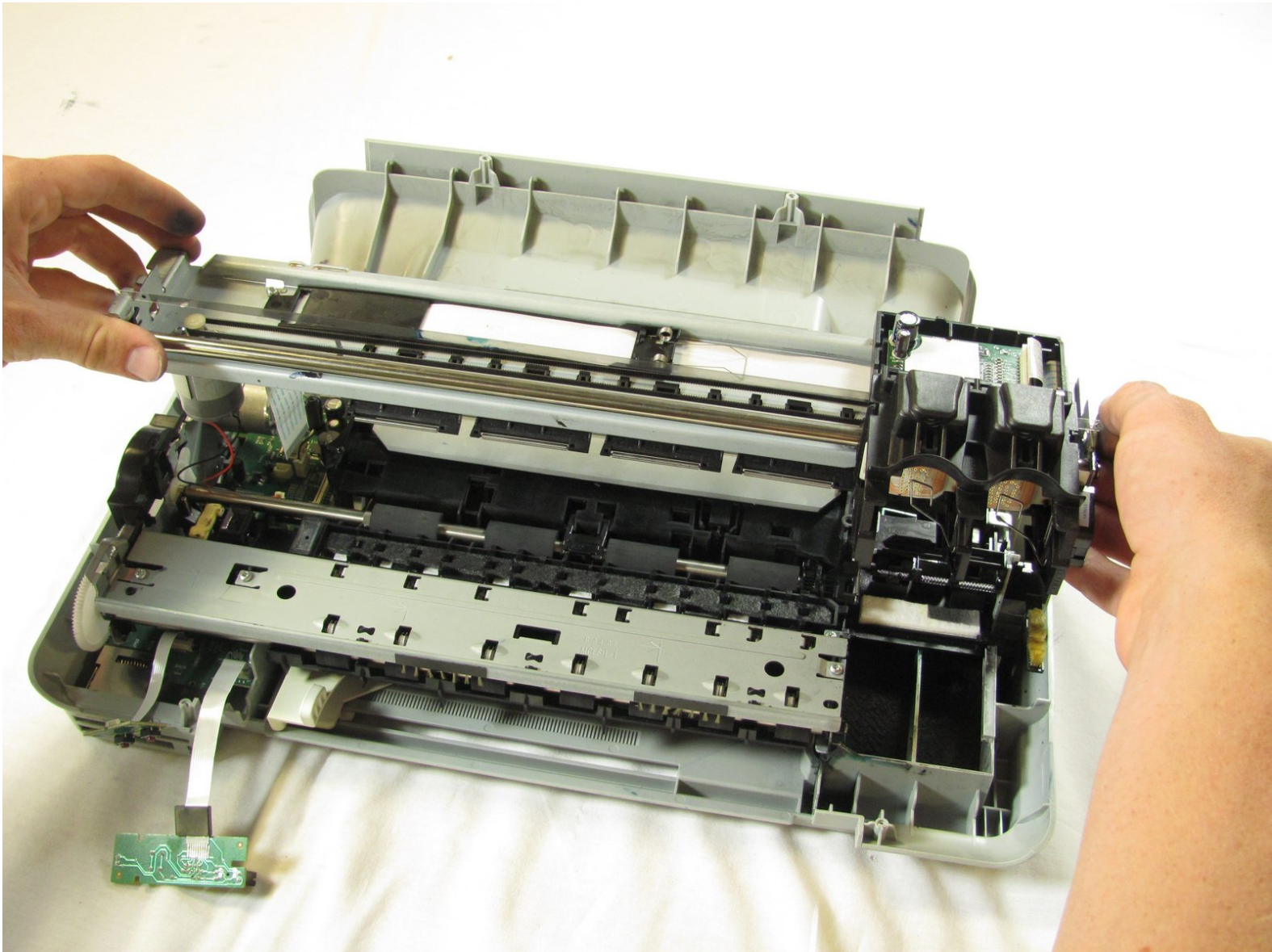




Disassembling HP Photosmart c3180 Ink Cartridge Track

Replacing the drive motor of for the ink cartridge carriage.

Written By: Jim






TOOLS:

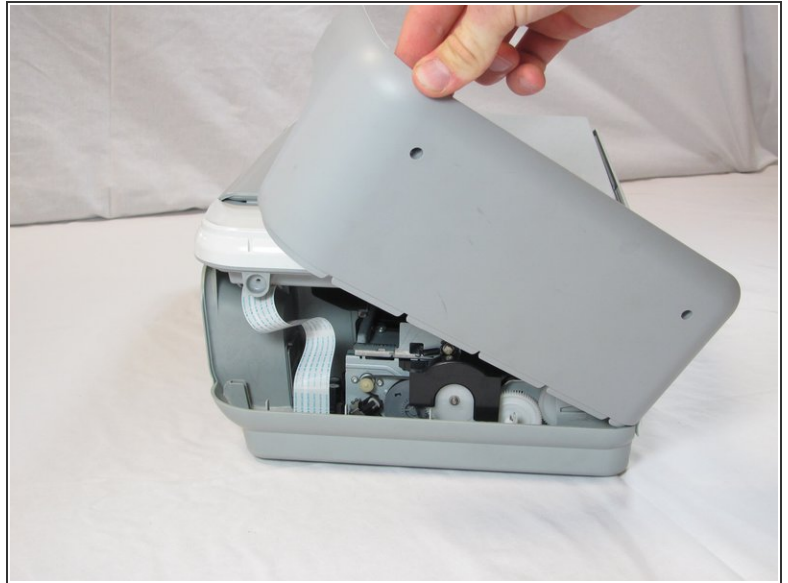
- [Spudger](#) (1)
 - [T10 Torx Screwdriver](#) (1)
-

Step 1 — Top Panel



-  Before disassembling your printer, be sure that the printer has been unplugged.
- Rotate the printer 90 degrees counter clockwise so that the side panel next to control panel is facing you.
- Remove the two T10 12mm Torx screws from the left side panel.

Step 2



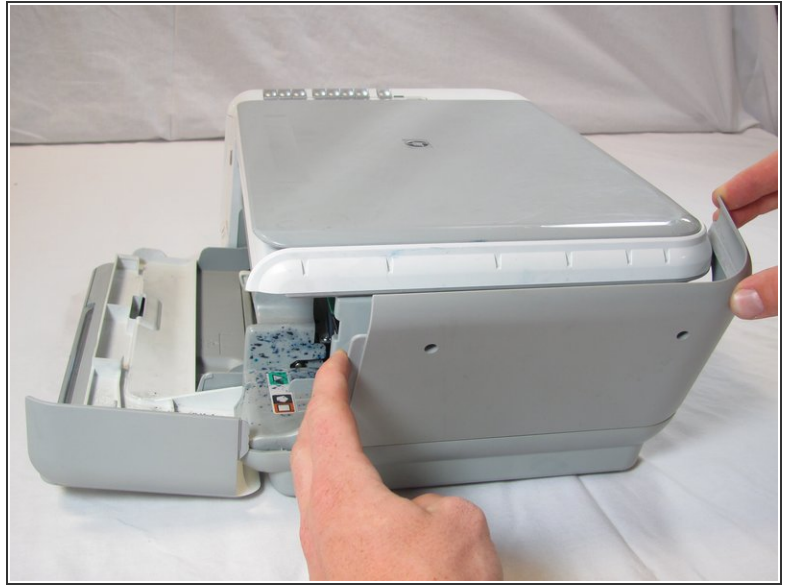
- Firmly pull the the back of the side panel until it separates from the body of the printer.
- Rotate the side panel upwards while pulling it towards yourself to remove the panel.

Step 3



- Rotate the printer 90 degrees clockwise.
- Grasp the paper tray and rotate it down.
- Insert your fingers into the slot in the printer door and pull to rotate the gate down.

Step 4



- Rotate the printer 90 degrees clockwise.
- Remove the two T10 12 mm Torx screws.
- Grasp both sides of the side panel and pull it forward to remove the panel.

Step 5



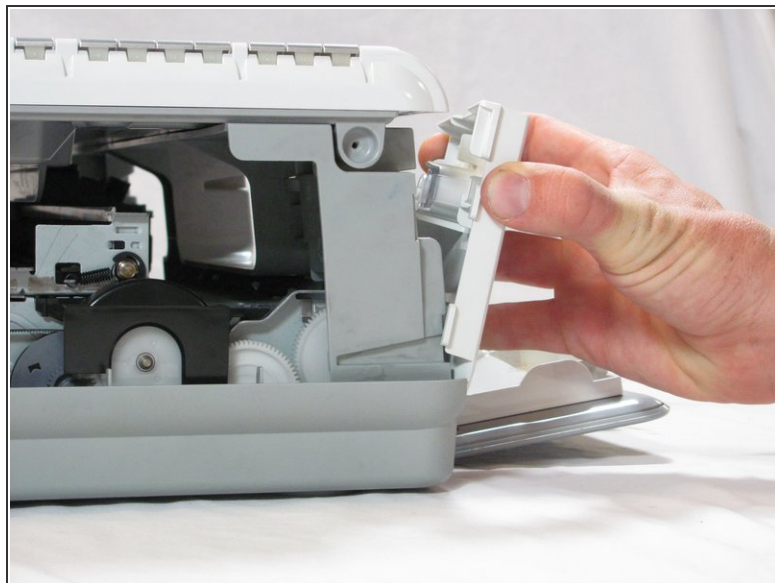
- Rotate the printer 90 degrees counter clockwise.
- Lift the scanner lid to expose the scanner glass.

Step 6



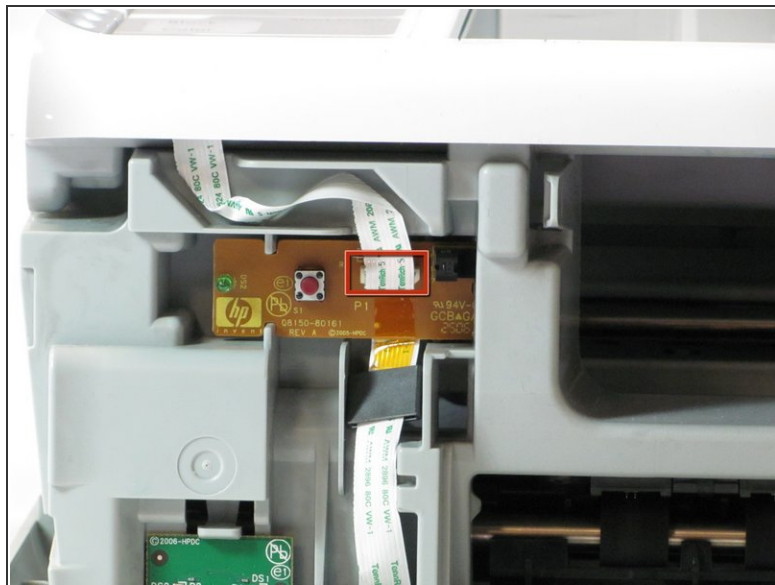
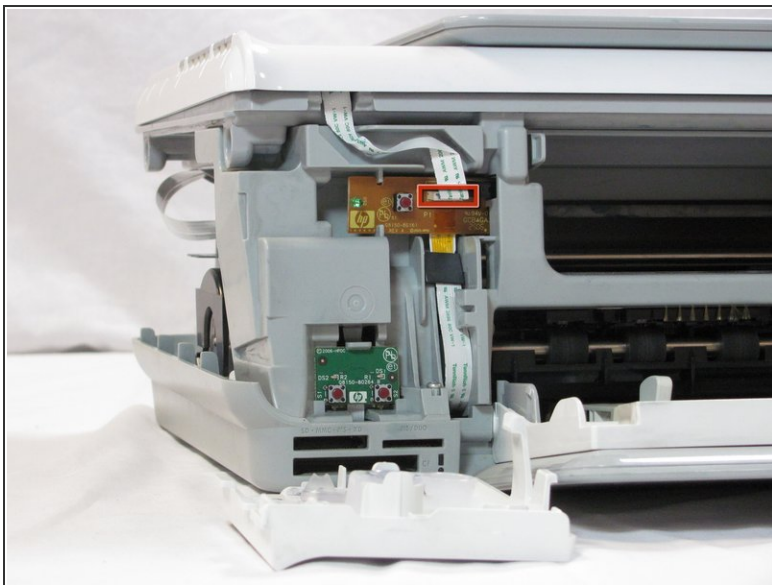
- Remove the two T10 12 mm Torx screws.
- ⚠ Do not attempt to lift the top panel off the printer yet because it is still connected to the printer body by a cable.

Step 7



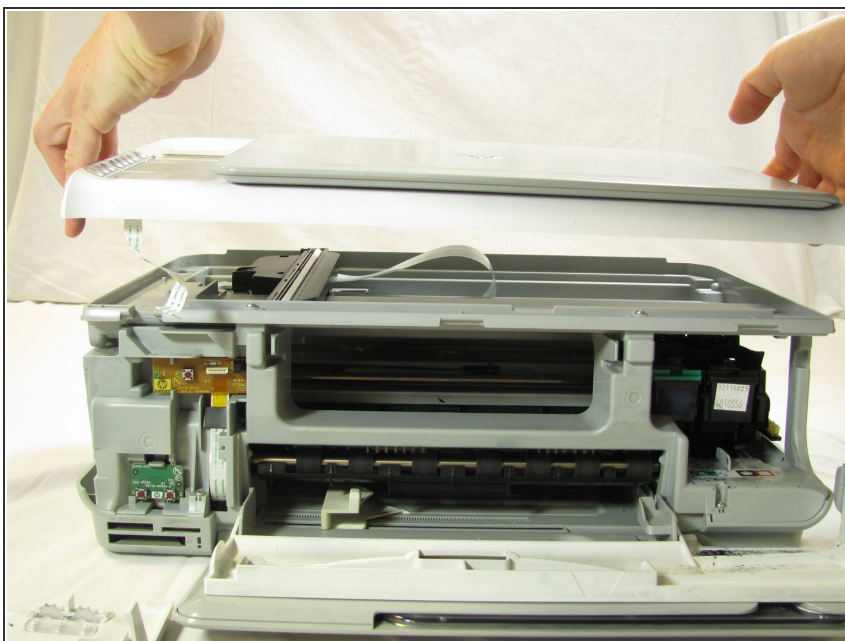
- Rotate the printer 90 degrees counter clockwise.
- Inside the printer is a small white tab. Press it inward with a spudger until a pop is heard.
- Remove the front panel by grasping its front and pulling away from the printer.

Step 8



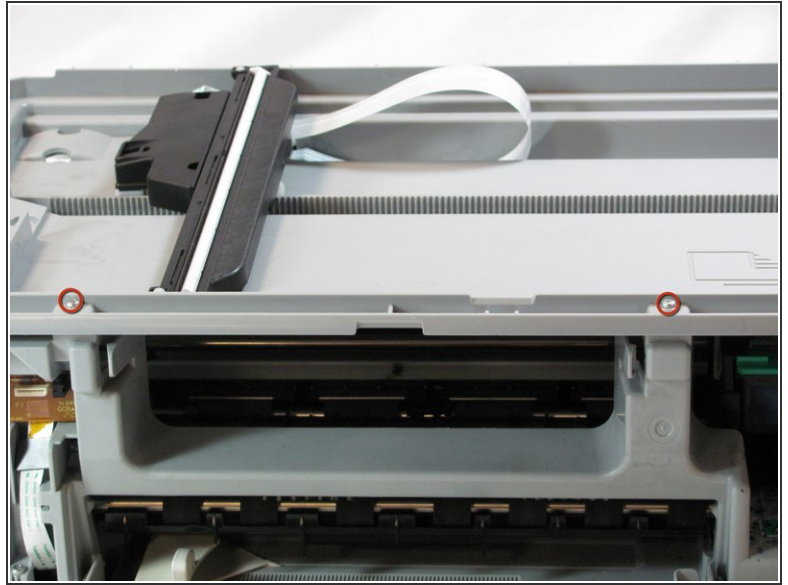
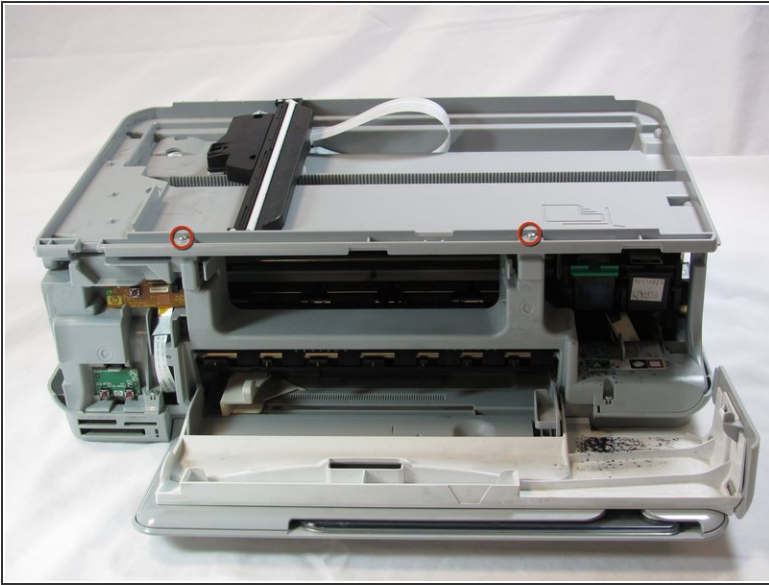
- Rotate the printer 90 degrees clockwise.
- Remove the cable connecting the top panel of the printer to the power button assembly.

Step 9



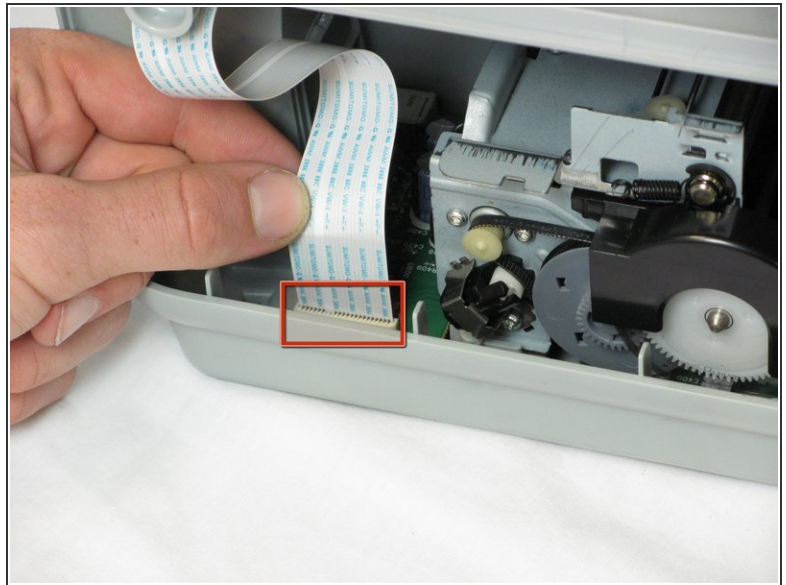
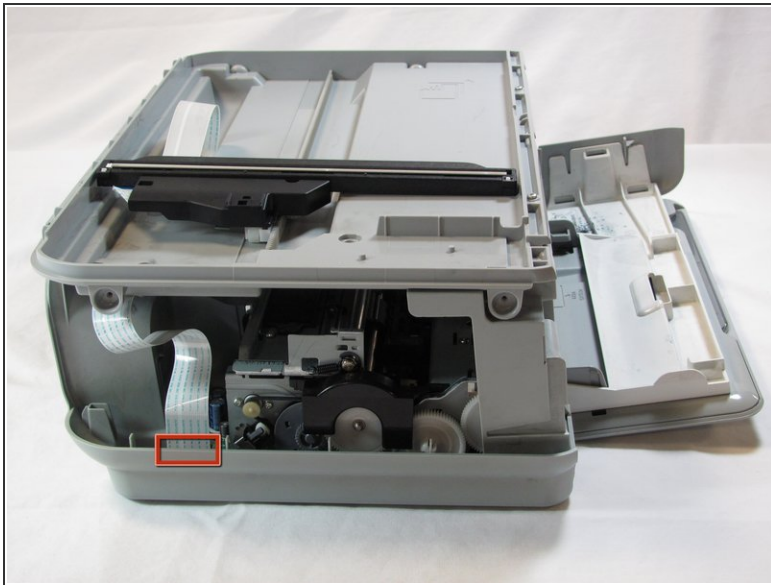
- Carefully lift the top panel of the printer away from the printer body.

Step 10 — Disassembling HP Photosmart c3180 Ink Cartridge Track



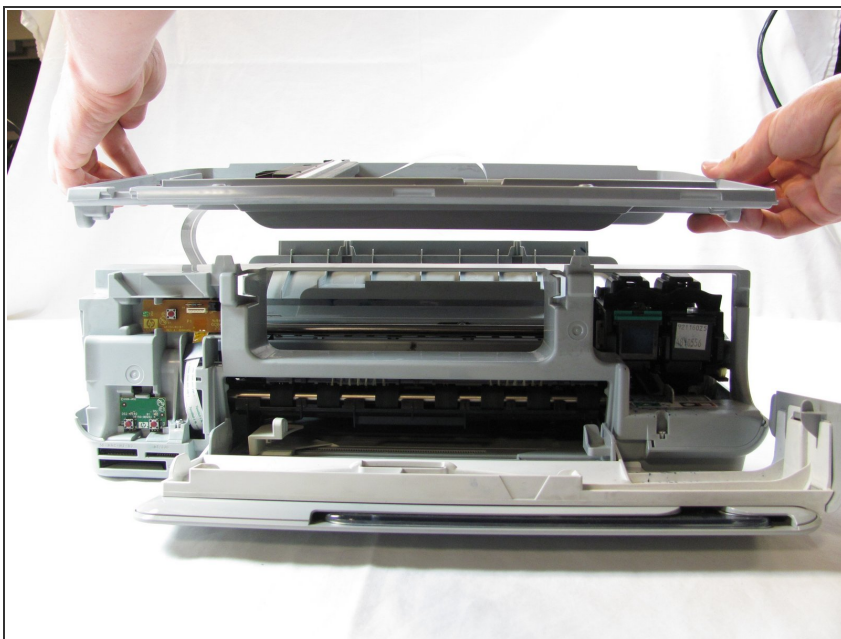
- Set aside the top panel of the printer.
- Remove the two T10 12 mm Torx screws from the top front of the printer

Step 11



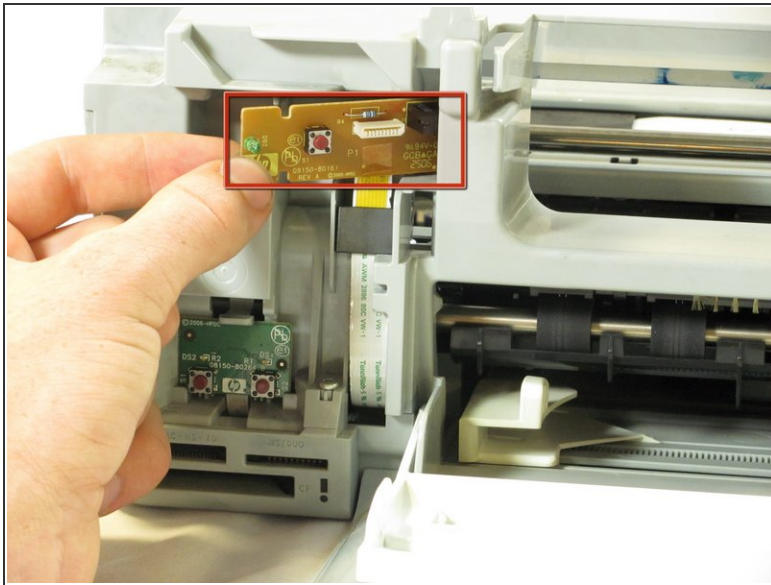
- Rotate the Printer 90 degrees counter clockwise.
 - Remove the scanner cable from the main circuit board.
- i** Grasp the bottom of the cable and pull straight up. Do not wiggle it from side to side or twist it as this can damage the connection.

Step 12



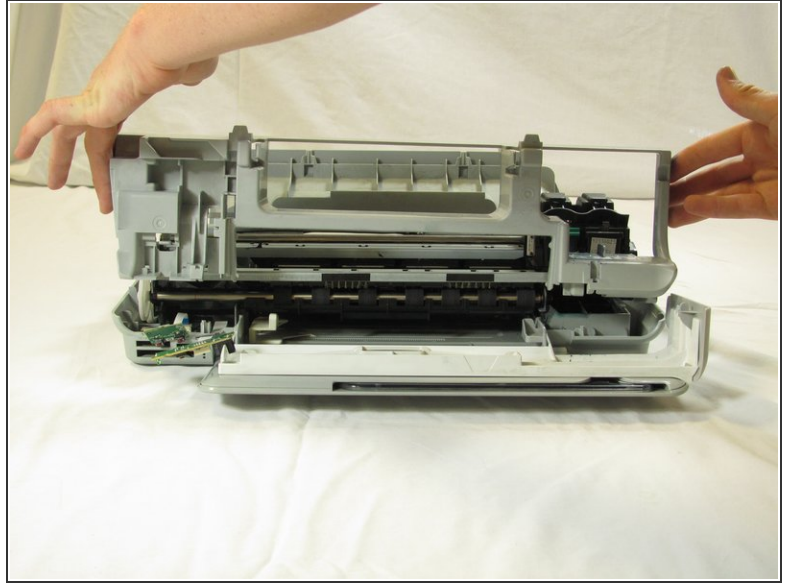
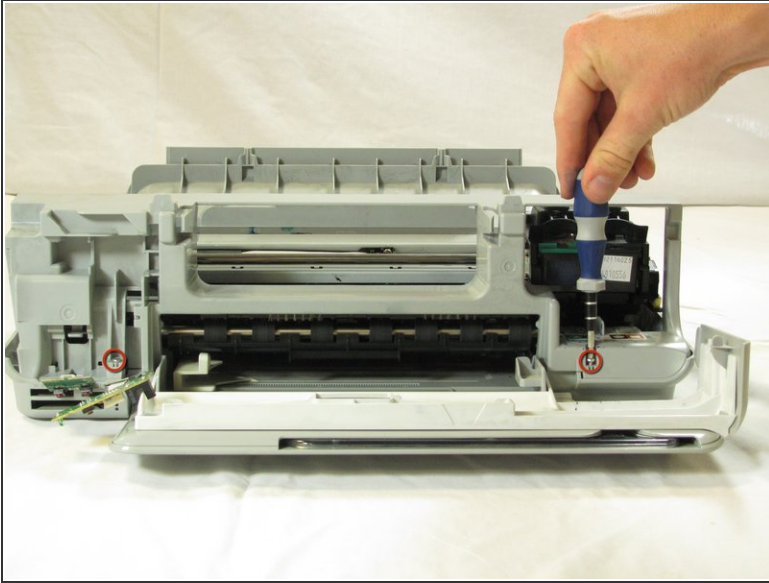
- Rotate the printer 90 degrees clockwise.
- Using both hands, lift the scanner tray from the body of the printer.

Step 13



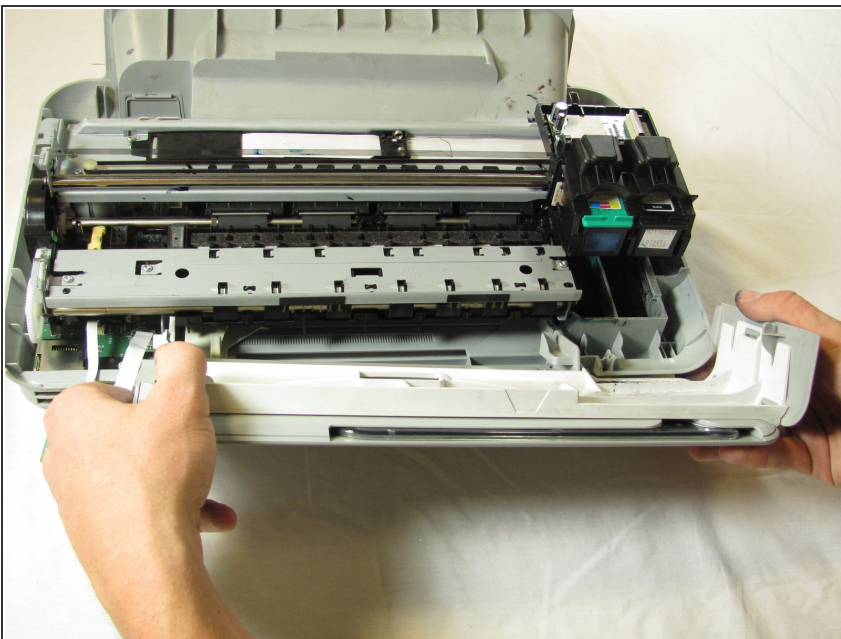
- Remove the power button circuit board from the support frame by pinching the left side, and pulling forward and to the left simultaneously.
 - Push up on the tab holding the secondary control circuit board with the spudger and pull it forward to remove it.
- ⚠ Be careful not to pull too hard on the cable connecting the power button control circuit board and the secondary control circuit board to the main circuit board

Step 14



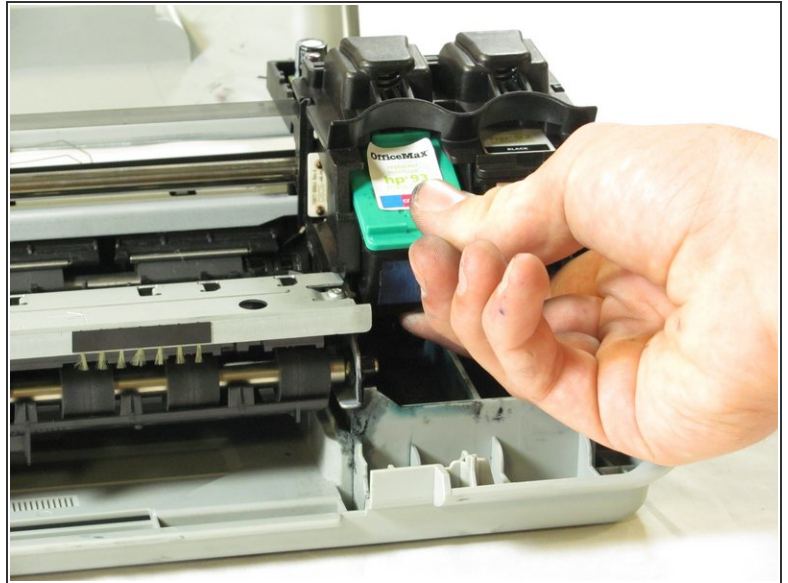
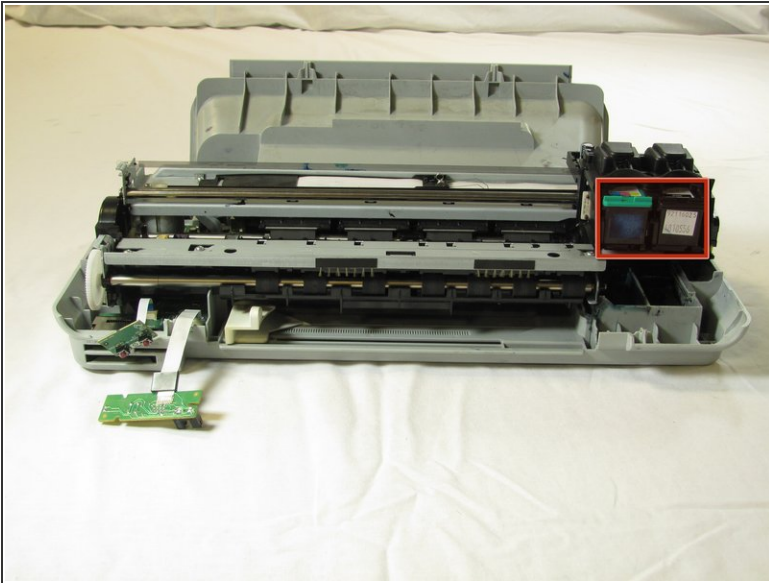
- Remove the two T10 12 mm Torx screws.
- Lift the support frame off of the printer body with both hands.

Step 15



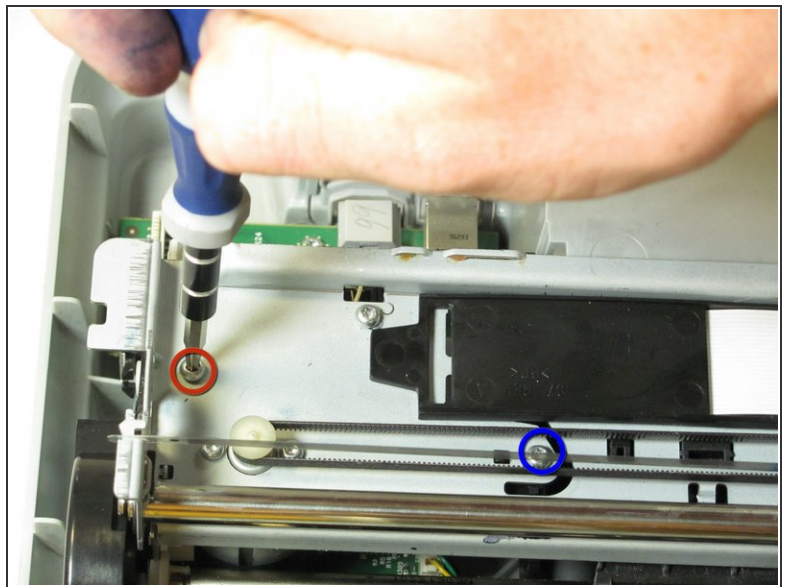
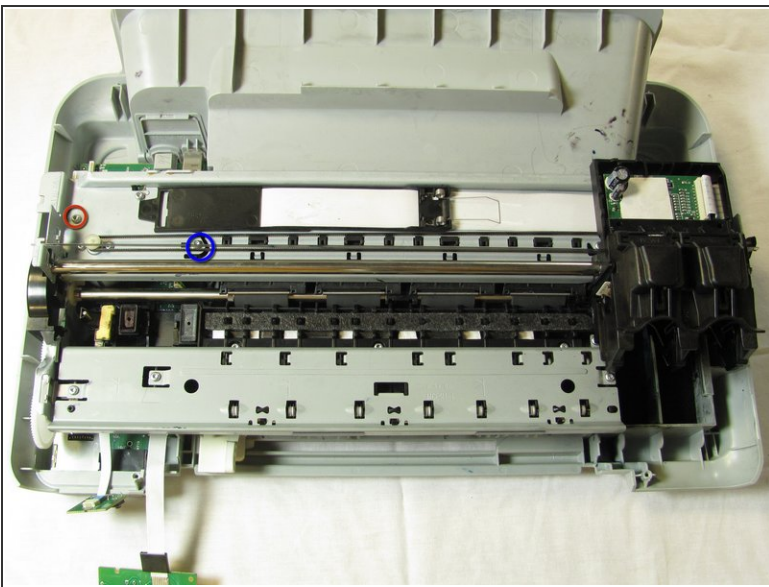
- Remove the printer door and paper tray by putting them in the closed position and not laying flat then rotating them upwards lift the left side up.

Step 16



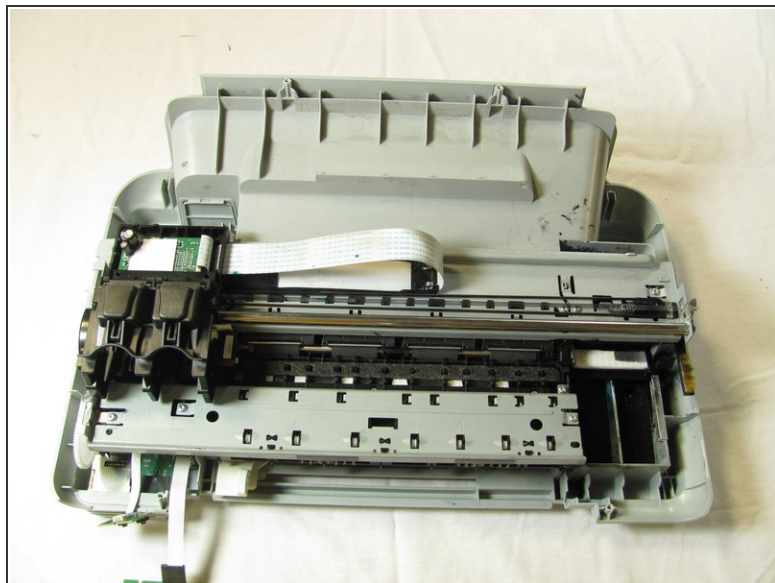
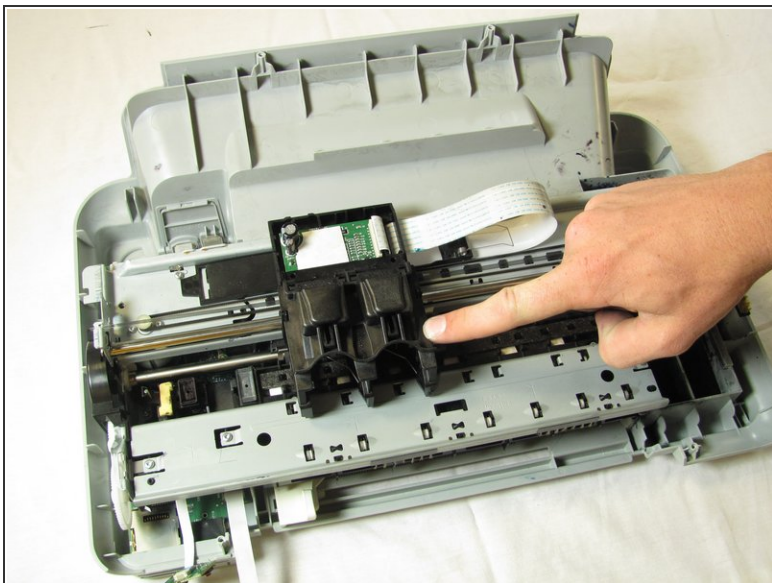
- Remove both of the ink cartridges by grabbing the front of the ink cartridge and pulling down.
- ⓘ Make sure that the printer carriage is pushed all the way to the right.

Step 17



- Remove the T10 6 mm Torx screw on the left side of the track assembly.
- Remove the T10 12 mm Torx screw on the left side of the track assembly.

Step 18



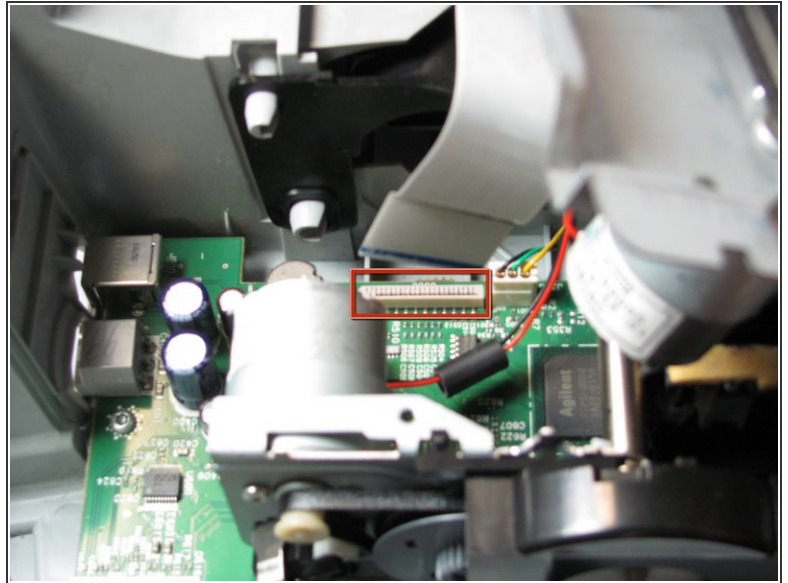
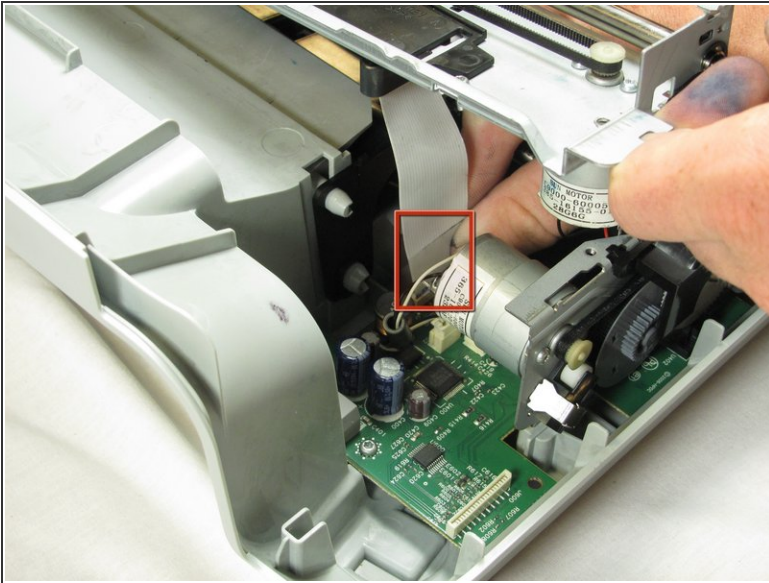
- Gently push the ink cartridge carriage to the left side of the printer.

Step 19



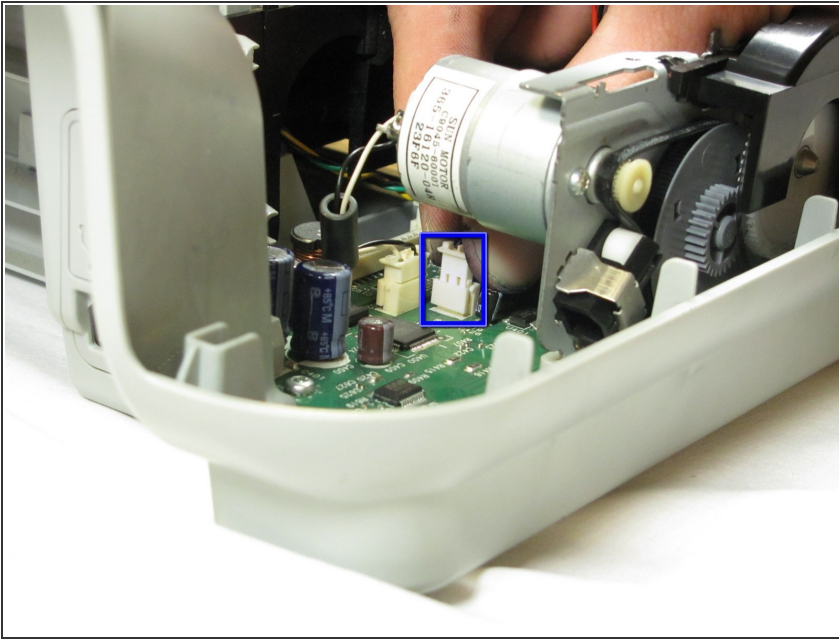
- Remove the two T10 12 mm Torx screws.
- Remove the two T10 6 mm Torx screws.

Step 20



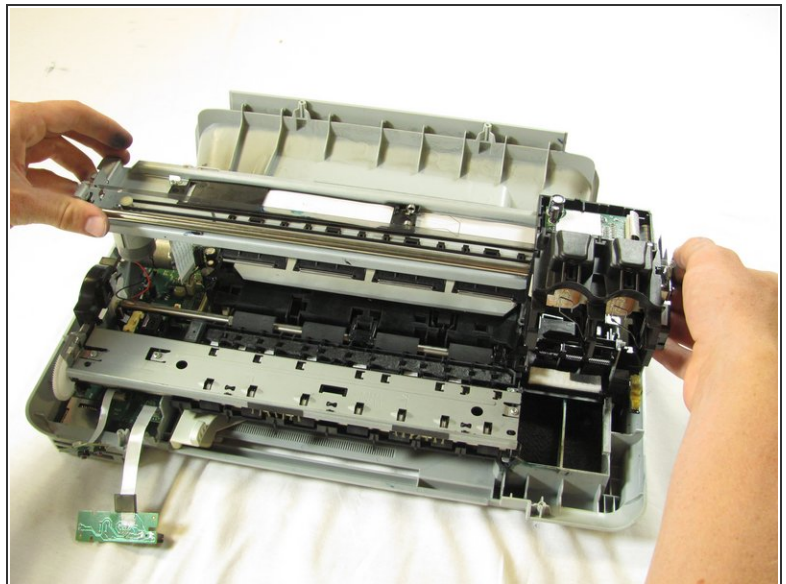
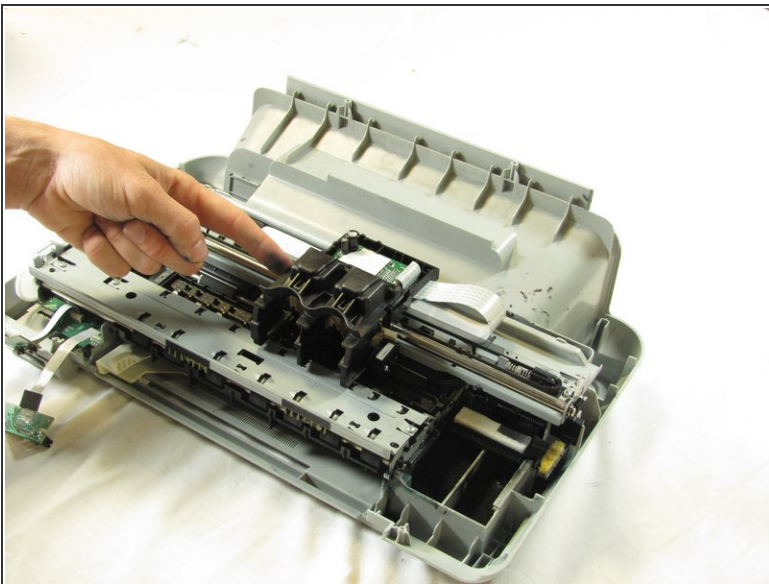
- Rotate the printer 90 degrees counter clockwise.
 - Remove the cable connecting the ink cartridge carriage to the main circuit board.
- ⚠ Pull straight up to free the cable from the main circuit board. Do not twist or wiggle the cable as doing so can damage it.
- ⓘ You may need to lift the carriage up with one hand in order to reach the cable with the free hand as shown.

Step 21



- Carefully remove the connector holding the drive motor wires to the main circuit board.

Step 22



- Slide the ink cartridge carriage all the way to the right side of the printer.
- Using both hands, carefully lift the ink cartridge track off of the main body of the printer.

To reassemble your device, follow these instructions in reverse order.