



Disassembling IBM ThinkPad A30 Motherboard

This disassembly guide shows how to remove the components of the ThinkPad A30 in order to get to the motherboard.

Written By: Alan

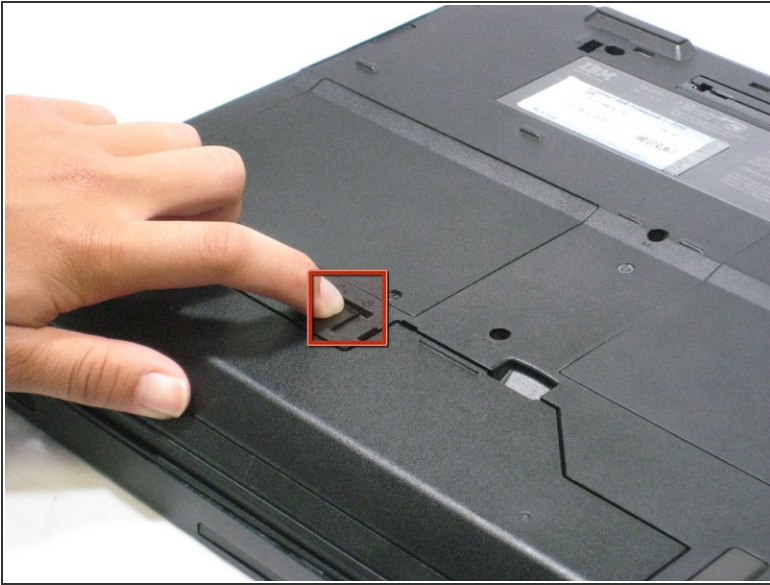




TOOLS:

- [Phillips #00 Screwdriver](#) (1)
 - [Phillips #1 Screwdriver](#) (1)
 - [iFixit Opening Tools](#) (1)
-

Step 1 — Battery



- ❗ Flip the ThinkPad over so that it is upside down.
- Slide the highlighted tab to the left.
- With your finger on the tab, remove the battery by lifting it upwards away from the laptop.

Step 2 — Hard Drive



- Remove the highlighted screw with a Phillips #1 screwdriver.
- Pull the hard drive out.

Step 3 — CD Drive



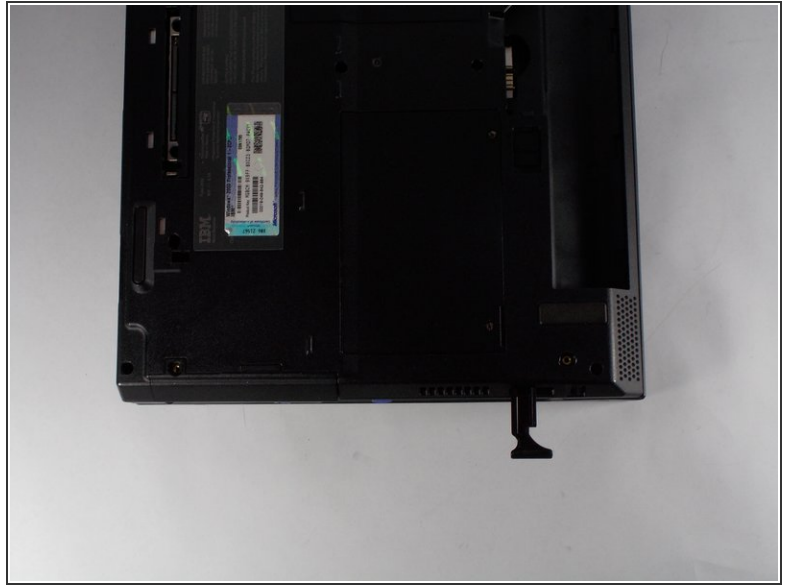
- Hold the laptop in the same orientation as the picture. Then, locate the switch immediately above and to the left of the drive.
- Slide the switch to the right. A black plastic tab will pop out.
- Pull the plastic tab to expose the CD drive.
- If there is a problem with your tab, whether it doesn't pop out or it doesn't expose the CD drive, please check the corresponding entry in the troubleshooting page.


Step 4



- Carefully pull the CD drive out from the laptop.

Step 5 — Floppy Disk Drive



-  Hold the Thinkpad as the picture shows.
- There is a switch located just above and to the right of the drive.
 - Slide the switch to the right. A small, black tab will pop out.

Step 6



- Pull the small black tab away from the computer to access the drive.
- Gently pull the drive out from the laptop.
- If there is a problem with your tab, whether it doesn't pop out or it doesn't expose the floppy drive, please check the corresponding entry in the troubleshooting page.

Step 7 — Upper Case



- ⓘ Make sure the laptop is upside down and oriented in the direction shown.
- Remove the six 16.7mm screws inside the circled holes.

Step 8



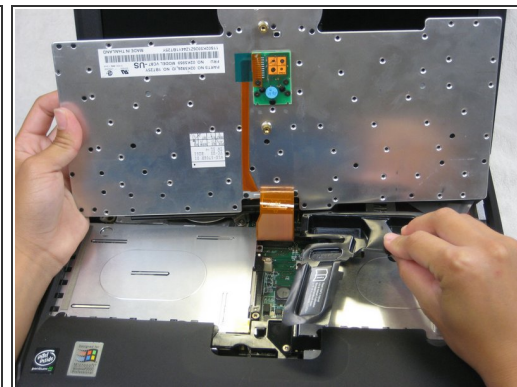
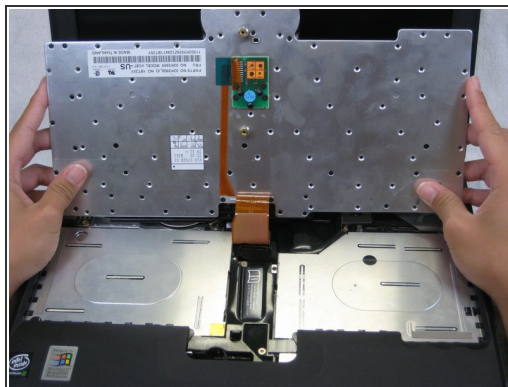
- Rotate the ThinkPad so that the hard drive bay is facing you.
- Remove the black cover to reveal a 14.8mm screw.
- Remove the uncovered screw with a Phillips #0 screwdriver.


Step 9



- ① Flip the ThinkPad over and open the LCD panel.
- Pry apart the keyboard with a plastic opening tool or with your fingers.

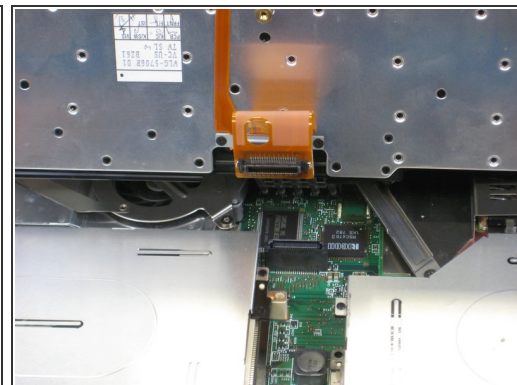
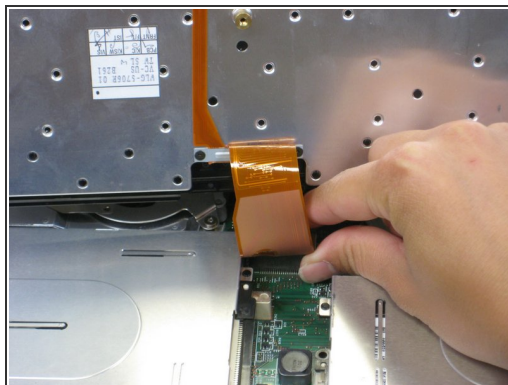
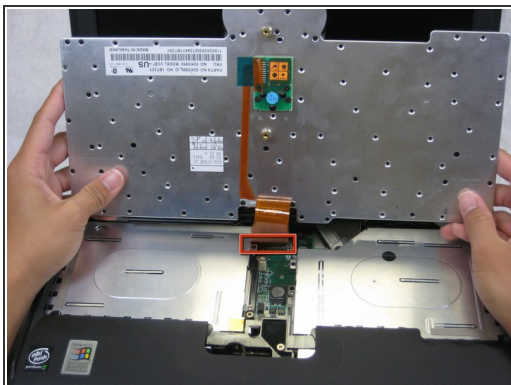
Step 10



 Be careful not to pull out the keyboard carelessly; there is a connector underneath it!

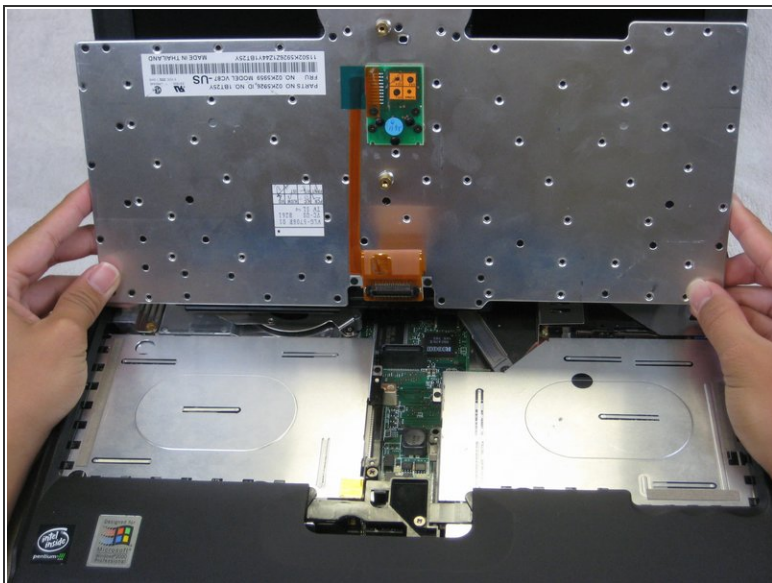
- Lift the front end of the keyboard as shown.
- Using your fingers, remove the black film cover.

Step 11



- Locate the connector attached to the motherboard.
- Disconnect the ribbon cable by removing the connector.

Step 12



- Lift and remove the keyboard.
- Remove the two 5.6mm screws.
- Remove the 16.7mm screw.

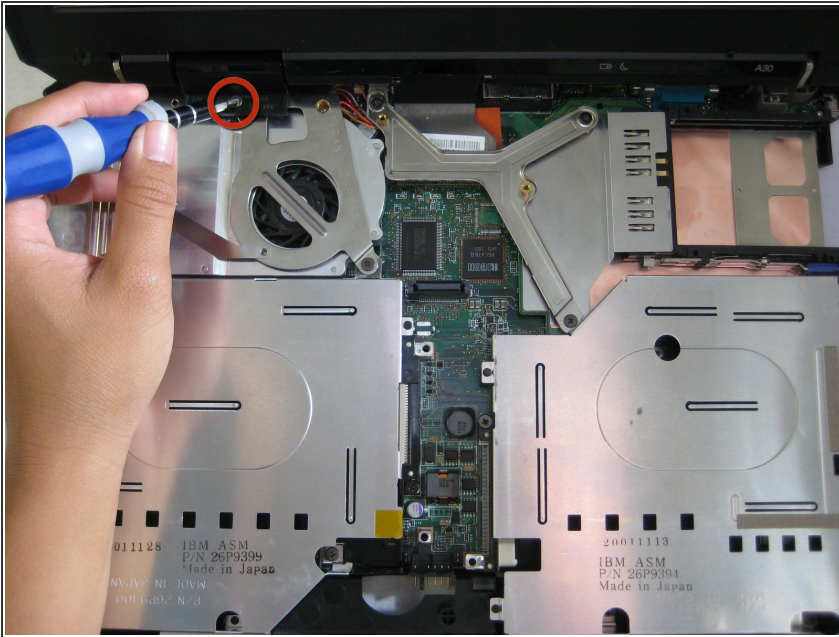
Step 13



⚠ You will need to use a little force. Be wary of the tabs.

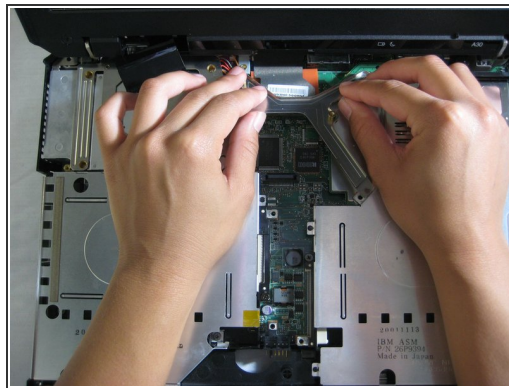
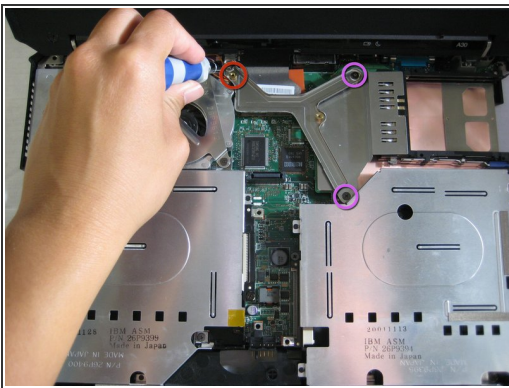
- Pry off the upper case with your hands.

Step 14 — Display Assembly



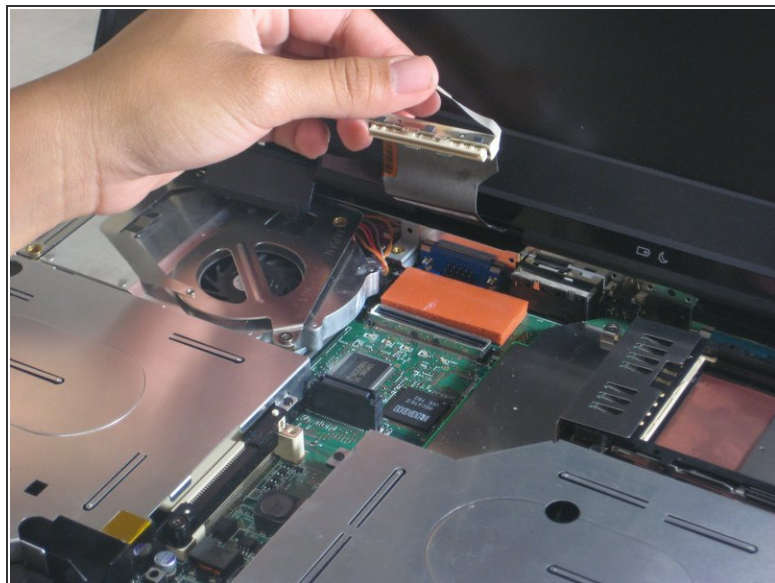
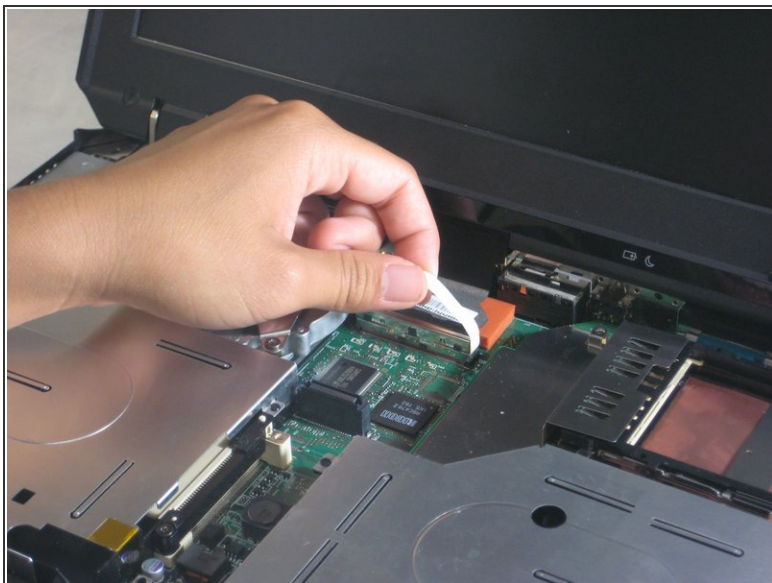
- Remove the 5.6mm screw that holds the LCD to the upper case.

Step 15



- Remove the 5.6mm screw on the left side of the three-pronged connector.
- Remove the other two 16.7mm screws.
- Lift and remove connector.

Step 16



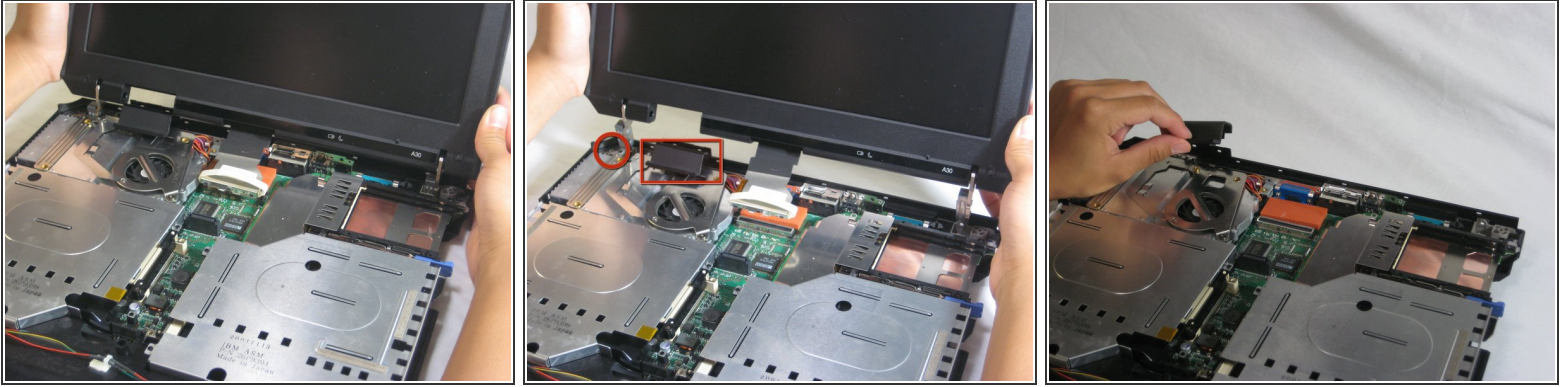
- Pull out the white tab connecting the LCD to the motherboard.

Step 17



- Turn the laptop so that the back is facing you.
- Remove the four 5.6mm long screws.

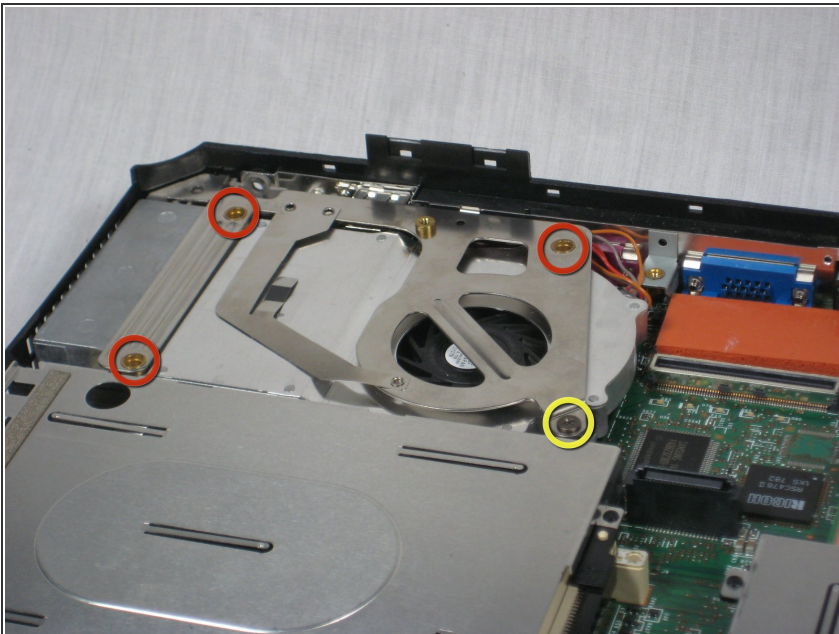
Step 18



i Place the laptop so that the LCD is facing you again.

- Gently lift the LCD monitor up and out.
- Remove the black plastic tab.

Step 19 — CPU Fan

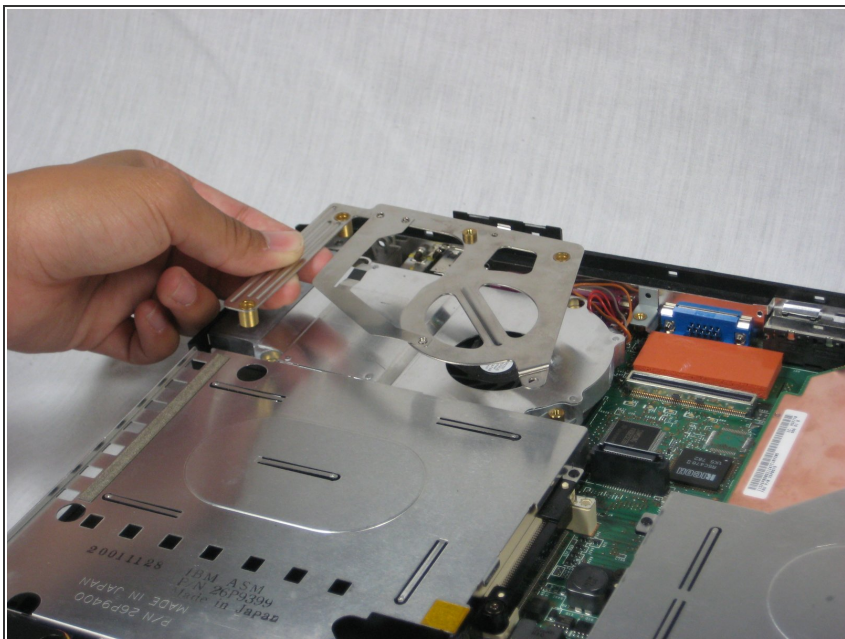


- Locate the 4 screws that will need to be removed.

i One screw (yellow) is observable. The three other screws (red) are below the heatsink bracket.

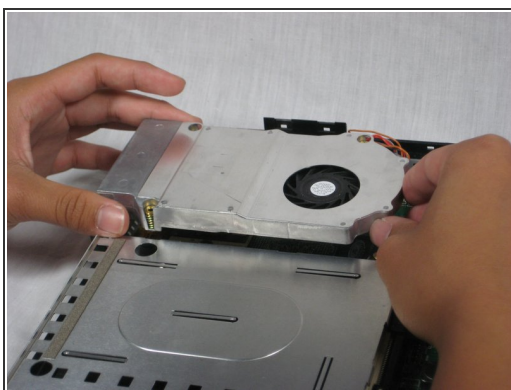
- Remove the 5.6mm (yellow) and three 16.1mm (red) screws.

Step 20



- Lift the heatsink bracket up.

Step 21



⚠ Be careful not to pull too hard! There is a cable attached to the fan!

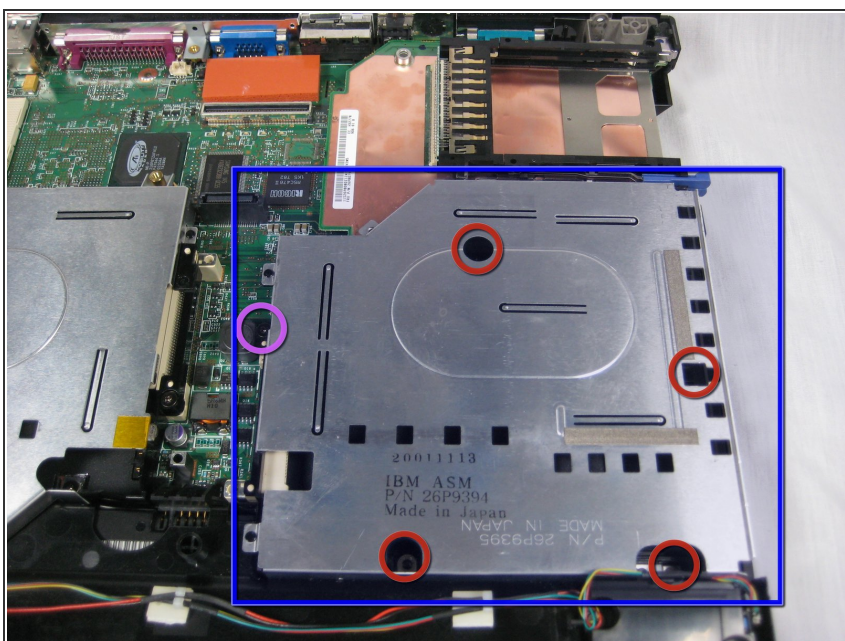
- Lift the fan/heatsink assembly up.
- Locate the fan power cable and pull upwards near the connector.
- Remove the fan/heatsink assembly.

Step 22 — CPU



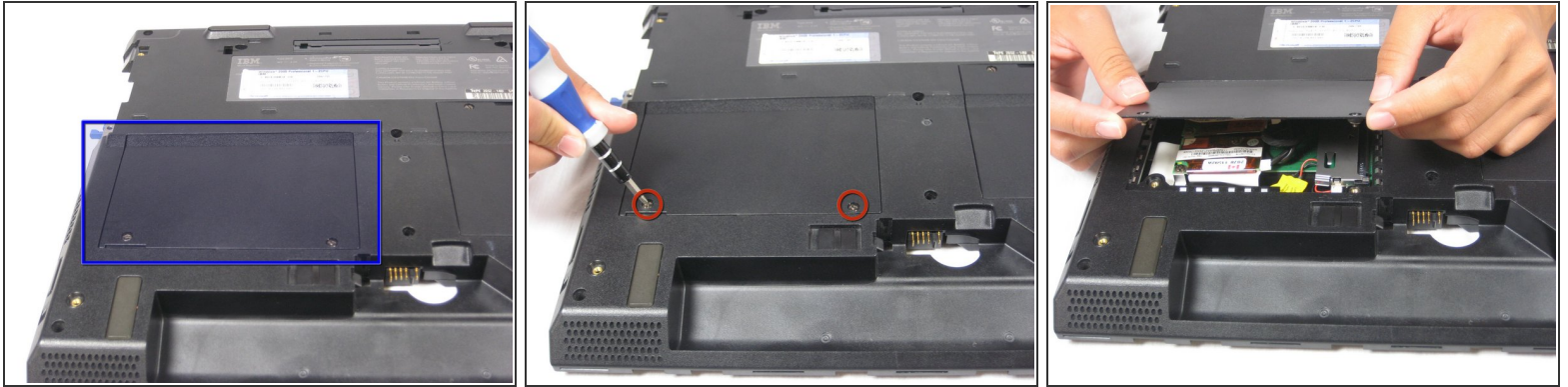
- Use a flathead to turn the screw 180 degrees.
- Remove the CPU by lifting it upwards.
- ⓘ If the CPU is reusable, place it in an antistatic bag and away from moisture.

Step 23 — Motherboard



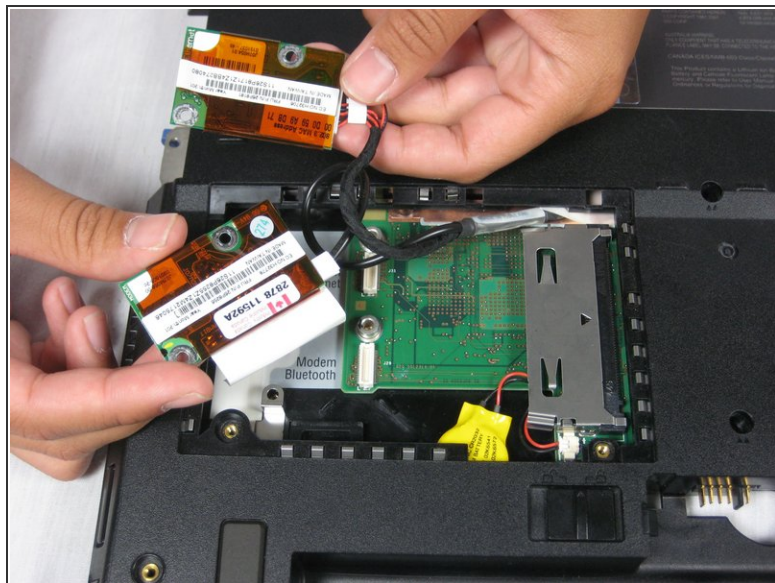
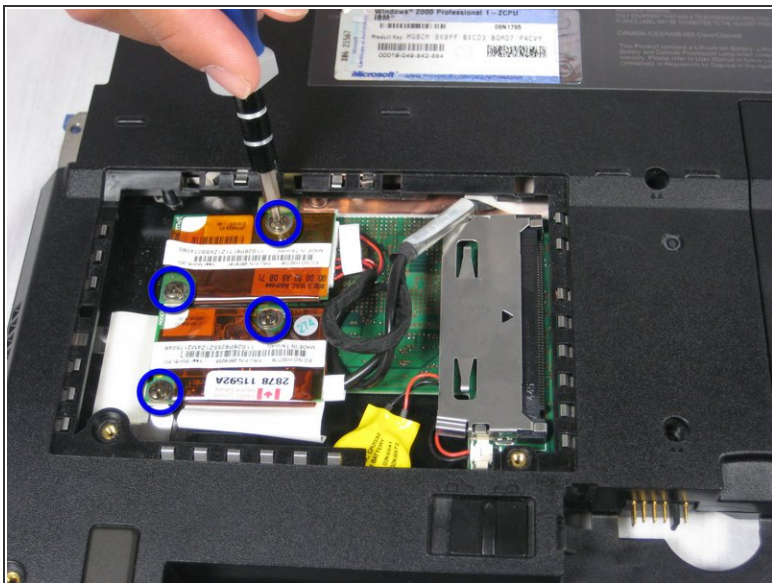
- Locate the floppy drive bay.
- Remove the four 5.6mm screws.
- Remove the 16mm screw.

Step 24



- Turn the laptop over so that the battery is towards you.
- Locate the modem and ethernet card bay.
- Remove the two 5.3mm cover screws.
- Gently lift the cover.

Step 25

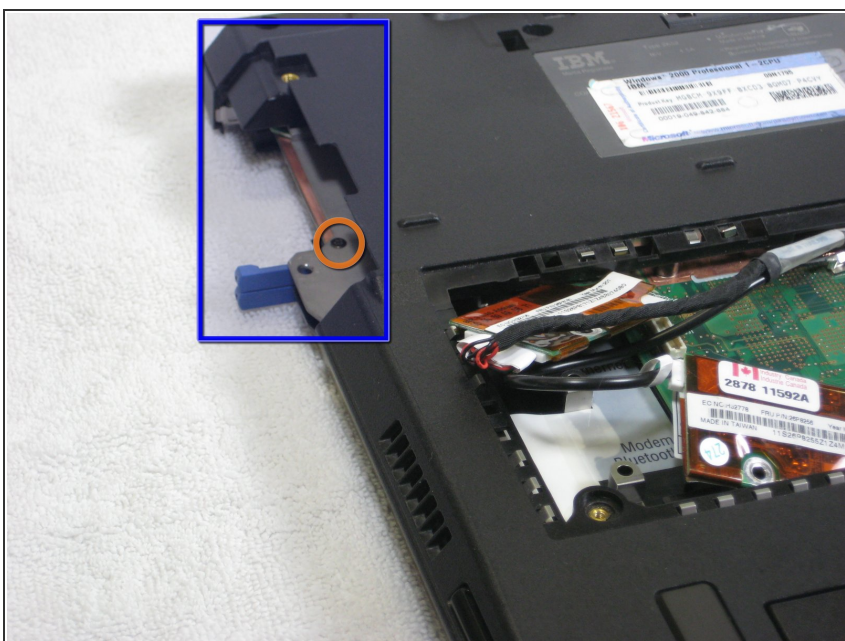


- Remove the four 9.1mm screws attached to the modem and ethernet cards.

⚠ When lifting the cards, be careful not to rip out the cables!

- Gently lift the modem and ethernet cards.

Step 26



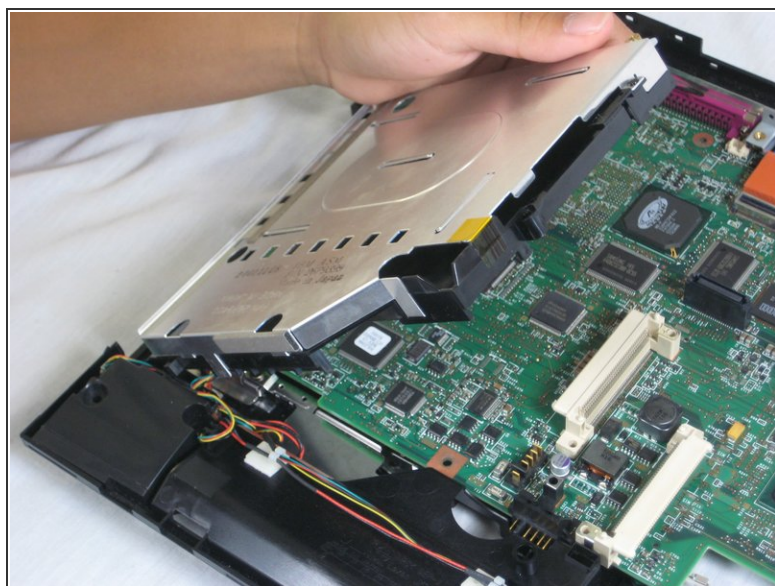
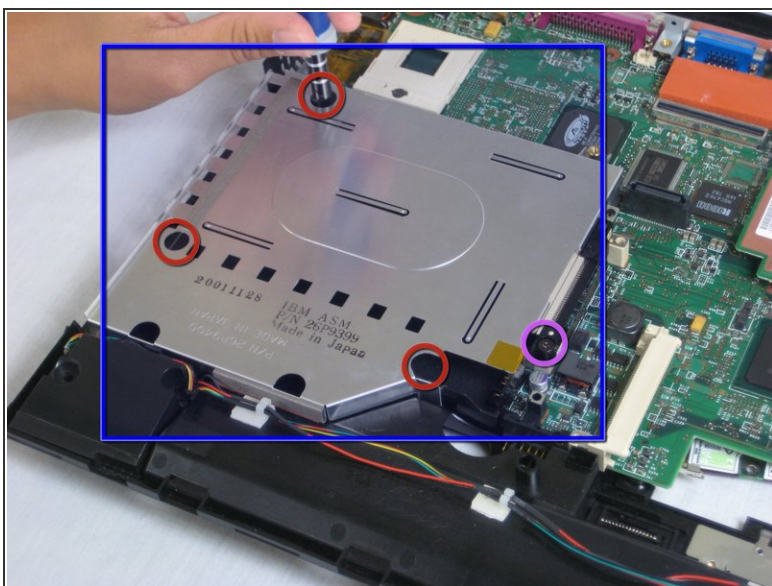
- Locate the hard drive slot.
- Remove the 8.8mm screw with a Phillips #0 screwdriver.

Step 27



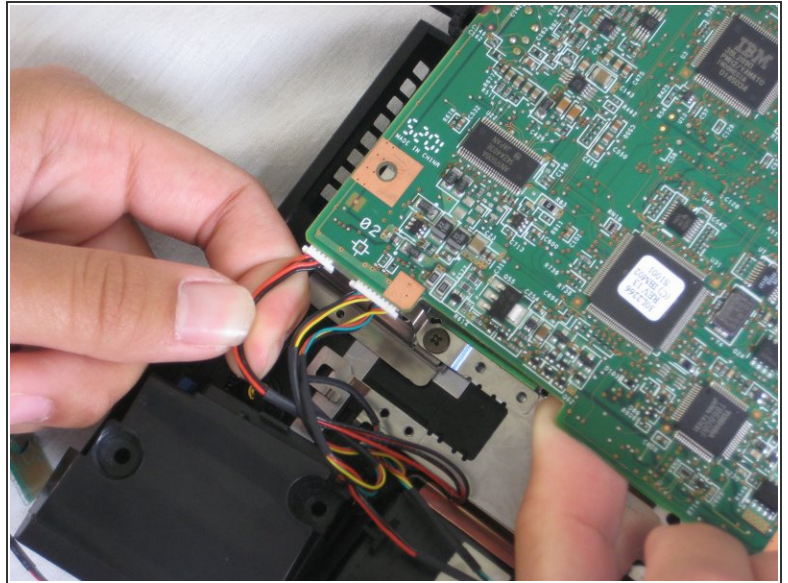
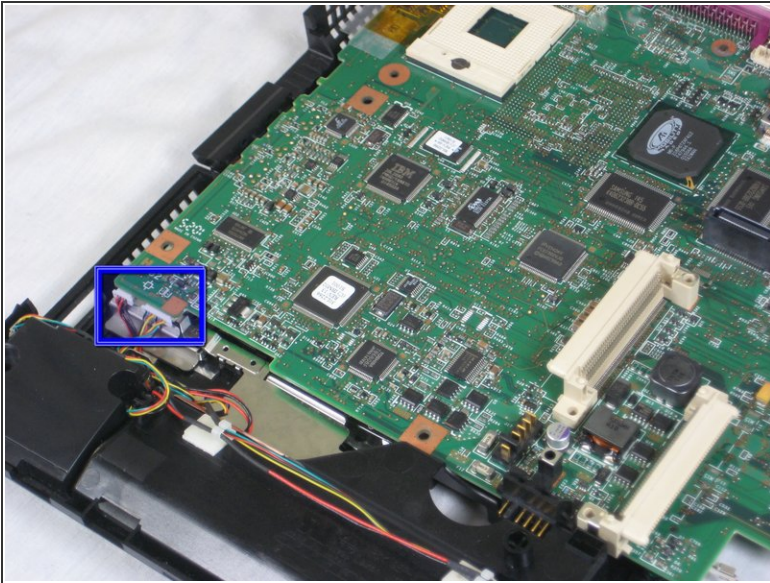
- Turn the laptop over again and orient it as shown.
- Lift the left side of the floppy disk bay and pull it out.
- ① The black lever will pop out.

Step 28



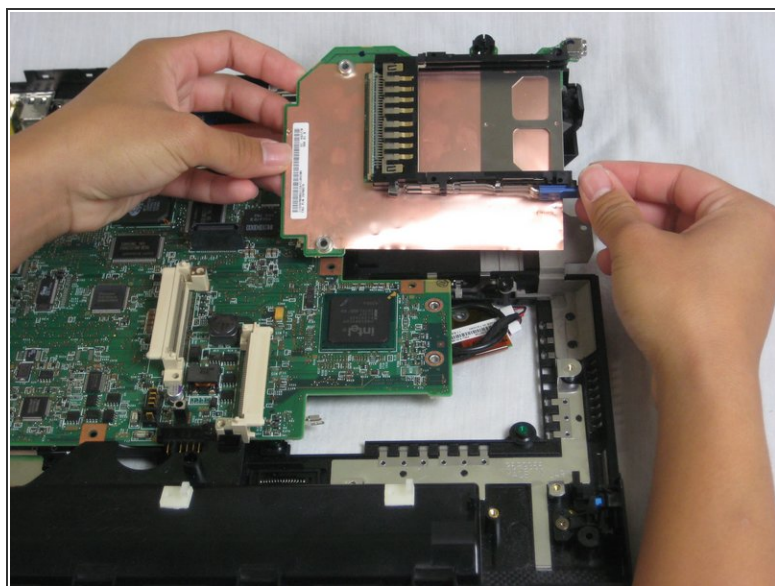
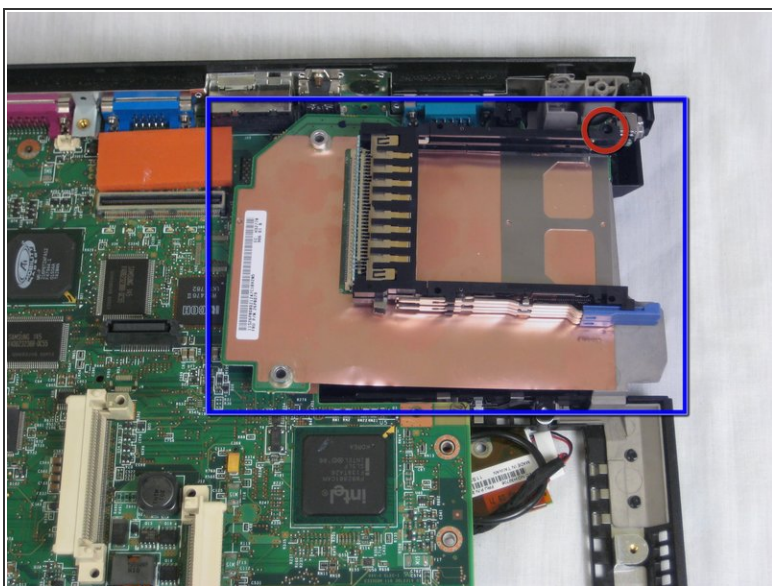
- Locate the CD Drive Bay
- Remove the three 5.6mm screws.
- Remove the 16mm screw.
- Lift the right side and pull the CD drive bay out.
- ⓘ The black lever will pop out.

Step 29



- Once the CD drive bay is removed, locate the speaker data and power cables.
- Remove the cables from the motherboard.

Step 30



- Locate the expansion bay.
- Remove the 16mm screw.
- Lift and remove the expansion bay.

Step 31



- Rotate the laptop so that the back ports are facing you.

Step 32



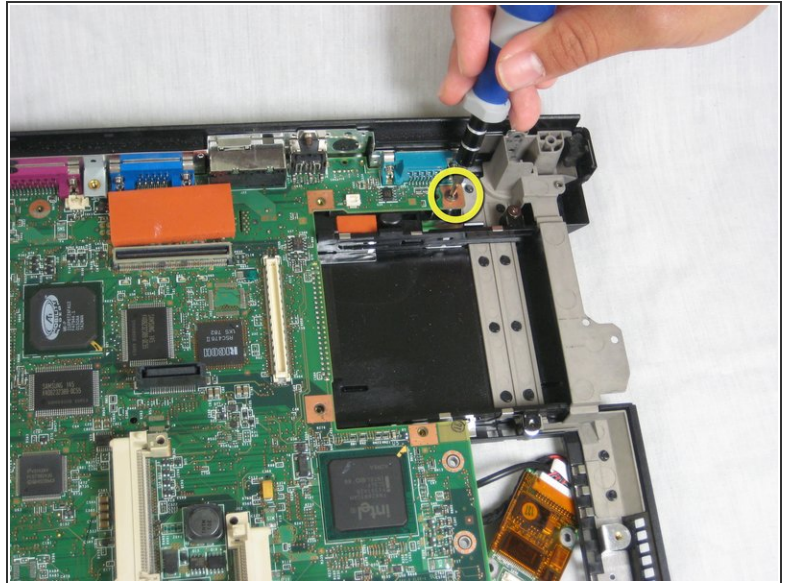
- Remove the three 5.8mm screws with a Phillips #0 screwdriver.

Step 33



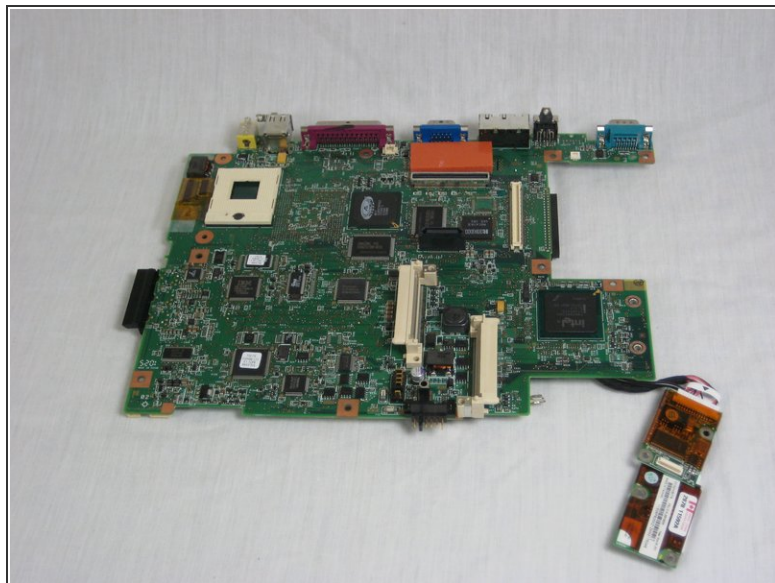
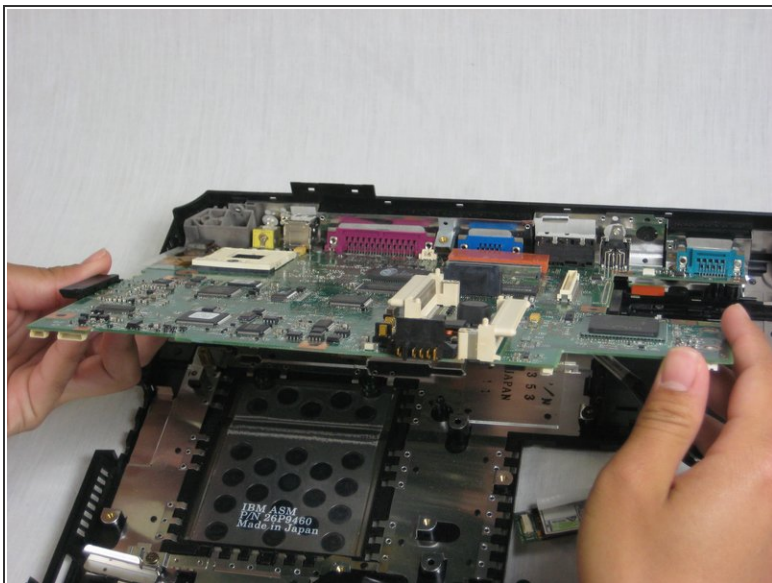
- Remove the six 11mm nuts with a wrench.
- ⓘ Pliers can be used, but are not recommended.


Step 34



- Rotate the laptop to its original position.
- Remove the 5.6mm screw located on the upper right corner of the motherboard.

Step 35



 The wireless and bluetooth cards are connected to the motherboard!

- Pull out the motherboard towards you carefully.
- Place the motherboard somewhere dry and clean.

To reassemble your device, follow these instructions in reverse order.