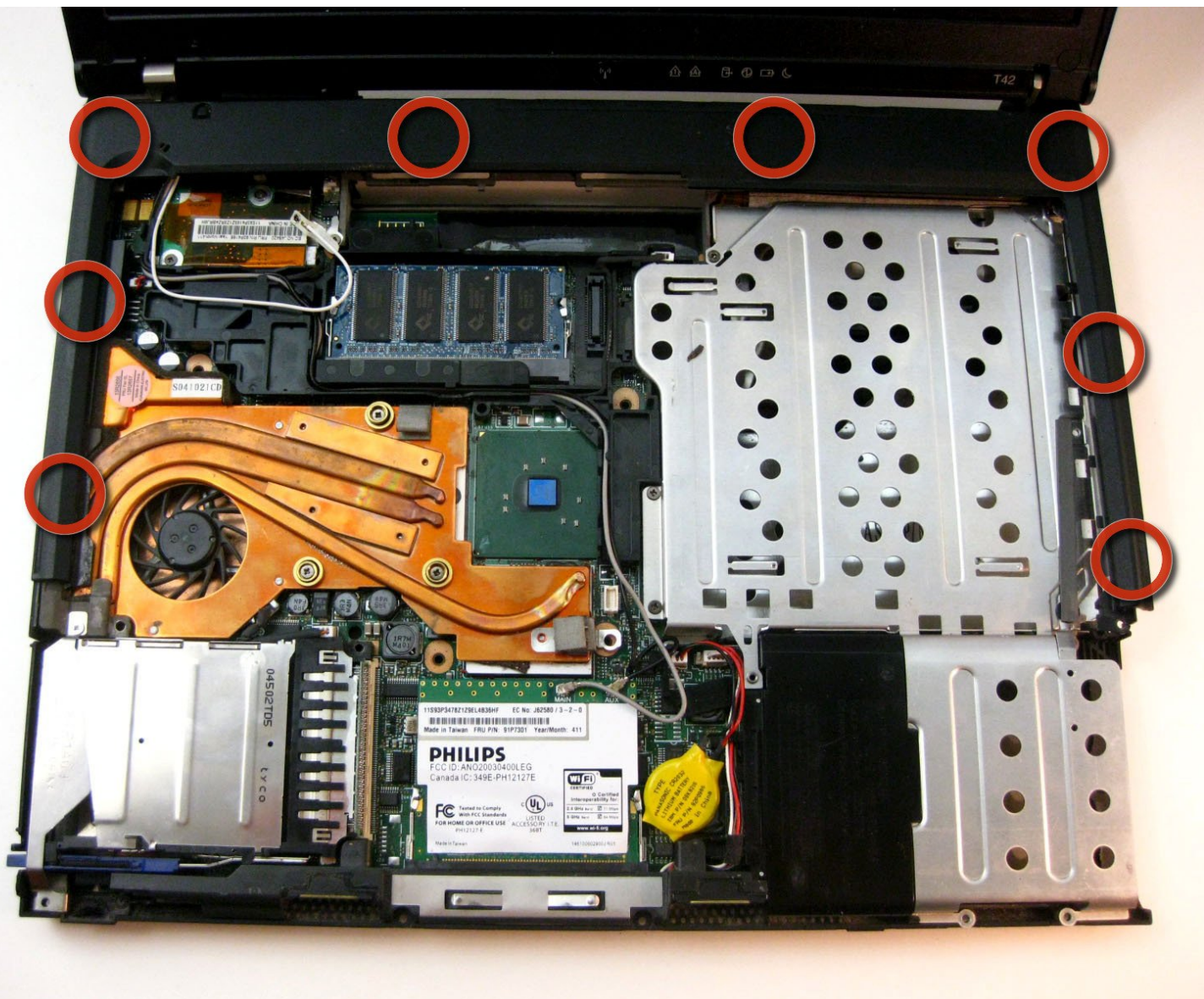




Disassembling IBM ThinkPad T42 Plastic Edge Cover

Written By: Gerald Watanabe



INTRODUCTION

The plastic edge cover needs to be removed to get to some components.



TOOLS:

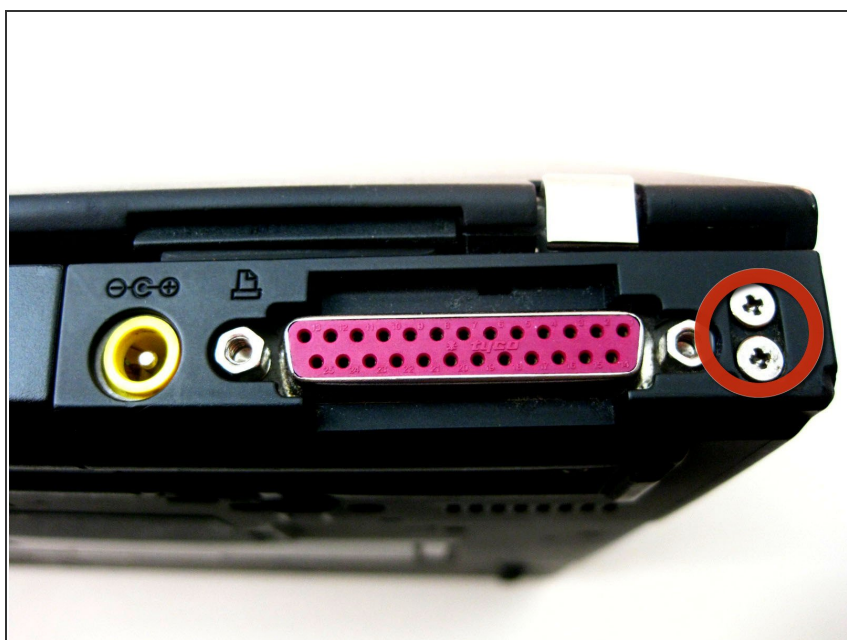
- [Phillips #0 Screwdriver](#) (1)
-

Step 1 — Bottom Cover



- Unscrew the 20 Phillips screws on the underside of the T42.
- ⓘ For ease of reassembly, keep your screws organized.

Step 2 — Rear Screws



- Unscrew the 2 Phillips screws on both sides of the T42's rear.

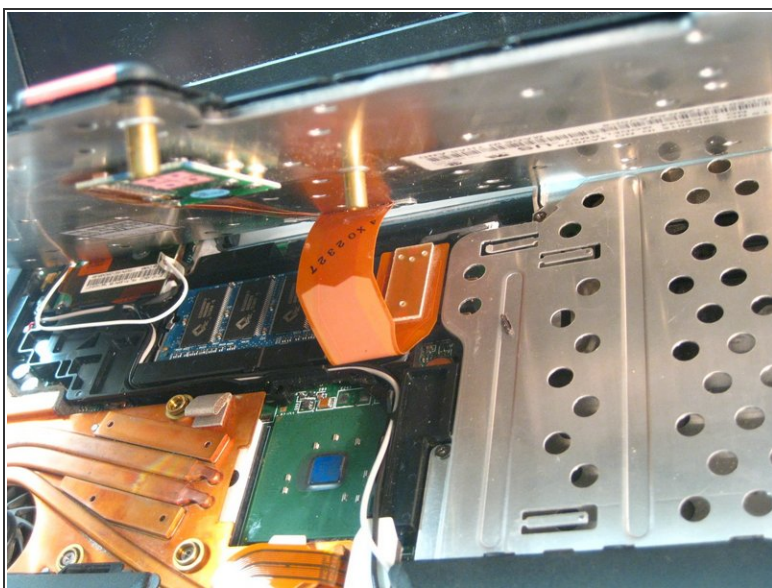
Step 3 — Keyboard/Trackpad Removal



- Flip the laptop over and open the screen.

⚠ The bezel and keyboard will be loose, be careful.

Step 4 — Disconnecting Ribbon Cables



- Carefully maneuver the palm rest away from the keyboard, as both the keyboard and palm rest/trackpad will come off together.

⚠ Remember, both the keyboard and trackpad have connectors to the motherboard. Disconnect these before completely removing either component.

Step 5 — Plastic Edge Cover



- Starting from the bottom right, carefully remove off the bezel. Use a spudger or flat head screwdriver if needed.

To reassemble your device, follow these instructions in reverse order.