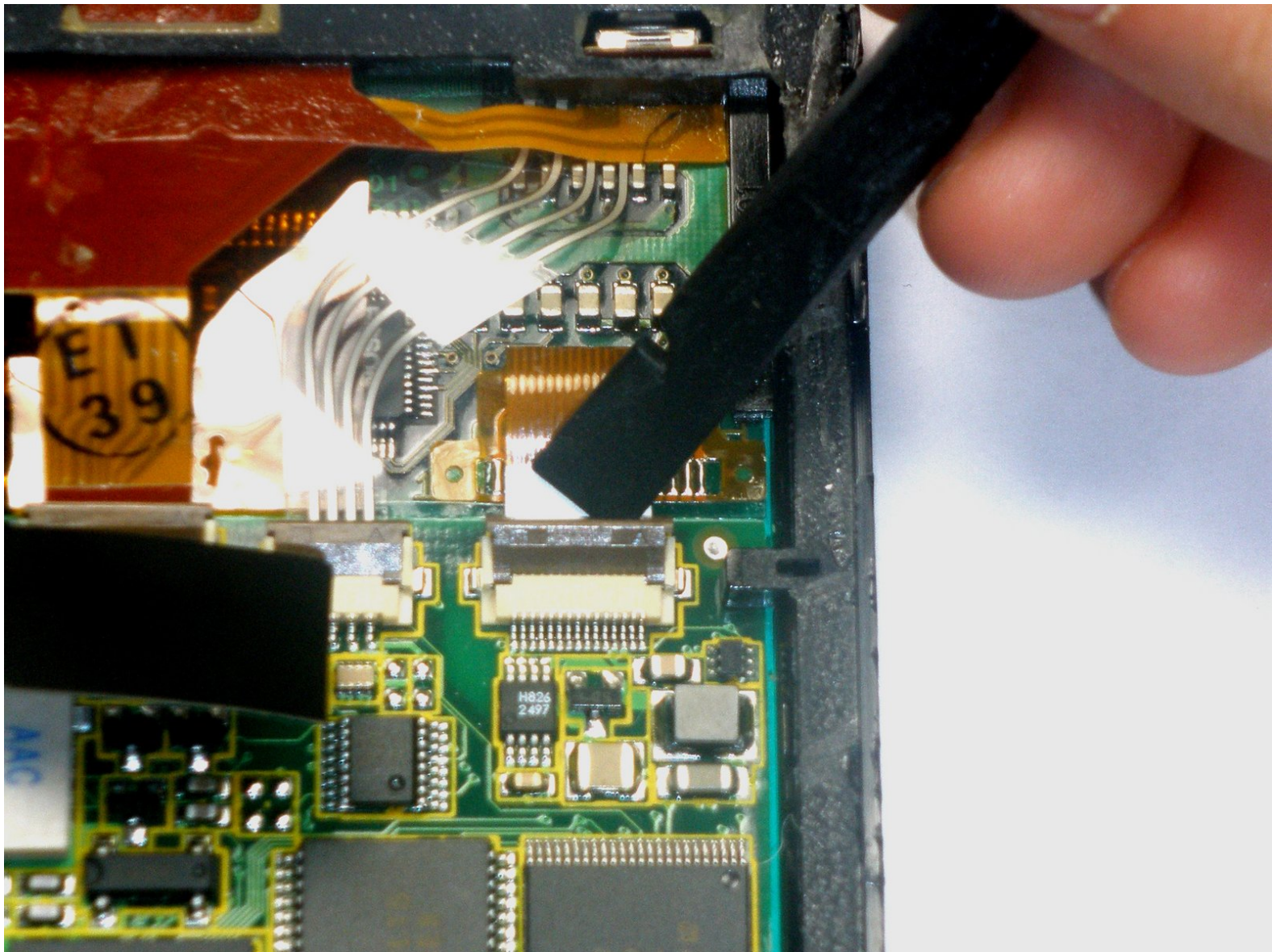




Disassembling IBM WorkPad c3 LCD

This guide will show how to remove the LCD/Digitizer combo from the IBM WorkPad c3.

Written By: Emily Falkenstein



INTRODUCTION

This is a step-by-step guide showing how to remove the LCD/Digitizer combo from the IBM WorkPad c3. This is a fairly easy removal.

TOOLS:

- [Spudger](#) (1)
-

Step 1 — Back Case



- Turn the device over so that the screen is facing down.

! In the next step the device will be heated, so the screen must be turned over to prevent heat damage to the LCD/Digitizer.

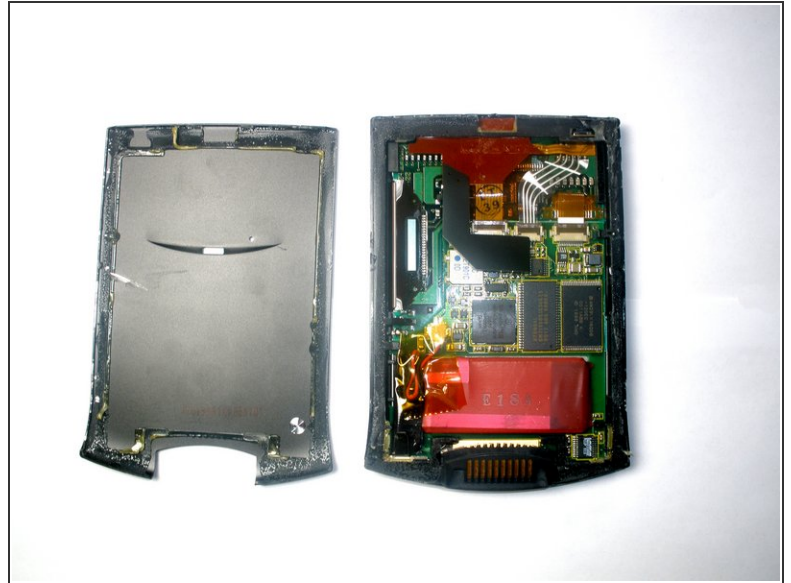
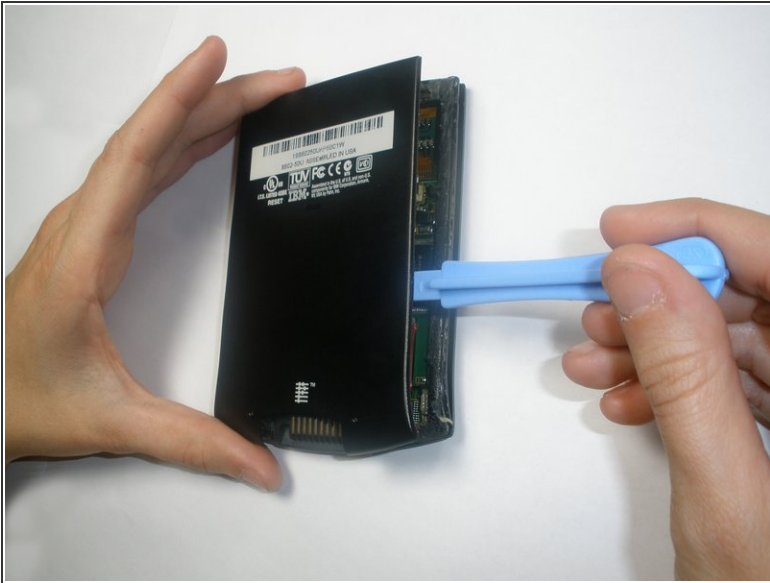
Step 2



- Using a hair dryer, slowly heat the edges of the WorkPad.
- Spend at least one minute heating each side of the device. This will melt the glue holding the case together, and allow it to be removed.

! Be sure not to touch the device directly after heating as it will be extremely hot. Use a towel or oven mitt to grab it.

Step 3



- Use a plastic opening tool to pry the back case from the WorkPad.
- ⓘ If the rear cover is not coming off very easily, you probably need to reheat the case in order to sufficiently melt the glue.

Step 4 — Front Case



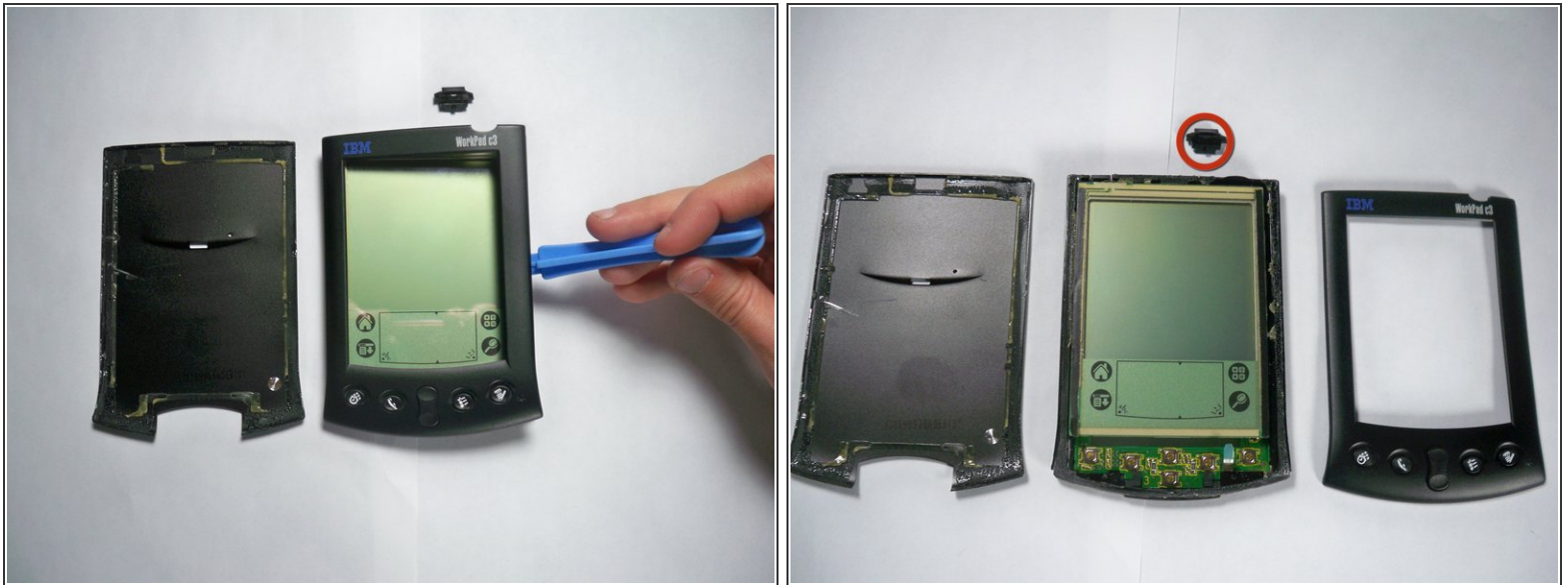
- Turn the device over, so that the screen is laying on a flat surface.

Step 5



- If the back case has already been removed, carefully place it on the WorkPad to protect the circuitry inside from the heat.
 - Using the hair dryer, slowly heat the edges of the device. Spend at least 1 minute on each side, thoroughly heating the case.
- ⚠** The LCD/Digitizer combo is very sensitive to heat, and can easily be ruined if it is directly exposed to the hair dryer. Verify that the screen is face down.

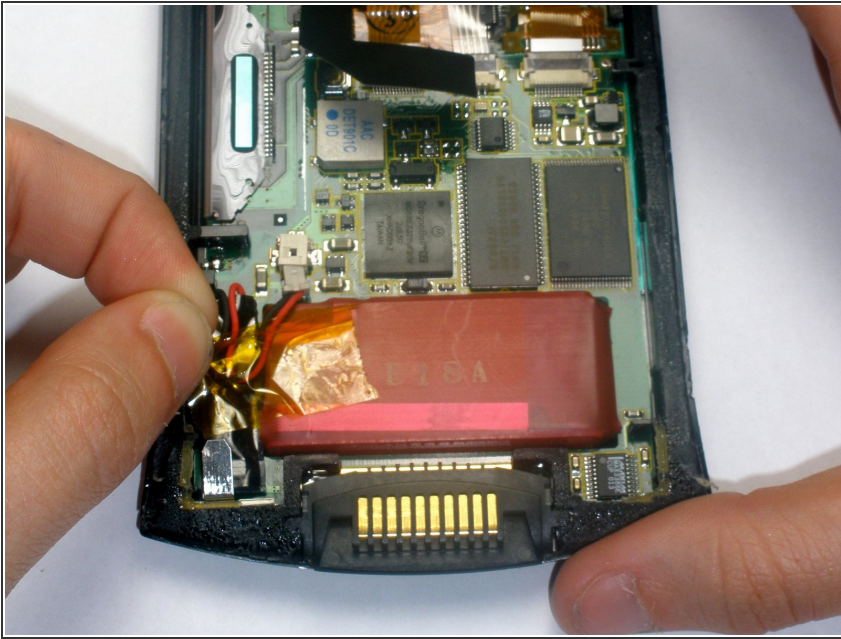
Step 6



! The device will be extremely hot. Use a towel or oven mitt to grab it.

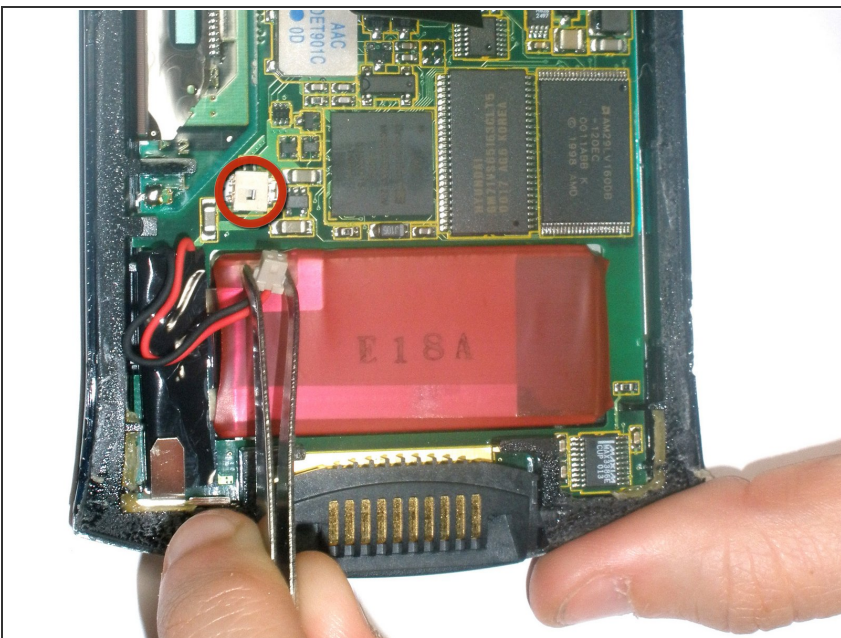
- Using the Plastic Opening Tools, take the front of the case off.
- i** If the case is difficult to remove, try repeating step 2.
- The power button at the top of the device will be loose once the front part of the case is removed.

Step 7 — Battery



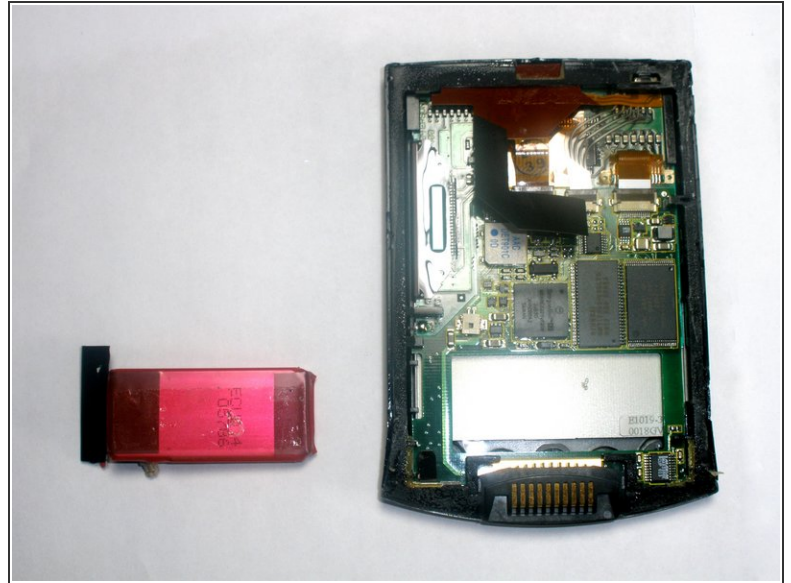
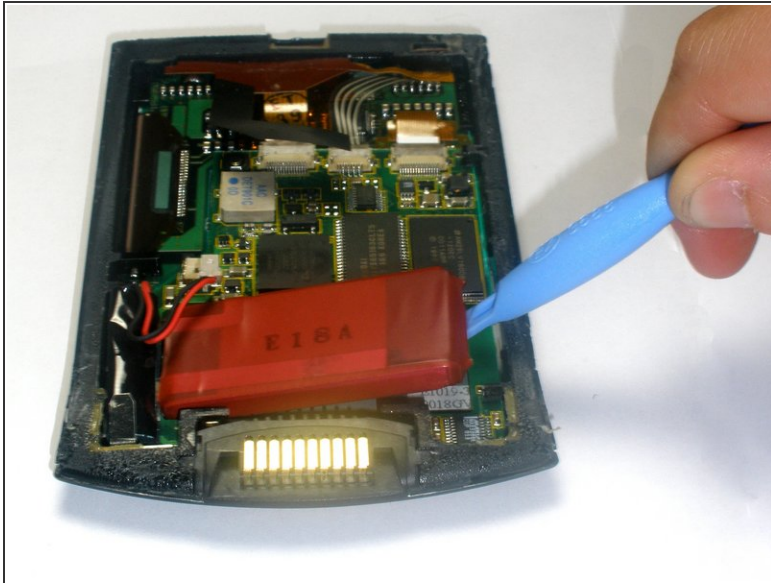
- Remove the yellow tape that is covering the battery connector

Step 8



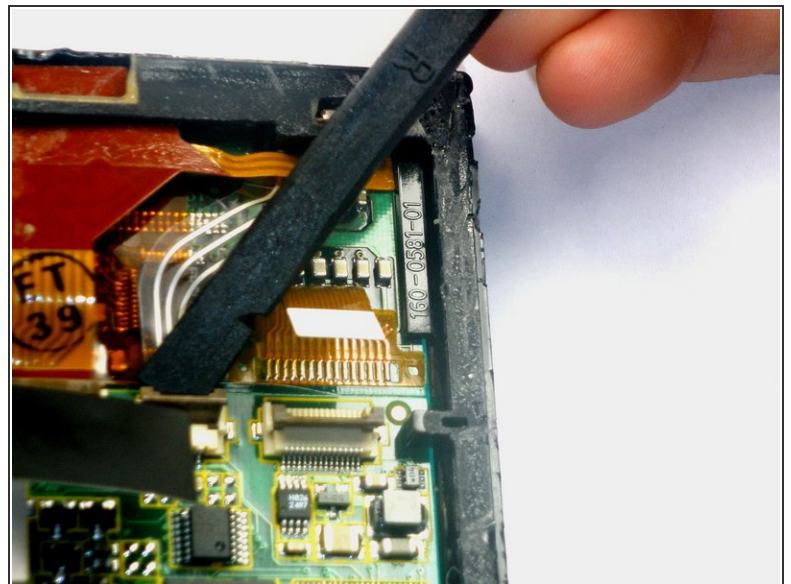
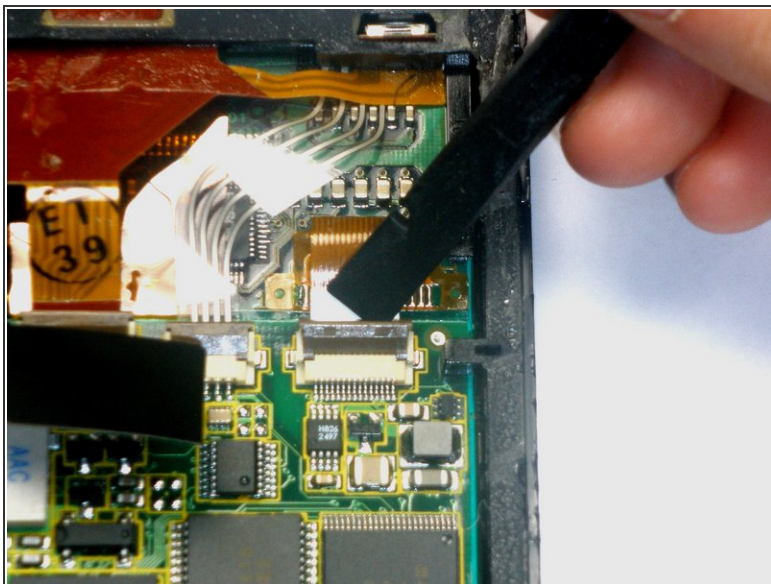
- Using the tweezers, carefully disconnect the battery cable from the port

Step 9



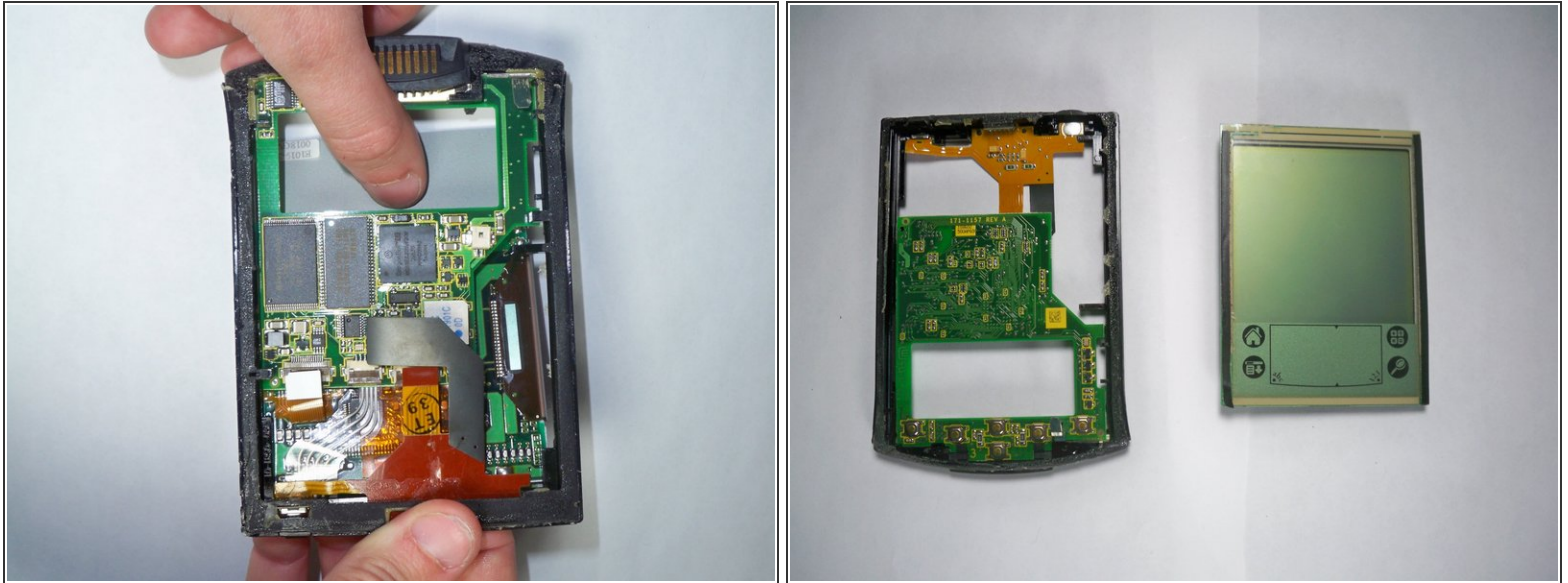
- Using the plastic opening tools, lift the battery out of the case
- ⓘ The battery is secured with adhesive and it will take some effort to remove

Step 10 — LCD



- Using the spudger lift the tabs holding the LCD/Digitizer combo cables to the WorkPad.

Step 11



- Using your thumb, press down gently on the back of the LCD.
- The LCD will disconnect and fall out of the case, so be sure to have your hand waiting for it.

To reassemble your device, follow these instructions in reverse order.