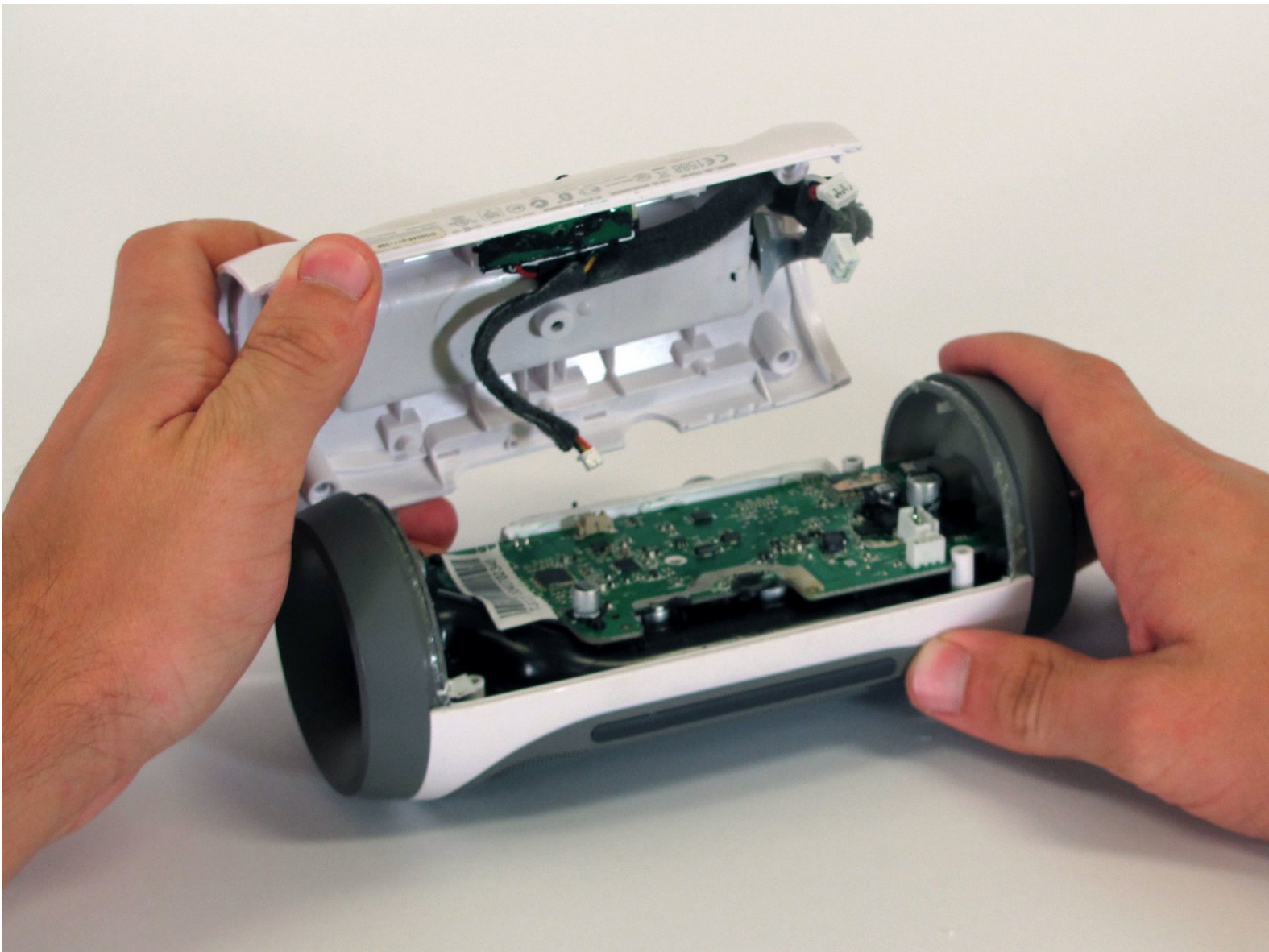




Disassembling JBL Charge Casing

If one is to repair the JBL Charge, first they must get into the device. Follow this guide to open the JBL Charge.

Written By: Joe Durand



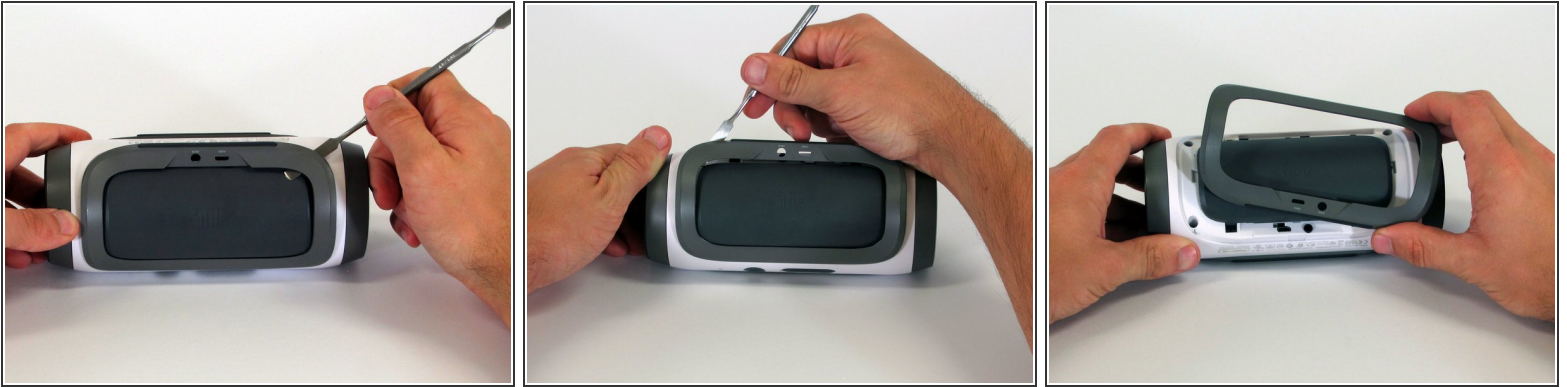
INTRODUCTION

If you need to remove the JBL Charge case, follow this guide. It's hard to repair anything without opening it up first.

TOOLS:

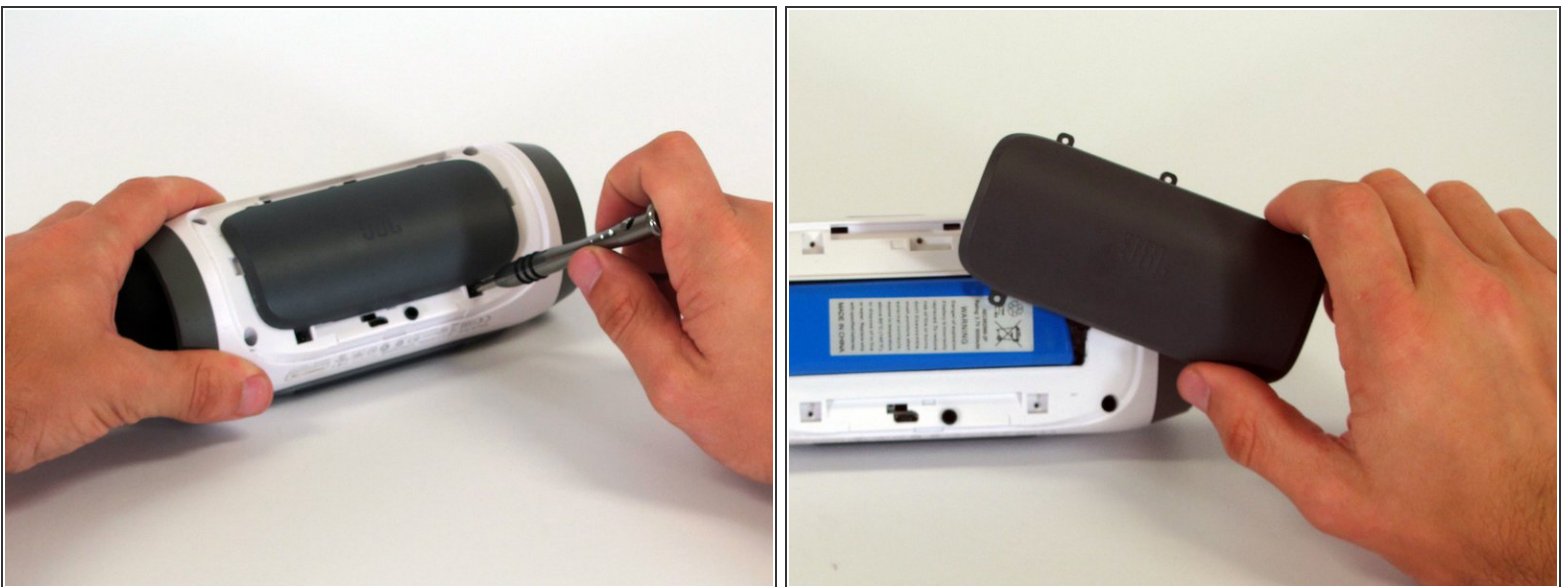
- [Metal Spudger](#) (1)
 - [Phillips #1 Screwdriver](#) (1)
 - [Spudger](#) (1)
 - [Phillips #2 Screwdriver](#) (1)
-

Step 1 — Disassembling JBL Charge Casing



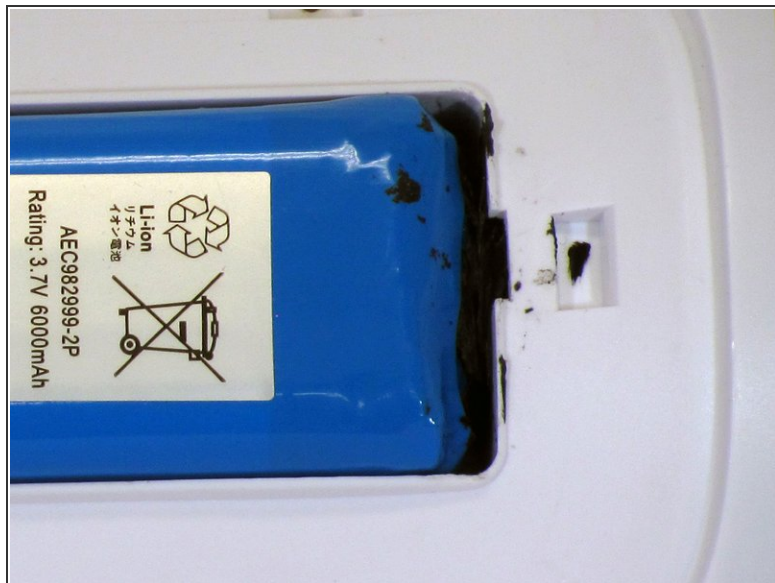
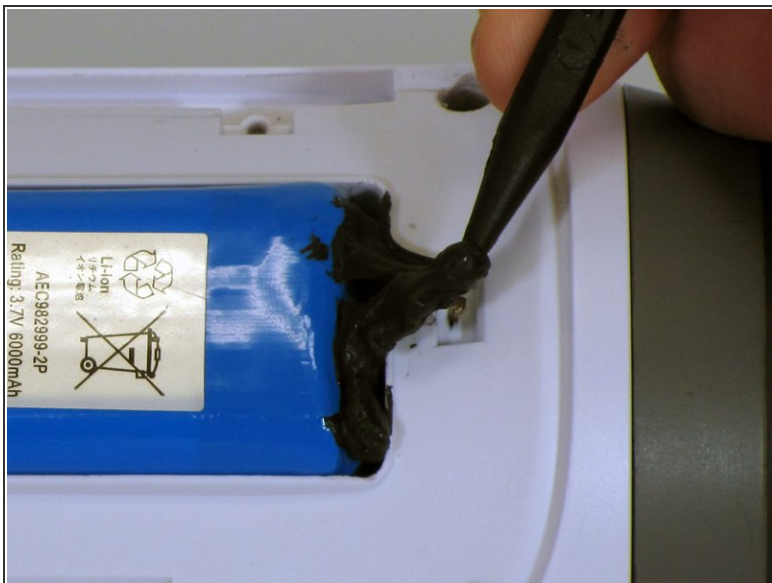
- Make sure the device is powered off before you begin to disassemble the speaker.
- Remove the trim from the speaker using a jimmy or metal spudger.

Step 2



- Use the PH1 screwdriver to remove all five of the 6 mm screws from the battery cover.
- Remove the battery cover and set the cover aside.

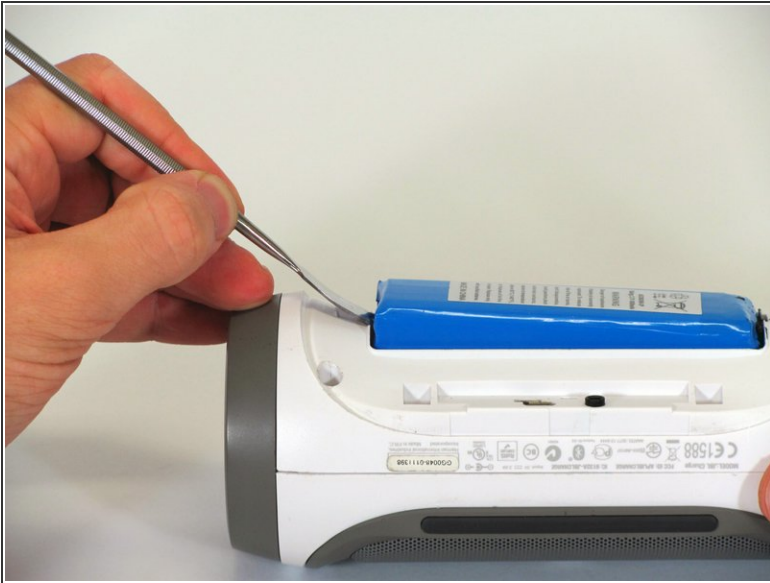
Step 3



- Use a spudger to carefully remove the liquid electrical tape that holds the battery inside the battery compartment.

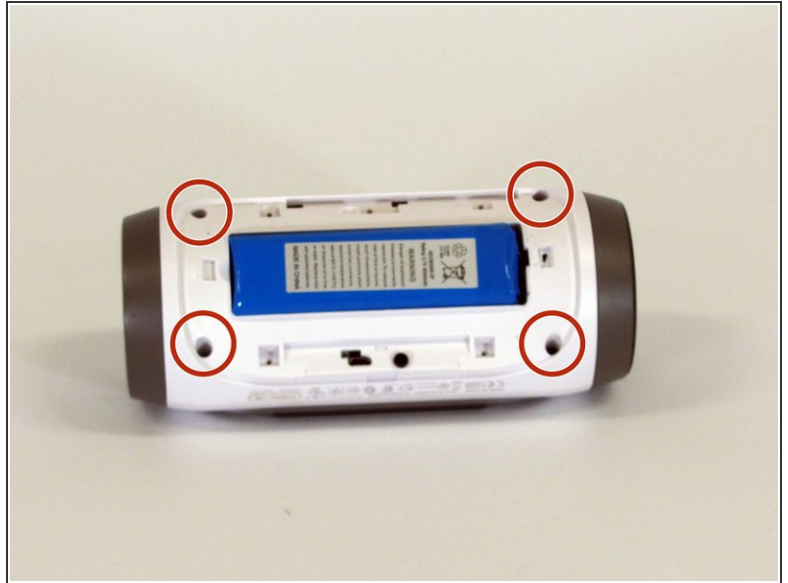
⚠ Be careful not to puncture the battery, or damage the battery wire underneath the liquid electrical tape.

Step 4



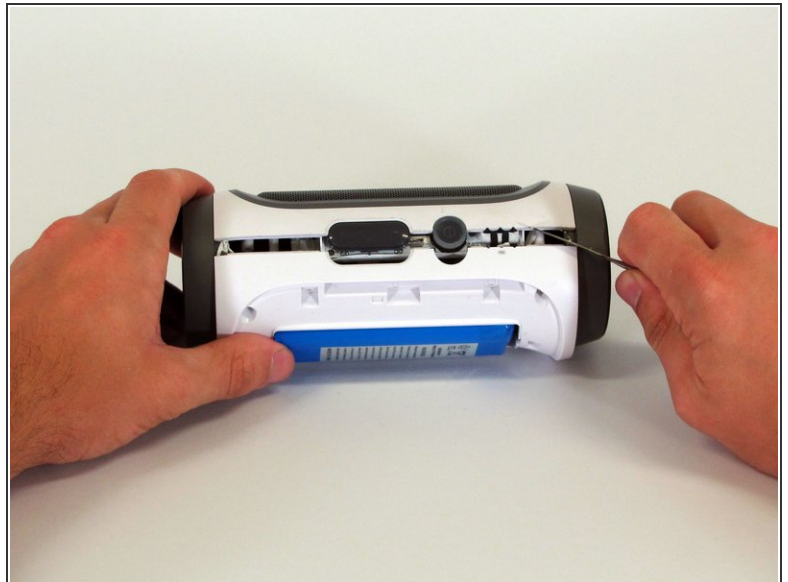
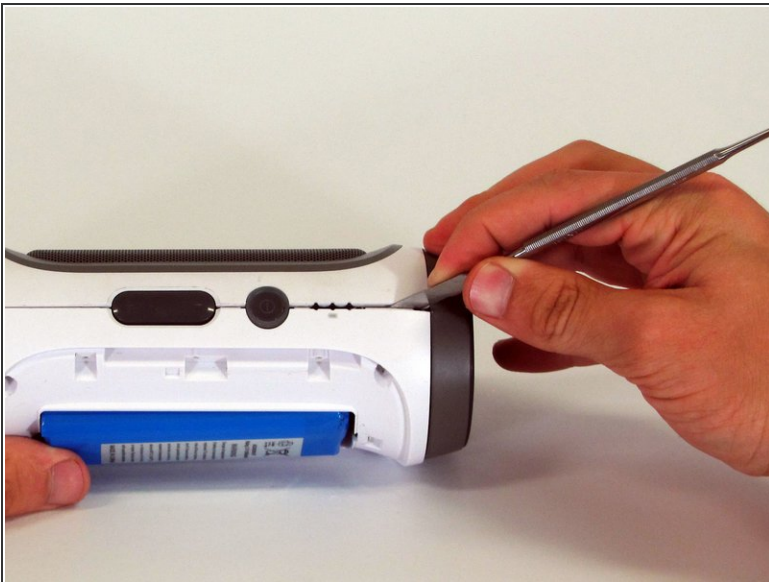
- Use a metal spudger to lift the battery out of the device.
 - Lift the end of the battery that does not have the wire connection and remove the 16 mm PH2 screw underneath the battery.
- ⚠ Notice the wire that is connecting the battery to the device. Attempting to remove the battery completely could cause damage to the wire.

Step 5



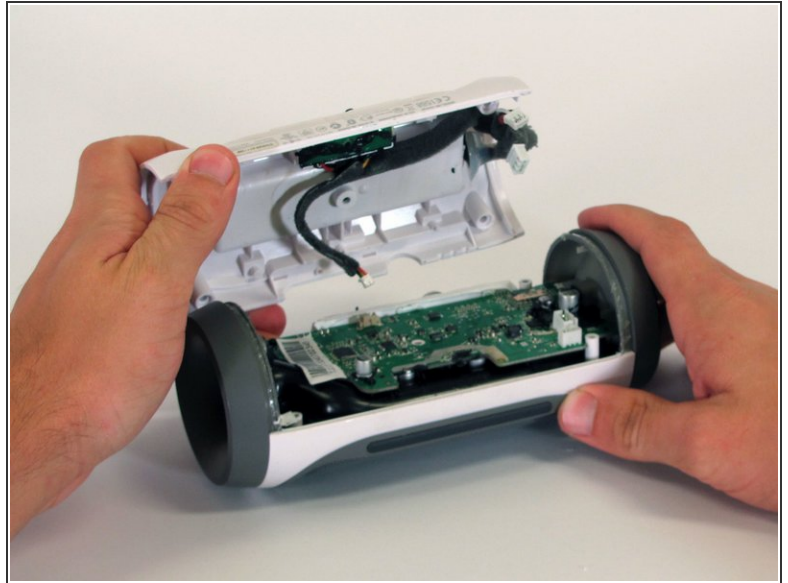
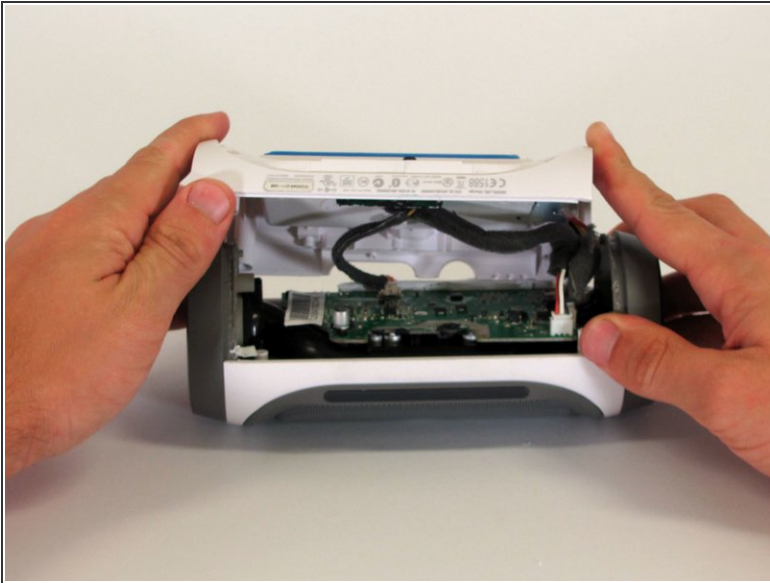
- Remove the four 16 mm screws from the white plastic casing using the PH2 screwdriver.

Step 6



- Starting in a corner of the device where the casing and the side meet, use a pointed metal spudger to pry the back casing off the speaker and the glue holding the seam together.
- Slide the metal spudger along the seam to separate the back casing from the rest of the speaker.

Step 7



- Once the back casing is open, disconnect the three white connectors from the motherboard.
- Remove the upper casing.

To reassemble your device, follow these instructions in reverse order.