



# Disassembling Keurig Mini B-31 Top

PREREQUISITE ONLY

Written By: Andrew Adriance





## TOOLS:

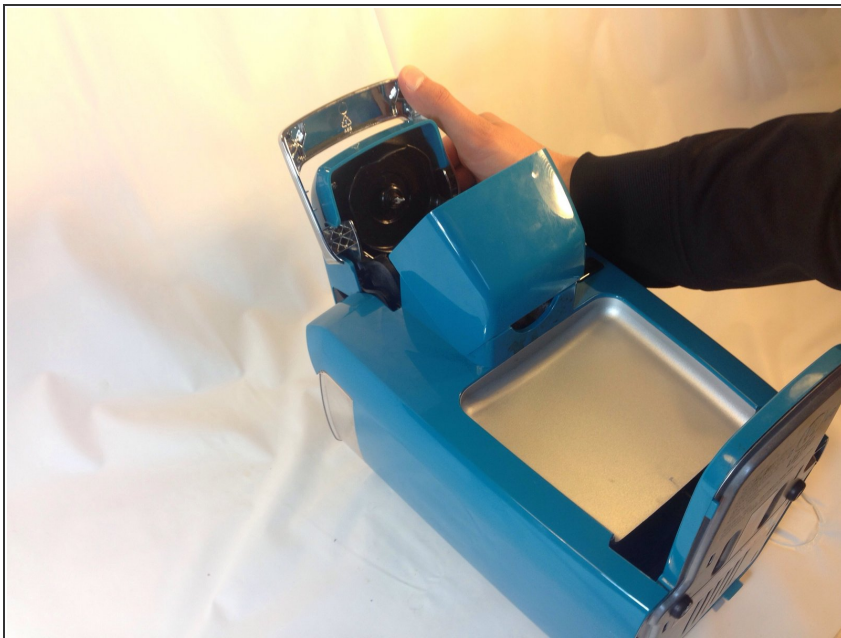
- [Phillips #1 Screwdriver](#) (1)
-

## Step 1 — Top



- Open the top lid of the Keurig.
- Pull directly outwards on one of the arms that holds the top lid in place. It will take some force to get the arm off the peg. Once one side is off, repeat the process on the second arm.

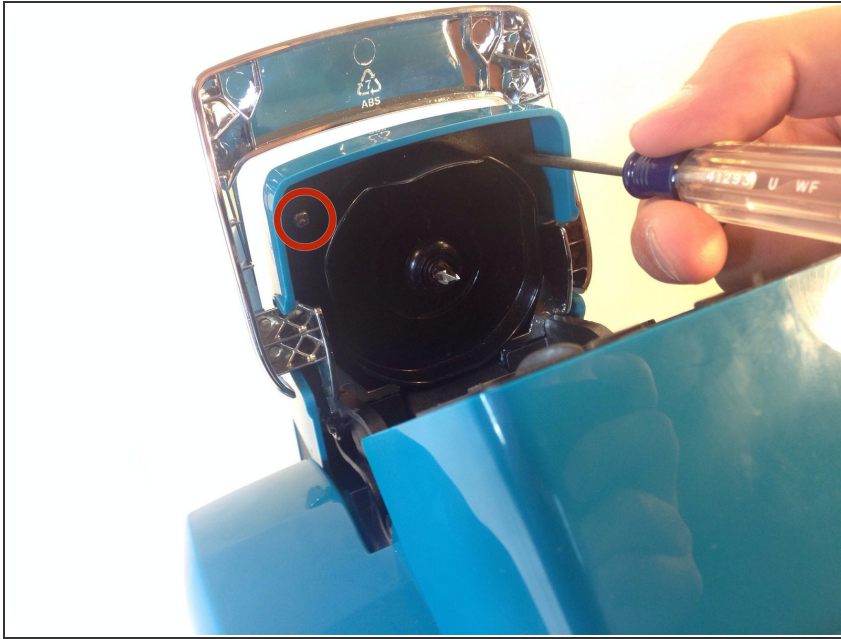
## Step 2



- Lay the Keurig on its back with the water reservoir pointing away from you.

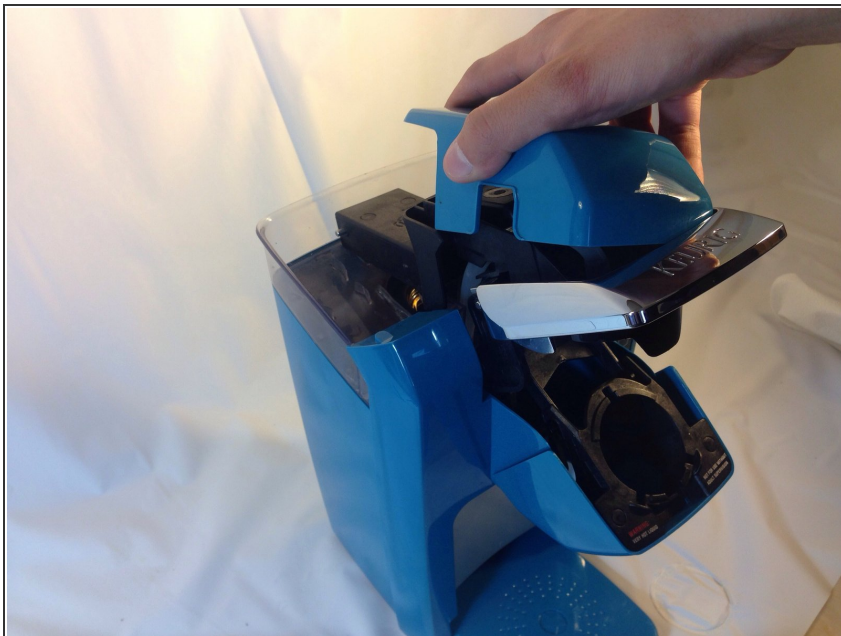


## Step 3



- ⚠ Avoid the top needle as it may puncture your hand.
- Unscrew the two 9mm #1 Philips screws that hold the top plastic cover in place.

## Step 4



- Set the Keurig in an upright position with the front side facing you.
- Pull the cover off the top of the Keurig. It should come off easily with little force.

## Step 5



- Firmly grasp the hose and pull it off of the plastic nozzle.

To reassemble your device, follow these instructions in reverse order.