



# Disassembling Kodak Advantix F350 Front Cover

This guide demonstrates how to remove the front and back cover from the camera.

Written By: David Cottrell





## TOOLS:

- [Phillips #00 Screwdriver](#) (1)
  - [iFixit Opening Tools](#) (1)
-

## Step 1 — Back Cover



- Turn off the camera.
- Locate the power switch on the front of the camera below the camera lens.
- Slide the switch to the off position.

## Step 2



- Locate the 3 screws that hold the back cover to the camera.
- One screw is located on the film opener side of the camera.
- The other screws are located on the opposite side of the camera.

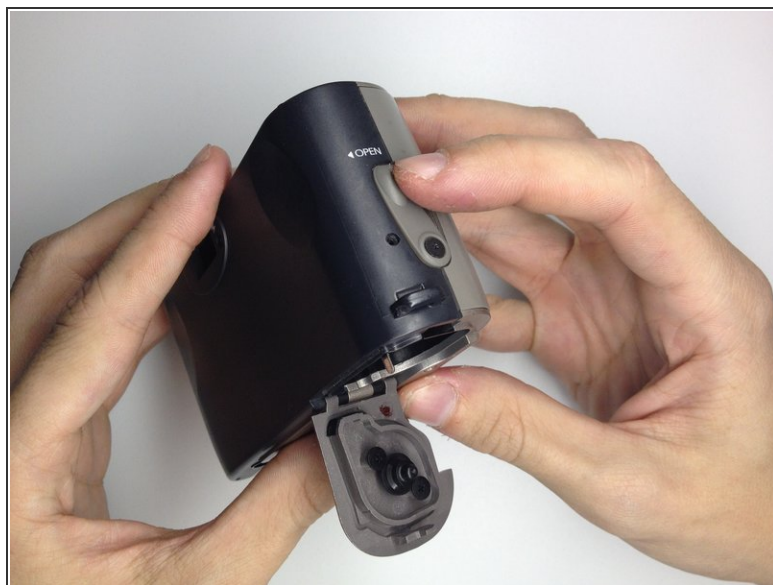


## Step 3



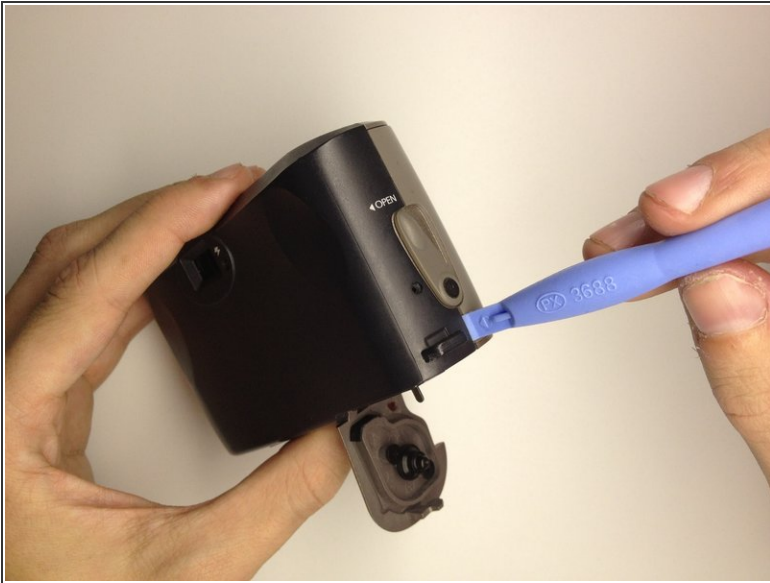
- Use the Phillips #00 Precision Screwdriver and remove the screws on the back cover.

## Step 4



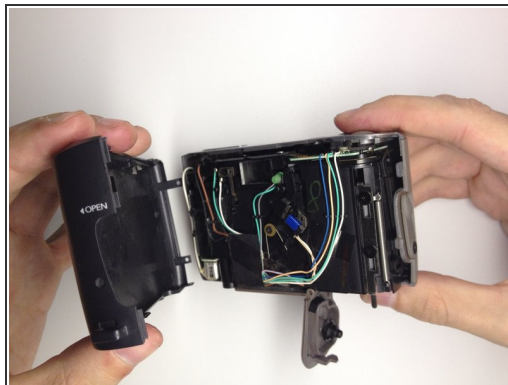
- Open the film door to remove the back cover.
  - Slide the film door lever to the left until the film door opens.

## Step 5



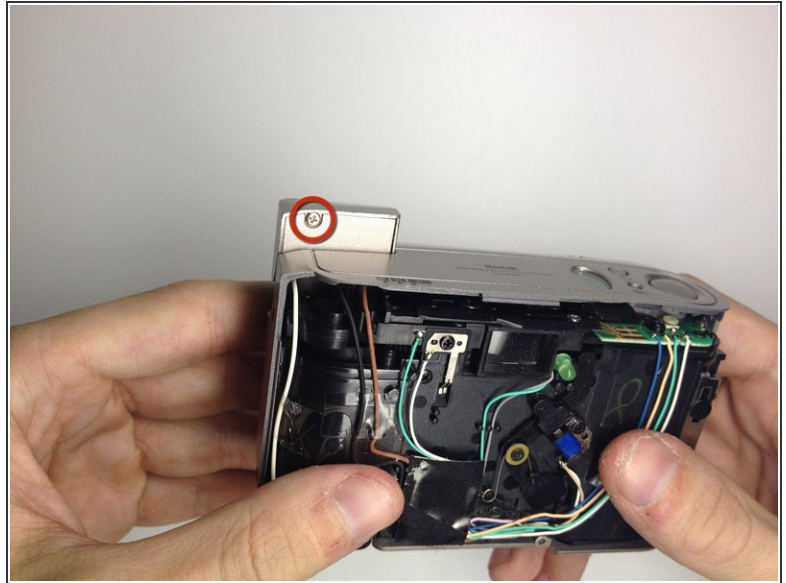
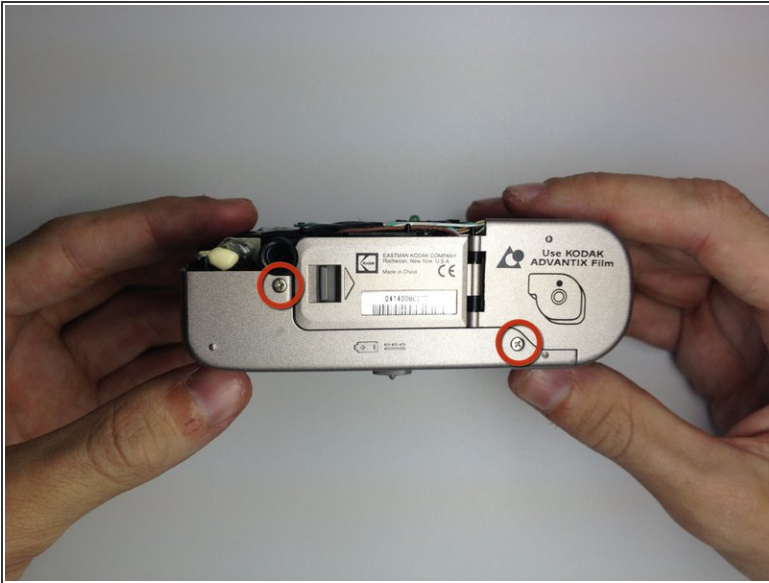
- Use a plastic opening tool to pry the case open until a small gap is present.
- Repeat this process at the top and bottom of the film door to loosen it.

## Step 6



- Grab the top and bottom of the case firmly as shown.
- Gently remove the back of the camera case with a slight twisting motion.

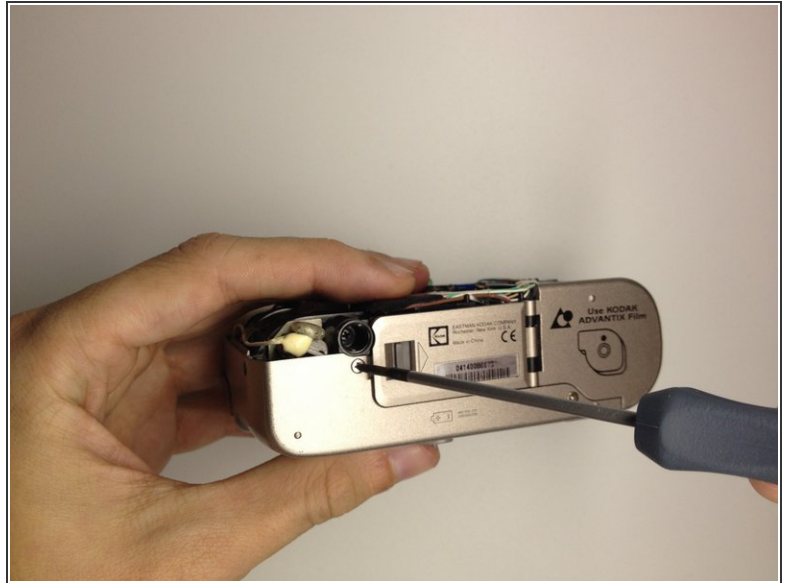
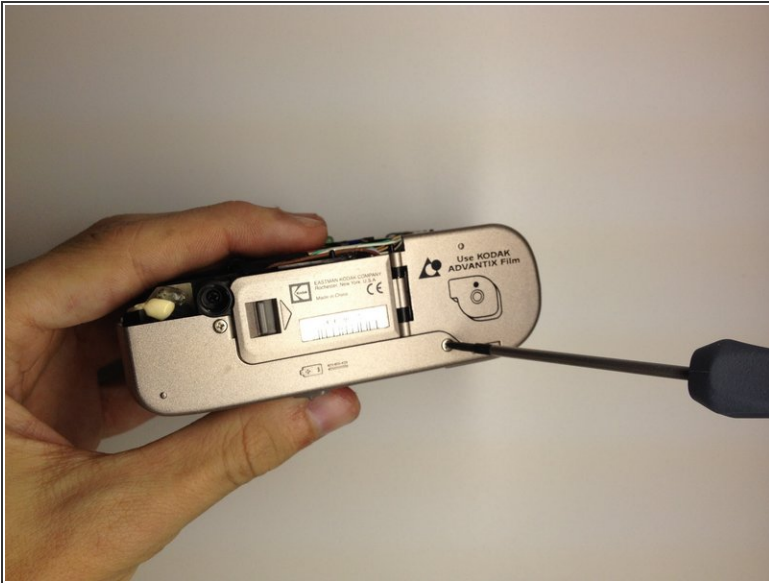
## Step 7 — Front Cover



- Locate the 3 screws on the camera that hold the front cover of the camera to the camera body.
  - The first 2 are located on the bottom of the camera.
  - The last screw is located behind the flash module.
    - Turn the camera on, and raise the flash module to locate the flash module screw.

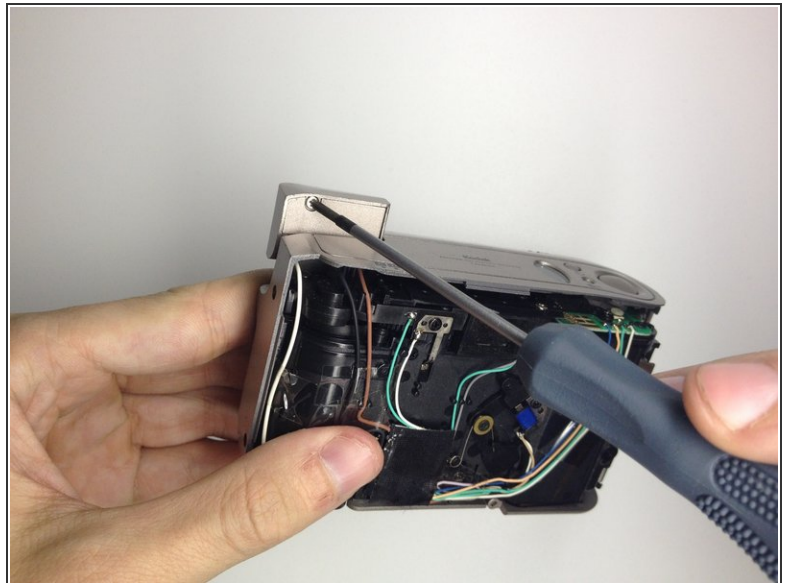
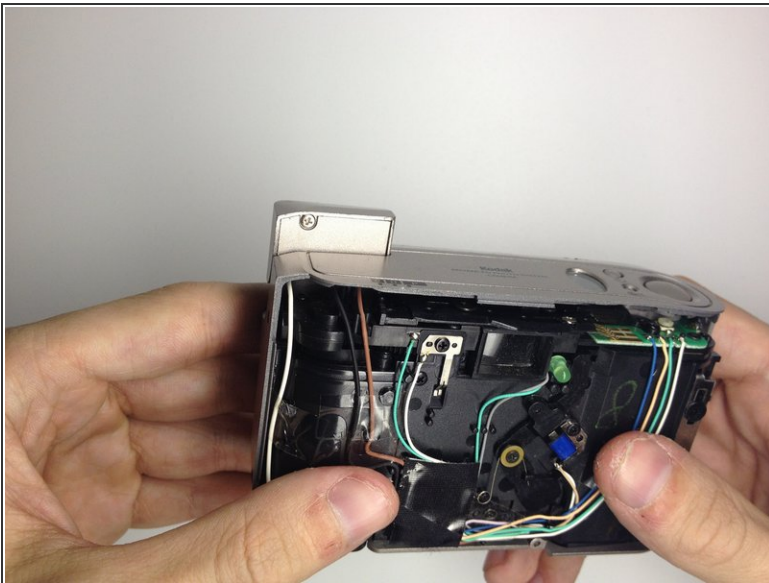


## Step 8



- Remove the 2 screws at the base of the camera housing.
  - Use the Phillips #00 Precision Screwdriver and remove the screws.
  - Repeat this process for the screw behind the flash module.

## Step 9



- Remove the screw located under the flash module using the Phillips #00 Precision Screwdriver.

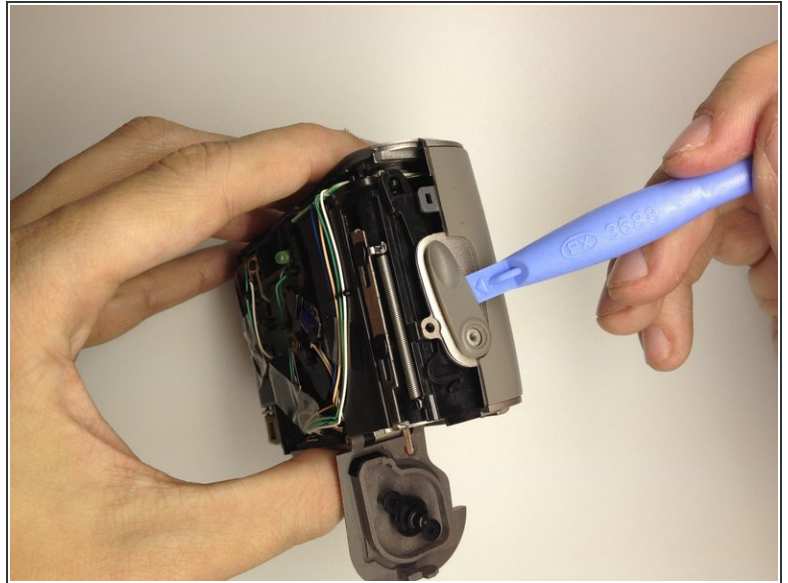
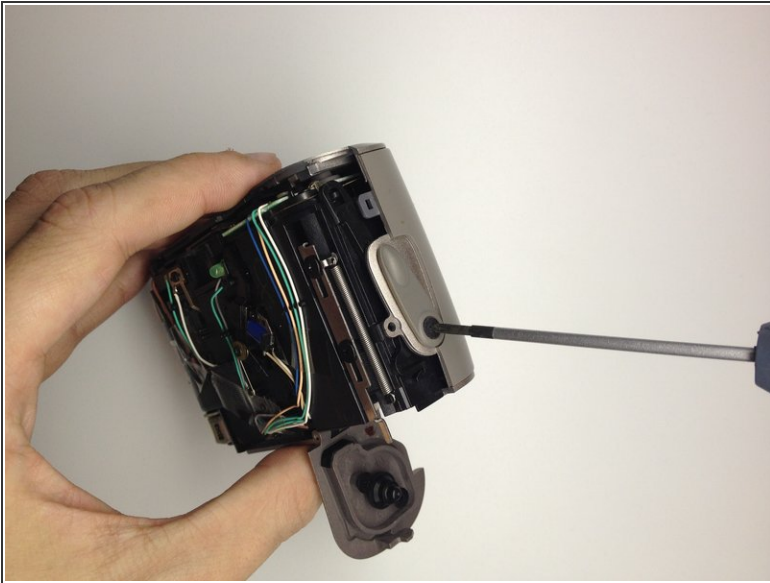
## Step 10



- Remove the flash cover.
  - Remove the flash module by twisting it up and outward of the camera housing.
  - The cover can now be removed.

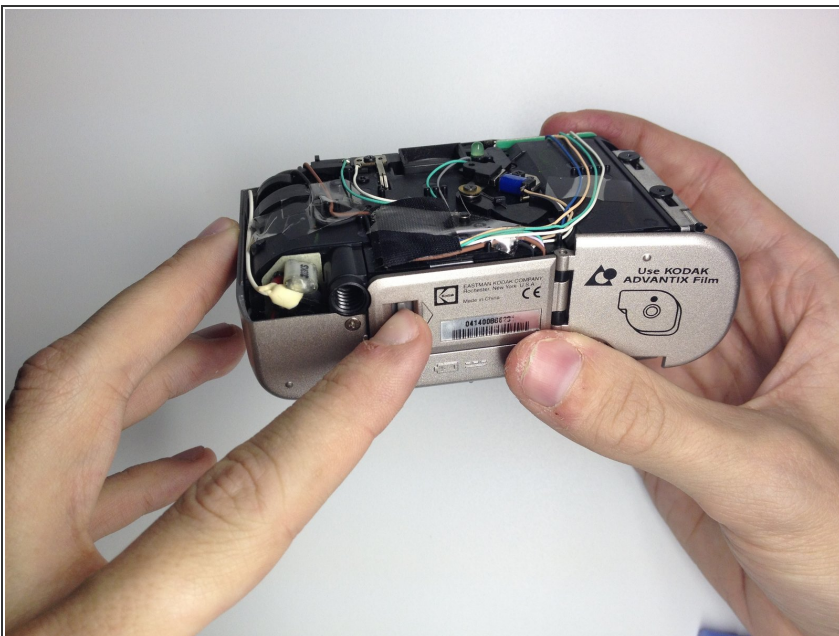


## Step 11



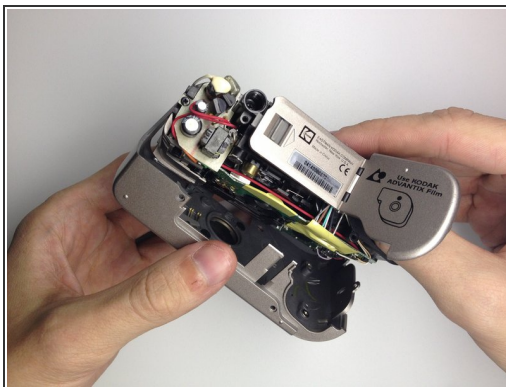
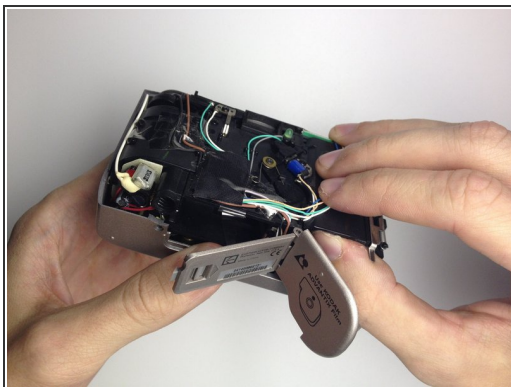
- Remove the film door lever.
  - Remove the screw holding the film lever in place by using a Phillips #00 Precision Screwdriver.
  - Using a plastic opening tool, gently pry the switch upwards to remove it.

## Step 12



- Open the battery door by pushing the lever towards the arrow indicated.

## Step 13



- Remove the front cover.
  - Insert your thumb in the film hole and gently pry the bottom loose.
  - Once the front is loose, gently pull it out.

To reassemble your device, follow these instructions in reverse order.