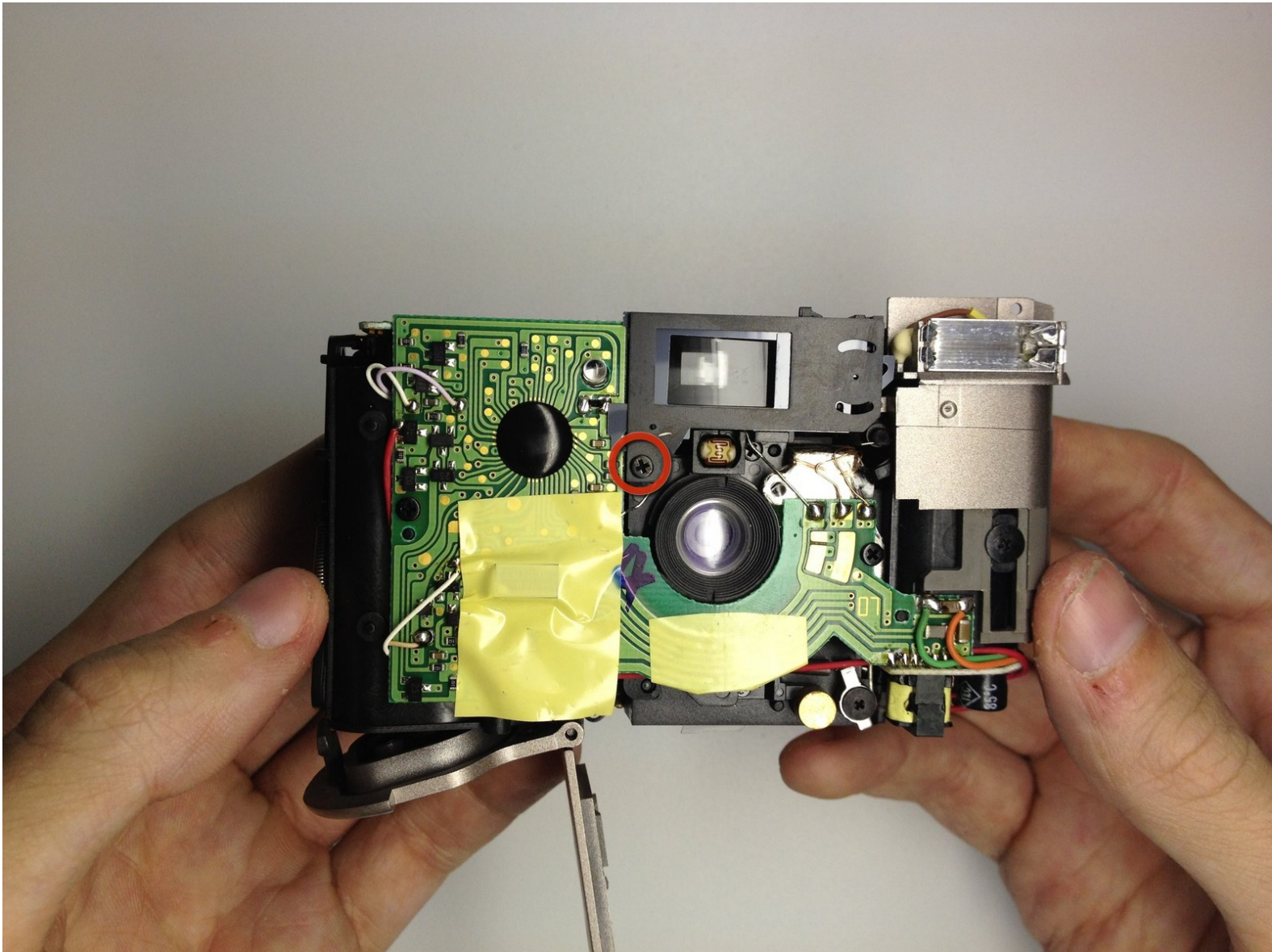




Disassembling Kodak Advantix F350 View Finder

This tutorial demonstrates how to remove or replace the viewfinder glass for the camera.

Written By: David Cottrell





TOOLS:

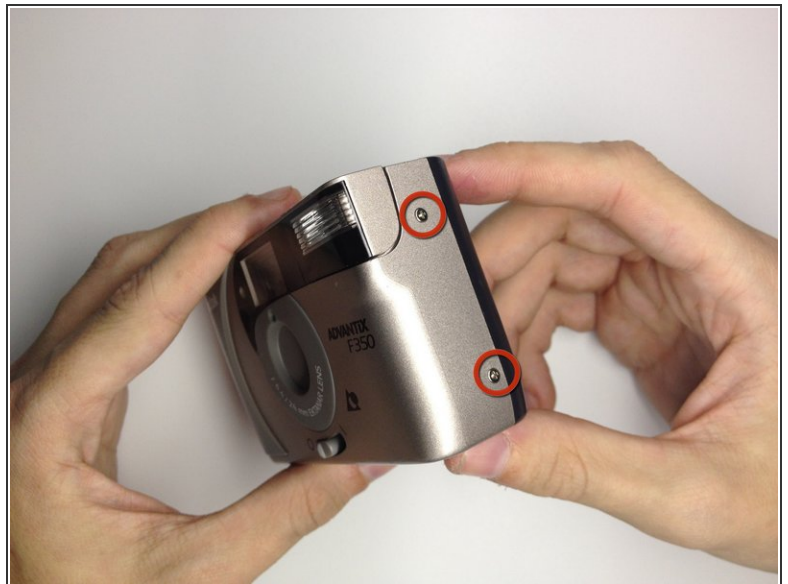
- [Phillips #00 Screwdriver](#) (1)
- [iFixit Opening Tools](#) (1)

Step 1 — Back Cover



- Turn off the camera.
- Locate the power switch on the front of the camera below the camera lens.
- Slide the switch to the off position.

Step 2



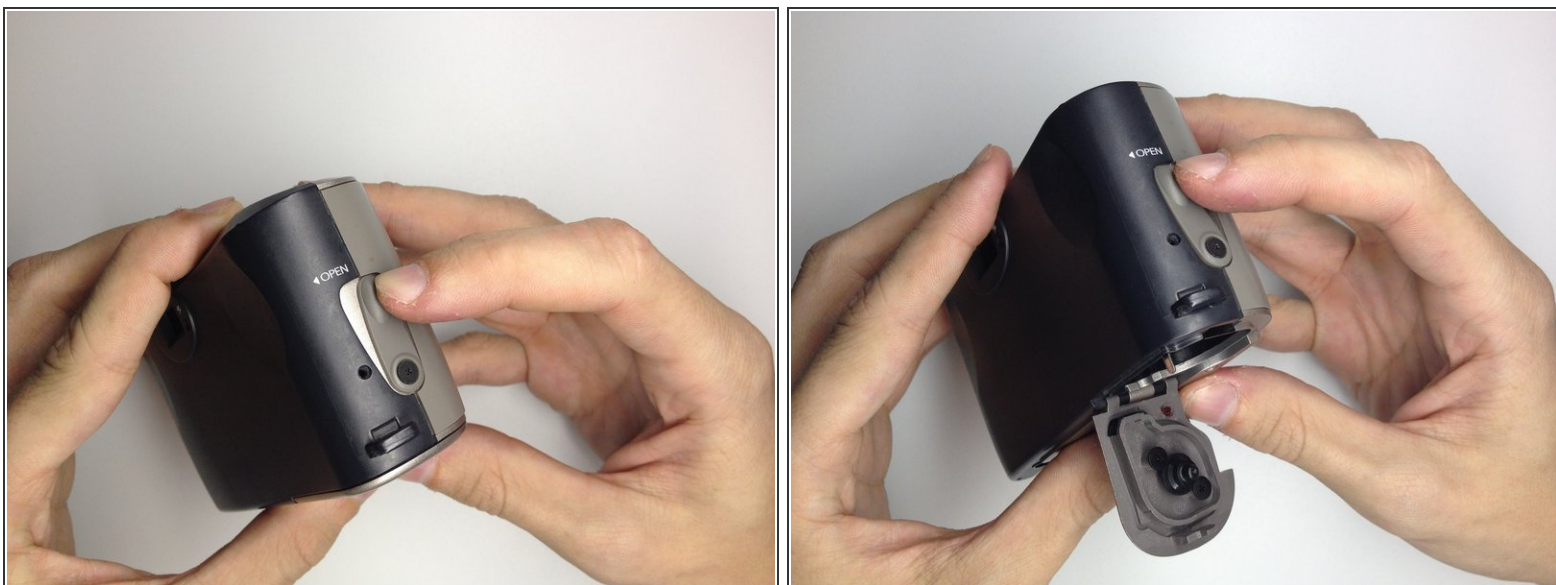
- Locate the 3 screws that hold the back cover to the camera.
- One screw is located on the film opener side of the camera.
- The other screws are located on the opposite side of the camera.

Step 3



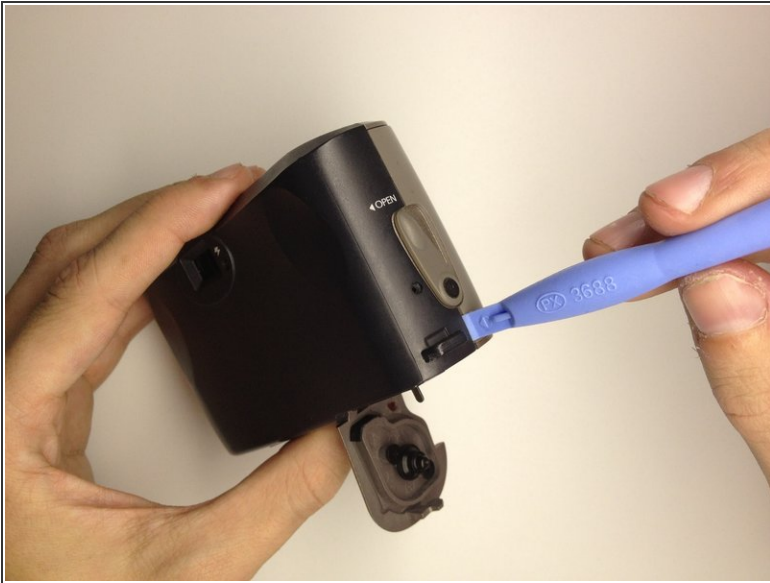
- Use the Phillips #00 Precision Screwdriver and remove the screws on the back cover.

Step 4



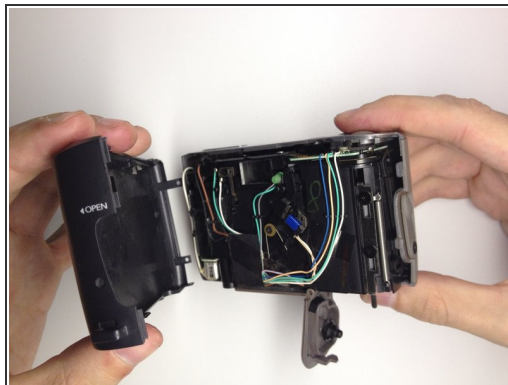
- Open the film door to remove the back cover.
 - Slide the film door lever to the left until the film door opens.

Step 5



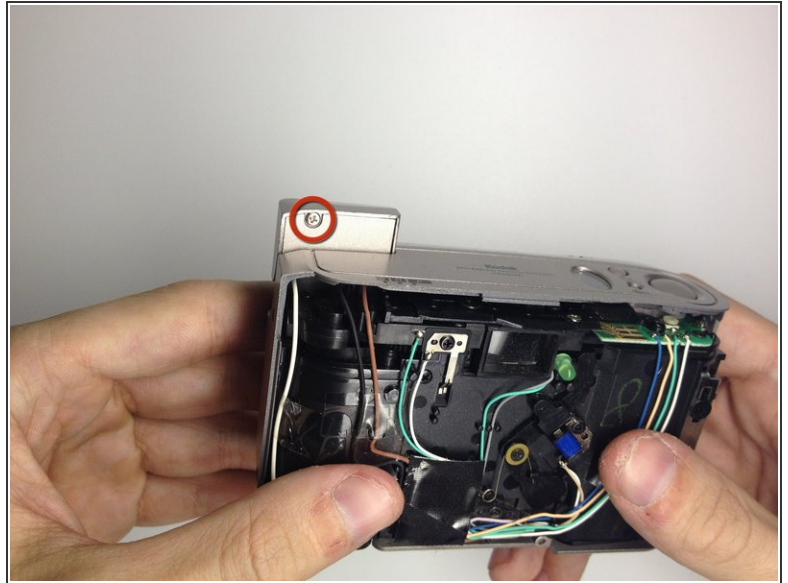
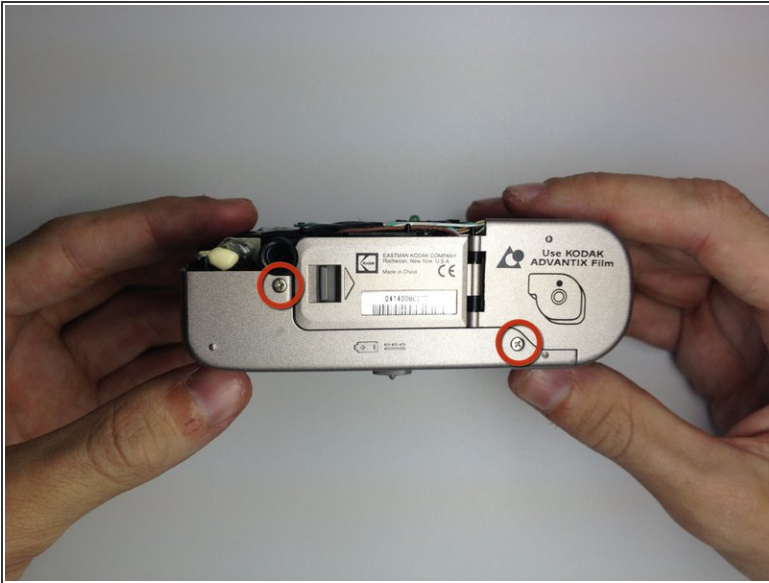
- Use a plastic opening tool to pry the case open until a small gap is present.
- Repeat this process at the top and bottom of the film door to loosen it.

Step 6



- Grab the top and bottom of the case firmly as shown.
- Gently remove the back of the camera case with a slight twisting motion.

Step 7 — Front Cover



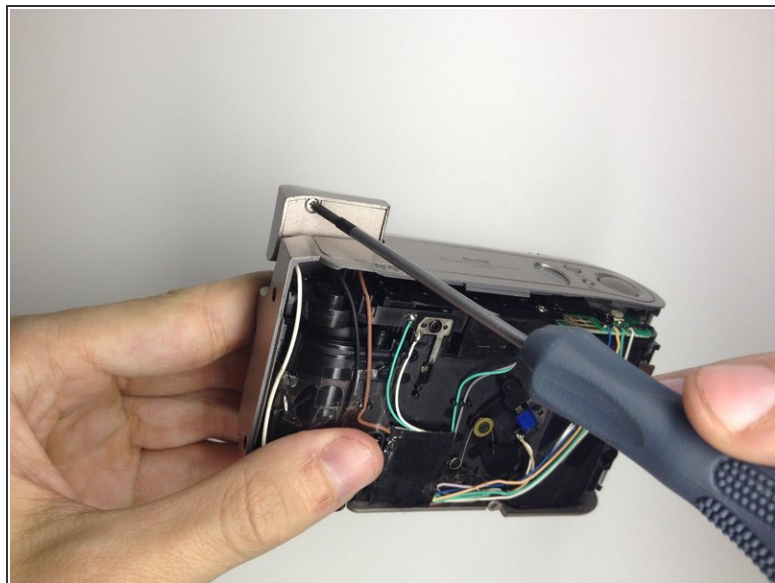
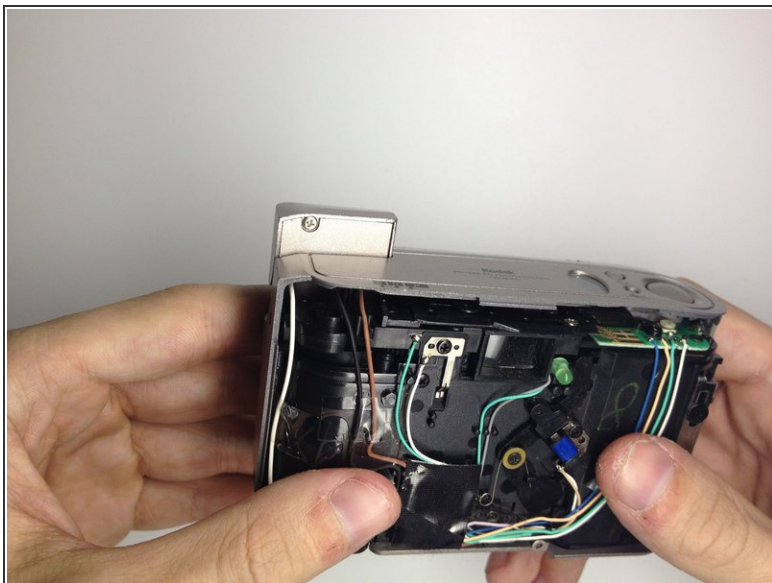
- Locate the 3 screws on the camera that hold the front cover of the camera to the camera body.
 - The first 2 are located on the bottom of the camera.
 - The last screw is located behind the flash module.
 - Turn the camera on, and raise the flash module to locate the flash module screw.

Step 8



- Remove the 2 screws at the base of the camera housing.
 - Use the Phillips #00 Precision Screwdriver and remove the screws.
 - Repeat this process for the screw behind the flash module.

Step 9



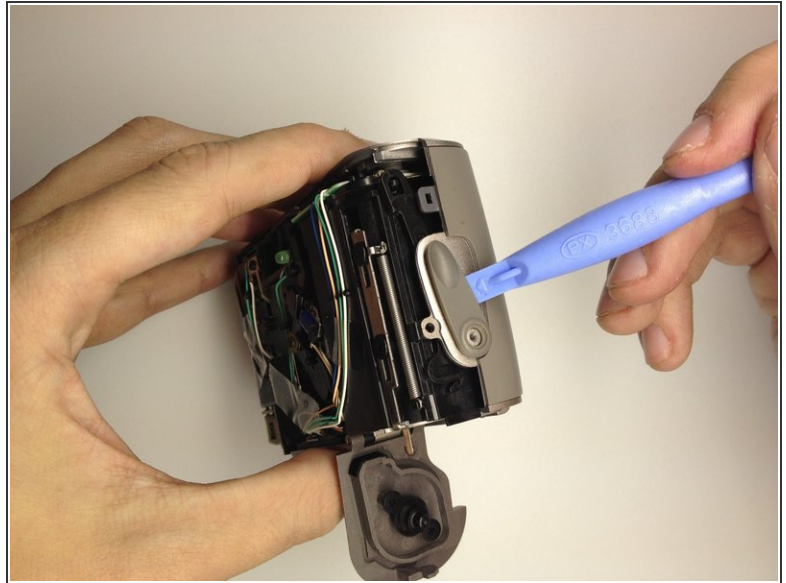
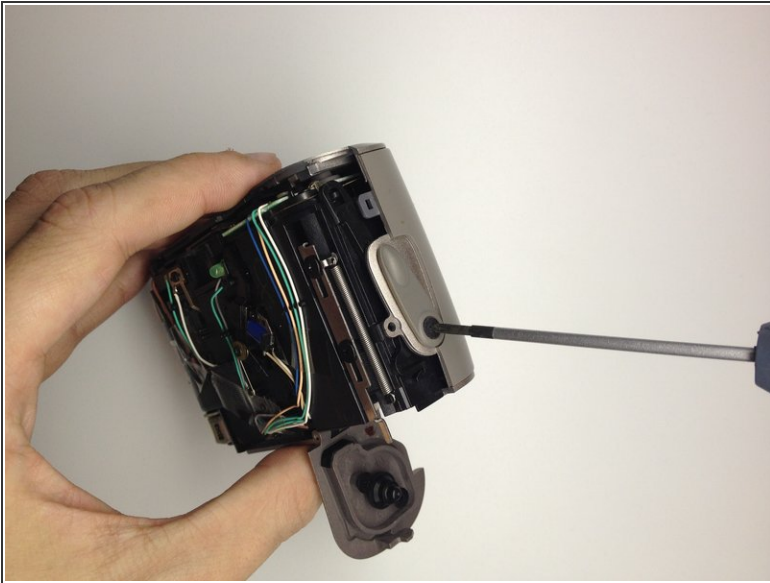
- Remove the screw located under the flash module using the Phillips #00 Precision Screwdriver.

Step 10



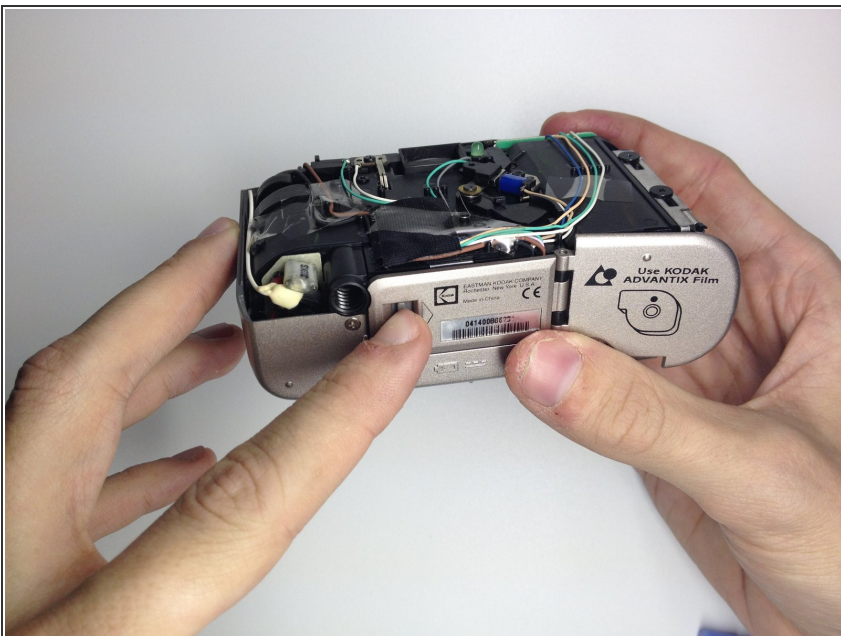
- Remove the flash cover.
 - Remove the flash module by twisting it up and outward of the camera housing.
 - The cover can now be removed.

Step 11



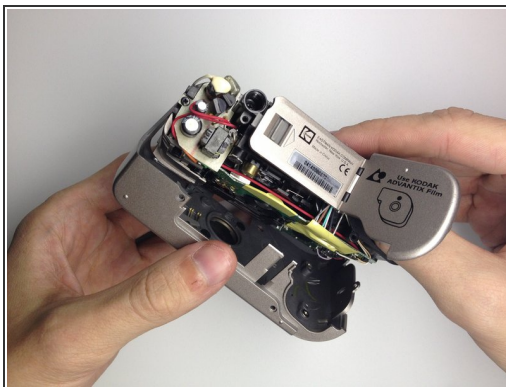
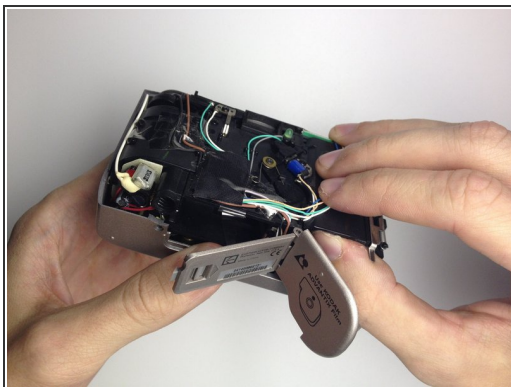
- Remove the film door lever.
 - Remove the screw holding the film lever in place by using a Phillips #00 Precision Screwdriver.
 - Using a plastic opening tool, gently pry the switch upwards to remove it.

Step 12



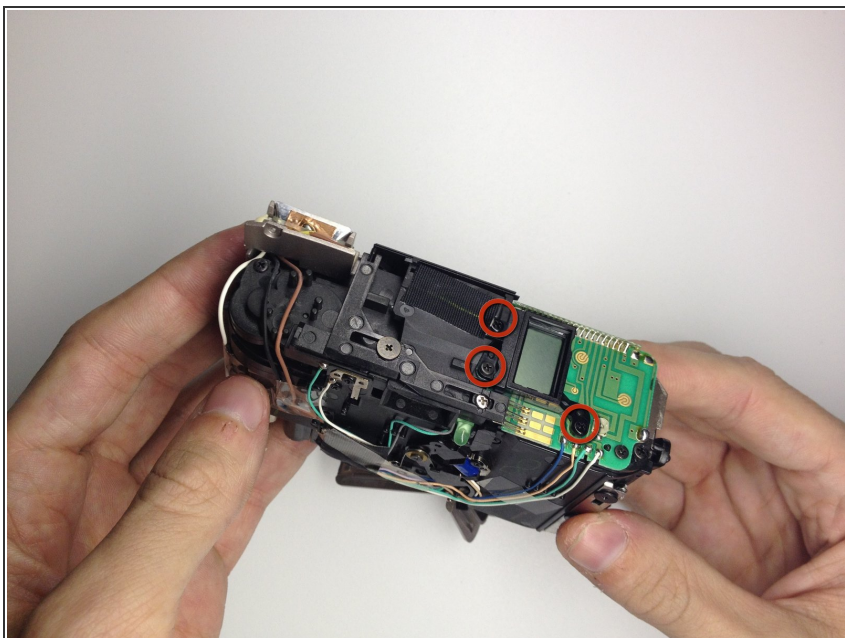
- Open the battery door by pushing the lever towards the arrow indicated.

Step 13



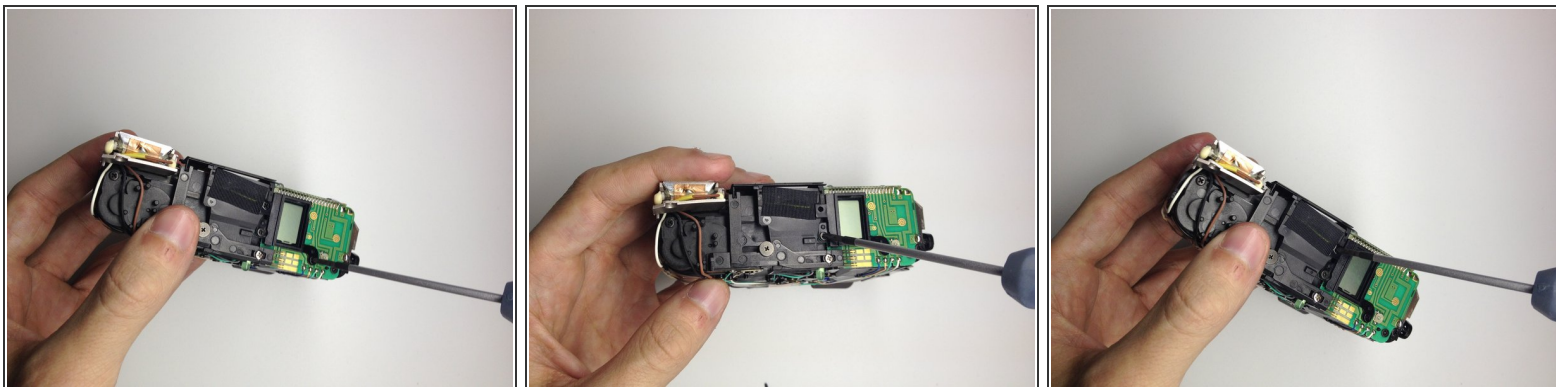
- Remove the front cover.
 - Insert your thumb in the film hole and gently pry the bottom loose.
 - Once the front is loose, gently pull it out.

Step 14 — Display



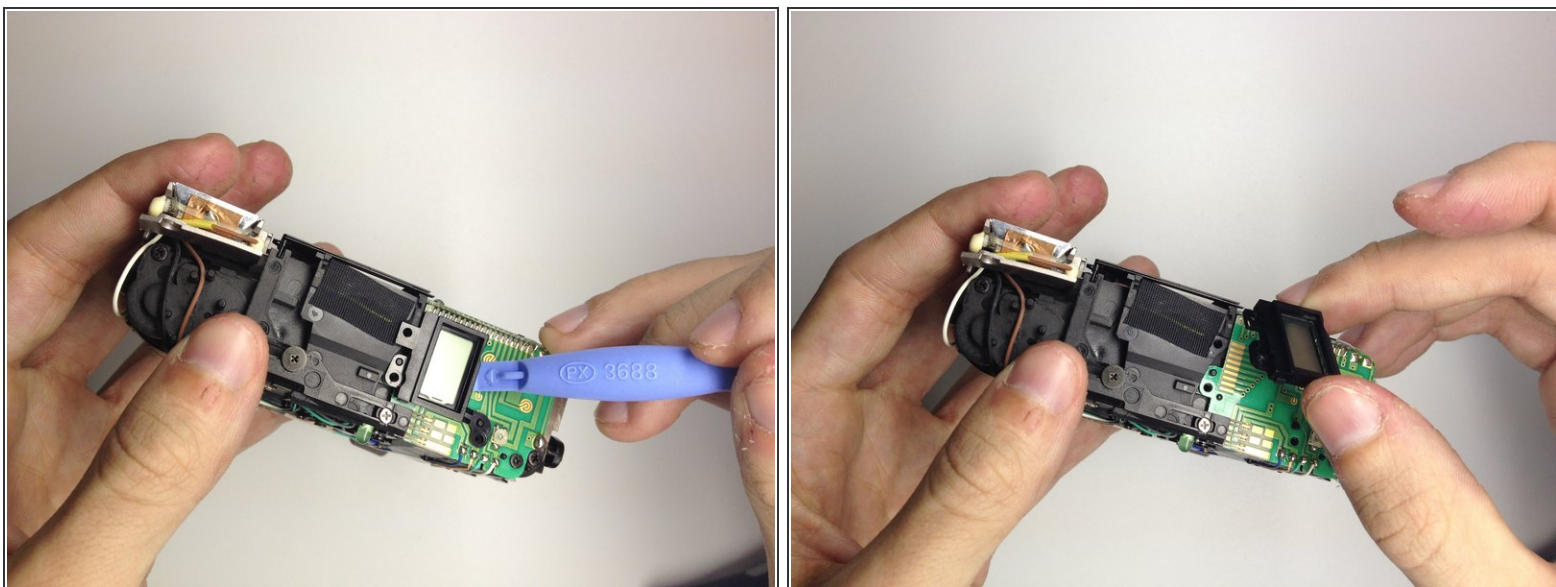
- Locate the 3 screws on the top of the camera.
 - These will be removed in the next step.

Step 15



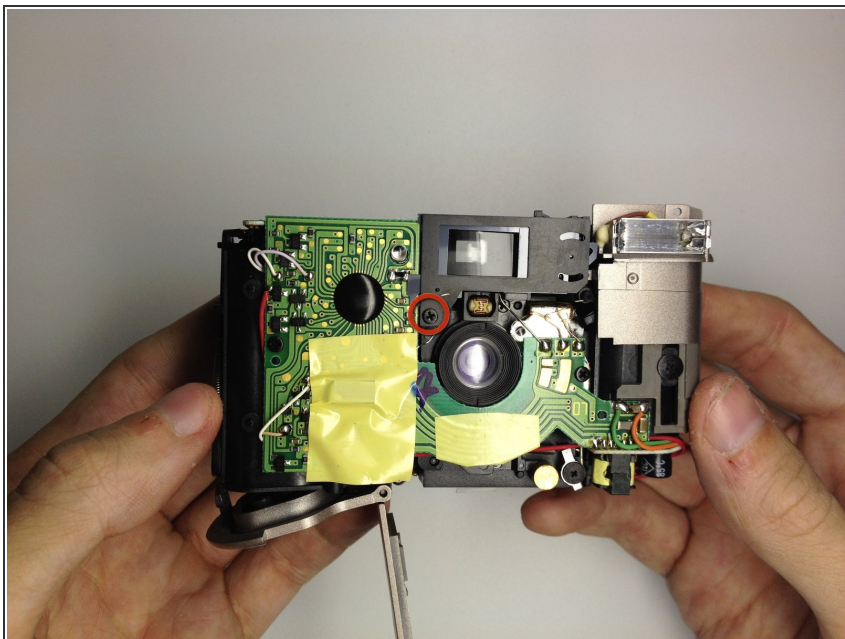
- Remove the 3 screws using the Phillips #00 Precision Screwdriver.

Step 16



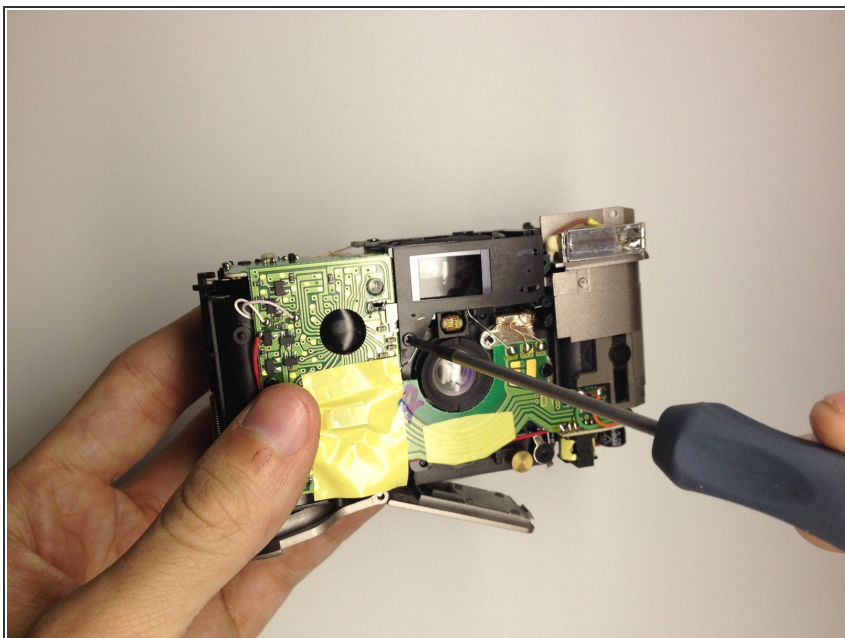
- Remove the LCD.
 - Gently pry the LCD and plastic bezel upward with a plastic opening tool.
 - Remove LCD and replace as needed.

Step 17 — View Finder



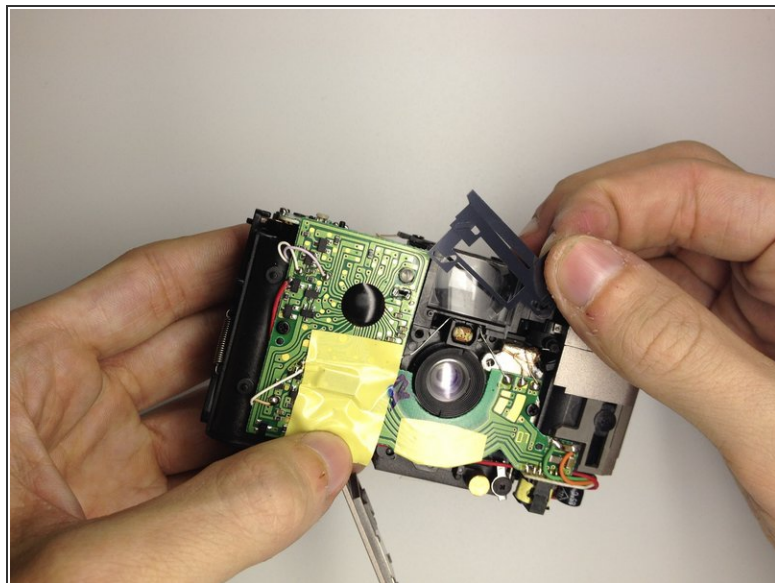
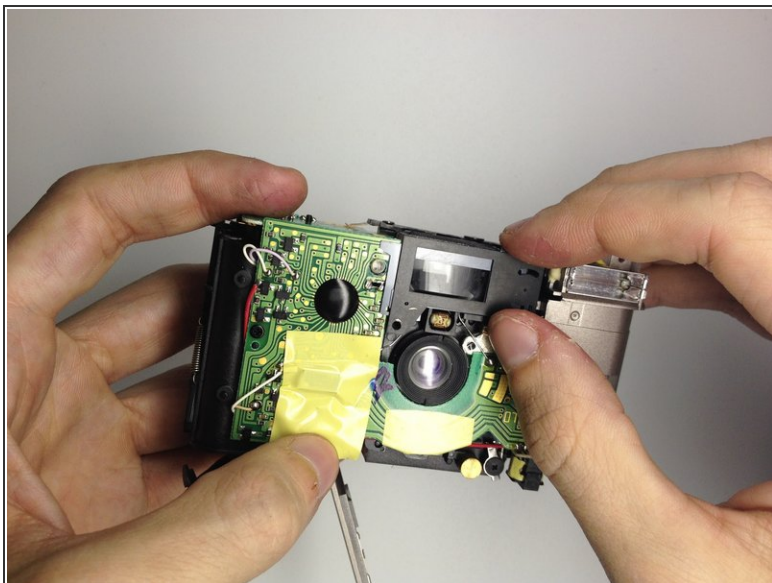
- Locate the screw on the front of the camera that holds the view finder assembly.

Step 18



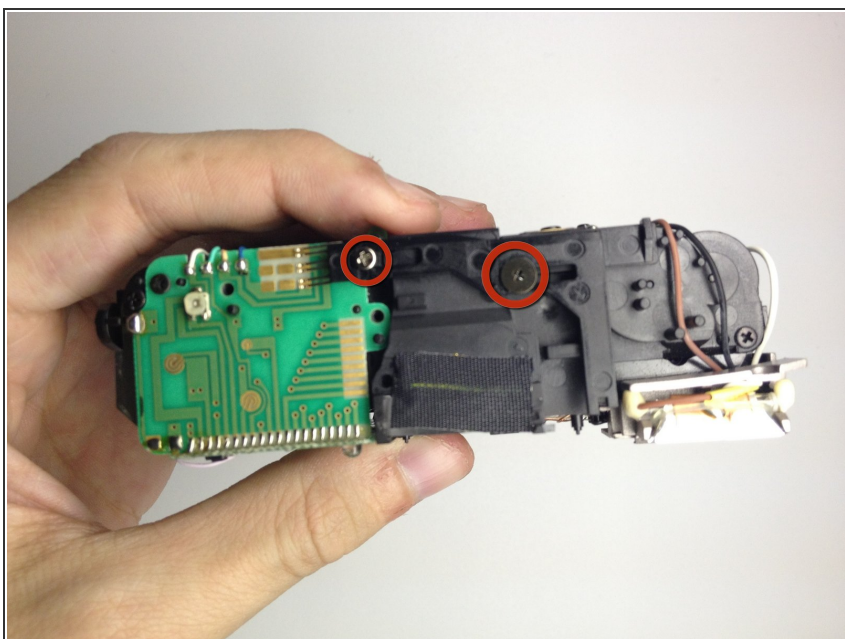
- Using the Phillips #00 Precision Screwdriver, remove the screw.

Step 19



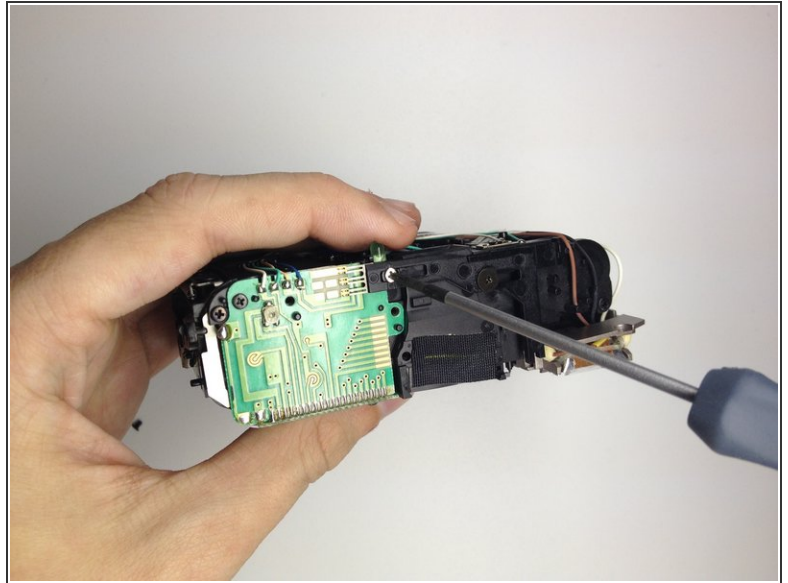
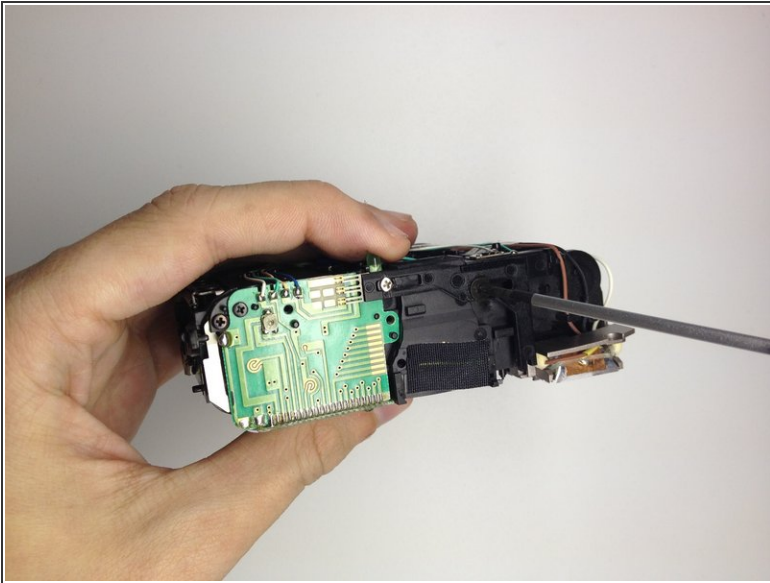
- Remove the 3 view finder covers.
 - The first one is metal and comes off easily.
 - The last two are plastic and tend to fall off, so gently remove them.

Step 20



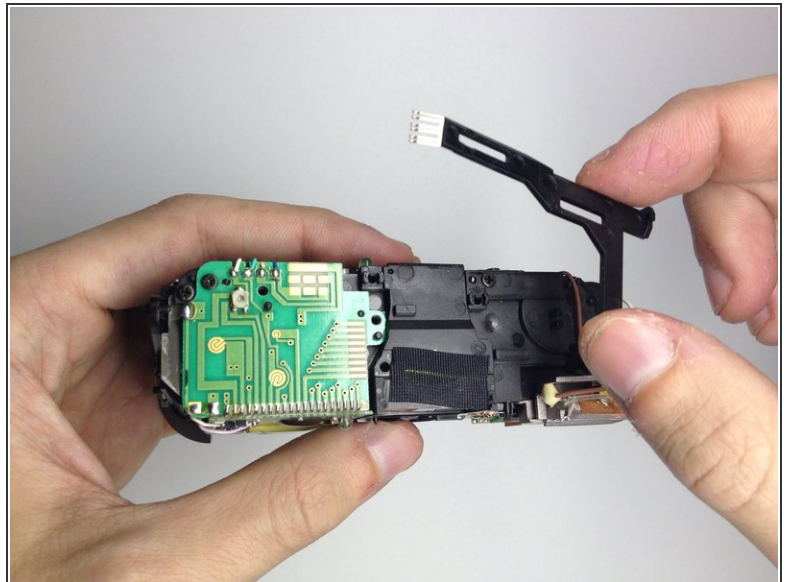
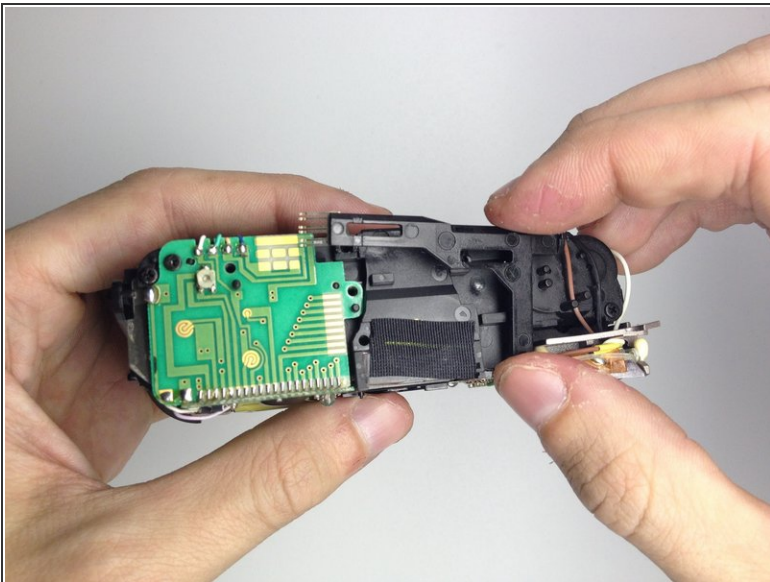
- Locate the 2 screws on the top of the camera.
 - These are holding the view finder assembly in place.

Step 21



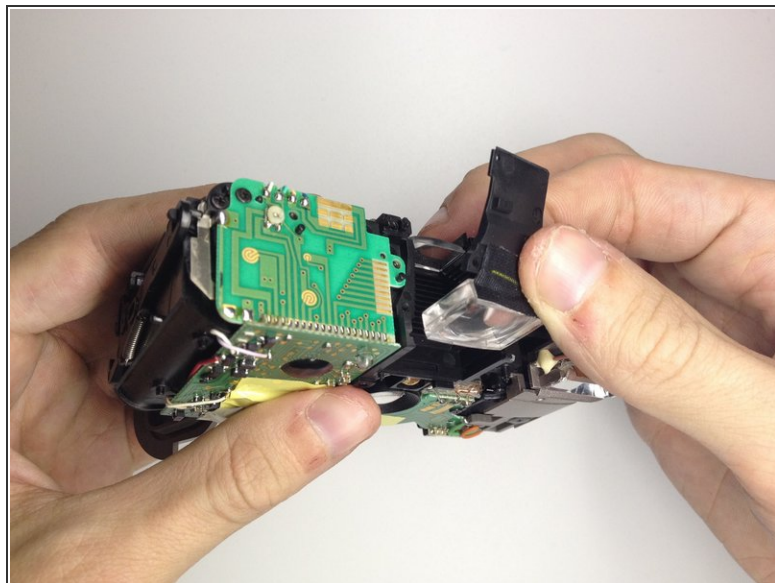
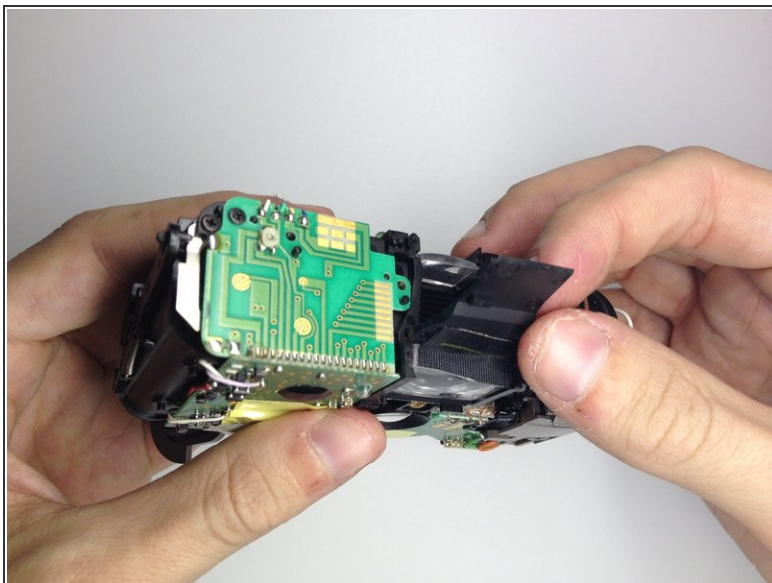
- Use the Phillips #00 Precision Screwdriver to remove the screws.

Step 22



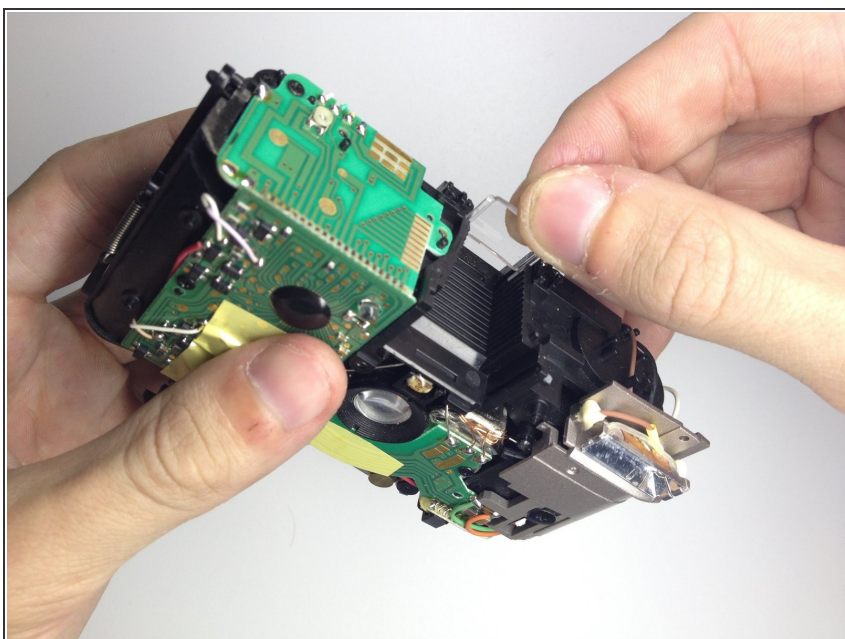
- Remove the mount holding the view finder in place.

Step 23



- Remove the front view finder.
 - Gently fold the plastic up from the back.
 - Pull up to remove the front view finder.

Step 24



- Gently grab the back view finder.
- Slide up to remove from camera.

To reassemble your device, follow these instructions in reverse order.