



# Disassembling LG 440G Rear casing

How to remove the LG 440G rear casing.

Written By: Emily Class



---

## INTRODUCTION

This guide shows how to disassemble the rear casing on a LG 440G to access the electronics.

This disassembly requires 2 tools, a Phillips #00 screw driver and an opening tool.

---

### TOOLS:

- [Phillips #00 Screwdriver](#) (1)
  - [iFixit Opening Tools](#) (1)
-

## Step 1 — Turn off phone.



- Power phone off by pressing and holding red button.

## Step 2 — Flip phone.



- Flip over phone to expose the rear.



### Step 3 — Rear cover removal.



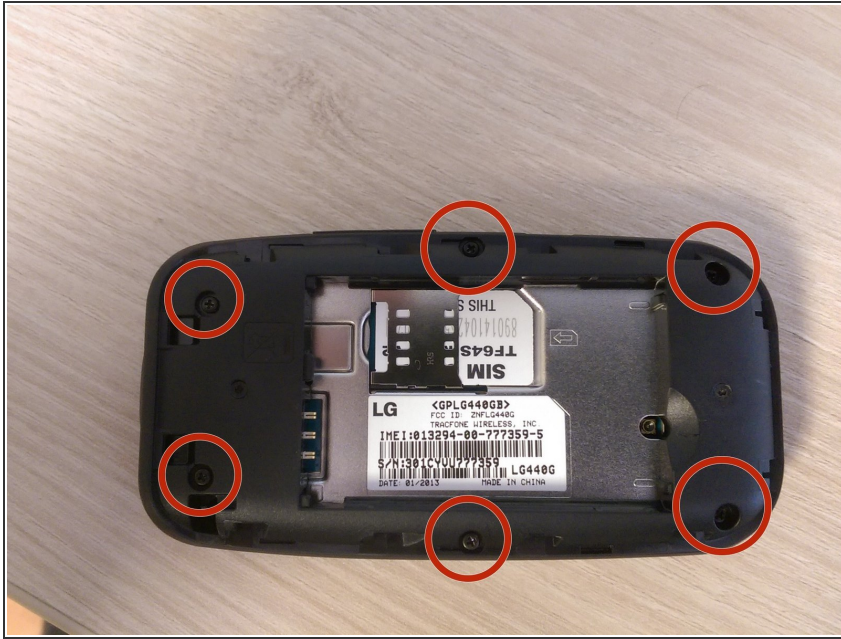
- Slide rear cover downward and lift off. You can now access the battery.

### Step 4 — Removal of battery.



- Gently lift battery from bottom. Battery should lift out easily.

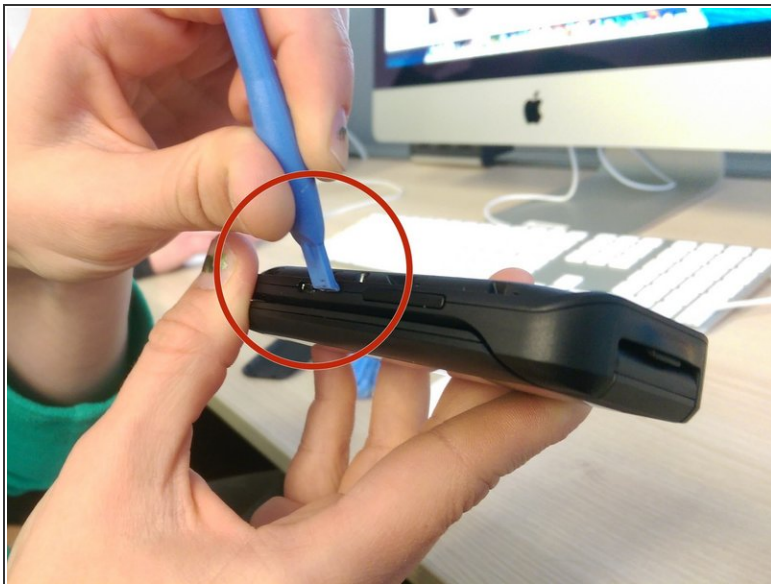
## Step 5 — Unscrew six screws along edges of casing



- Use a Phillips #00 screw driver to remove six screws.

ⓘ Save screws for reassembly.

## Step 6 — Lift casing cover



- Run the plastic opening tool along edge of phone to release the casing cover.
- Lift the casing cover.

To reassemble your device, follow these instructions in reverse order.