



Disassembling LG VX8550 Front Case

Written By: Nathan Jones



INTRODUCTION

Steps to remove the LG VX8550 front case



TOOLS:

- [iFixit Opening Tools](#) (1)
 - [Phillips #00 Screwdriver](#) (1)
 - [Push Pin](#) (1)
-

Step 1 — Battery



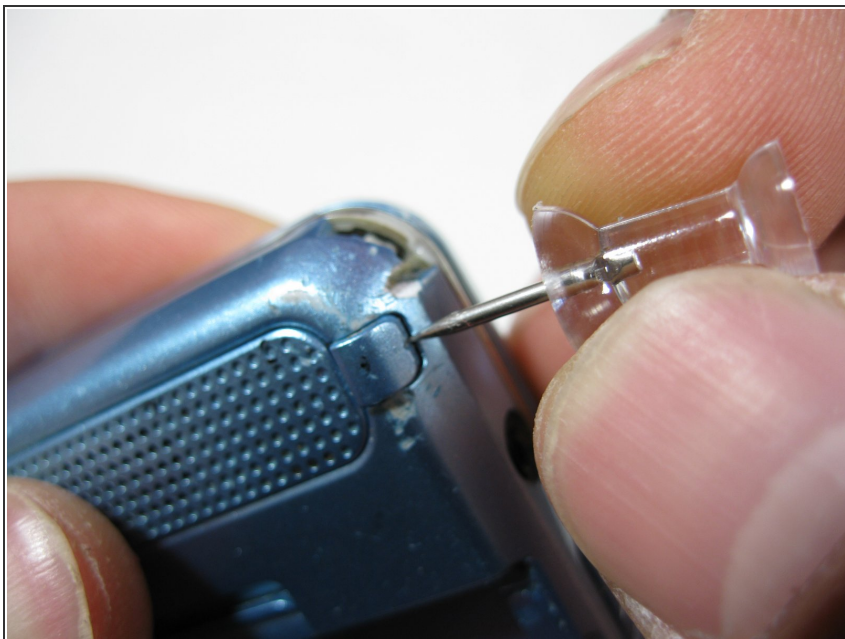
- Slide the battery release up.

Step 2



- Remove the battery by lifting away from the case.

Step 3 — Case



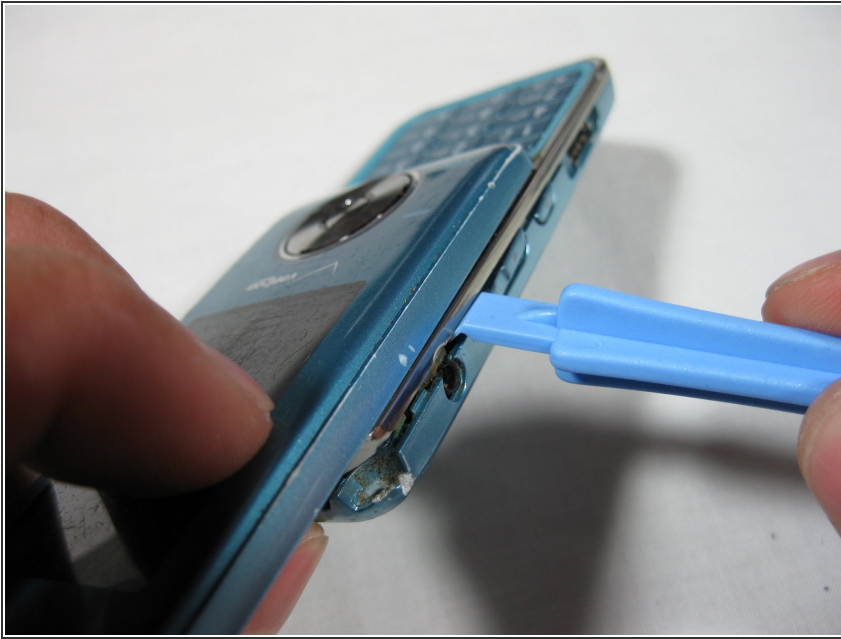
- Remove the 2 screw covers next to the rear speaker with a Push Pin.

Step 4



- Remove the 4 cover screws with a Philips #00 screwdriver.

Step 5



- Use the iPod opening tool to pry off the back casing.

Step 6



- Continue sliding the iPod opening tool around the seam of the casing to separate the front and back casings.

Step 7



- Separate the casing halves.

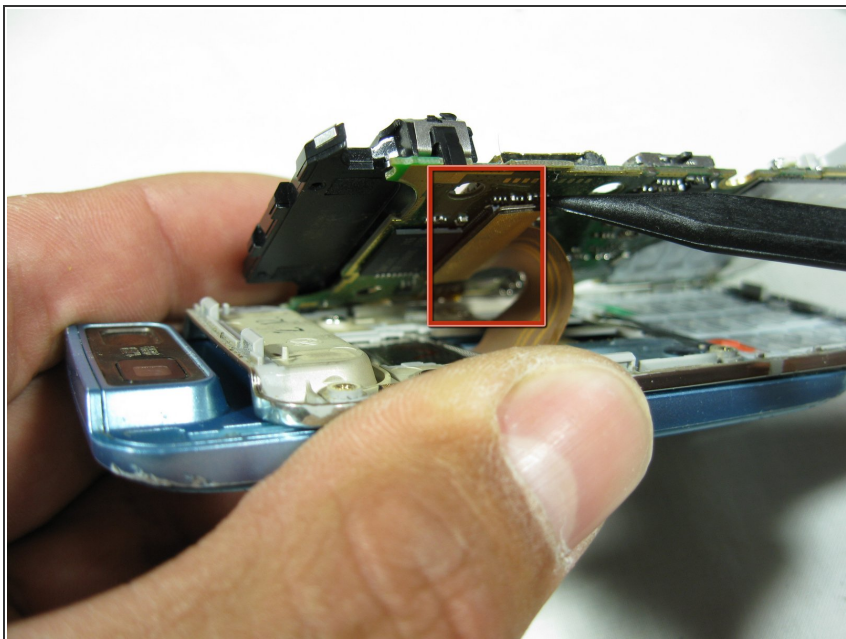
⚠ Be sure to keep track of the side buttons as they fall out.

Step 8 — Motherboard



- Remove the 2 screws from the back of the phone with a Phillips #00 Screwdriver.

Step 9



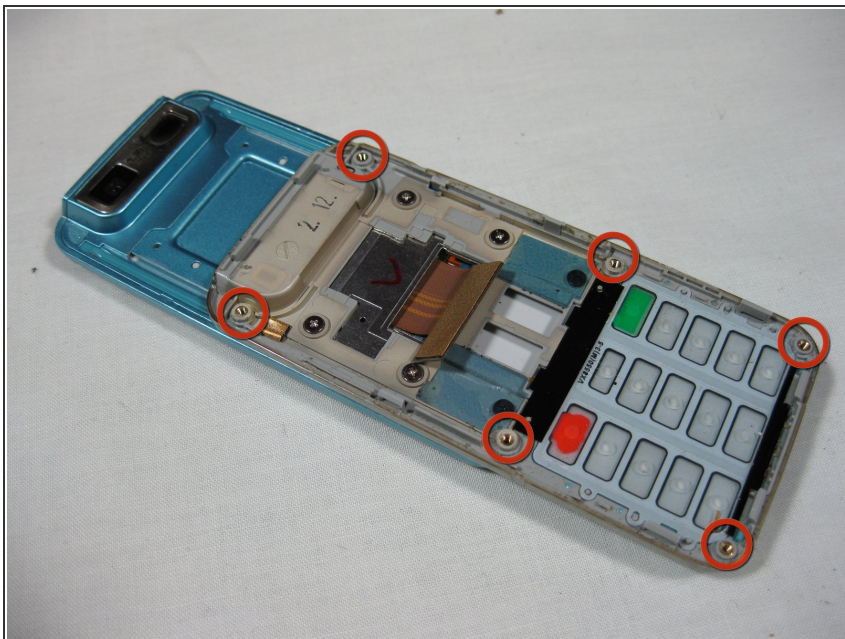
- Carefully lift up on the motherboard to see the ribbon cables underneath.
- Use the spudger to carefully disconnect the ribbon cable from the motherboard.

Step 10



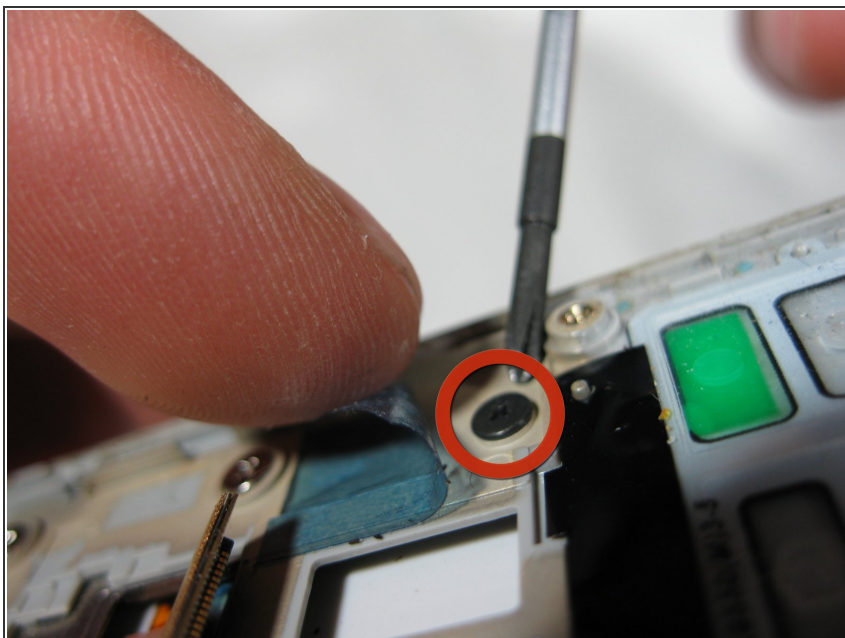
- Remove the motherboard from the front casing by lifting straight up.

Step 11 — Keypad Housing



- Lay the phone with the screen facedown.
- The 6 slider screws are visible.

Step 12



- Peel back but don't remove the blue tape to access the 2 center screws.
- Remove the 6 slider screws with the Phillips #00 screwdriver.

Step 13



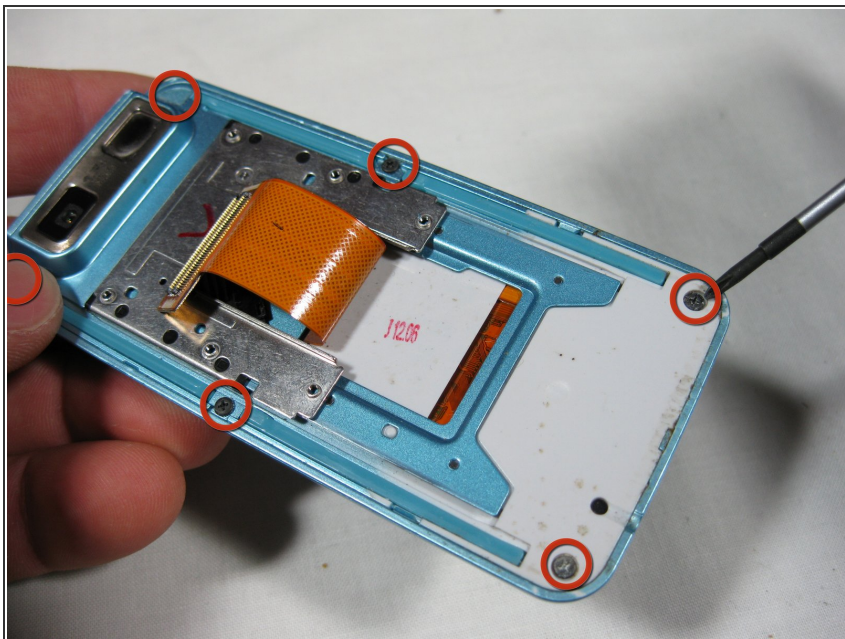
- Lift the keypad housing away from the slider.

Step 14 — Front Case



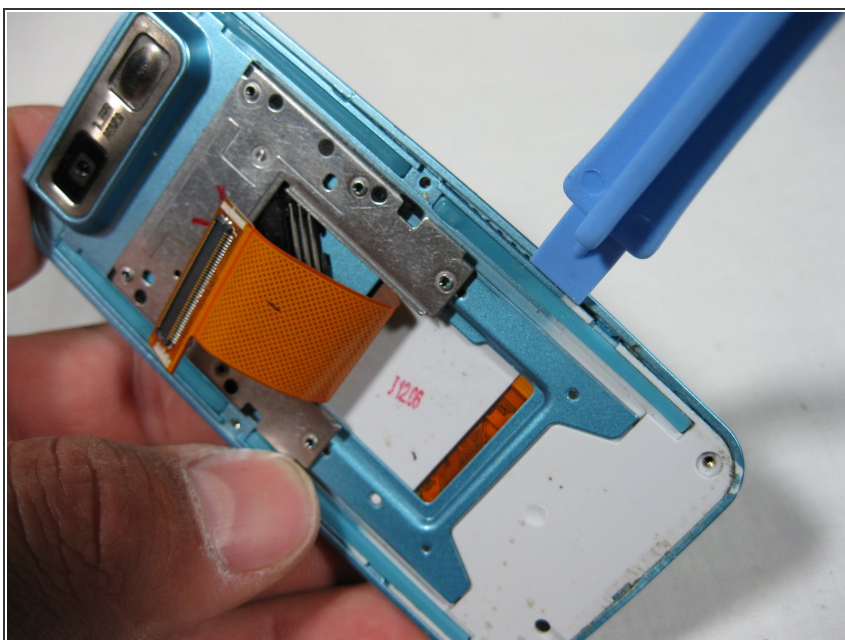
- Remove the 2 screw covers next to the speaker with a push pin next to the camera.

Step 15



- Remove the 6 screws with a Phillips #00 Screwdriver.

Step 16



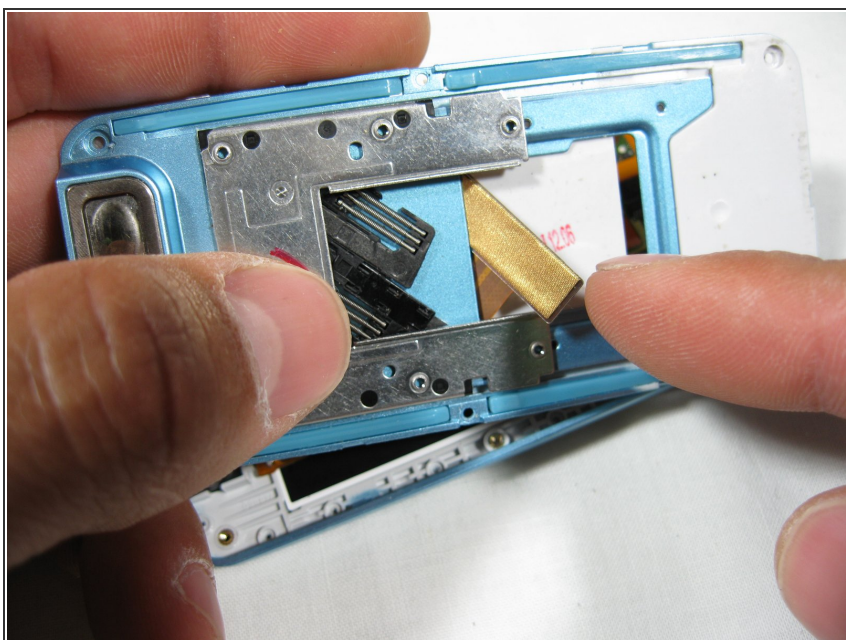
- Use the ipod opening tool to pry the screen casing and the slider mechanism apart from each other.

Step 17



- ⚠ Carefully lift the slider mechanism to see the ribbon cables underneath.

Step 18



- Slide ribbon cable through the slider mechanism.

Step 19



- Separate the two halves.

To reassemble your device, follow these instructions in reverse order.