



Disassembling LG Vu CU920 Bezel and External Casing

This guide will show you how to tear down the LG Vu CU920.

Written By: Gregory Davis



INTRODUCTION

This guide will show you how to disassemble the LG Vu completely in order to get access to the screen and speaker.



TOOLS:

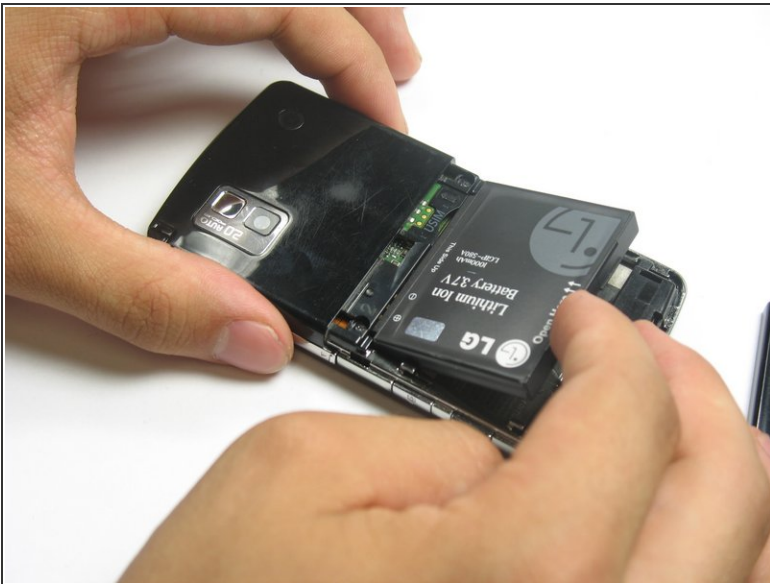
- [Phillips #00 Screwdriver](#) (1)
 - [iFixit Opening Tools](#) (1)
-

Step 1 — Battery



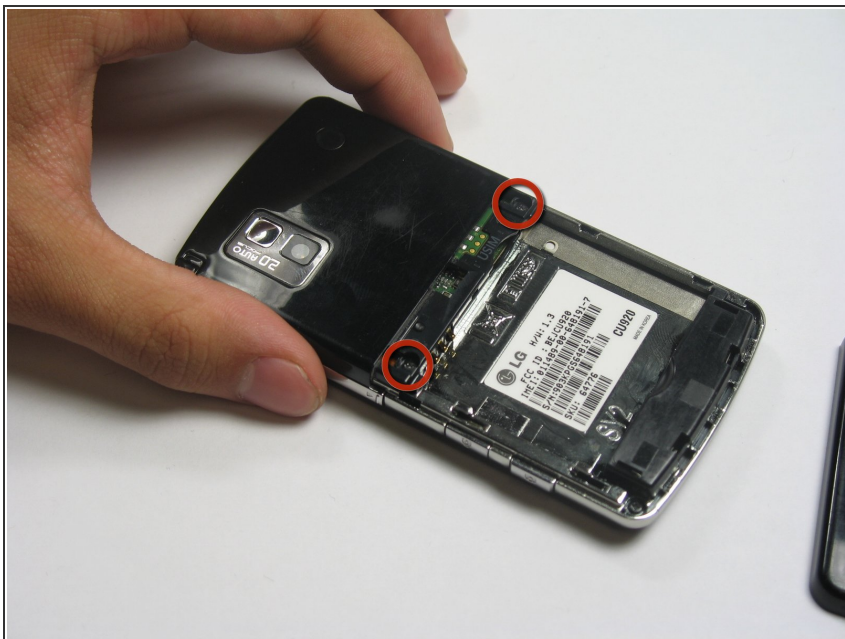
- Remove the back cover by firmly pressing against the indent on the back panel. Slide the cover downward and off the phone.

Step 2



- Remove the battery by placing your fingernail or an opening tool at the bottom edge of the battery and lift it out.

Step 3 — Motherboard



- Remove the two 3.5mm screws above the battery port with a Philips #00 screwdriver.

Step 4



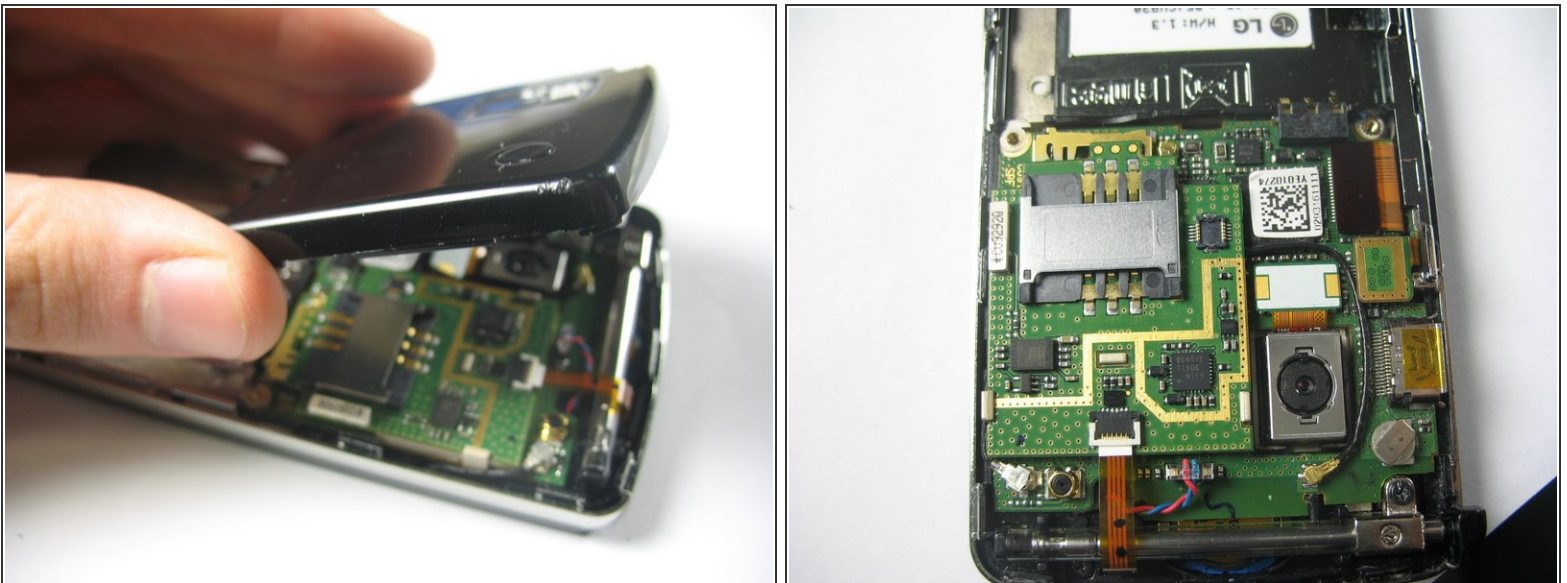
- Pull out the antenna to reveal a third screw.
- Remove the 3.5mm screw with Philips #00 screwdriver.

Step 5



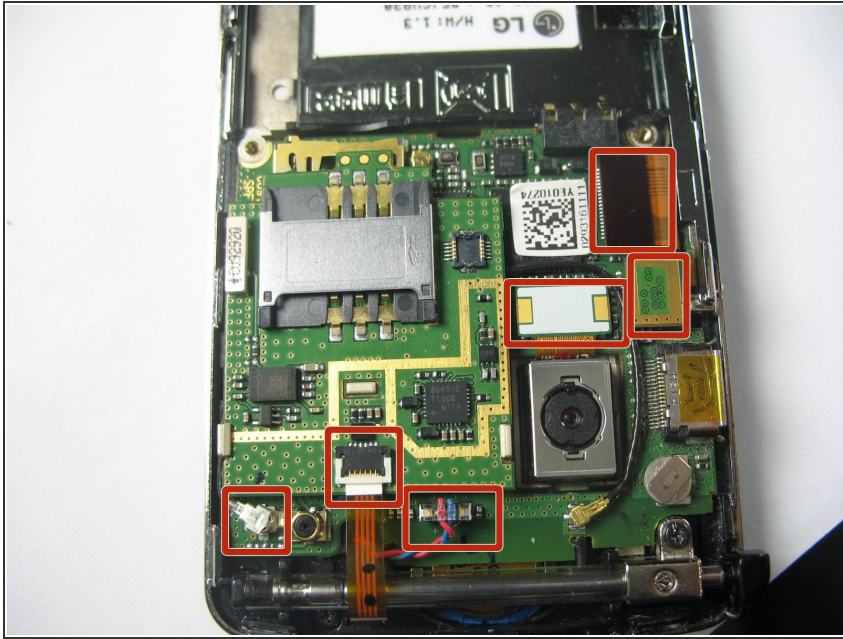
- Locate the plastic tab next to the charging port and use a plastic opening tool to gently pop it out.
- Use the plastic opening tool to pry up the edges of the plastic casing. You should be able to slide it around the edge to dislodge it.

Step 6



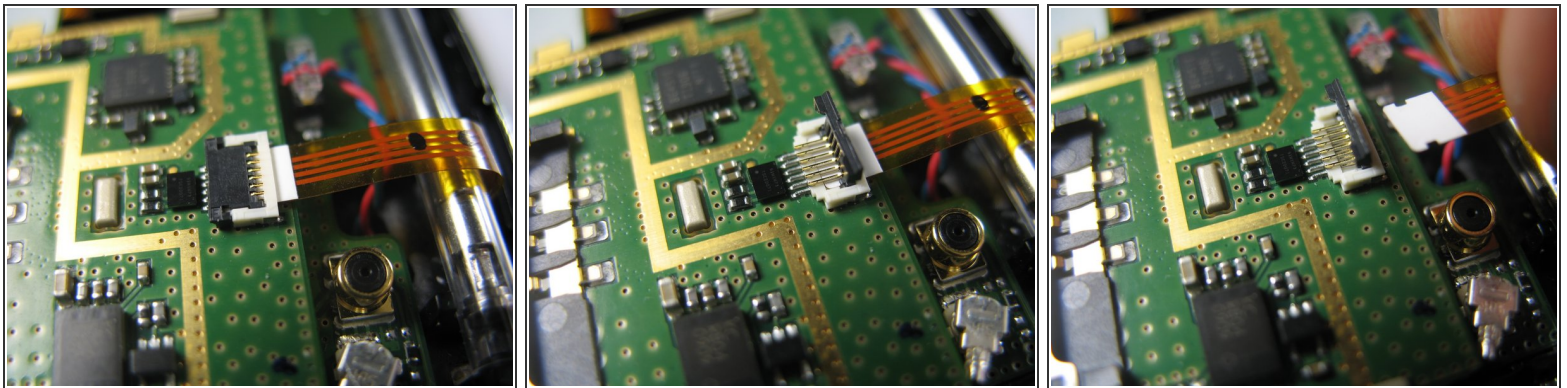
- Remove the plastic covering to reveal the motherboard.

Step 7



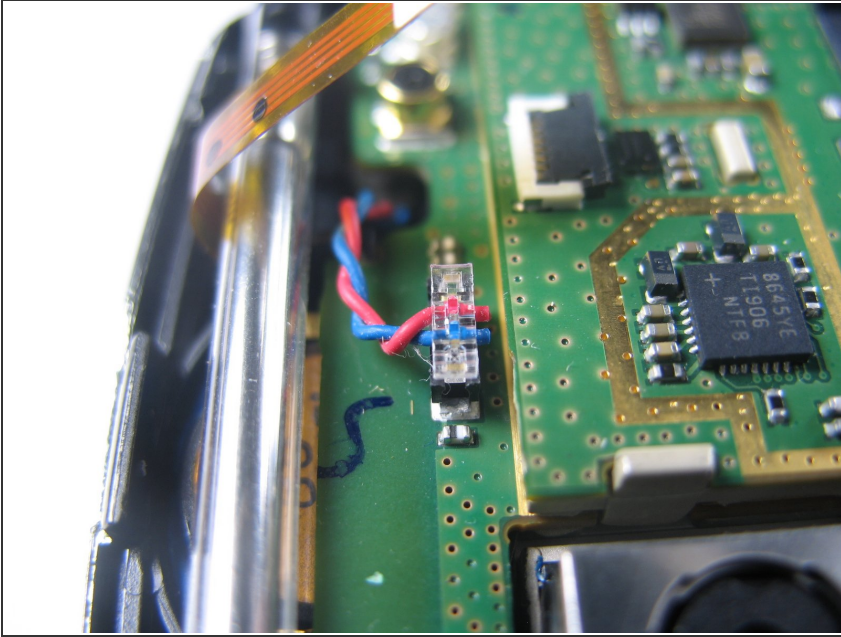
- Locate these six components on the motherboard. They must be detached before the motherboard can be removed.

Step 8



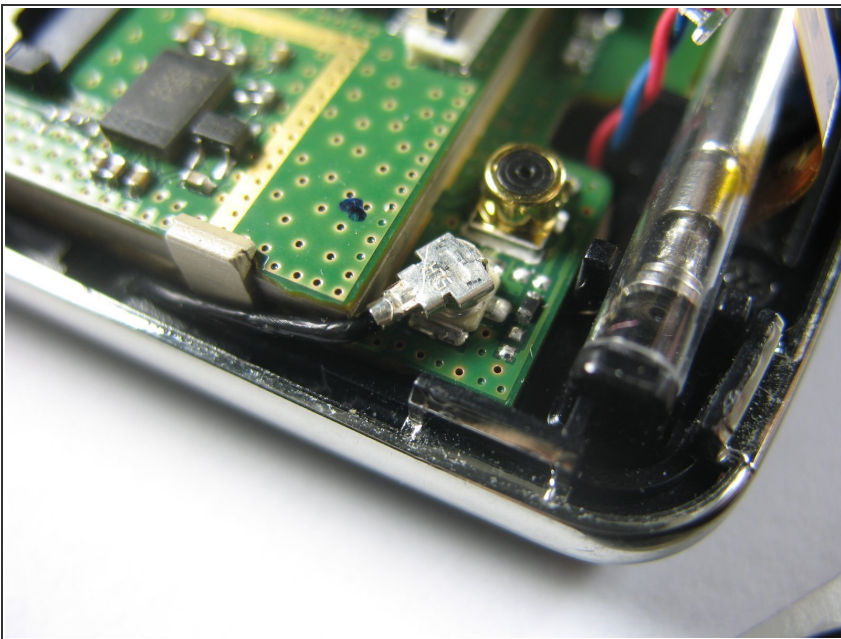
- Gently lift the ZIF connector (black tab) holding the ribbon cable in place. When it is in the upright position, the cable can be removed from the back side.

Step 9



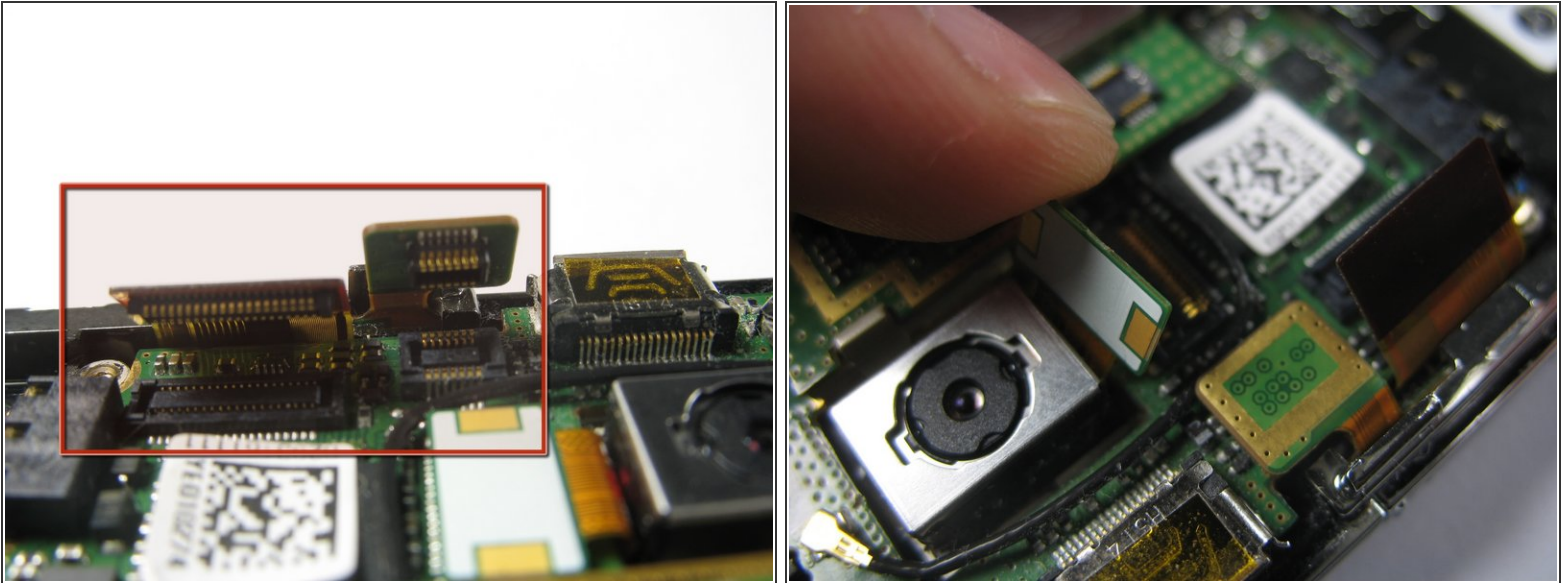
- Remove the jack attached to the red and blue wires by carefully pulling it upward from the motherboard.

Step 10



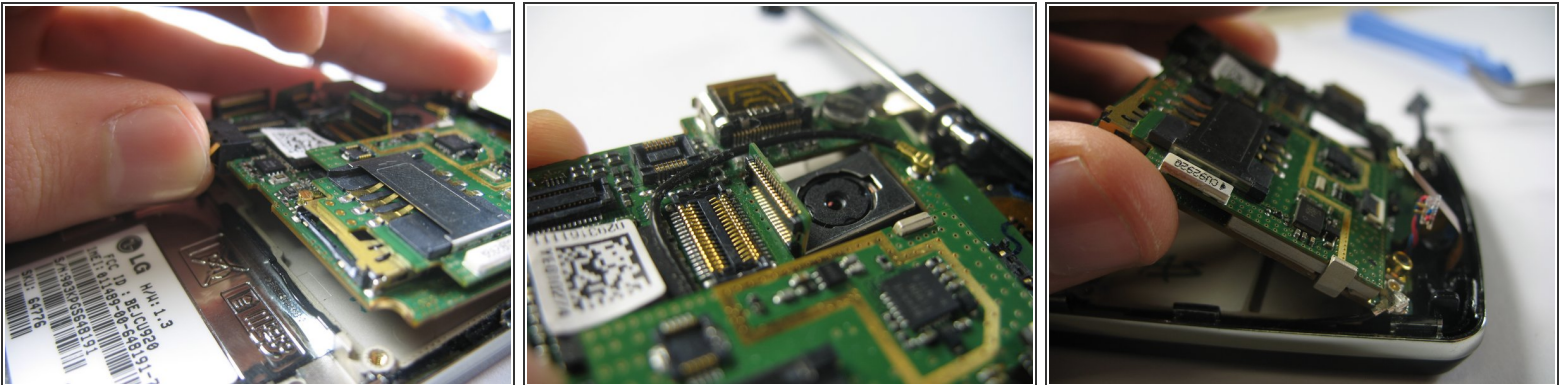
- Remove the round jack connected to the black cable by carefully prying it up from beneath with a spudger or plastic opening tool.
- ⓘ This jack snaps on, so there will be more resistance than there was with the previous jack.

Step 11



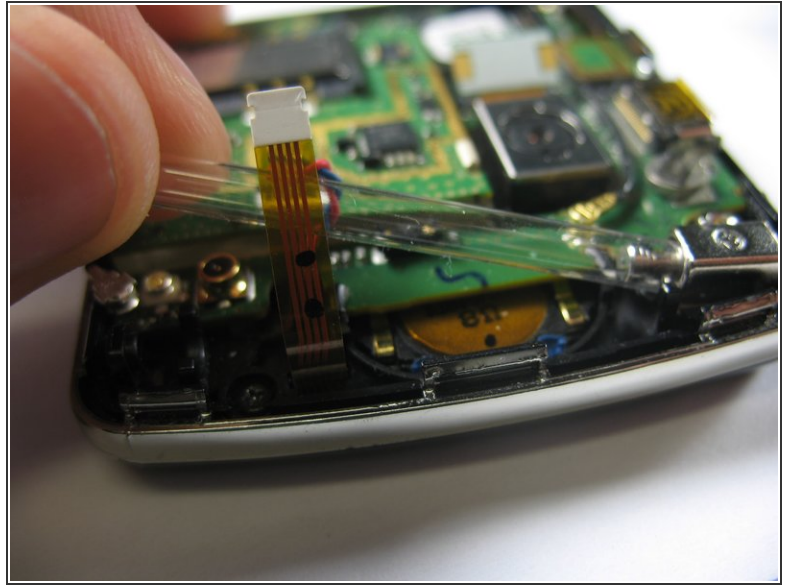
- The remaining three ribbon cables can be removed by gently lifting them by the ends opposite the cables with a plastic opening tool or spudger until they pop out.

Step 12



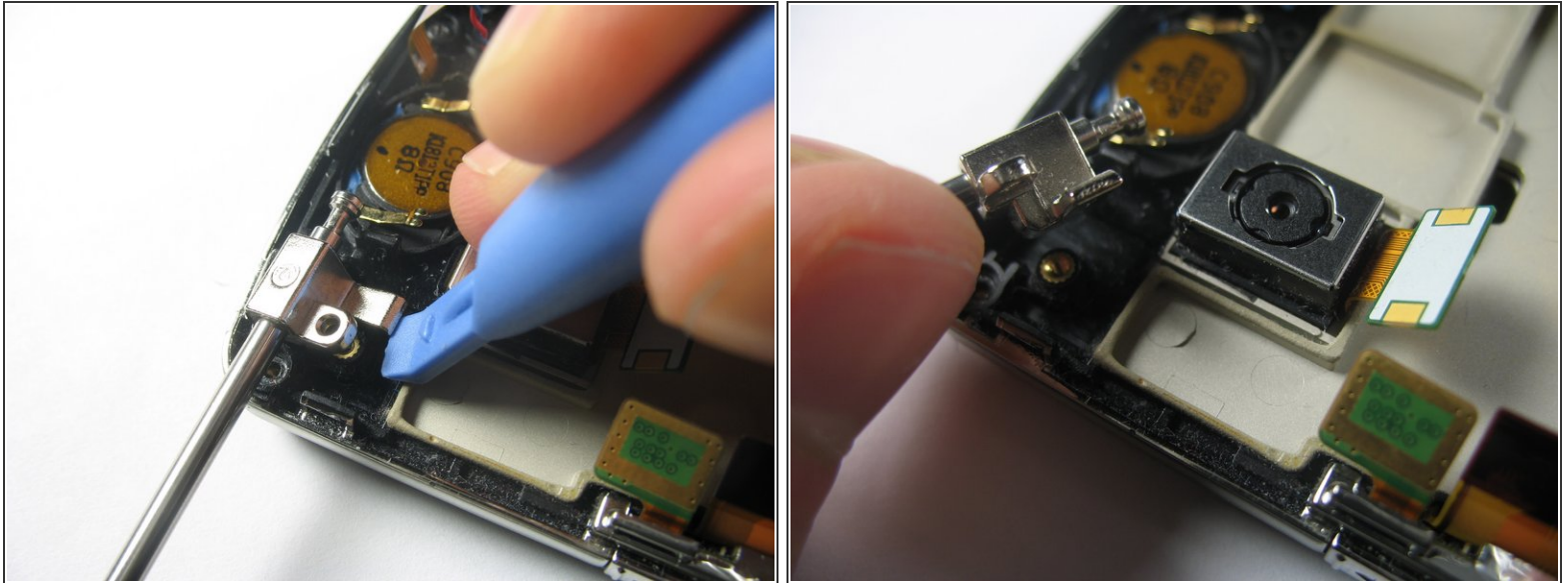
- To remove the motherboard, gently pry it up with your finger from the charging port.
- ⚠ Be careful not to yank the camera's ribbon cable as you lift the board. Make sure that it is in line with its hole in the motherboard.
- Once the board has been lifted, remove it by pulling it away from the connected edge.

Step 13 — Bezel and External Casing



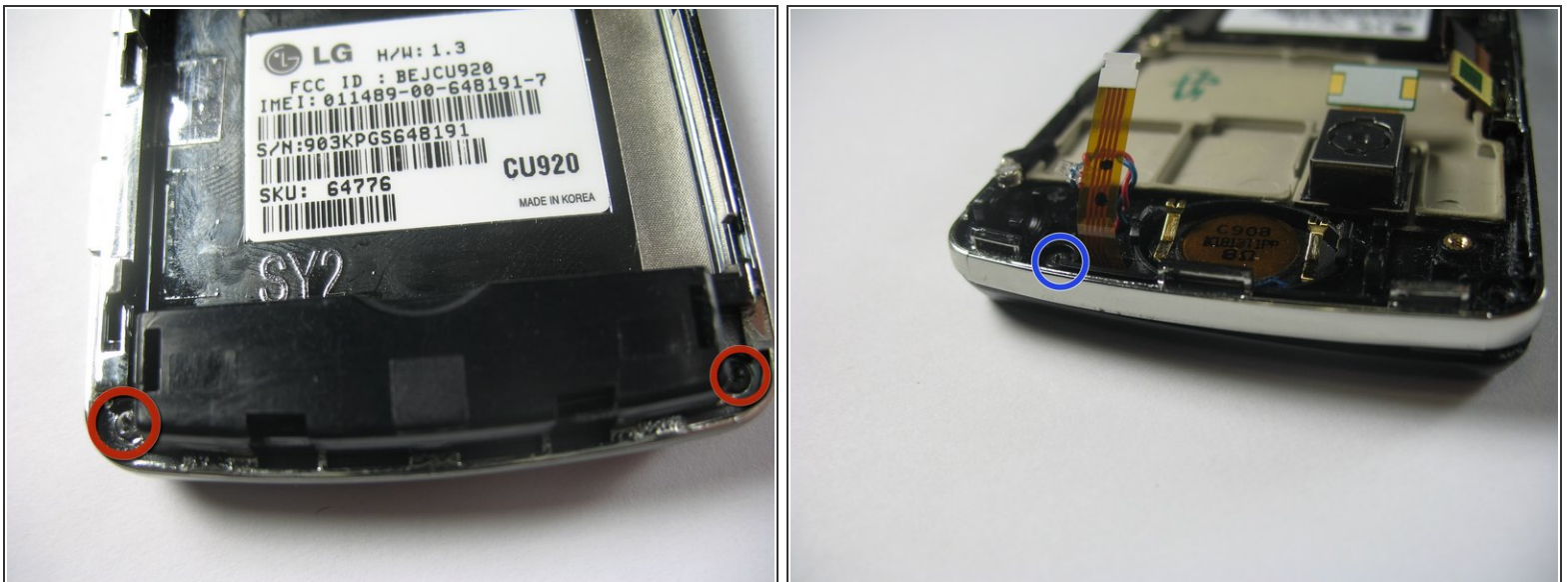
- Remove the 3.5mm screw holding the antenna guide in place with a Philips #00 screwdriver.
 - Slide the antenna out to the edge, and remove the plastic tubing by gently pulling it out from the opposite end of the antenna.
- i** This step can be done after the motherboard is removed, or before (as photographed).

Step 14



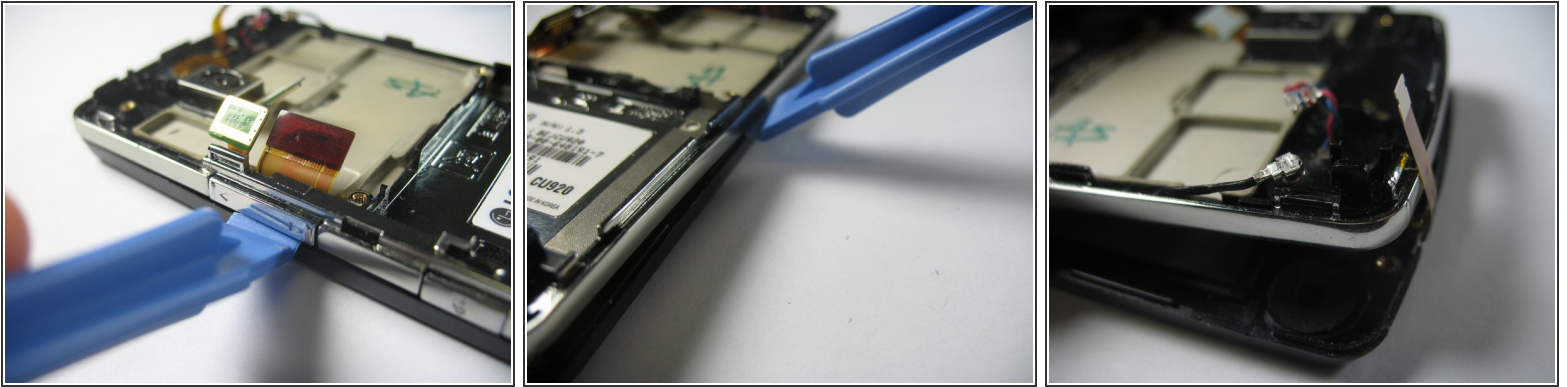
- Use a plastic opening tool to carefully pry up the metal antenna guide.

Step 15



- Using a Philips #00 screwdriver, remove the two 3.5mm screws on the bottom corners of the device.
- Remove the single 3.5mm screw located at the top next to the speaker's ribbon cable.

Step 16



- Insert a plastic opening tool below the volume rocker and gently pry the silver casing up. As with the plastic casing over the motherboard, you should be able to slide the plastic opening tool along the edge to remove it.

To reassemble your device, follow these instructions in reverse order.