



Disassembling LG420G Entire phone

Documentation of disassembly of the entire phone.

Written By: Anthony Aquino



INTRODUCTION

Documentation of disassembly of the entire phone.



TOOLS:

- [Tweezers](#) (1)
- [Phillips #000 Screwdriver](#) (1)
- [iFixit Opening Picks set of 6](#) (1)
- [Plastic Cards](#) (1)

Optional

Step 1 — Entire phone



- Start with gathering tools needed

Step 2



- Start with the back of the phone (the battery and cover has already been taken out.)

Step 3



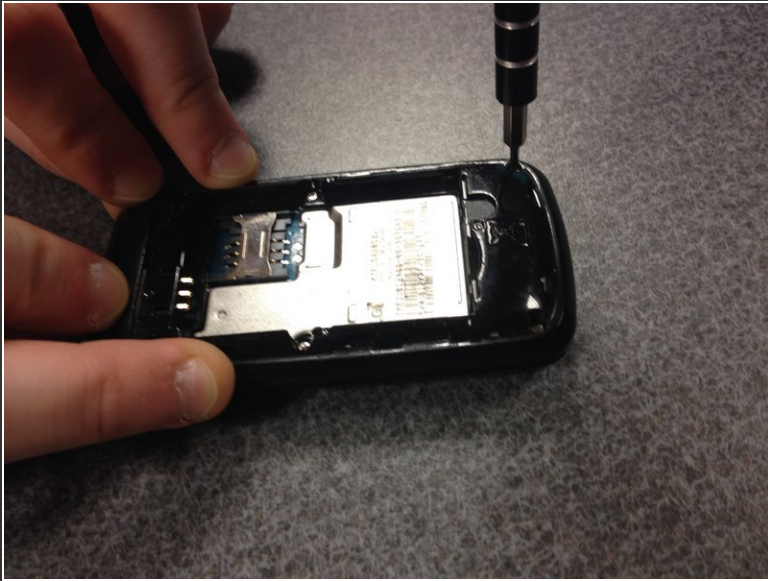
- Place finger to take out the sim card. Then take out sim card.

Step 4



- Locate Screws

Step 5



- Unscrew the six screws.

Step 6



- With tweezers, pry around the sides to expose the circuitry.

Step 7



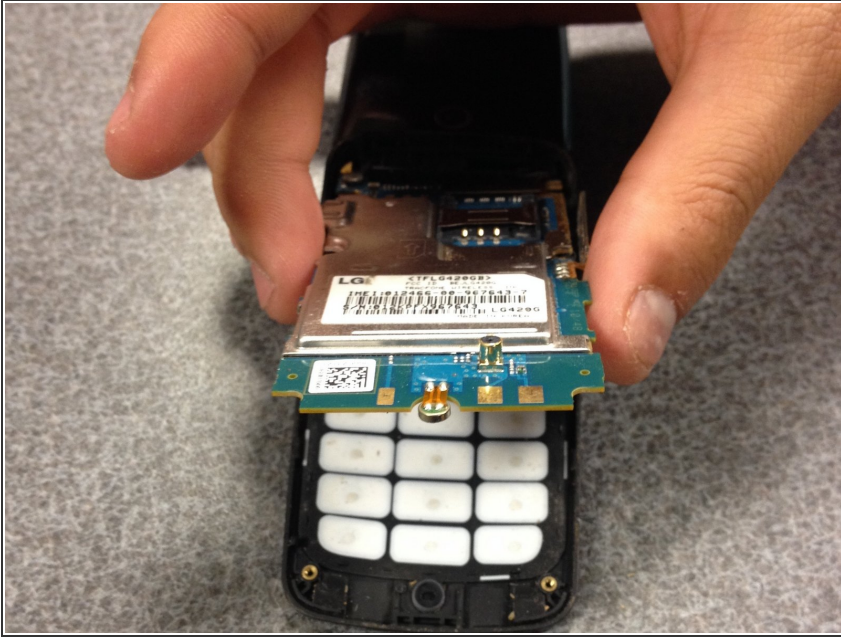
- Remove the back part of the phone to expose the layers inside.

Step 8



- Remove small parts from the sides.

Step 9



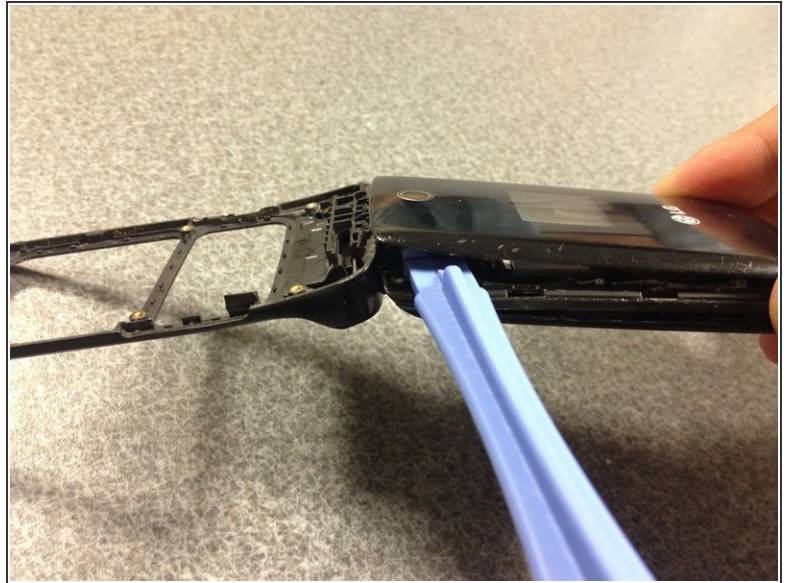
- Remove the layer connected with the keypad.

Step 10



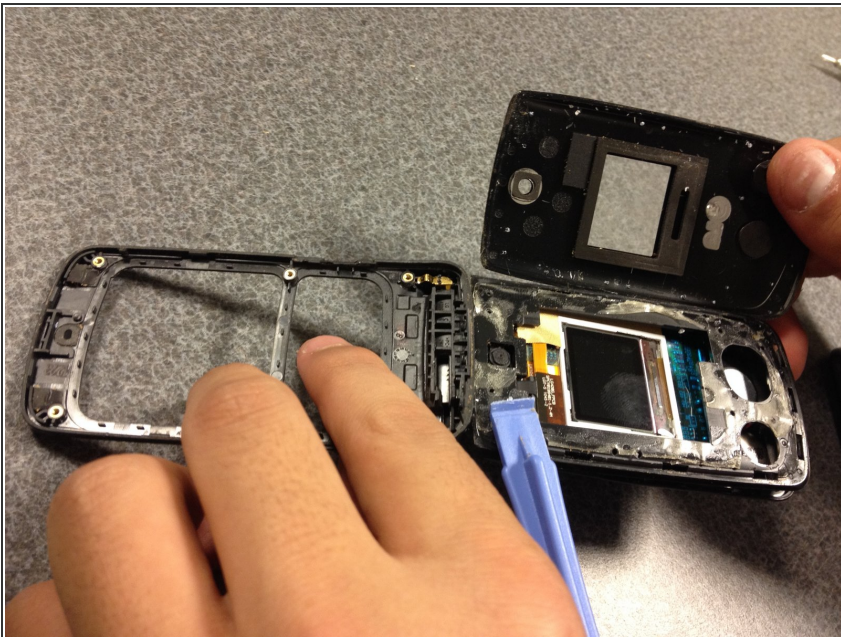
- Release the keypad from the phone frame.

Step 11



- With a prying tool, start opening the front face of the phone.

Step 12



- Remove the front cover, exposing the layers inside.

Step 13



- Pry open the glued layer.

Step 14



- Remove all loose part, and should result in the components shown in the picture.

To reassemble your device, follow these instructions in reverse order.