



Disassembling LaCie Starck Desktop Hard Drive

Hard Drive Replacement for all models of this device. Drives greater than 2TB are supported!

Written By: tj4





TOOLS:

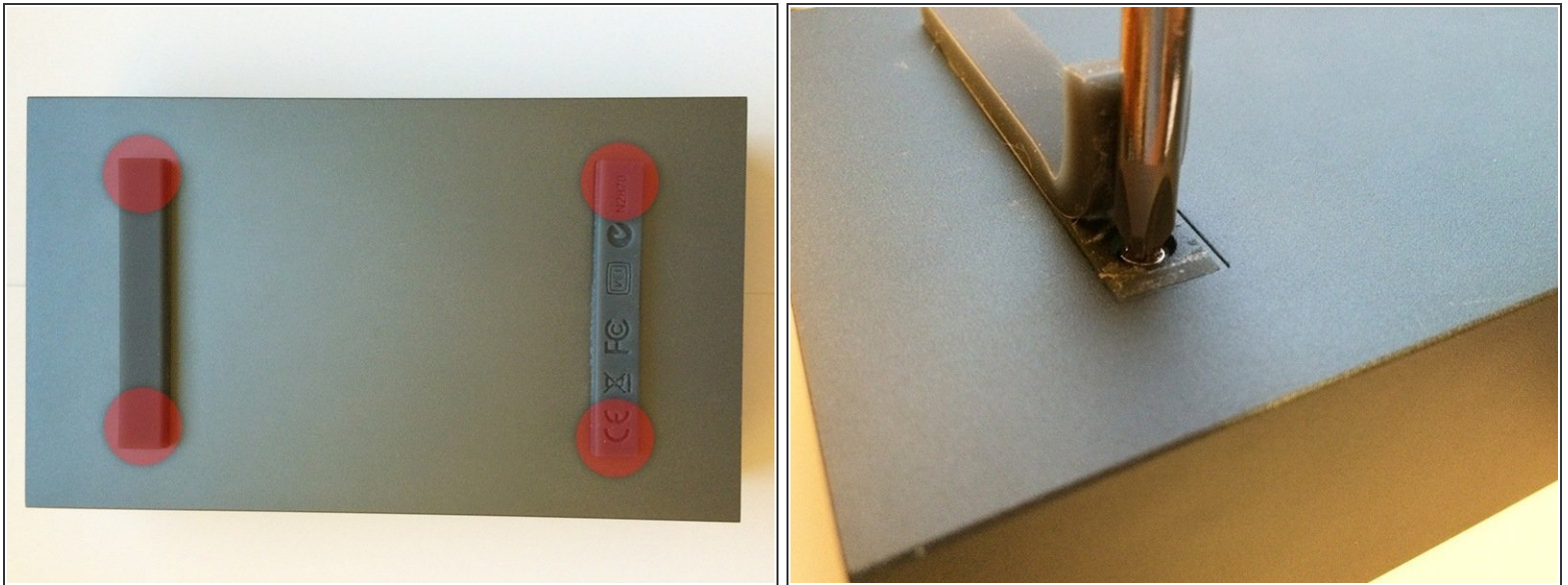
- [Philipps Screwdriver](#) (1)
-

Step 1 — Disassembling LaCie Starck Desktop Hard Drive



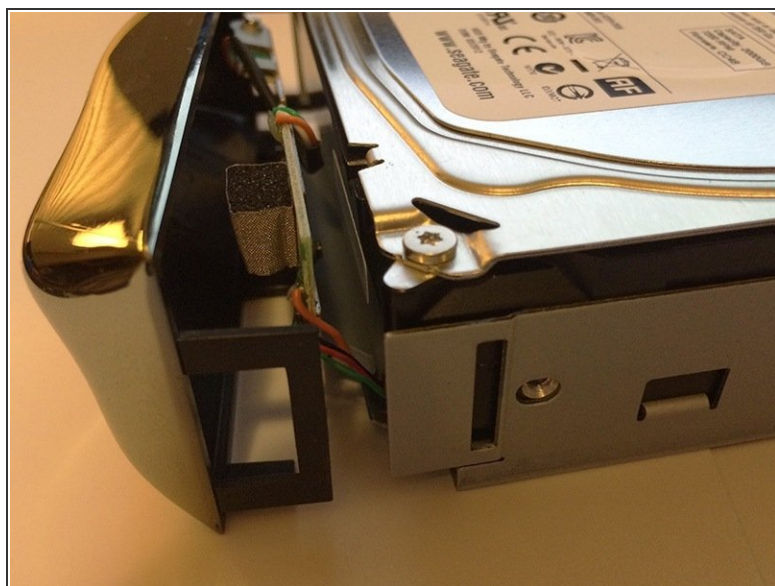
- The Lacie Stark External Drive is limited to USB 2.0 and was available in several sizes up to 2TB. This model will recognize drives greater than 2TB. My replacement drive for this is a 3TB.
- All you need is a standard phillips screwdriver.

Step 2



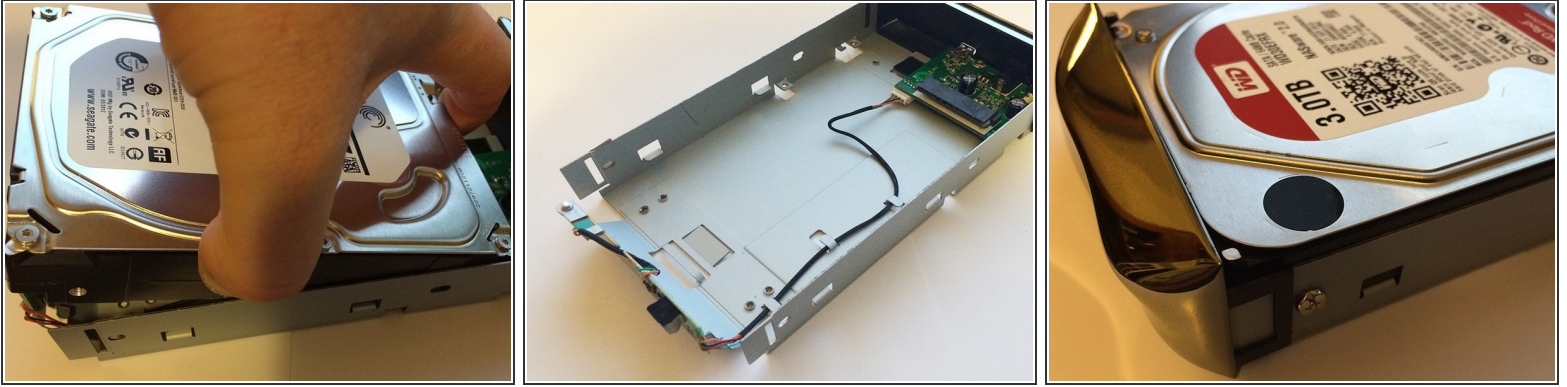
- Making sure the unit is unplugged from the power and USB, turn the unit over.
- Carefully lift up on the rubber feet on all 4 ends. You do not need to completely remove the feet, you only need to be able to access the (4) screws on each end.

Step 3



- Slide the drive cartridge out from the front end and flip it over. The front and back bezels are removable, but only the front removal is necessary to replace the drive. (The end marked with the "+" LED, also the back side of the hard drive.) As with all drives there are (4) easily accessible screws that need to be removed.
- The front bezel is held on by (2) plastic tabs on both sides and a plastic tab centered under the unit. Gently pull back on both sides to remove the bezel. This will give you the room to remove the drive from the carrier.

Step 4



- The drive needs to be pushed back, off the data connection and up to be removed. Some wiggle movement is required.
- You can now replace the drive. Please reverse these steps to re-assemble. Important: Re-Assembly of the front Bezel does require you to have it centered on the carrier. Do not try and attach it one side at a time, breakage will likely occur if you do this. There is a center tab on the underside that has to be lined up!
- Note: This unit has served me very well. It has been in an always-on state for over 2 years. Replacing my drive was purely an act of preventive maintenance. It is also nice to find that drives over 2TB are supported with this device!

To reassemble your device, follow these instructions in reverse order.