



# Disassembling Logitech M305 Wireless mouse

This will help you tear down and access the inside of the Logitech M305 mouse.

Written By: Darren





## TOOLS:

- [Phillips #00 Screwdriver](#) (1)
  - [Spudger](#) (1)
-

## Step 1 — Disassembling Logitech M305 Wireless mouse



- M305 Wireless mouse

## Step 2



- Turn mouse over to reveal the battery cover removal button.



### Step 3



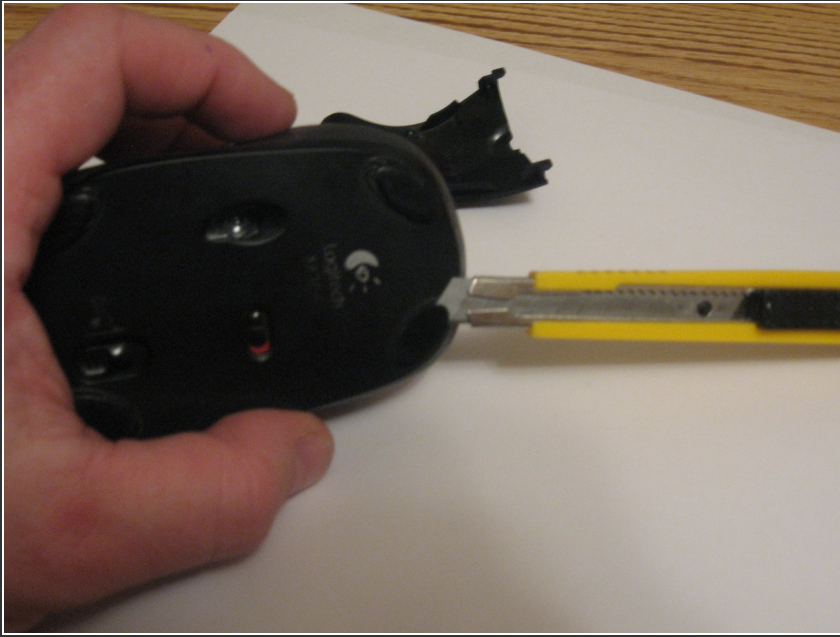
- Slide the button back and then release in over to remove battery cover on the top of mouse.

### Step 4



- Remove small top access screw.

## Step 5



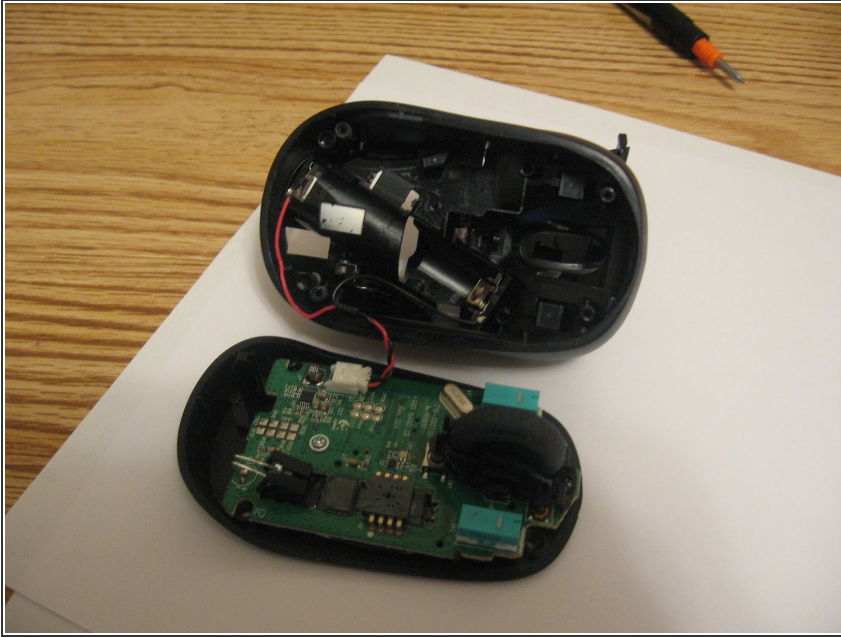
- Remove (gently) sticky pads with the spudger or a sharp knife/cutter.

## Step 6



- After removing all four sticky pads, unscrew the four screws. One screw for each hole.

## Step 7



- Once screws are removed, the top comes off, but be careful not to pull too hard because of the attached wires.

To reassemble your device, follow these instructions in reverse order.