



# Disassembling Logitech MBJ58 Mouse Scroll wheel from mount

You will part the scroll wheel from the mount.

Written By: Maximilian Betkowski



---

## INTRODUCTION

You will learn how to remove the scroll wheel from mount.



### TOOLS:

- [Phillips #1 Screwdriver](#) (1)
-

## Step 1 — Top cover



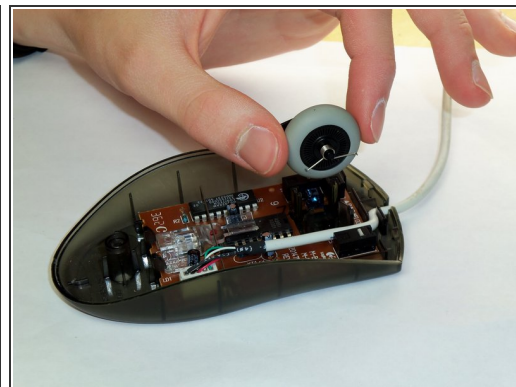
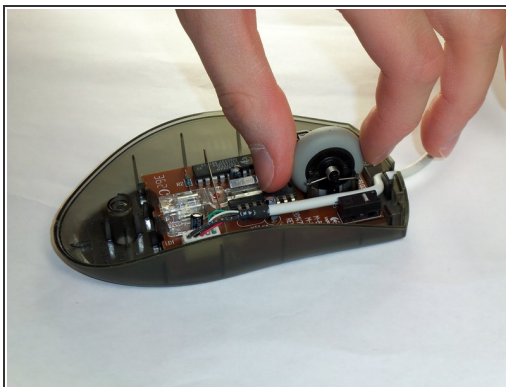
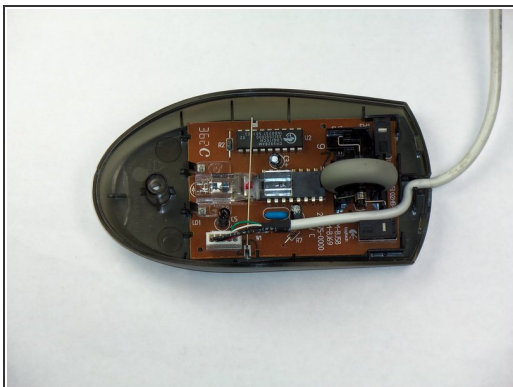
- Hold the mouse so that the bottom is facing up.
- Remove the Phillips #1 screw from the bottom half of the mouse.

## Step 2



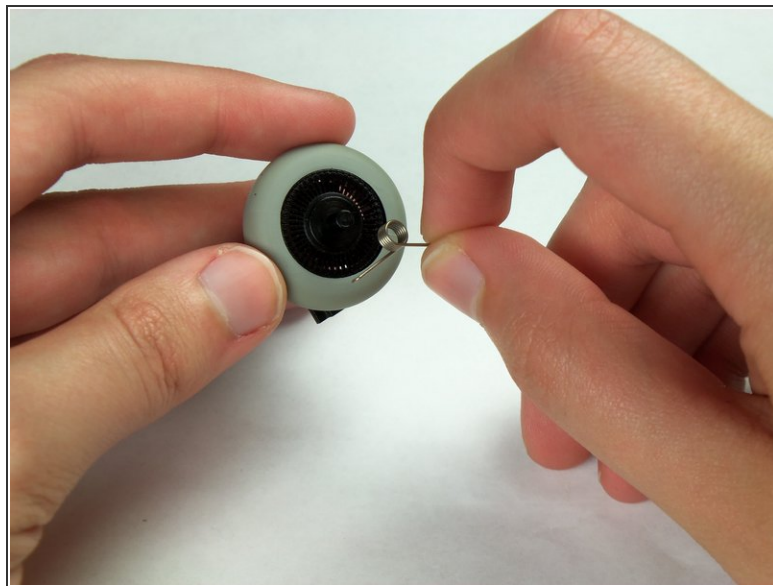
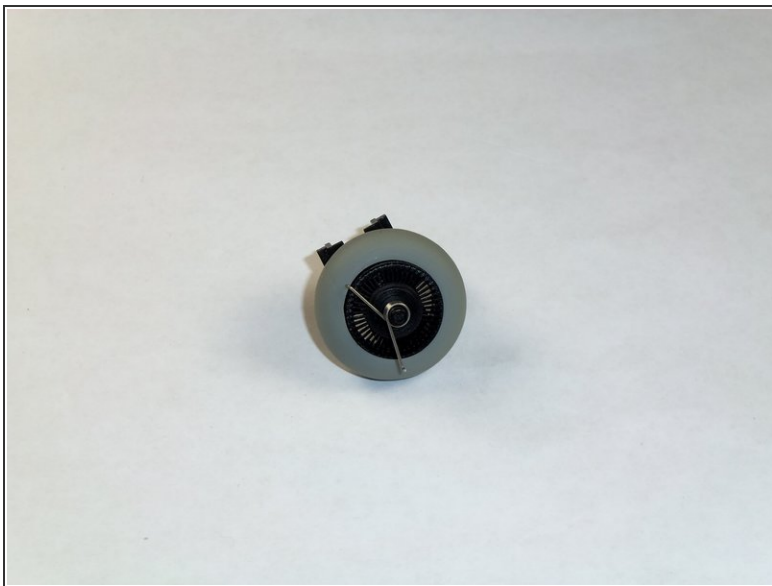
- Place the mouse so that the bottom is resting against a hard surface.
- Gently lift the top cover of the mouse and remove it.

### Step 3 — Removing the Logitech MBJ58 Mouse Scroll Wheel



- Locate the scroll wheel on the mouse.
- Grab the scroll wheel with your thumb and index finger.
- Gently lift up, to remove the scroll wheel from the mouse.

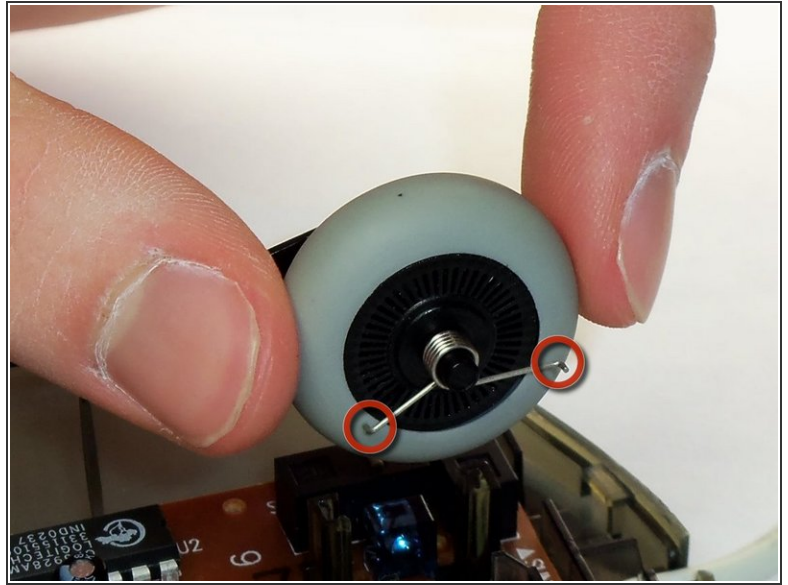
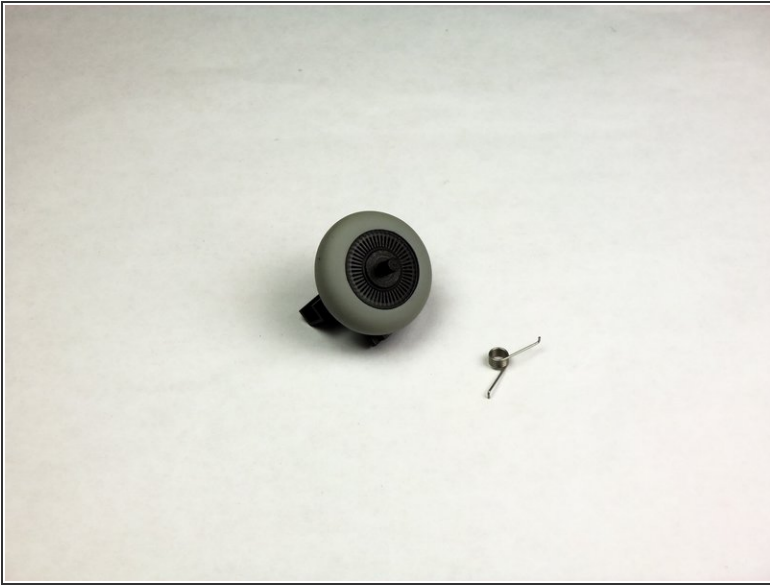
### Step 4 — Support Spring



- Locate the spring on the scroll wheel, and carefully remove the spring.

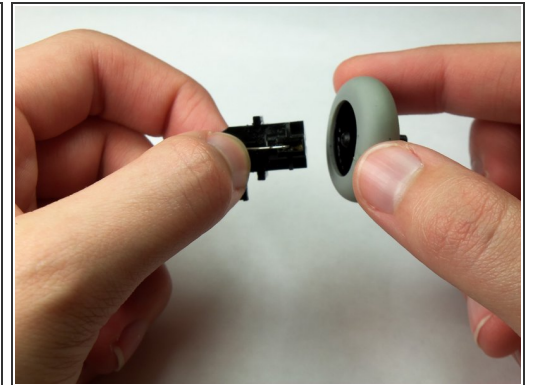
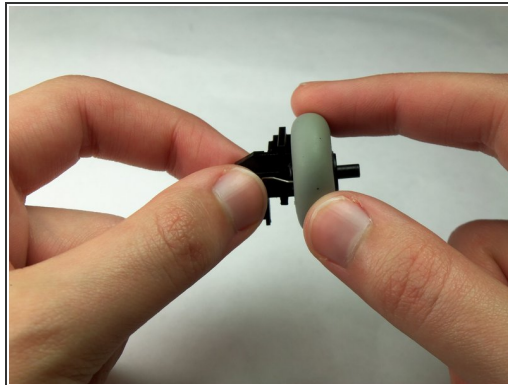



## Step 5 — Attaching the New Spring



- Place the replacement spring on the correct side of the wheel (shown in the images) with the prongs pointing down.

## Step 6 — Disassembling Logitech MBJ58 Mouse Scroll wheel from mount



- Use the images to locate where the resistance spring is.  
 This spring will easily fall off.
- Grab the scroll wheel and its mount and gently pull them apart.

To reassemble your device, follow these instructions in reverse order.