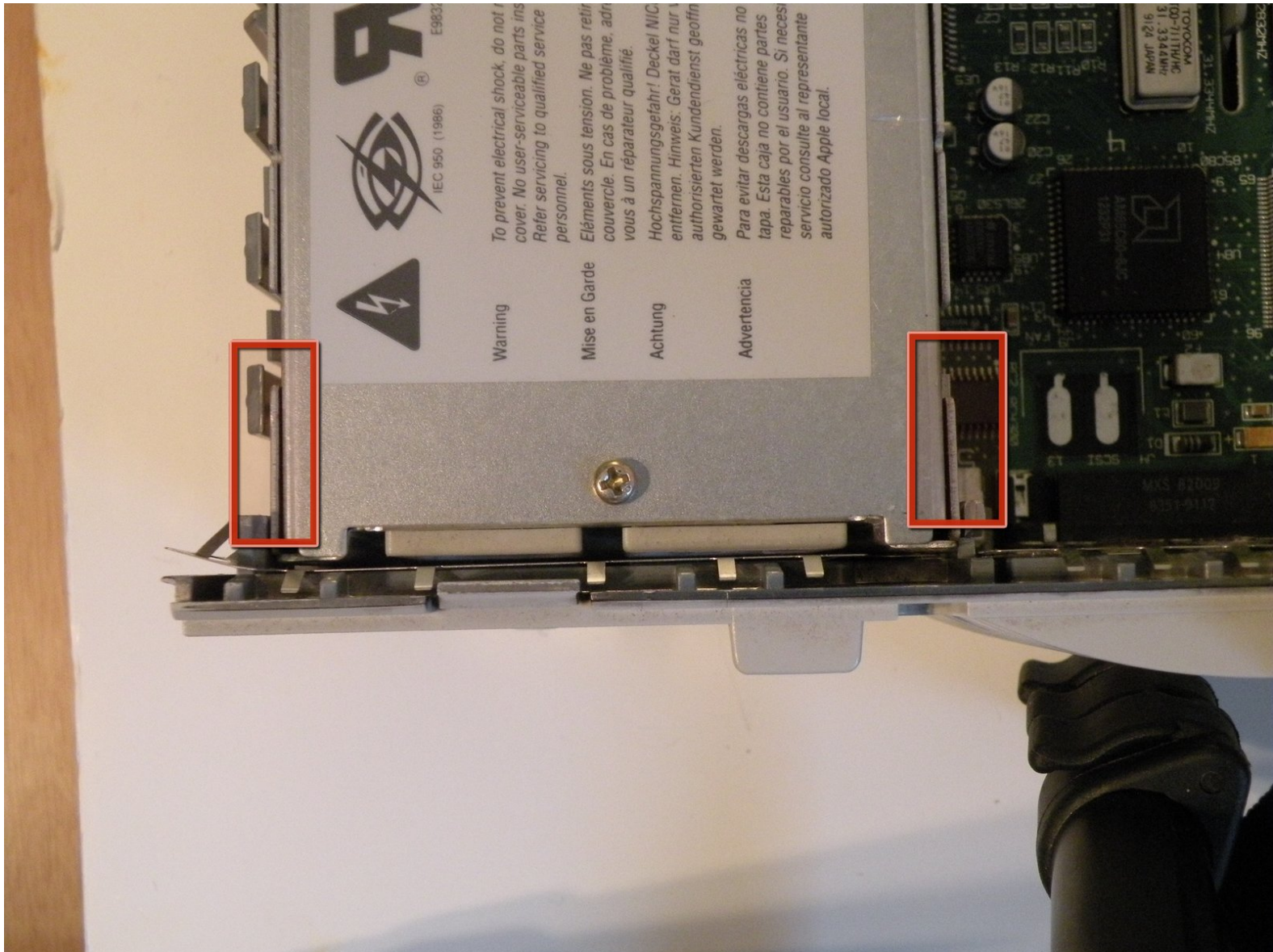




Disassembling Macintosh IIsx Power Supply

Written By: Chris Green



INTRODUCTION

The Macintosh IIsx Uses a 120/240V AC Power Supply. It provides power directly to the logic board. From there, it is distributed to the rest of the computer.



TOOLS:

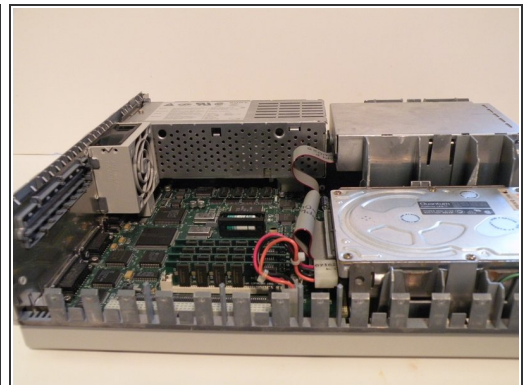
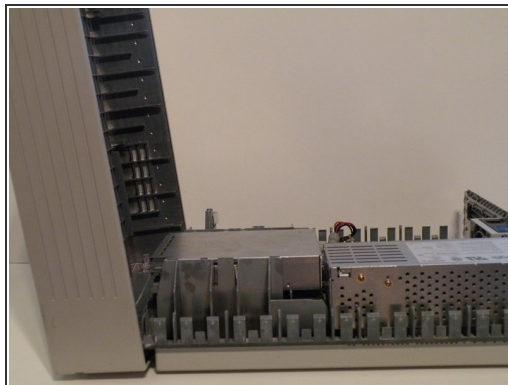
- [Phillips #0 Screwdriver](#) (1)
-

Step 1 — Top Case



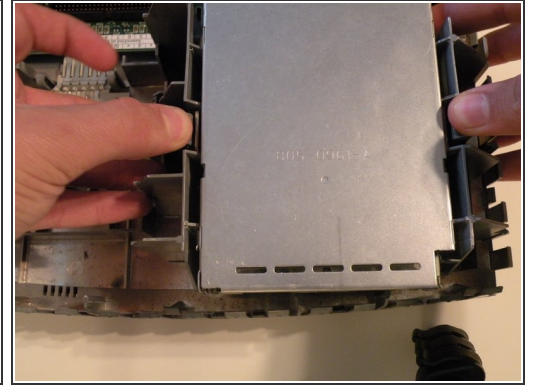
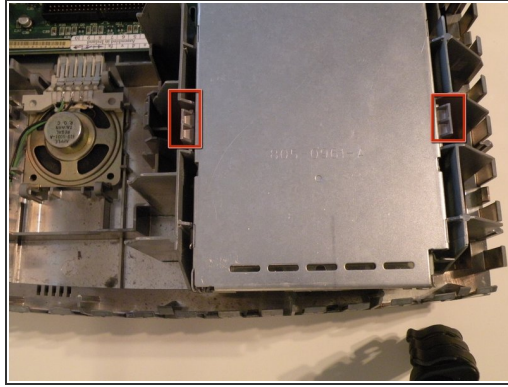
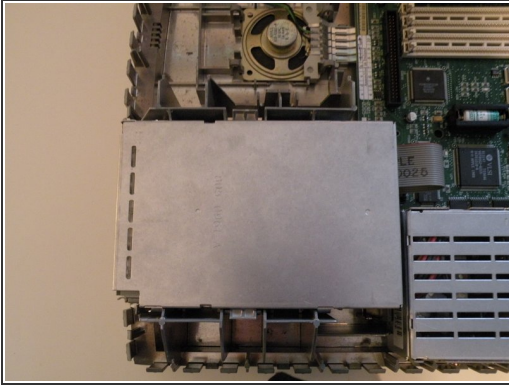
- Start by turning the computer around, and remove this #0 Phillips Screw.
- ⓘ There may or may not be a Phillips #0 screw here, depending on whether or not the computer has ever been serviced.

Step 2



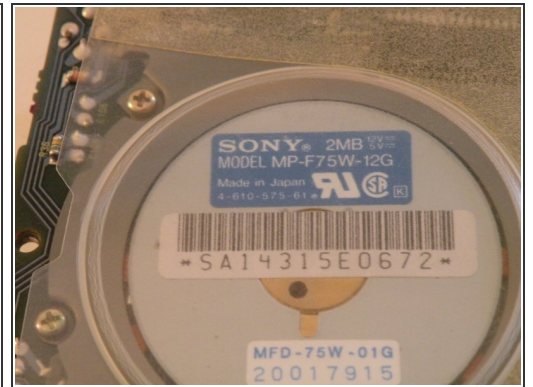
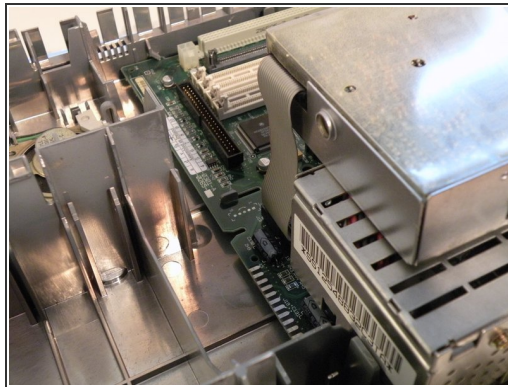
- Now lift these two clips, and slowly pivot the case up.
- You can now separate the top of the computer from the rest of the machine.

Step 3 — Floppy Drive



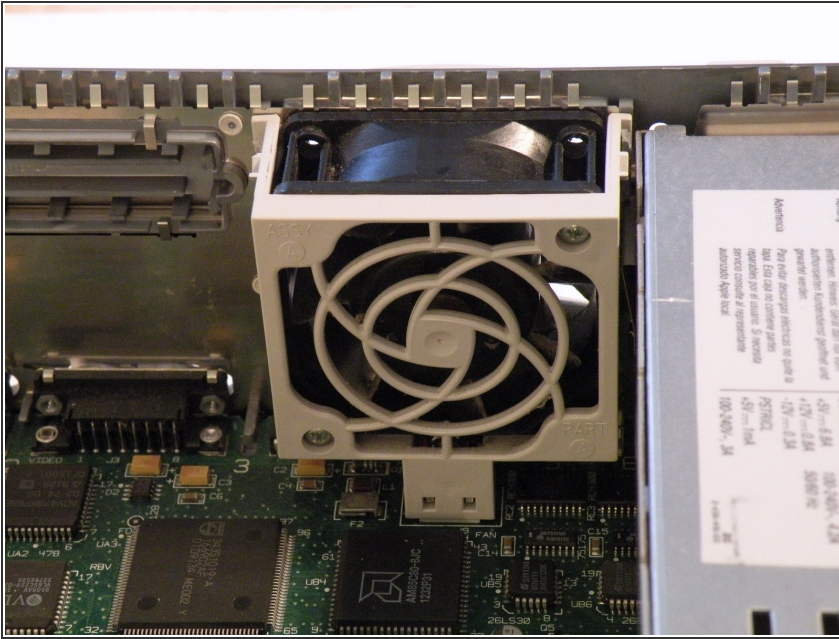
- The "SuperDrive" is mounted similarly to the hard drive, and positioned right next to it.
- Push these two tabs out, and lift the drive up.

Step 4



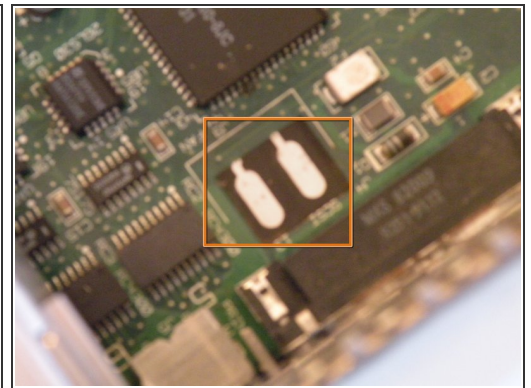
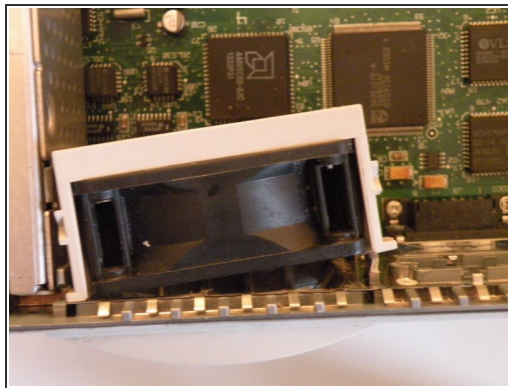
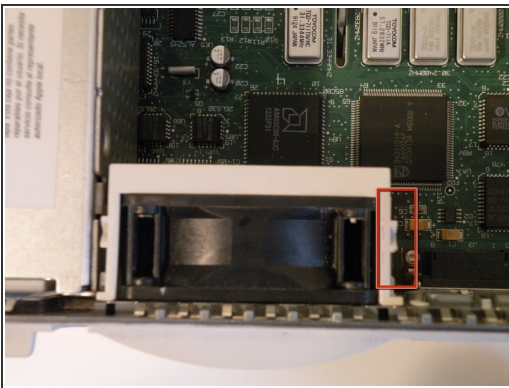
- Flip the drive so it is on top of the power supply, and remove the "Red-Ribbon" cable.
- ☑ 1.44MB floppy drives need a ribbon cable with a red stripe on one side. 400KB floppy drives use a ribbon cable with a yellow stripe on one side. 800KB floppy drives can use a red, or yellow striped cable.
- This drive was manufactured by Sony in 1990.

Step 5 — System Fan



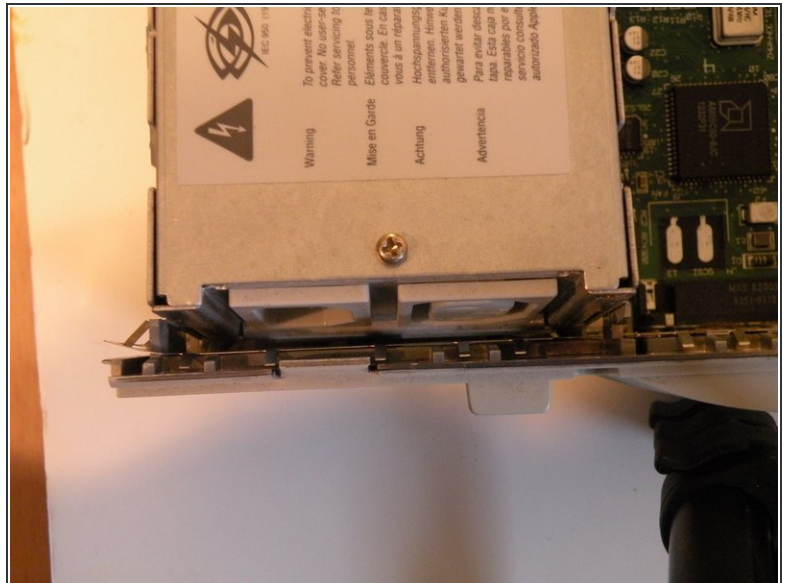
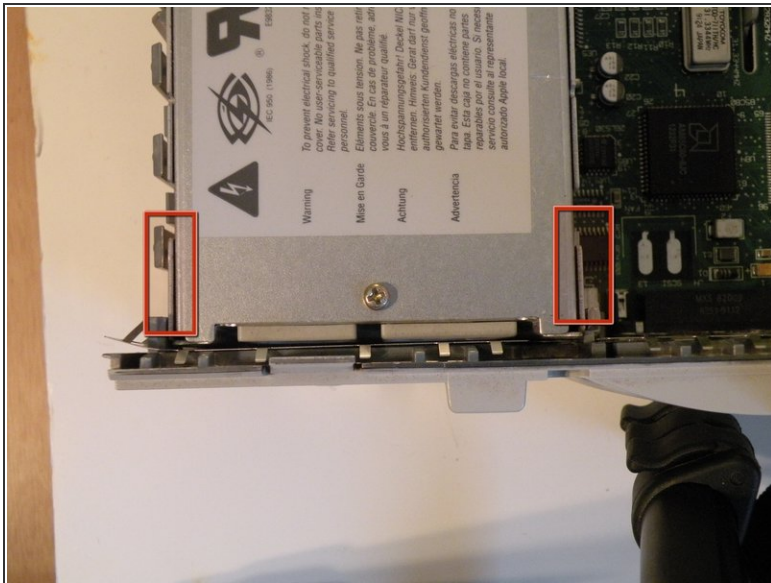
- The fan receives power from two contacts on the logic board and has no connector.

Step 6



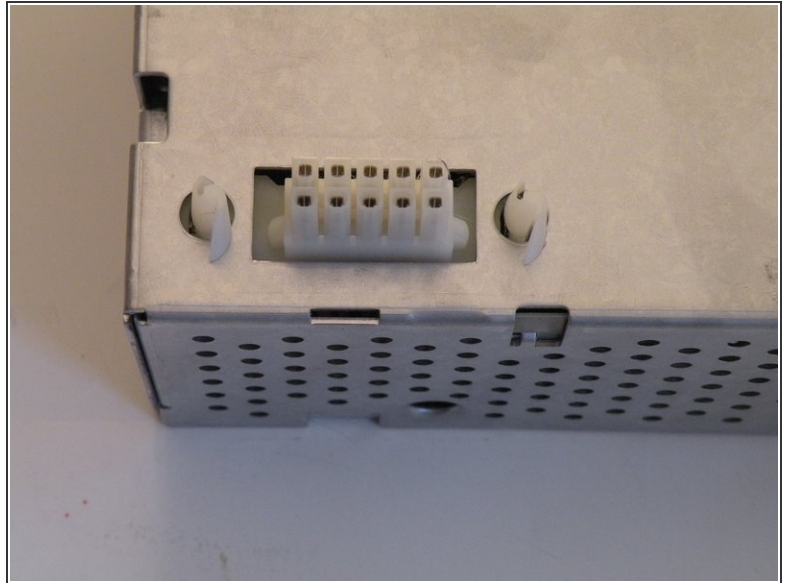
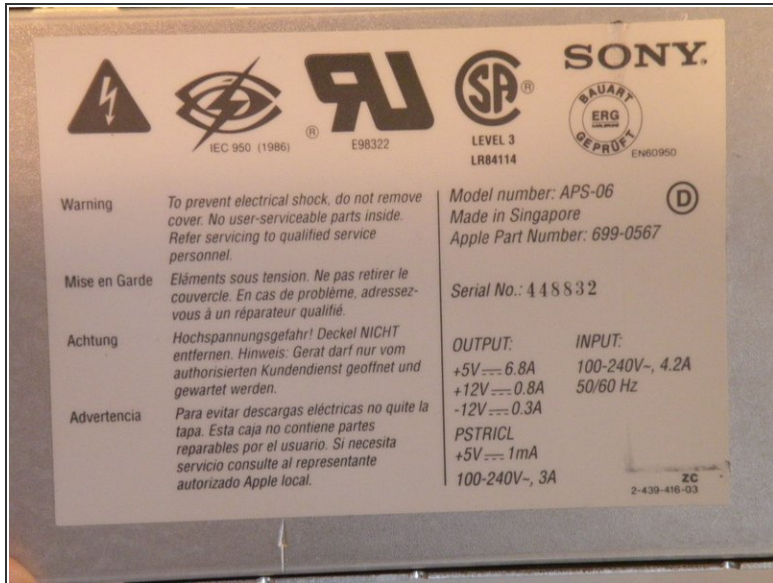
- In all of the years that I have worked on this machine, I have found no good way to remove the fan.
- The best way to start, is to push in here on the side of the fan.
- Being careful not to exert too much force, try to push in, and wiggle the fan outward as such. (2nd Photo)
- You can now lift the fan all the way out, and remove it.
- The Fan Power Contacts on the Logic Board:

Step 7 — Power Supply



- To remove the power supply, squeeze these two tabs and lift the front up.
- On the back of the power supply, there is a tab that also must be pressed to remove the power supply fully. You can then lift it out all the way. A firm tug may be necessary to separate the power connector.

Step 8



- Information on the power supply:
- It was made by Sony in 1990, and uses a 10-Pin power connector.

To reassemble your device, follow these instructions in reverse order.