



Disassembling Mercedes W123 Glove Box Liner

There are several jobs that you'll need to pull the glove box liner to get access to the part that needs replacing or repair.

Written By: Nicolas Siemsen



INTRODUCTION

There are a lot of items behind the dash board of a W123 that may eventually need service, anything from various relays, to one of several vacuum actuators for the climate control vents and flaps.

One way to get easier access to several of these parts is to remove the glove box liner. Learn how here.



TOOLS:

- [Phillips #1 Screwdriver](#) (1)
 - [Flathead Screwdriver](#) (1)
-

Step 1 — Glove Box Liner



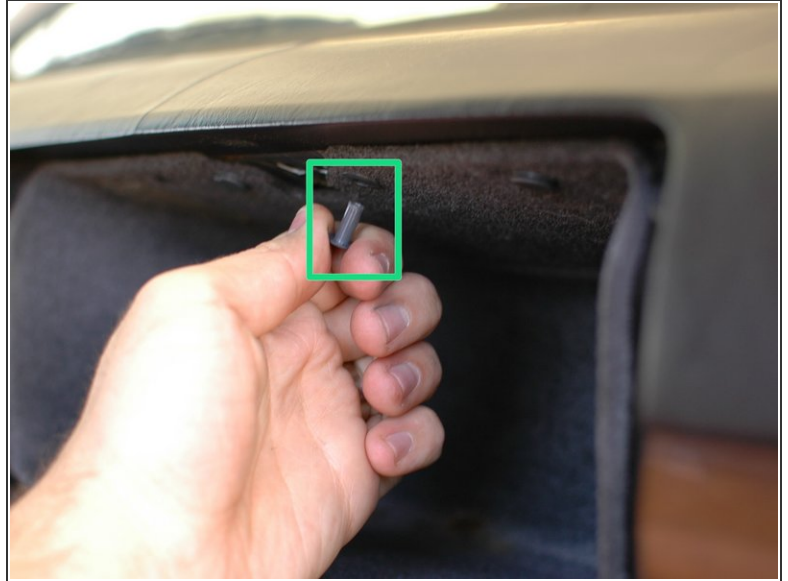
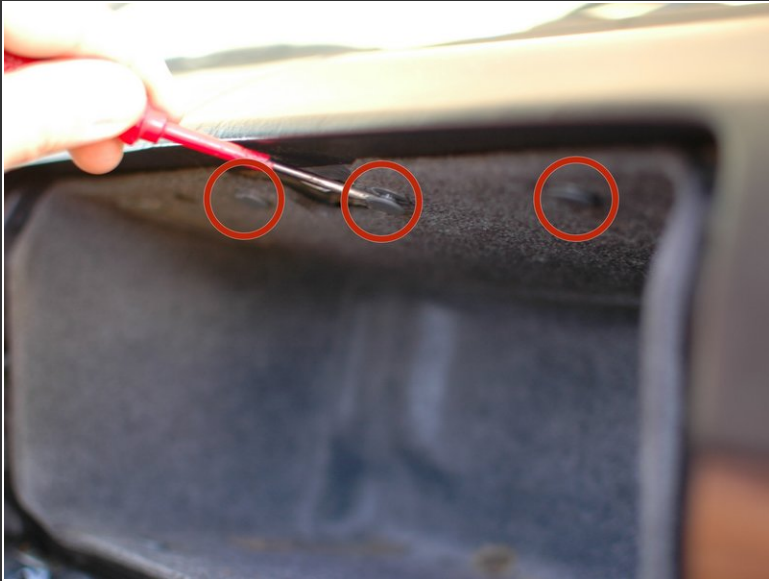
- Start by opening the glove box.

Step 2



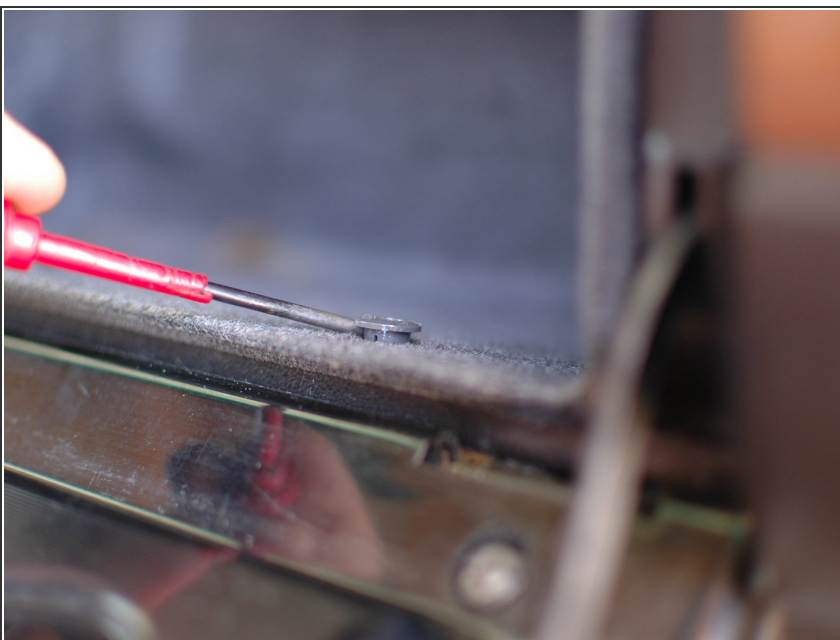
- Remove the two phillips screws in the glove box door catch, then remove it.

Step 3



- Gently pry apart the expansion plug in the glove box clips. There will be a row of them on top, and on the bottom.
- Once you've pried it out part of the way you can pull it the rest of the way out by hand, or gently with needle nose pliers.

Step 4



- You can then pry the clips out of the liner. Remove them all.

Step 5



- Gently pry down the cover for the glove box lamp.

Step 6



- Now unplug the two connections from the lamp and remove the lamp housing.
- Be sure to make note of the orientation of the two wires for re-installation.

Step 7



- Now the glove box liner will pull out by hand.

To reassemble your device, follow these instructions in reverse order.